

2-6 ELDRIDGE STREET

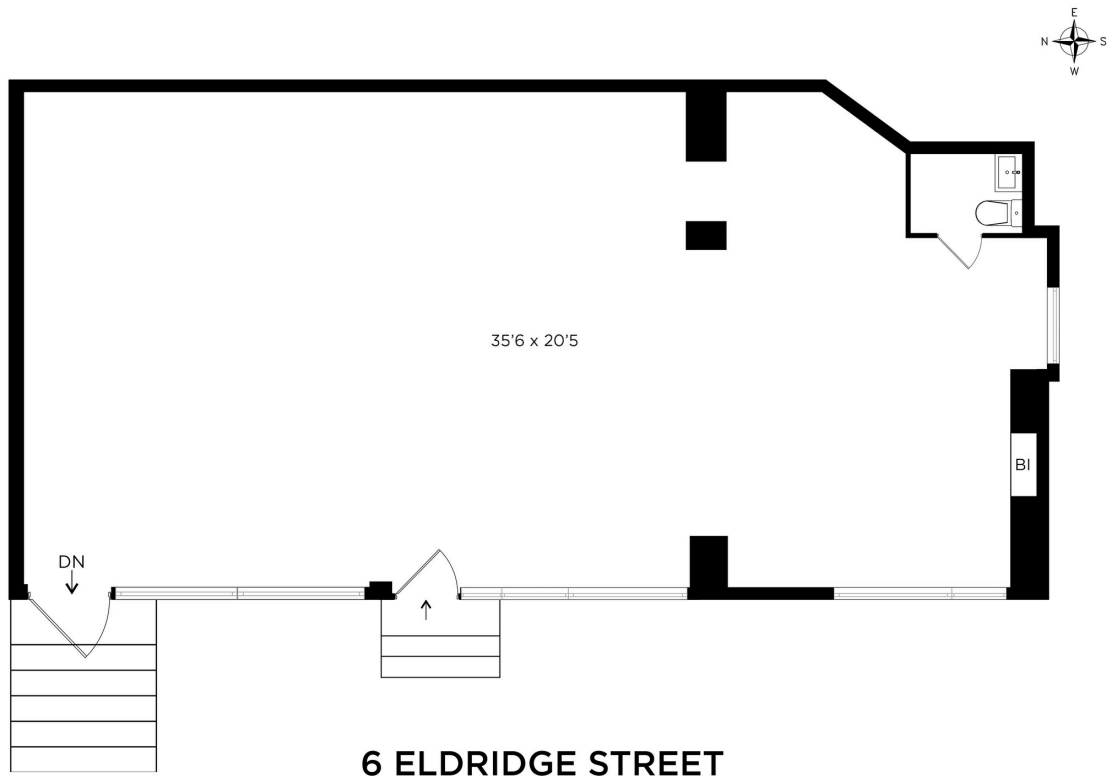


**PRIME RETAIL
OPPORTUNITY**



FOR MORE INFORMATION

Danielle.lundberg@elliman.com
(917) 279-6600
Steven.kramer@elliman.com
(516) 445-5509



Located at the intersection of Eldridge and Division Streets, this approximately 750 SF unit offers unmatched exposure and branding potential, with the added benefit of a spacious basement.

KEY FEATURES

- Rent 10k a month
- Corner location with exceptional foot and vehicle traffic
- Venting already installed
- Surrounded by a vibrant mix of residential, commercial, and cultural destinations.

Available Now



www.DouglasElliman.com