

# For Lease // Professional Work Space

297 Daniel Webster Hwy, Merrimack ,NH



**1,200 SF**


## About:

Introducing a professional working space located at a lighted intersection off exit 11, Continental Boulevard, and Daniel Webster Hwy in Merrimack. This 1,200 square foot unit offers excellent visibility and is designed to meet your business needs. The unit features 2 offices, a reception area, a convenient 1/2 bath, and a welcoming waiting area.




## Contact Details:

 **Chris Pascucci**

 603-494-8960

 [Chris.Pascucci@SVN.com](mailto:Chris.Pascucci@SVN.com)

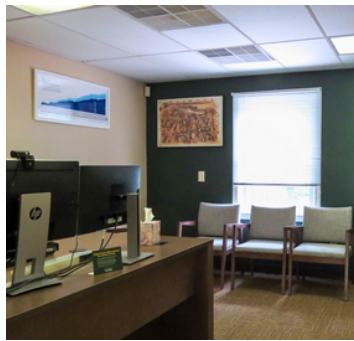
**Sean Coughlin** 

603-493-8581 

[Sean.Coughlin@SVN.com](mailto:Sean.Coughlin@SVN.com) 

# For Lease // Professional Work Space

297 Daniel Webster Hwy, Merrimack ,NH



## Property Details:



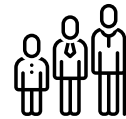
### Population

1 mile: 2,623  
3 miles: 20,522  
5 miles: 65,385



### Median HH Income

1 mile: \$157,854  
3 miles: \$157,121  
5 miles: \$155,148



### Median Age

1 mile: 43 years  
3 miles: 43 years  
5 miles: 43 years

**LEASE PRICE**

// \$2,050 Monthly

**LEASE TYPE**

// Modified Gross

**SPACE AVAILABLE**

// 1,200 SF

**VISIBILITY**

// Excellent

**ZONING**

// Commercial