

RIM VILLAGE VISTAS SUBDIVISION

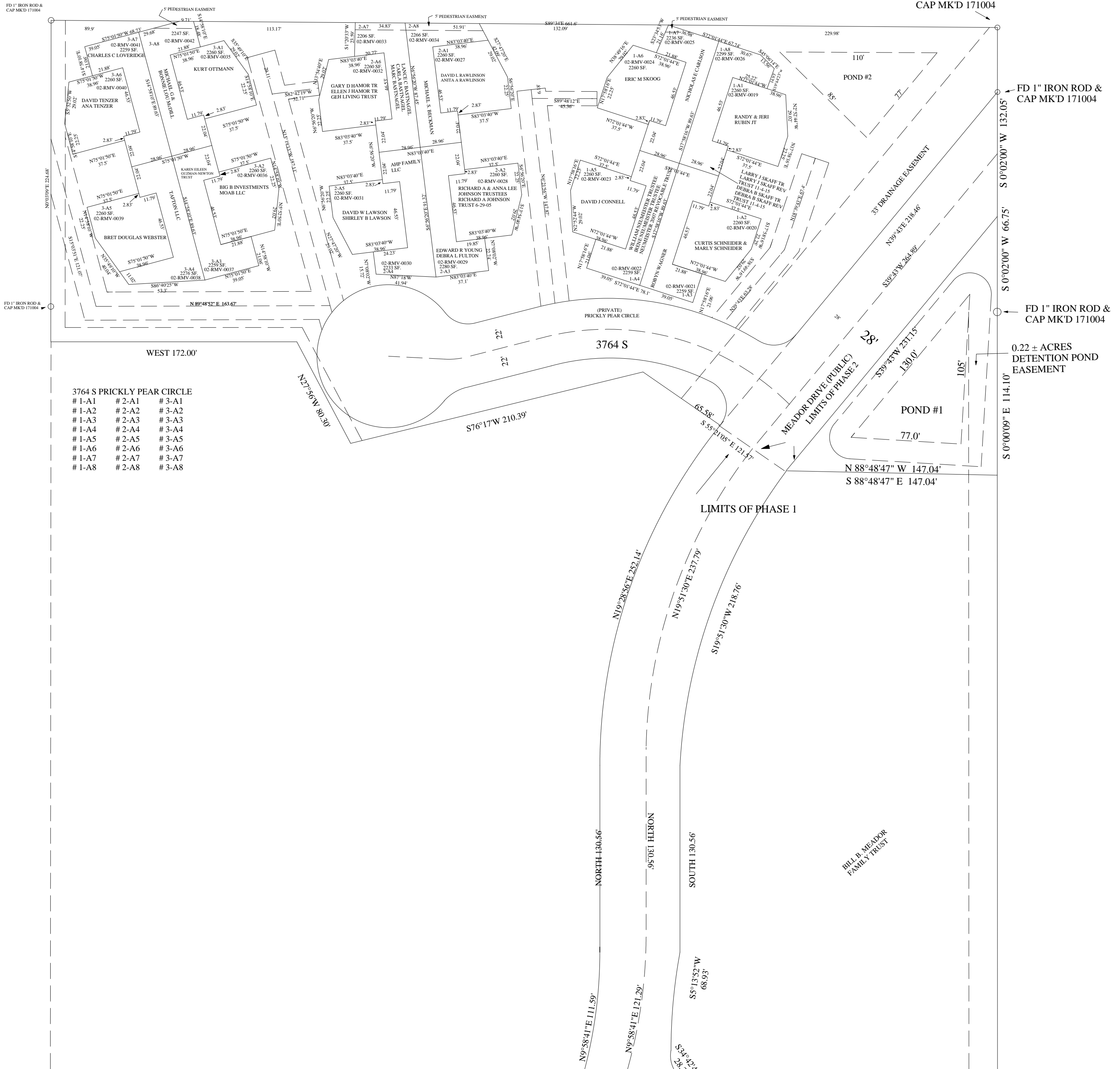
PHASE 1 AND PHASE 2

A PLANNED UNIT DEVELOPMENT WITHIN THE NE¼ OF SECTION 27, T26S R22E SLM

GRAND COUNTY, UTAH

RIM VILLAGE TOWN HOMES
PHASE V

FD 1" IRON ROD &
CAP MK'D 171004



3764 S PRICKLY PEAR CIRCLE

# 1-A1	# 2-A1	# 3-A1
# 1-A2	# 2-A2	# 3-A2
# 1-A3	# 2-A3	# 3-A3
# 1-A4	# 2-A4	# 3-A4
# 1-A5	# 2-A5	# 3-A5
# 1-A6	# 2-A6	# 3-A6
# 1-A7	# 2-A7	# 3-A7
# 1-A8	# 2-A8	# 3-A8

FD 1" IRON ROD &
CAP MK'D 171004

FD 1" IRON ROD &
CAP MK'D 171004

0.22 ± ACRES
DETENTION POND
EASEMENT

S 0°00'09" E 114.10'

S 0°02'00" W 132.05'

S 0°02'00" W 66.75'

BILL B MEADOR
FAMILY TRUST

LIMITS OF PHASE 1

MEADOR DRIVE (PUBLIC)
LIMITS OF PHASE 2

NORTH 130.56'

SOUTH 130.56'

N9°58'41" E 111.59'

N9°58'41" E 121.29'

S5°13'52" W 68.93'

S34°42'21" W 28.28'

N19°28'56" E 252.14'

N19°51'30" E 237.79'

S19°51'30" W 218.76'

S76°17' W 210.39'

S 55°21'05" E 121.57'

N 88°48'47" W 147.04'
S 88°48'47" E 147.04'

WEST 172.00'

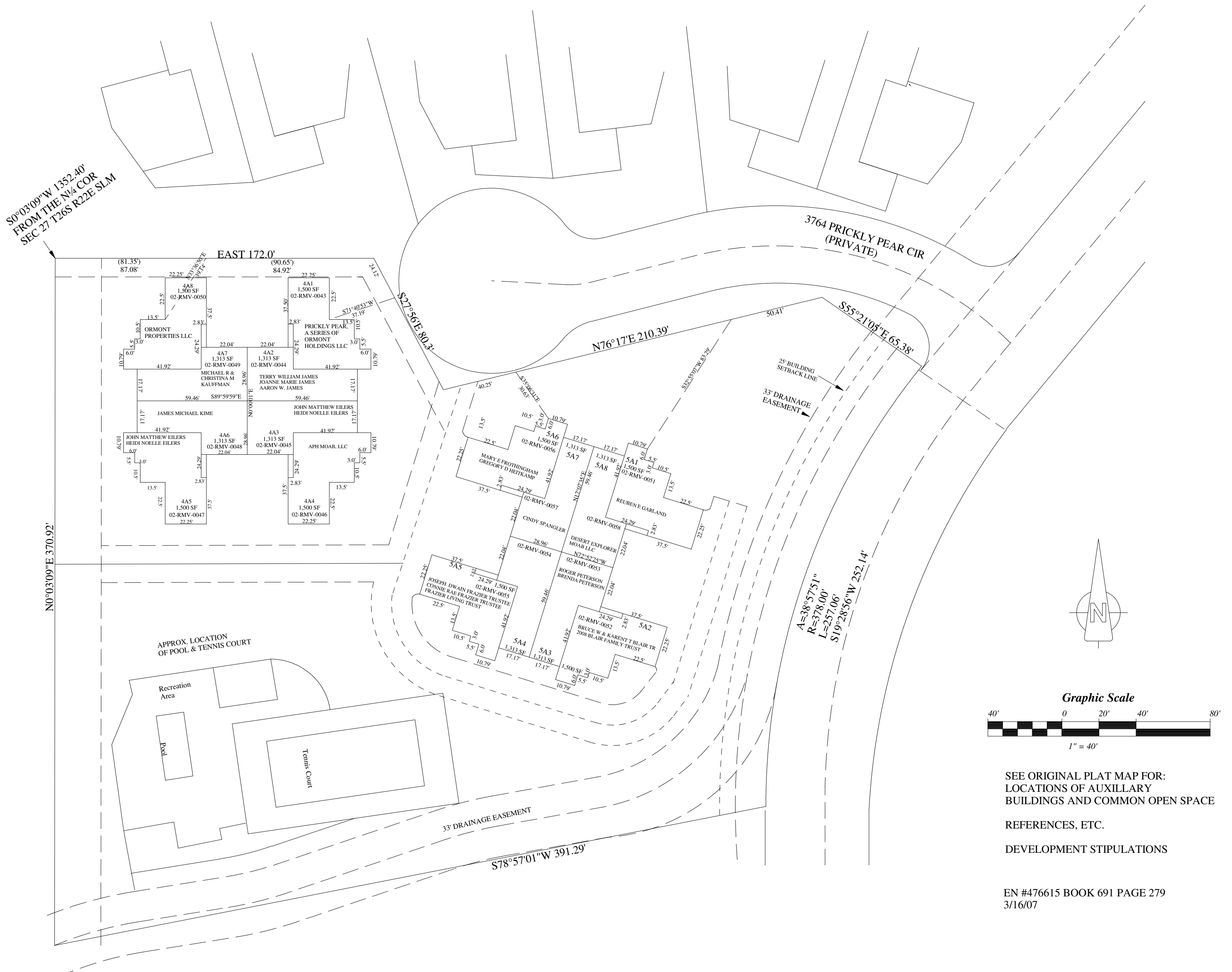
FD 1" IRON ROD &
CAP MK'D 171004

FD 1" IRON ROD &
CAP MK'D 171004

RIM VILLAGE VISTAS SUBDIVISION PHASE 3

A PLANNED UNIT DEVELOPMENT WITHIN THE N½ OF SECTION 27 T26S R22E SLM
GRAND, COUNTY, UTAH

THIS PLAT IS FOR NAME CHANGE RECORDS ONLY
SEE OFFICIAL PLAT FOR ALL OTHER PURPOSES

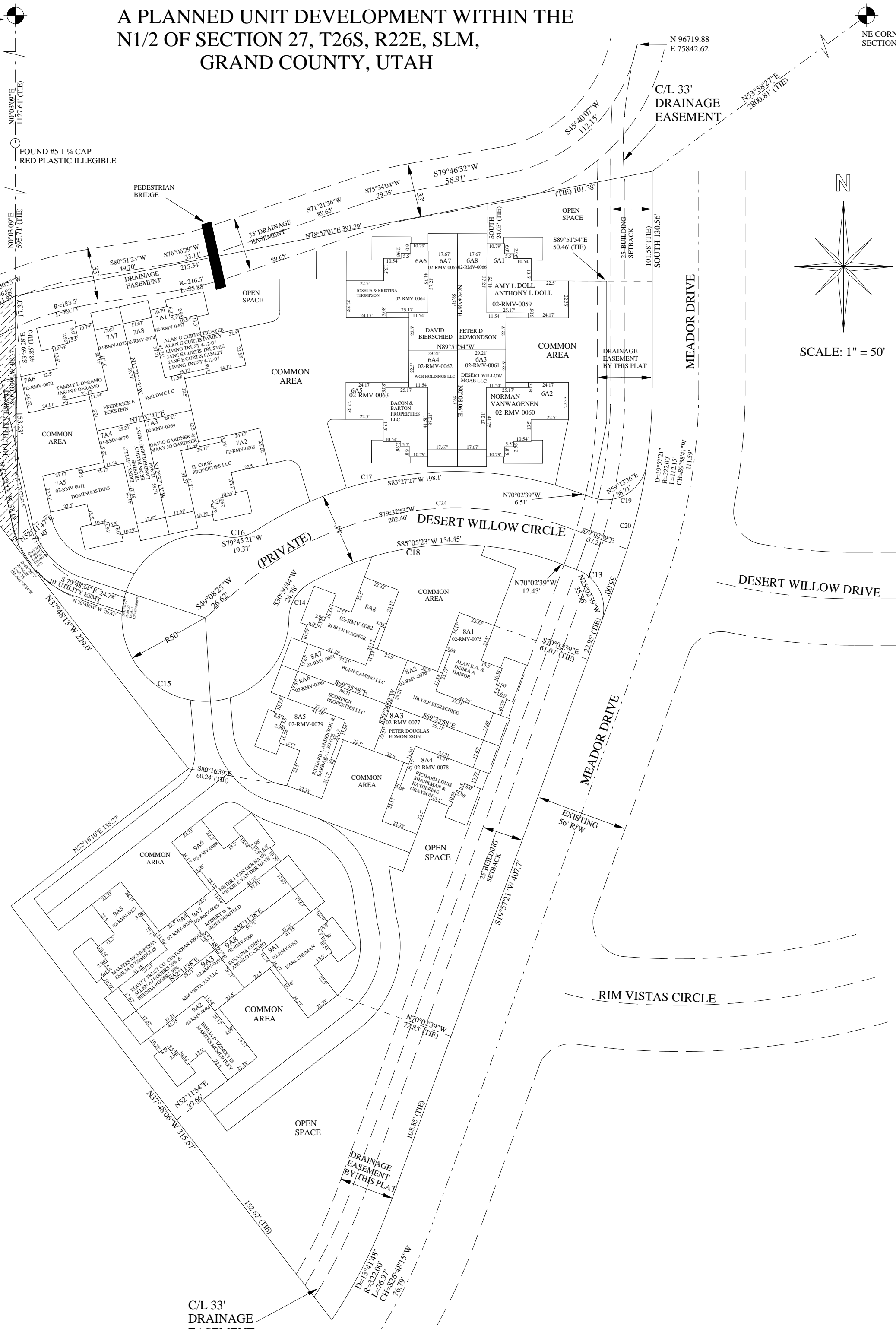


RIM VILLAGE VISTAS SUBDIVISION PHASE 4

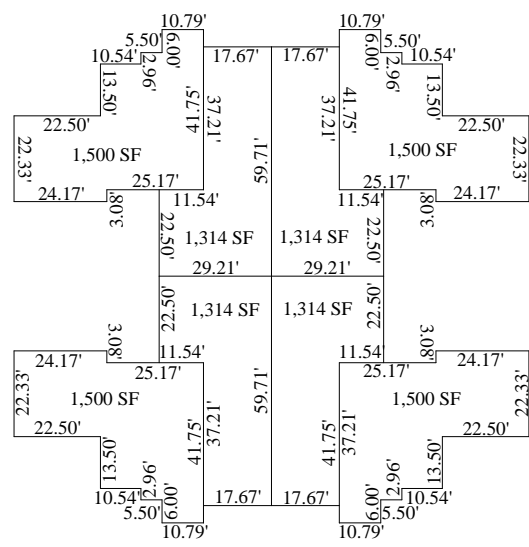
A PLANNED UNIT DEVELOPMENT WITHIN THE
N1/2 OF SECTION 27, T26S, R22E, SLM,
GRAND COUNTY, UTAH

N 1/4 CORNER SECTION 27
T26S, R22E, SLM
SPIKE IN FENCE POST (R-2)

NE CORNER
SECTION 27, T26S, R22E



CROSSHATCHED AREA POTENTIALLY AFFECTED
BY BLANKET EASEMENT TO:
A) UTAH POWER & LIGHT CO. 12-22-1971,
BK. 193, P. 541.
B) OIL, GAS & HYDROCARBON LEASE,
6-2-1999, BK. 535, P. 192.
C) MINERAL LEASE ASSIGNMENT, 7-15-1999,
BK. 536, P. 587.



FIRST FLOOR FOOTPRINT
MULTI-FAMILY

CURVE TABLE

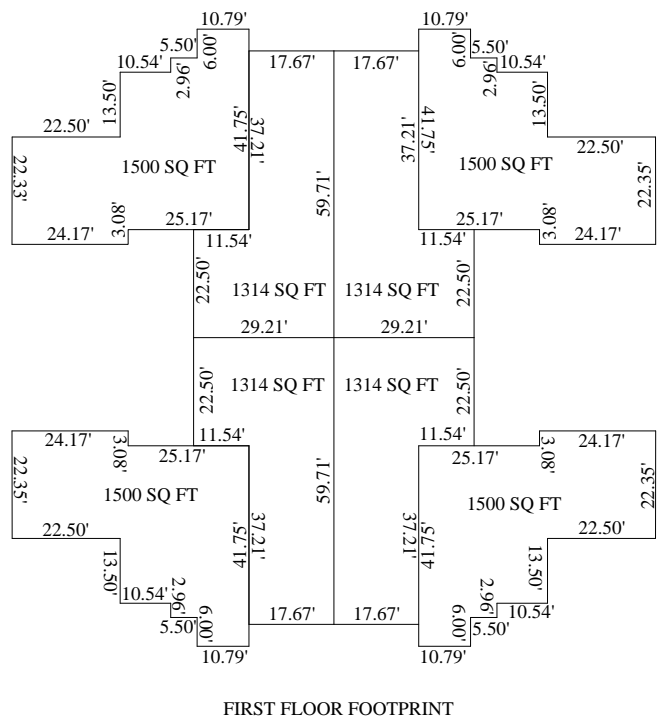
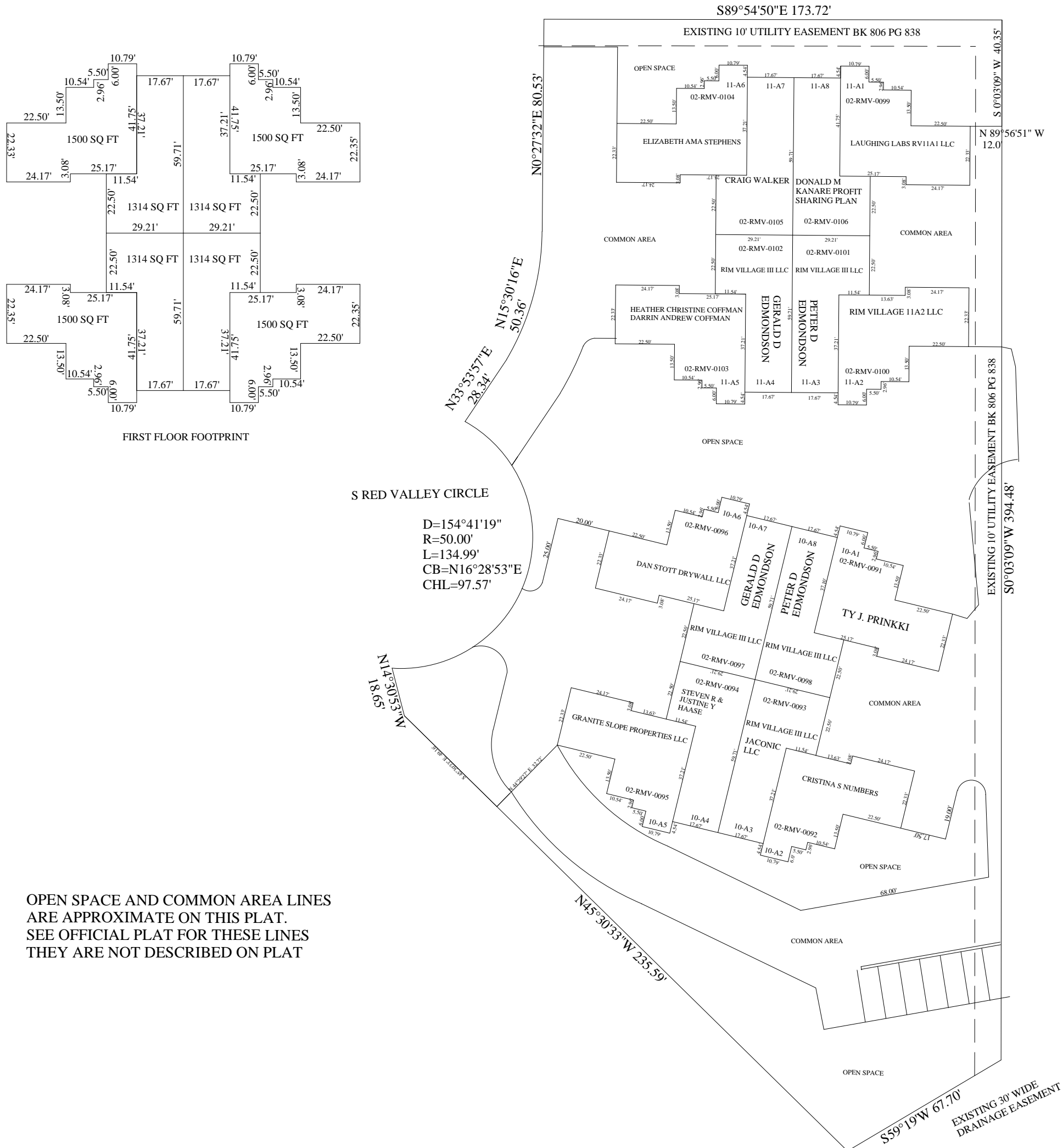
C13 = 90°00'00" R=25.00' L=39.27' CH=S25°02'39"E 35.36'	C18 = 49°43'56" R=178.00' L=154.50' CH=S85°05'23"W 149.70'
C14 = 59°25'22" R=25.00' L=25.93' CH=N30°30'44"E 24.78'	C19 = 101°27'29" R=25.00' L=44.27' CH=N59°13'36"E 38.71'
C15 = 281°45'07" R=50.00' L=245.87' CH=S38°19'24"E 63.10'	C20 = 11°27'29" R=322.00' L=64.39' CH=N14°13'36"E 64.29'
C16 = 45°35'38" R=25.00' L=19.89' CH=S79°45'21"W 19.37'	C24 = 60°48'56" R=200.00' L=212.29' CH=N79°32'53"E 202.46'
C17 = 52°59'49" R=222.00' L=205.34' CH=S83°27'27"W 198.10'	

RIM VILLAGE VISTAS SUBDIVISION PHASE 5

A PLANNED UNIT DEVELOPMENT WITHIN THE N1/2 OF SECTION 27, T26S, R22E, SLM,
GRAND COUNTY, UTAH

SCALE: 1"=40'

POB
1328.84 FT
S0°03'09"W
FROM N¼ COR

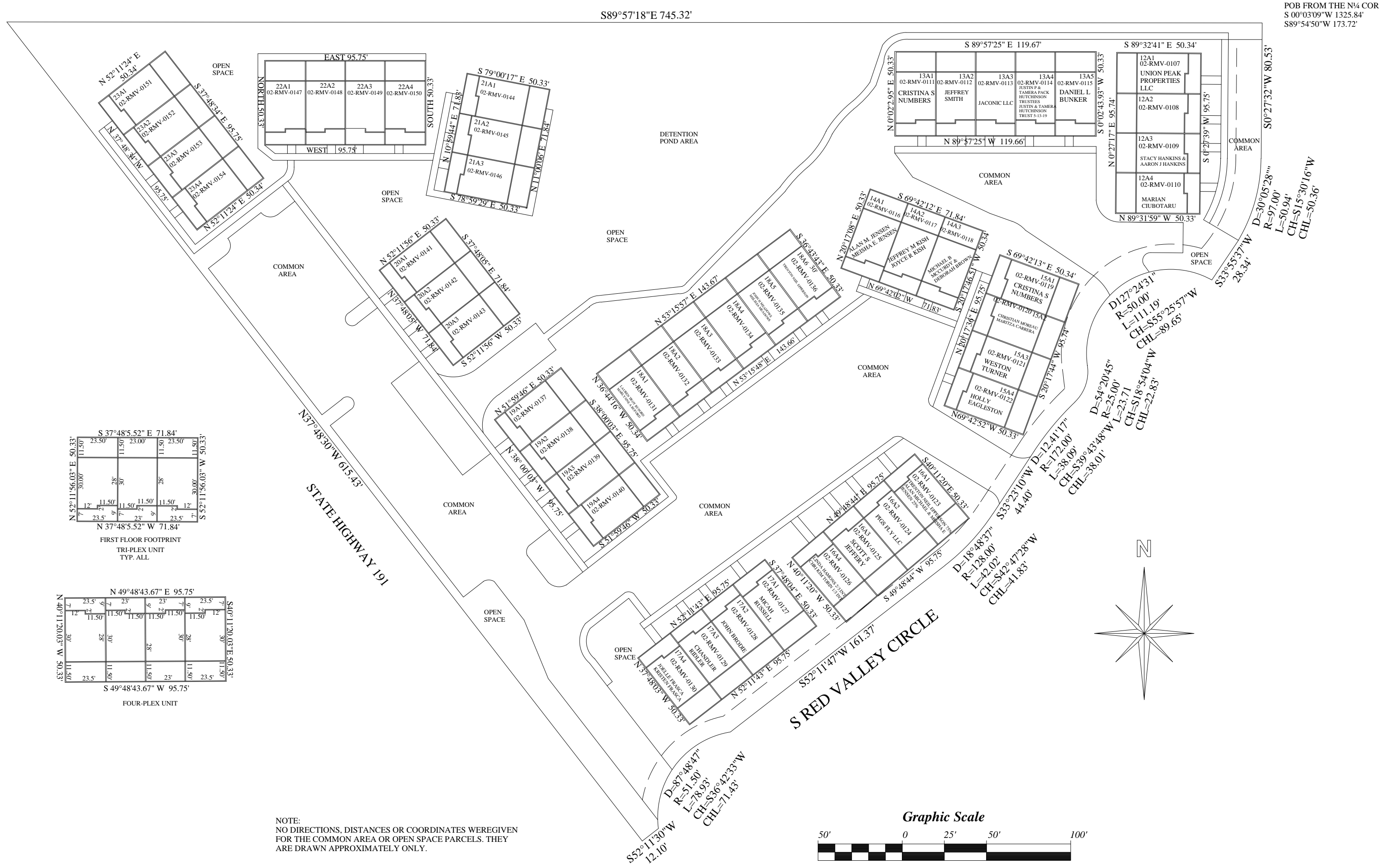


S RED VALLEY CIRCLE
D=154°41'19"
R=50.00'
L=134.99'
CB=N16°28'53"E
CHL=97.57'

OPEN SPACE AND COMMON AREA LINES
ARE APPROXIMATE ON THIS PLAT.
SEE OFFICIAL PLAT FOR THESE LINES
THEY ARE NOT DESCRIBED ON PLAT

RIM VILLAGE VISTAS SUBDIVISION PHASE 6

A PLANNED UNIT DEVELOPMENT WITHIN THE N1/2 OF SECTION 27, T26S, R22E, SLM,
GRAND COUNTY, UTAH



NOTE:
NO DIRECTIONS, DISTANCES OR COORDINATES WERE GIVEN
FOR THE COMMON AREA OR OPEN SPACE PARCELS. THEY
ARE DRAWN APPROXIMATELY ONLY.