

OFFICE SPACE FOR LEASE

398 KINGS HIGHWAY, BROOKLYN NY, 11223



FOR MORE INFORMATION ON THIS PROPERTY PLEASE CALL OUR OFFICE: 718.517.8700

PROPERTY DETAILS

SIZE: 200 - 400 SF AVAILABLE

LOWER LEVEL PROFESSIONAL OFFICE SPACE

NEWLY CONSTRUCTED ELEVATOR BUILDING

COMMON AREA WITH KITCHEN & BATHROOMS

ALL UTILITIES INCLUDED

STEPS FROM PUBLIC TRANSPORTATION

RENTAL RATE : \$1,300/MONTH PER UNIT



NEIGHBORHOOD
GRAVESEND



BLOCK & LOT
6678-7504



ZONING
C2-3

FOR MORE INFORMATION ON THIS PROPERTY PLEASE CALL OUR OFFICE: **718.517.8700**

PROPERTY DETAILS



398 KINGS HIGHWAY, BROOKLYN NY 11223



NEIGHBORHOOD
GRAVESEND



BLOCK & LOT
6678-7504



ZONING
C2-3

TRANSPORTATION

B3 B82

B F D N Q

Walk Score 93

Transit Score 98

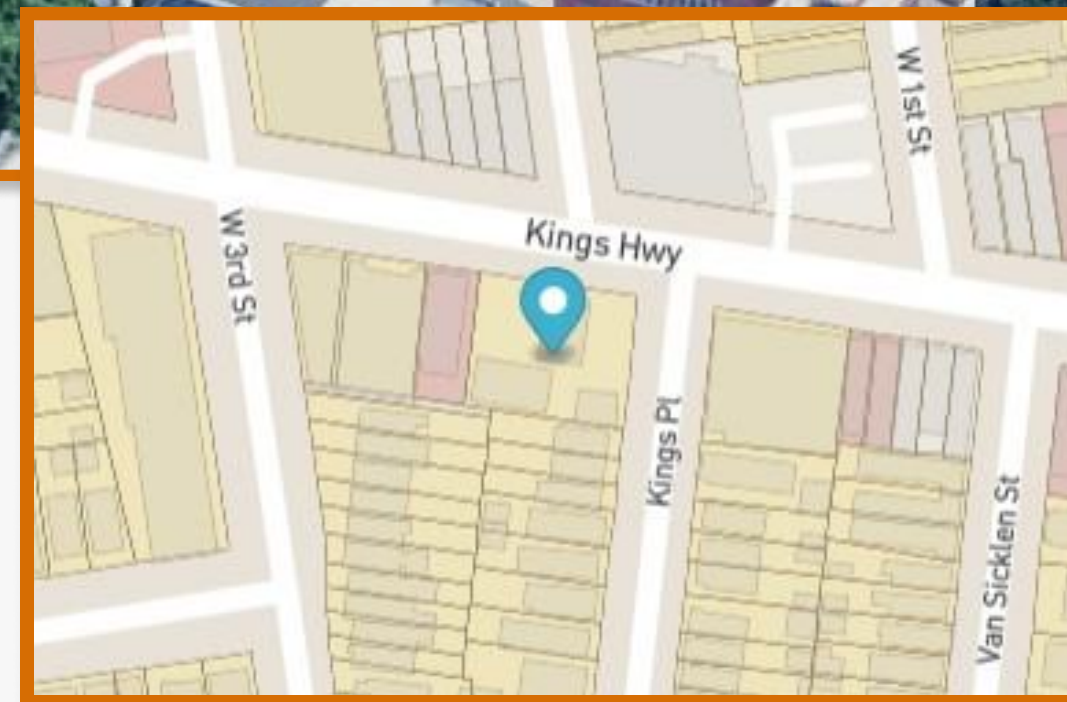
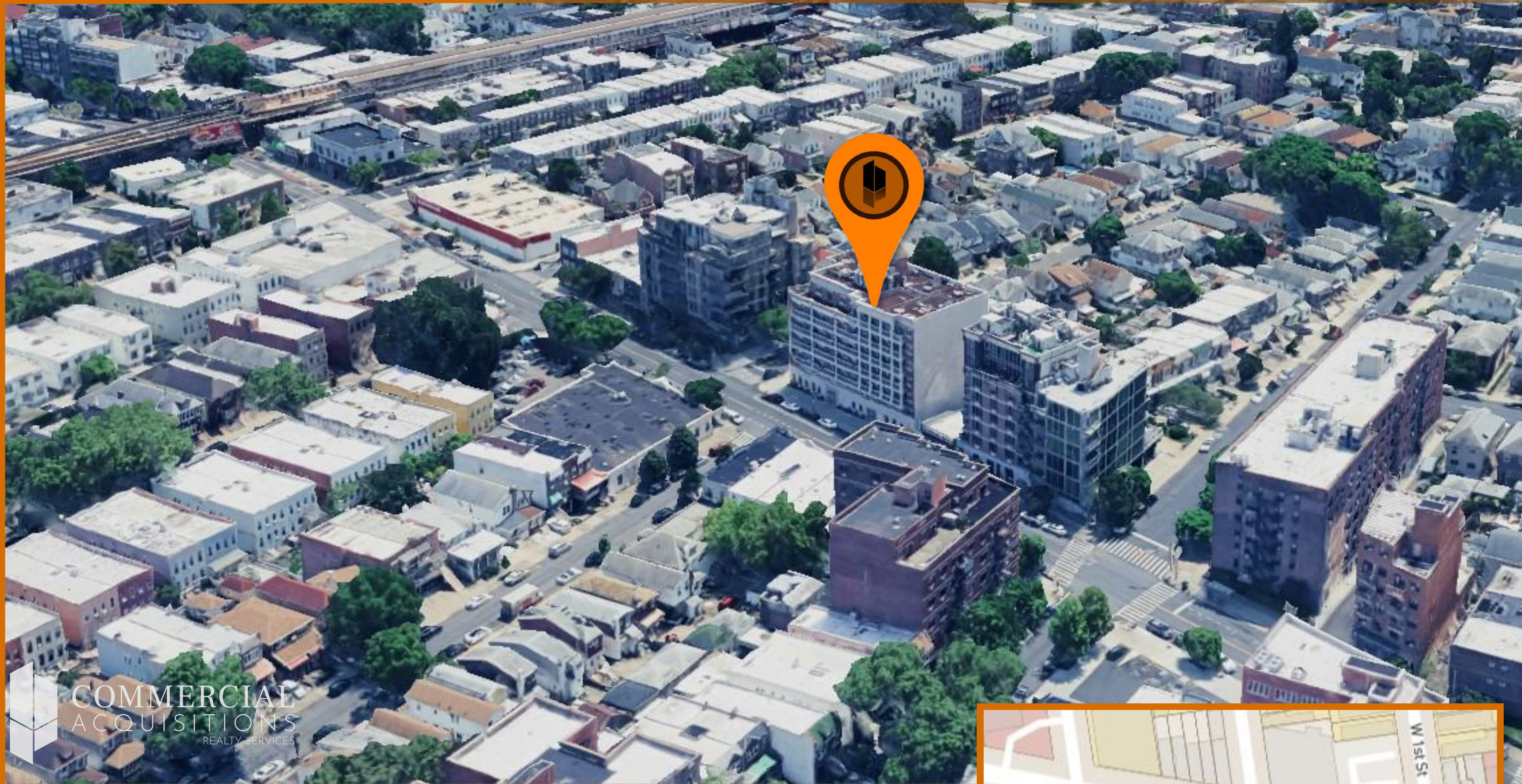
FOR MORE INFORMATION ON THIS PROPERTY PLEASE CALL OUR OFFICE: 718.517.8700

PROPERTY PHOTOS



FOR MORE INFORMATION ON THIS PROPERTY PLEASE CALL OUR OFFICE: **718.517.8700**

CONTACT US



CONTACT EXCLUSIVE BROKER



ARSEN ATBASHYAN
CELL: 917.939.3760
ARSEN@COMMERCIALACQ.COM

FOR MORE INFORMATION ON THIS PROPERTY PLEASE CALL OUR OFFICE: 718.517.8700

© 2500 CONEY ISLAND AVENUE, 2ND FLOOR, BROOKLYN, NY 11223 ☎ 917.939.3760 ✉ ARSEN@COMMERCIALACQ.COM 🌐 COMMERCIALACQ.COM

COMMERCIAL ACQUISITIONS INC. HAS MADE EVERY EFFORT TO OBTAIN THE INFORMATION REGARDING THESE LISTINGS FROM SOURCES DEEMED RELIABLE. HOWEVER, WE CANNOT WARRANT THE COMPLETE ACCURACY THEREOF SUBJECT TO ERRORS, OMISSIONS, CHANGE OF PRICE, RENTAL OR OTHER CONDITIONS, PRIOR SALE, LEASE OR FINANCING, OR WITHDRAWAL WITHOUT NOTICE. WE RECOMMEND TO THE BUYER THAT ANY INFORMATION, WHICH IS OF SPECIAL INTEREST, SHOULD BE OBTAINED THROUGH INDEPENDENT VERIFICATION. ALL MEASUREMENTS MAY BE APPROXIMATE.