

# For sublease

2180 Premier Row, Orlando, FL 32809  
12,372 SF



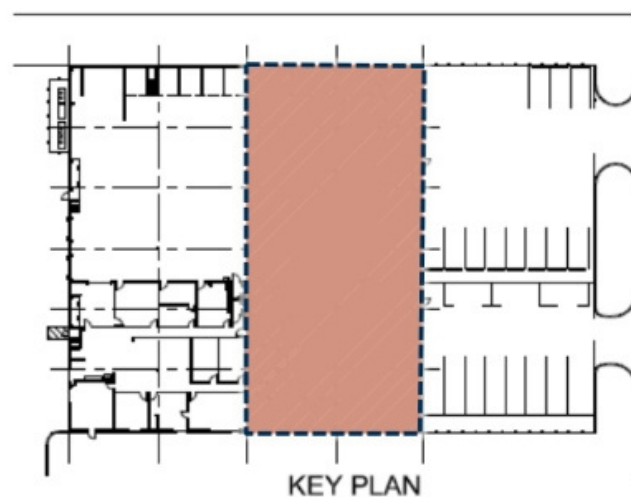
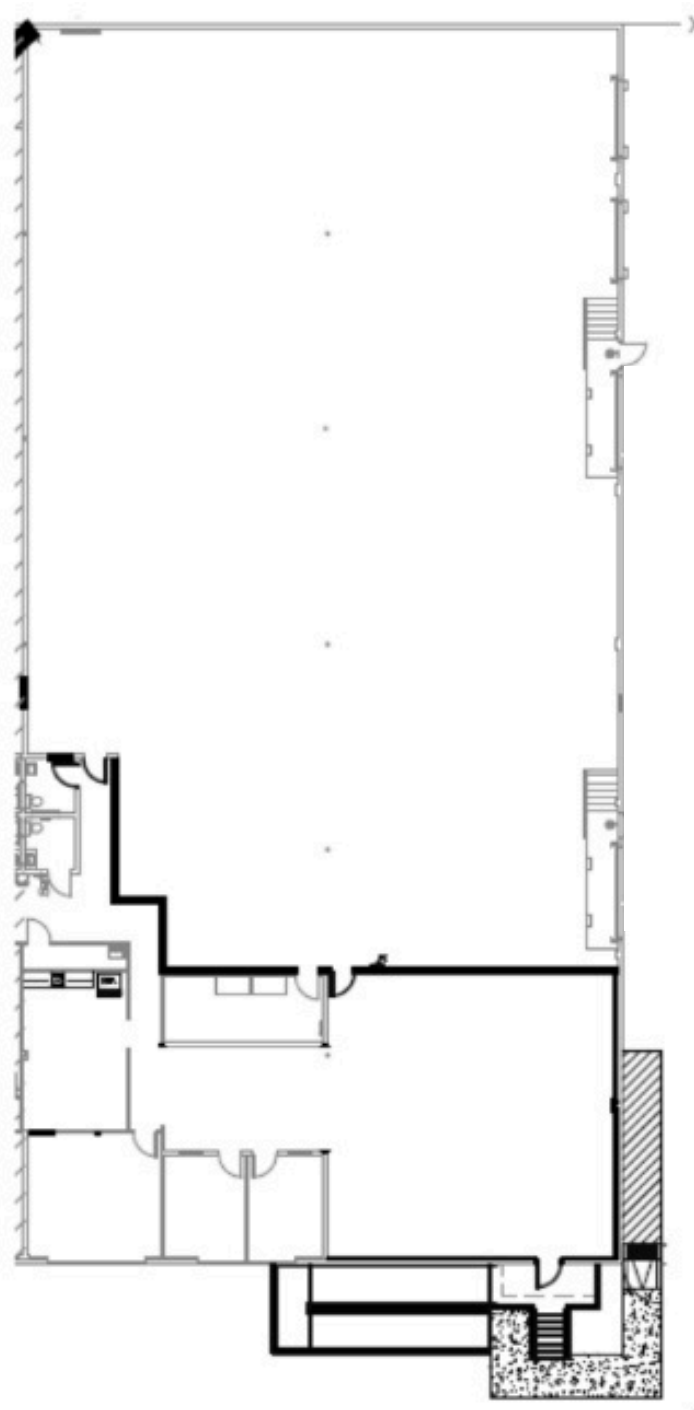
## Property Overview & Demographics

- 12,372 SF available
- 2,800 SF office
- 20' clear height
- 4 dock high doors
- New TPO roof
- 70' fenced and secured truck court
- 22 parking spaces
- 480V, 3-Phase power



	30 min	60 min	90 min
<b>Estimated population</b>	1,499,383	3,748,544	6,448,373
<b>Estimated households</b>	557,916	1,406,630	2,535,605
<b>Est. Average HH income</b>	\$108,302	\$108,442	\$103,312
<b>Total Businesses</b>	75,938	144,149	244,240
<b>Total employees</b>	826,041	1,523,797	2,541,348

# Floor plan







## Location

Strategically positioned in Orlando's established industrial corridor with direct access to I-4 and Central Florida's transportation network. This Premier Row location offers exceptional connectivity to Orlando International Airport and major logistics routes, while providing access to the region's diverse workforce. Ideal for manufacturing, distribution, and warehouse operations seeking operational efficiency in a proven industrial market.

**Kristin Griffin**  
Senior Vice President  
[Kristin.Griffin@jll.com](mailto:Kristin.Griffin@jll.com)  
+1 407 739 8285