


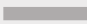
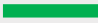





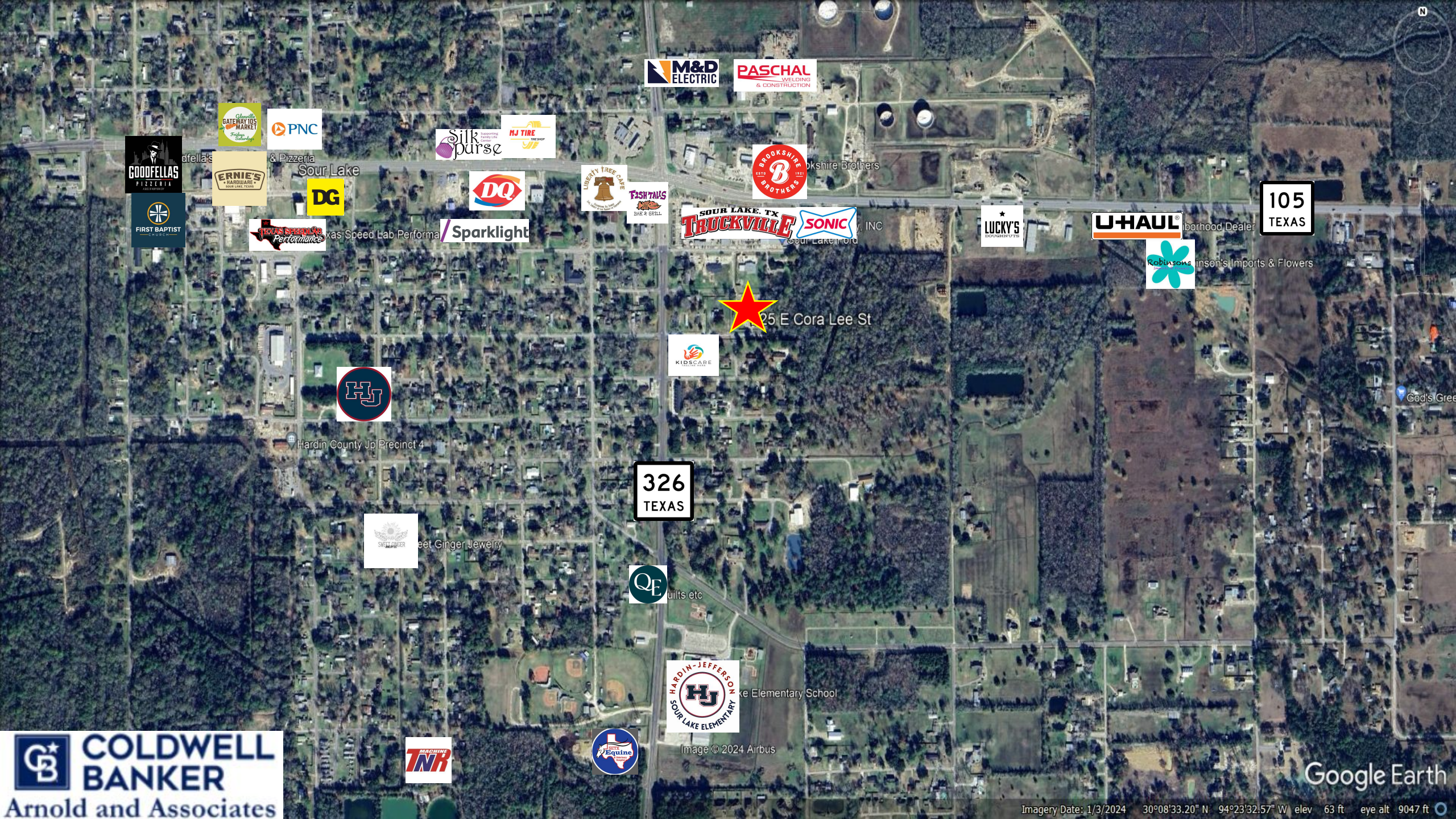
Transit Key

- IH 10 
- US 287/ Hwy 69/ Hwy 96 
 - US 287/ Hwy 69 
 - Hwy 96 
- TX 380 (MLK) 
- Hwy 90 (College St) 
- Hwy 105

Distance Estimates

- Jack Brooks Regional Airport: +/- 28 miles
- Louisiana Border: +/- 42 miles
- Port Arthur: +/- 35 miles
- Houston: +/- 98 miles
- Port of Houston: +/- 94 miles
- Port of Galveston: +/- 132 miles
- Port of Beaumont: +/- 16 miles

225 E Cora Lee St
Sour Lake, Texas



& Pizzeria

Sour Lake



Brookshire Brothers



Texas Speed Lab Performance



SONIC, INC



U-HAUL Neighborhood Dealer

105 TEXAS



Robinson's Imports & Flowers



25 E Cora Lee St



Hardin County Jp Precinct 4

326 TEXAS



Sweet Ginger Jewelry



quilts etc



Hardin-Jefferson Sour Lake Elementary School

Image © 2024 Airbus



Google Earth

Imagery Date: 1/3/2024 30°08'33.20" N 94°23'32.57" W elev 63 ft eye alt 9047 ft