

**FOR SALE  
OR LEASE**

# COMMERCIAL SITE

**2600 S. ORLANDO DRIVE SANFORD, FL 32773  
PID: 01-20-30-504-1500-0060**



## PROPERTY HIGHLIGHTS

- .94 Acre Site on HW 17-92 (Orlando Drive) Zoned GC-2 (Sanford)
- Former building was removed but existing curb cuts and utilities are stubbed out on the site with potential impact fee credits to a new owner.
- 260'+/- on HW 17-92 and 150'+/- depth
- Fronts 2 Roads (HW 17-92 and Hiawatha Ave)
- Site Zoned for Auto Sales
- Potential Owner Financing (See Broker for Details)

**Lease Rate: \$5,000 ABSOLUTE NNN**

**Sales Price: \$750,000**

## **CONTACT**

**Vincent F. Wolle, CCIM, SIOR**  
407.448.1823 *mobile*  
CREManager@Gmail.com

**Results Real Estate Partners, LLC**  
*Licensed Commercial Real Estate Brokers*  
108 Commerce Street, Suite 200  
Lake Mary, Florida 32746

407.647.0200 *main*  
407.647.0205 *fax*

www.ResultsREPartners.com

This information is from sources we deem reliable and is subject to prior sale, lease, withdrawal without notice, or change in prices, rates, or conditions. No representation is made as to the accuracy of any information furnished.

**FOR SALE  
OR LEASE**

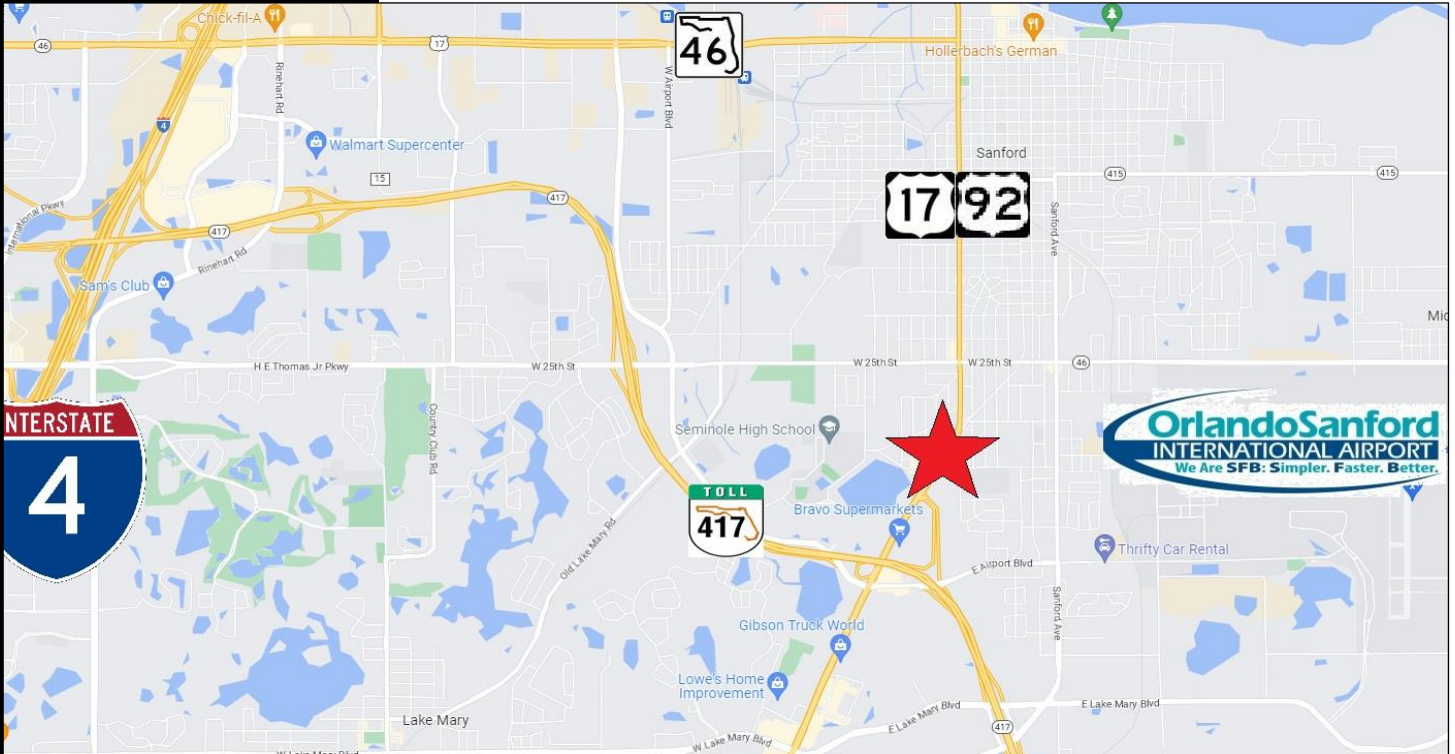
# COMMERCIAL SITE

**2600 S. ORLANDO DRIVE SANFORD, FL 32773**

**PID: 01-20-30-504-1500-0060**



**RESULTS**  
REAL ESTATE PARTNERS, LLC



## CONTACT

**Vincent F. Wolle, CCIM, SIOR**  
407.448.1823 *mobile*  
CREManager@Gmail.com

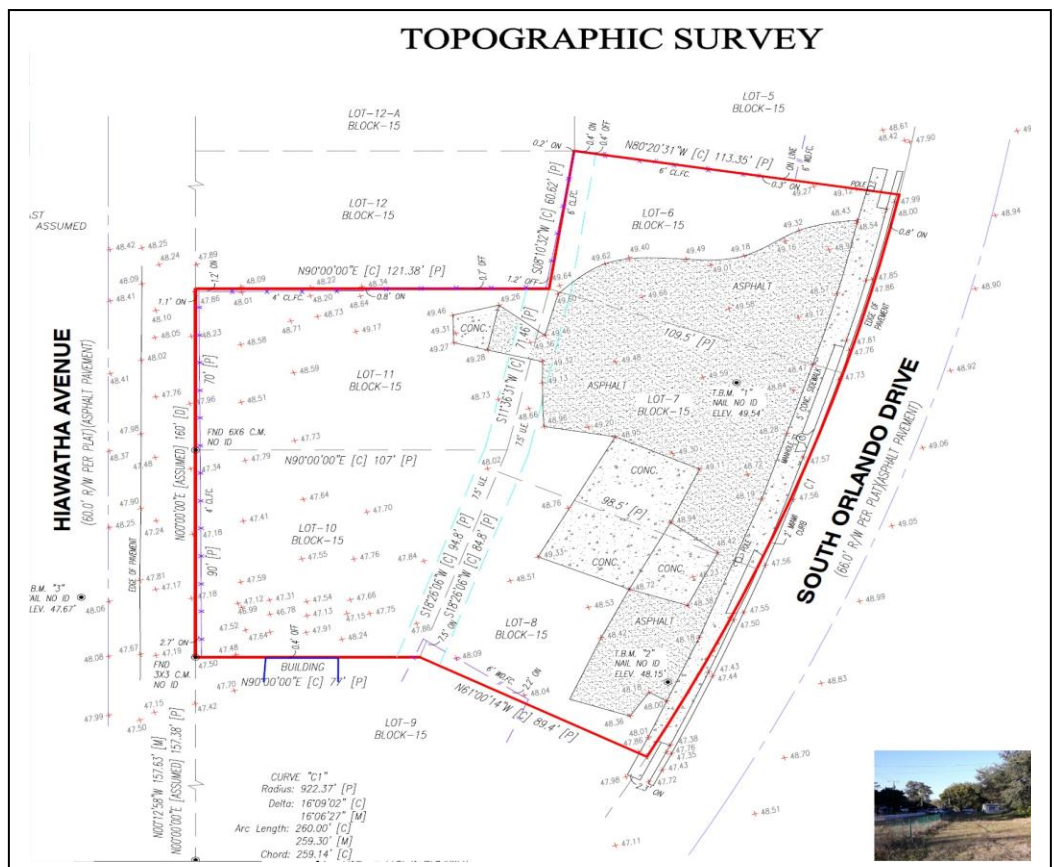
### Results Real Estate Partners, LLC

Licensed Commercial Real Estate Brokers  
108 Commerce Street, Suite 200  
Lake Mary, Florida 32746

407.647.0200 *main*  
407.647.0205 *fax*

www.ResultsREPartners.com

## TOPOGRAPHIC SURVEY



This information is from sources we deem reliable and is subject to prior sale, lease, withdrawal without notice, or change in prices, rates, or conditions. No representation is made as to the accuracy of any information furnished.