

4000 CIVIC CENTER DRIVE
SAN RAFAEL, CA



±2,367 RSF - ±40,854 RSF // Office or Medical for Lease

NEWMARK

HADEN ONGARO 415.526.7649 haden.ongaro@nmrk.com CA RE License #00916960
ALYSSA DOYLE 415.526.7652 alysa.doyle@nmrk.com CA RE License #02016068

Striking exterior to complement the high visibility



Class A Office Space For Lease
±2,367 RSF to ±40,854 RSF



\$3.75/SF, Full Service, Office
\$4.25/SF, Full Service, Medical



Impressive first and second
floor lobbies



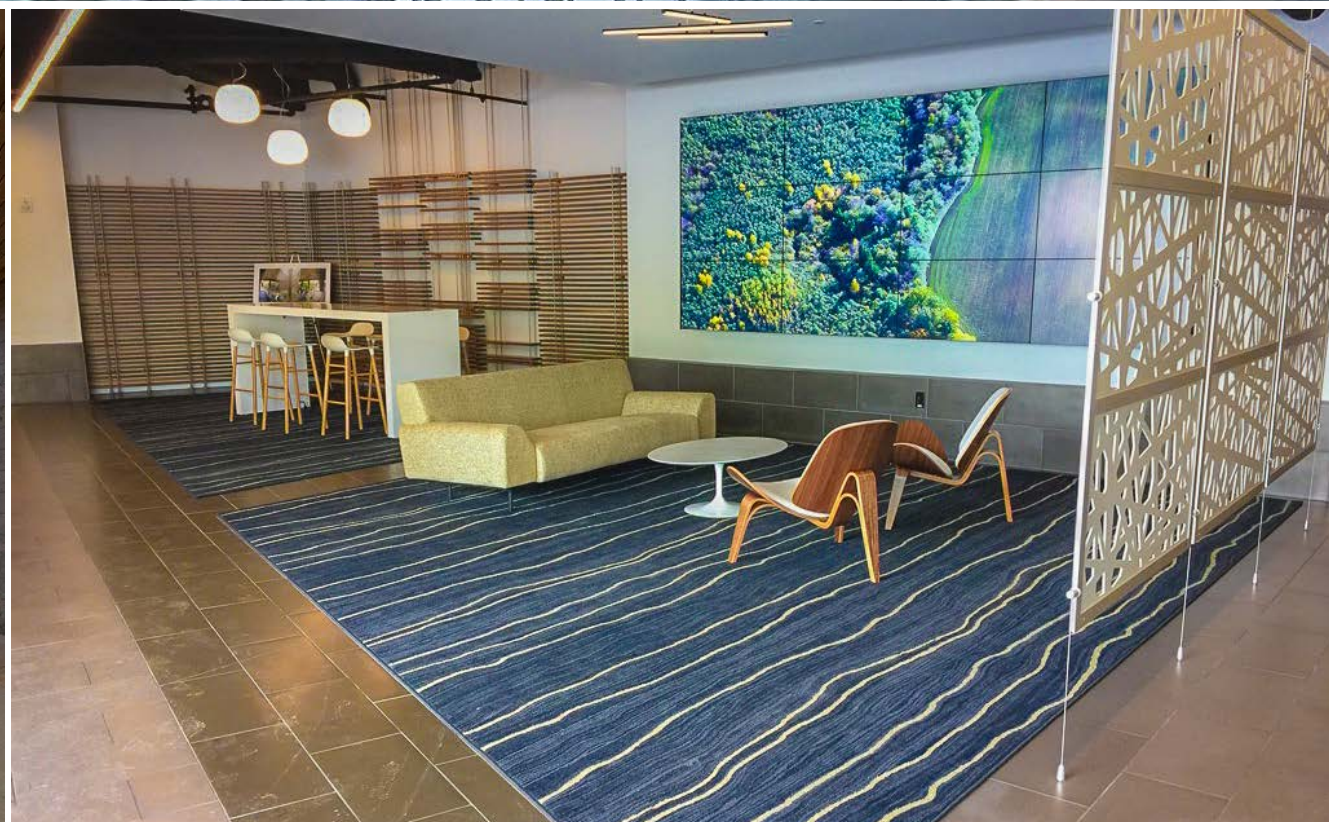
Attractive built-out office spaces
maximizing the impact of
stunning views



Beautiful landscaped tenant
amenities and breezeway to
tenant common area



Effective
way-finding signage



First Floor

AVAILABLE SPACE

Suite 101	±14,609 RSF
-----------	-------------



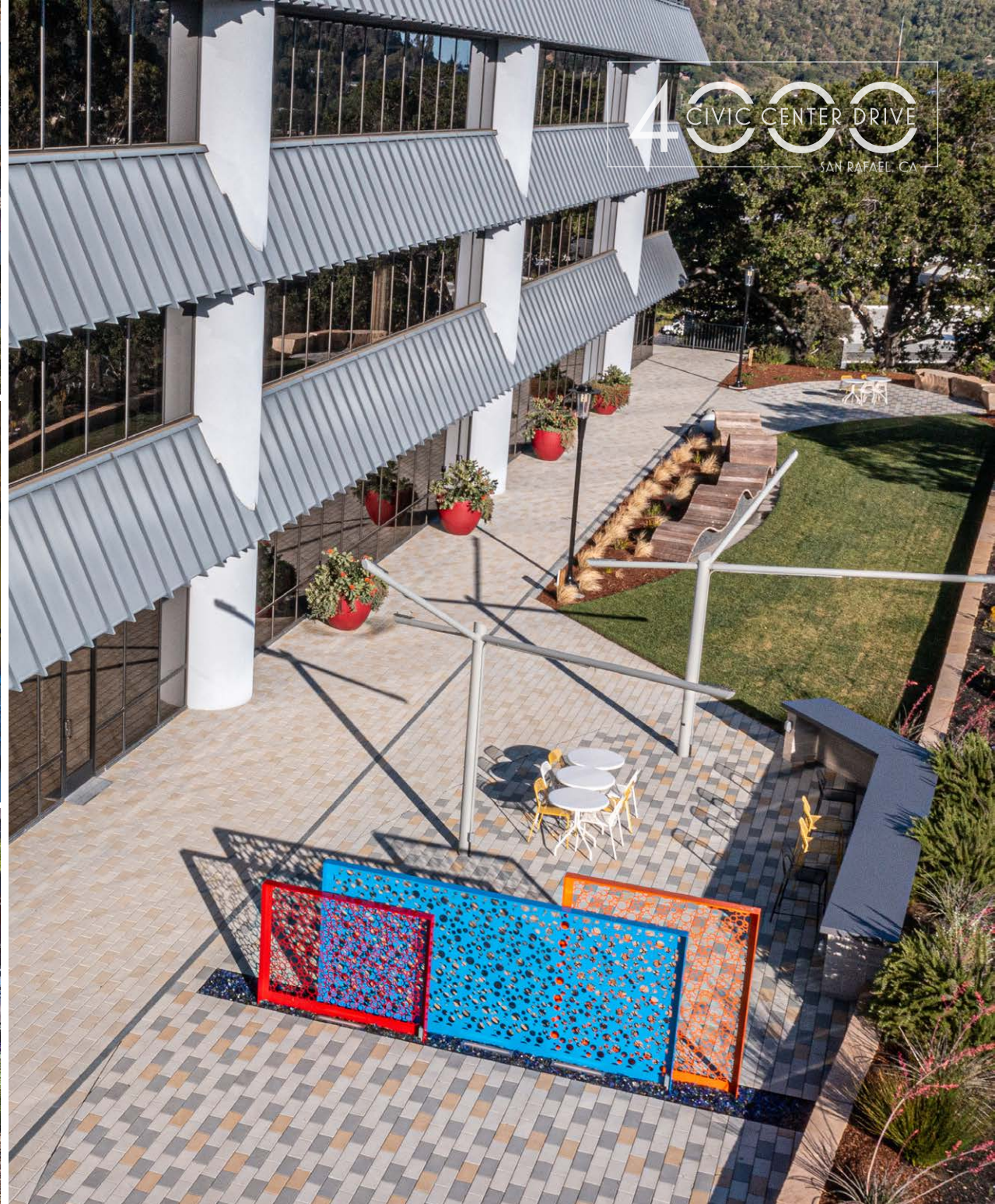
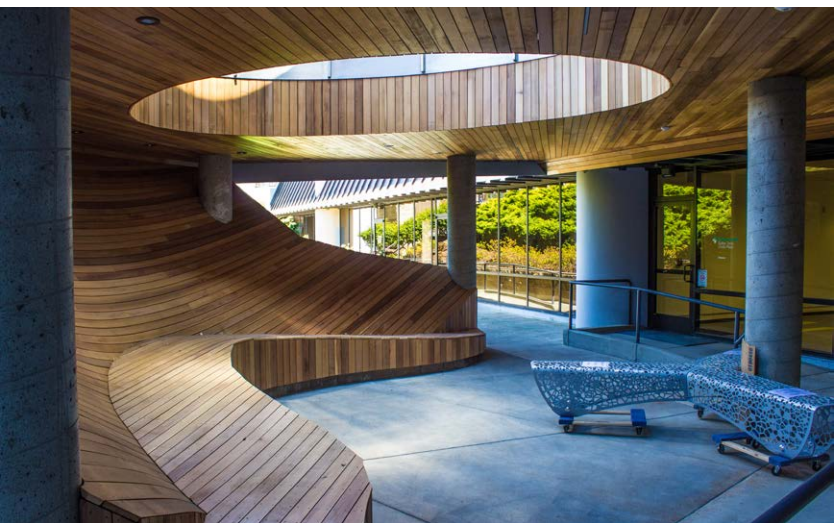
Third Floor

AVAILABLE SPACE

Suite 310	±8,954 RSF
Suite 320	±5,241 RSF
Suite 325	±2,367 RSF
Suite 330	±4,686 RSF
Suite 345	±4,997 RSF



Outdoor Space





KAISER PERMANENTE

SAFeway
BIG 5 SPORTING GOODS
Starbucks
FedEx Office

Walgreens

Mi Pueblo FOOD CENTER

CINEMARK

NORTHGATE MALL

4000 CIVIC CENTER DRIVE
SAN RAFAEL, CA

BOND-MARIN
SMART
AREA RAIL TRANSIT

EMBASSY SUITES
by Hilton

MARIN CIVIC CENTER

San Francisco

Location
a short walk to Northgate Mall Shopping Center

HADEN ONGARO 415.526.7649 haden.ongaro@nmrk.com CA RE License #00916960
ALYSSA DOYLE 415.526.7652 alyssa.doyle@nmrk.com CA RE License #02016068

NEWMARK

1101 Fifth Avenue, Suite 370, San Rafael, CA 94901 | t 415-526-7676 nmrk.com
The distributor of this communication is performing acts for which a real estate license is required. The information contained herein has been obtained from sources deemed reliable but has not been verified and no guarantee, warranty or representation, either express or implied, is made with respect to such information. Terms of sale or lease and availability are subject to change or withdrawal without notice.
MP-712.06/24 . Last updated October 3, 2024 4:22 PM