

# MEADOWS PLACE

200 North Main Street East Longmeadow, MA 01028



## OFFERING SUMMARY

Lease Rate:	\$400.00 per month (Gross)
Building Size:	2,596 SF
Available SF:	70 SF
Lot Size:	5.9 Acres
Number of Units:	10
Year Built:	1970
Renovated:	2020
Zoning:	Business A
Market:	Greater Springfield

## PROPERTY OVERVIEW

L&P Commercial is pleased to offer individual offices for lease at 200 N Main Street in East Longmeadow. Suite #3 offers 10 individual office rentals starting at \$400 per month. The monthly rent includes internet, shared conference room, waiting room, and. kitchenette.

Great little office space with everything you need to run your small business. Why spend \$\$\$ on space you don't need when you can; use a conference room for free, a kitchenette, waiting area, utilities and wifi, all in the base rent!

## PROPERTY HIGHLIGHTS

- Shared Conference Room, Kitchenette, and Waiting Area
- WIFI Included in Rent
- Free On Site Parking
- Close to Shopping and Restaurants



---

**William Low, Jr.**  
President  
413.237.9692  
bill@lowpicard.com

# MEADOWS PLACE

200 North Main Street East Longmeadow, MA 01028



---

**William Low, Jr.**  
President  
413.237.9692  
[bill@lowpicard.com](mailto:bill@lowpicard.com)



# MEADOWS PLACE

200 North Main Street East Longmeadow, MA 01028

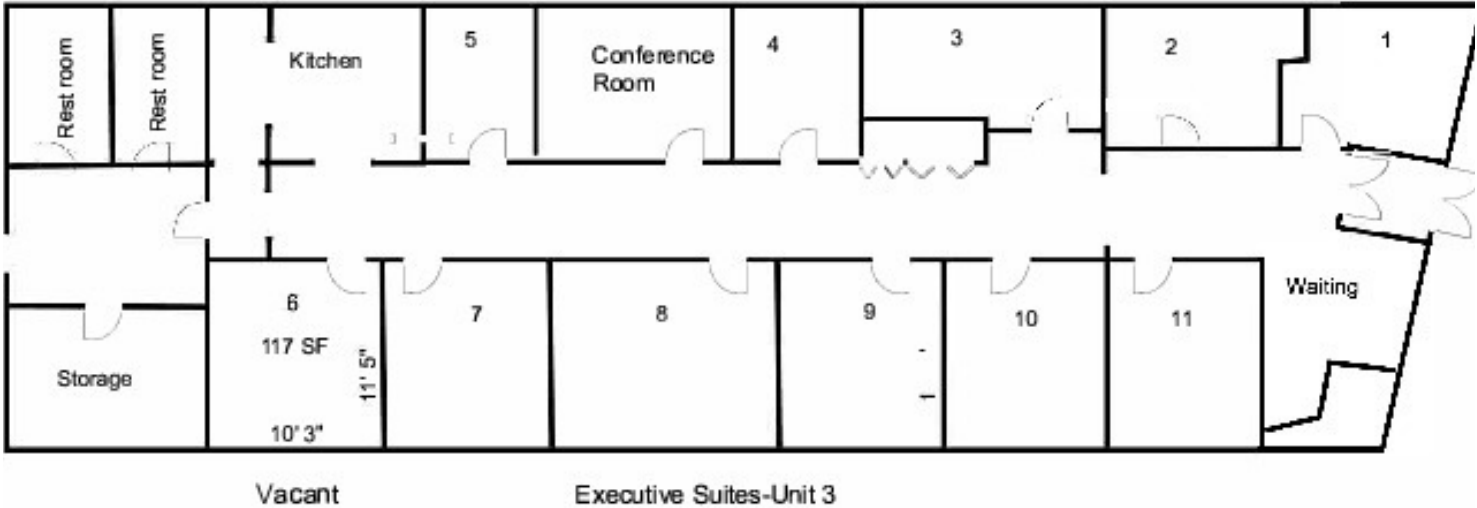


---

**William Low, Jr.**  
President  
413.237.9692  
[bill@lowpicard.com](mailto:bill@lowpicard.com)

# MEADOWS PLACE

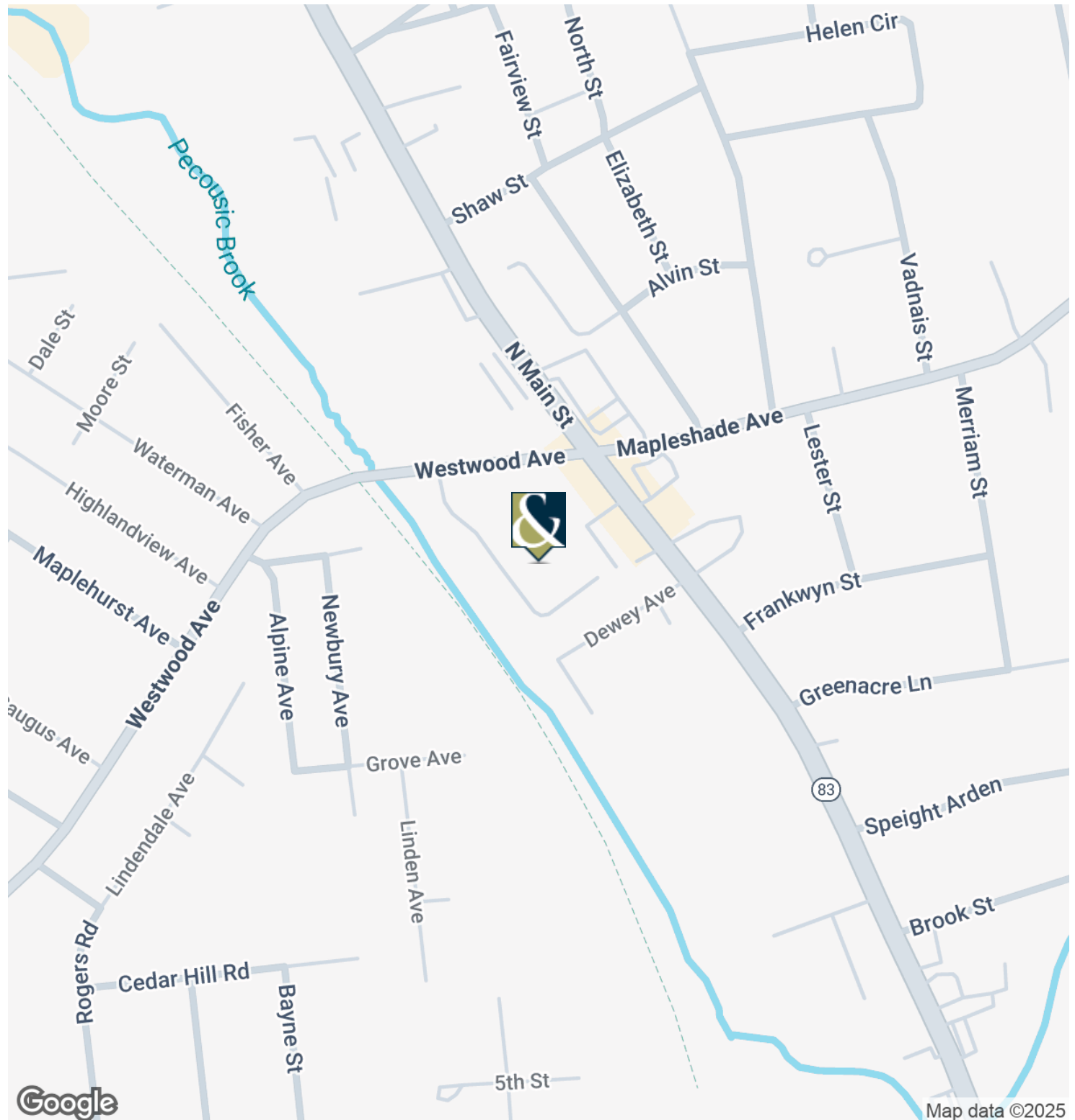
200 North Main Street East Longmeadow, MA 01028



William Low, Jr.  
President  
413.237.9692  
bill@lowpicard.com

# MEADOWS PLACE

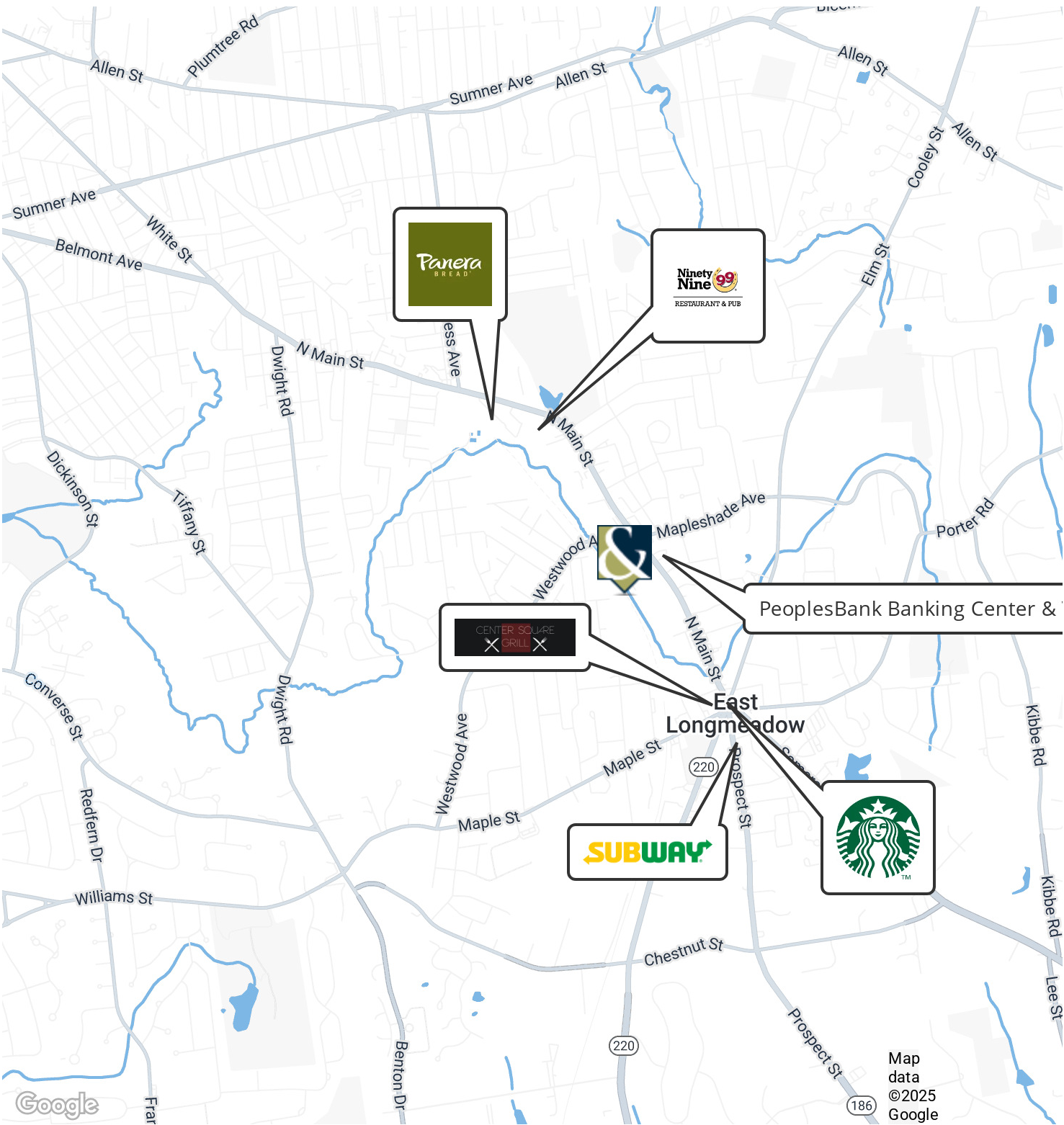
200 North Main Street East Longmeadow, MA 01028



William Low, Jr.  
President  
413.237.9692  
bill@lowpicard.com

# MEADOWS PLACE

200 North Main Street East Longmeadow, MA 01028

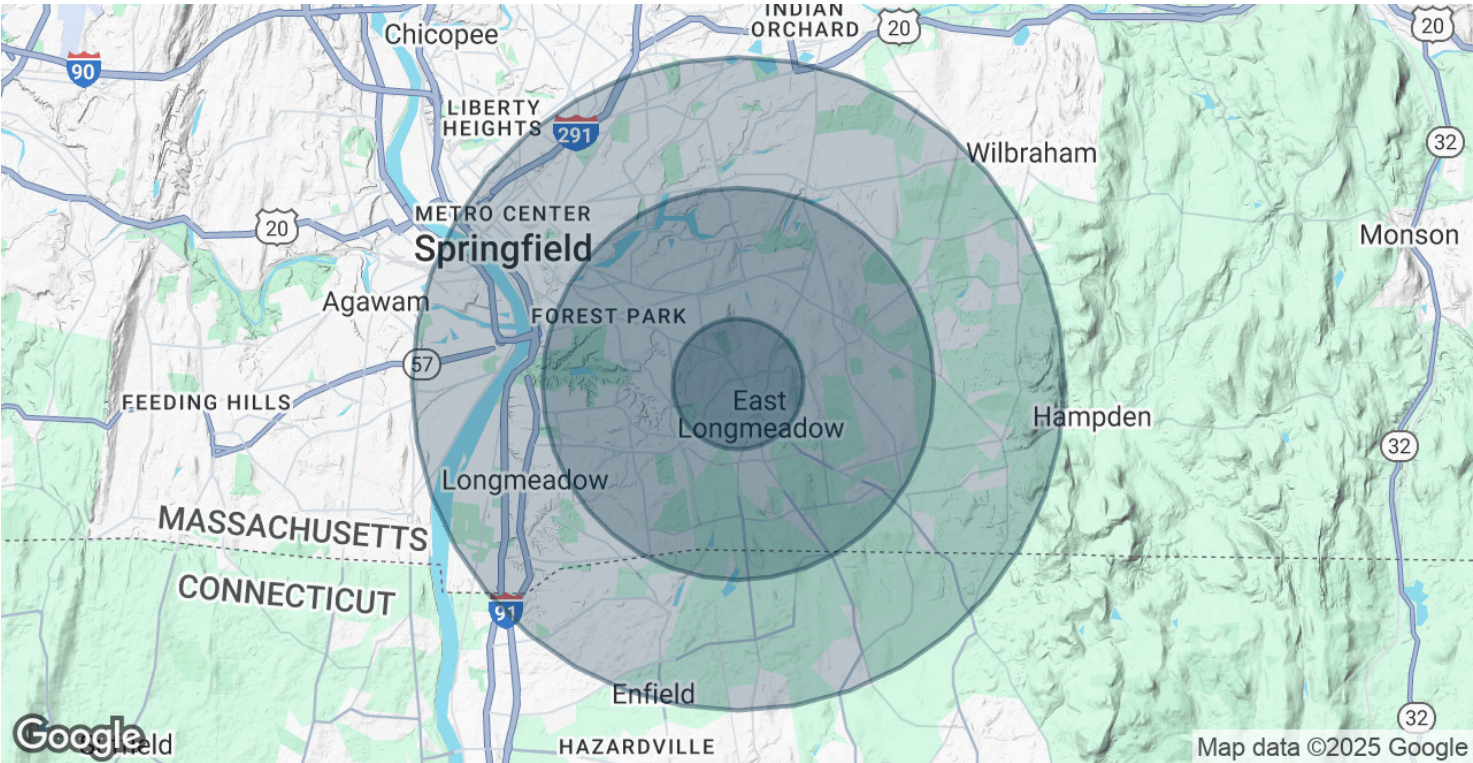


William Low, Jr.  
President  
413.237.9692  
bill@lowpicard.com



# MEADOWS PLACE

200 North Main Street East Longmeadow, MA 01028



POPULATION	1 MILE	3 MILES	5 MILES
Total Population	6,831	69,062	194,583
Average Age	45.5	38.6	35.0
Average Age (Male)	42.7	37.4	33.6
Average Age (Female)	47.7	40.5	36.3

HOUSEHOLDS & INCOME	1 MILE	3 MILES	5 MILES
Total Households	2,632	25,772	68,151
# of Persons per HH	2.6	2.7	2.9
Average HH Income	\$79,540	\$76,162	\$65,667
Average House Value	\$238,161	\$256,748	\$260,575

\* Demographic data derived from 2020 ACS - US Census



William Low, Jr.  
President  
413.237.9692  
bill@lowpicard.com