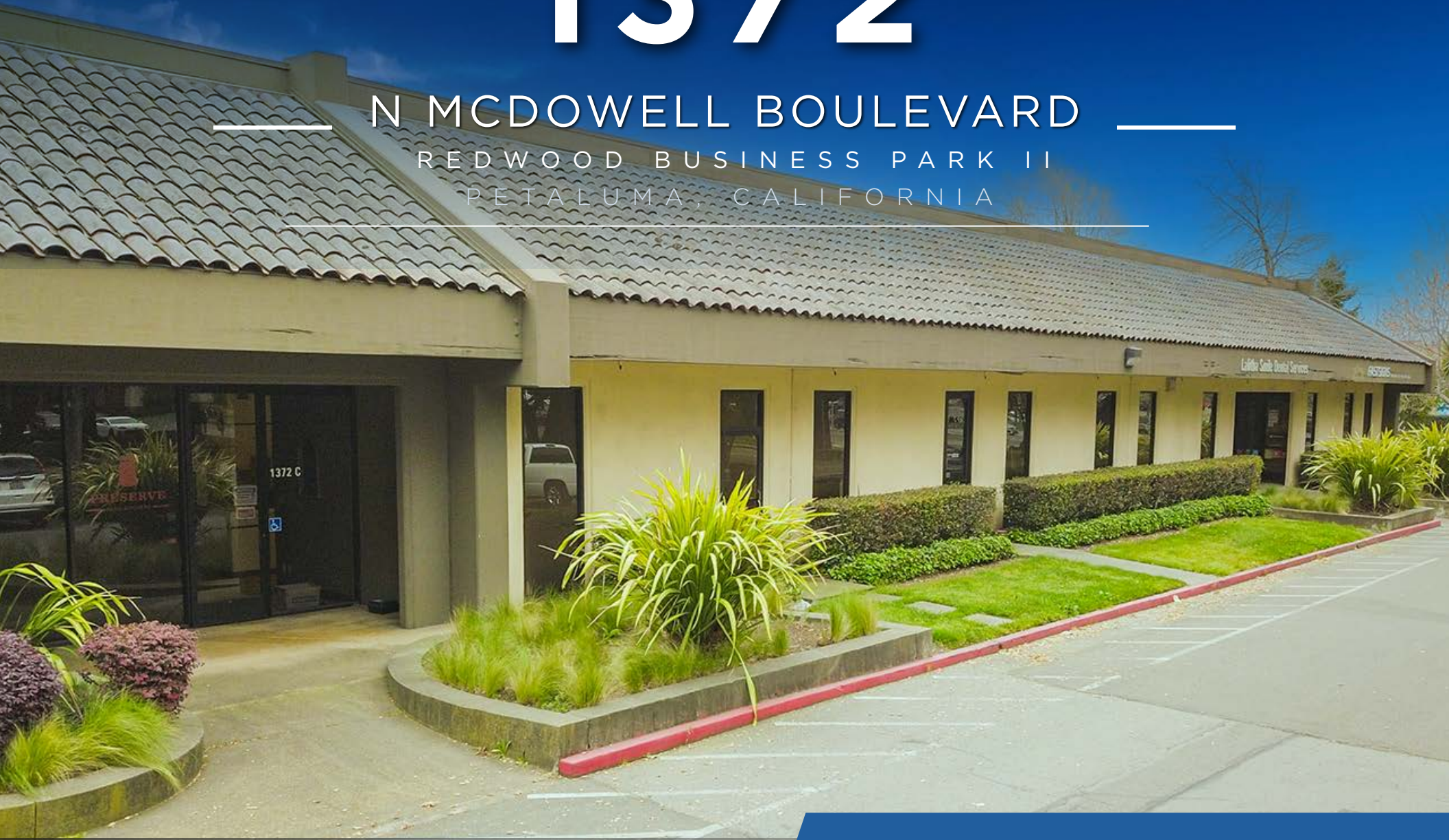


# 1372

N MCDOWELL BOULEVARD

REDWOOD BUSINESS PARK II  
PETALUMA, CALIFORNIA



**NEWMARK**

**CORNERSTONE**

**IMPROVED OFFICE SPACE FOR LEASE**

**±4,758 RF and ±3,752 RSF**

**\$1.35/RSF AND \$1.70/RSF/MONTH, MG**

## 1372 N. MCDOWELL BOULEVARD | PETALUMA | CA

REDWOOD BUSINESS PARK II

### BUILDING SIZE

±35,625 RSF

### YEAR BUILT

1984

### TOTAL AVAILABLE SPACE

- Suite A ±4,758 RSF (comprised of ±3,288 RSF warehouse and ±1,470 RSF of office)
- Suite S ±3,752 RSF

### PROPERTY HIGHLIGHTS

- Spaces can accommodate a variety of commercial uses
- Ample parking ratio of ±3.12/1,000 RSF
- Building is surrounded by restaurants and amenities

### MAJOR TENANTS INCLUDE

- Fastsigns
- Koda Physical Therapy
- Petaluma School of Ballet
- Strickland Law Group

## 1372 N. MCDOWELL BOULEVARD | PETALUMA | CA

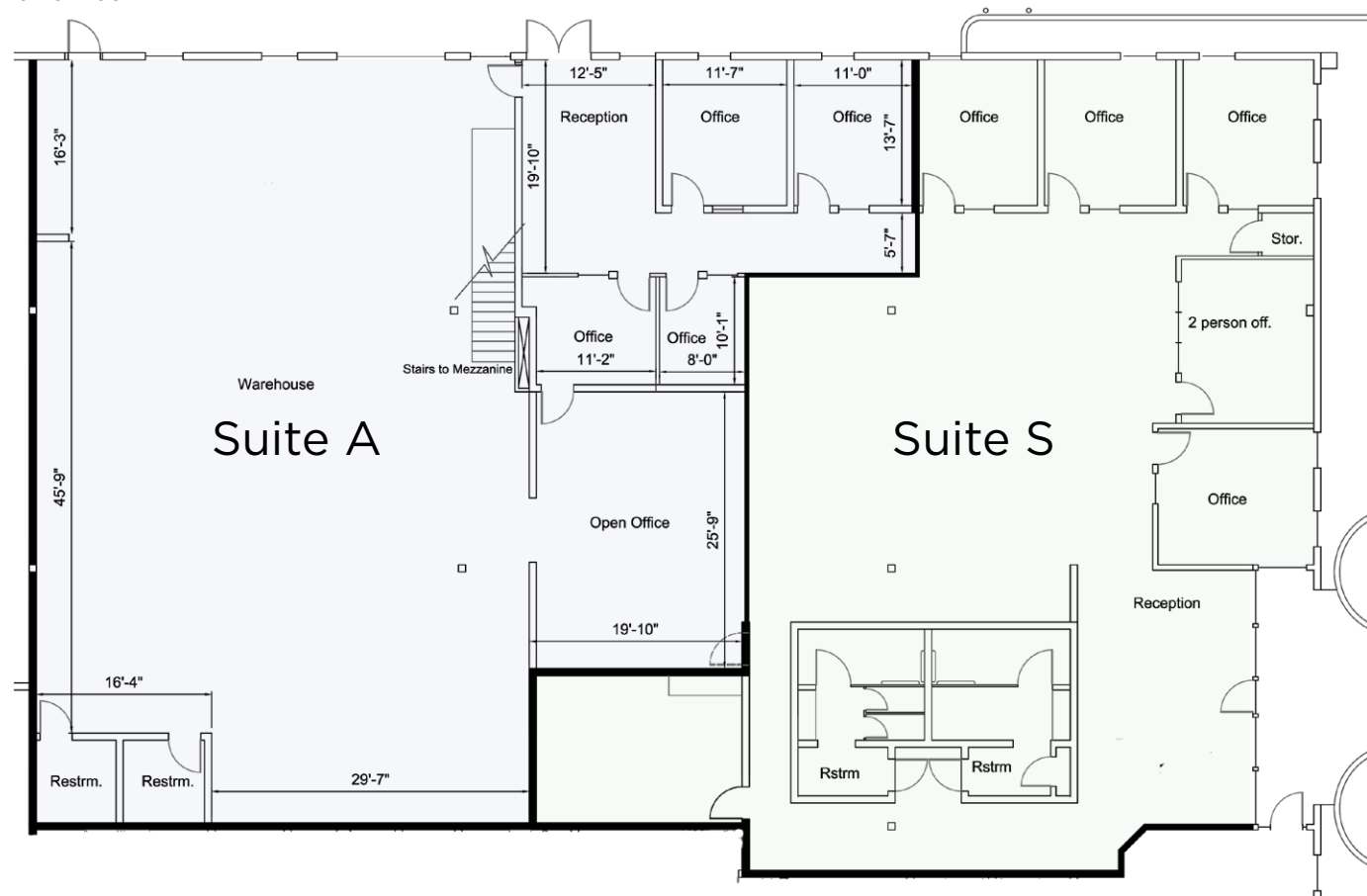
## REDWOOD BUSINESS PARK II

## Suite A

- ±4,758 RSF
- Space is comprised of ±3,288 RSF of warehouse and ±1,470 RSF of office
- 4 private offices
- Open office area
- Reception area
- 10' roll-up door
- \$1.35/RSF/Month, MG

## Suite S

- ±3,752 RSF
- 4 private offices
- Reception area
- Conference room
- Large break room
- IT/storage room
- 2 restrooms in-suite
- \$1.70/RSF/Month, MG





1372 N. MCDOWELL BOULEVARD | PETALUMA | CA  
REDWOOD BUSINESS PARK II





# 1372 N. MCDOWELL BOULEVARD | PETALUMA | CA

## REDWOOD BUSINESS PARK II

### ABOUT PETALUMA

Just an hour north of San Francisco you'll discover picturesque Petaluma. Nestled on the Petaluma River between rolling farmlands and the rugged coast, Petaluma melds Hometown USA with sophisticated Wine Country style.

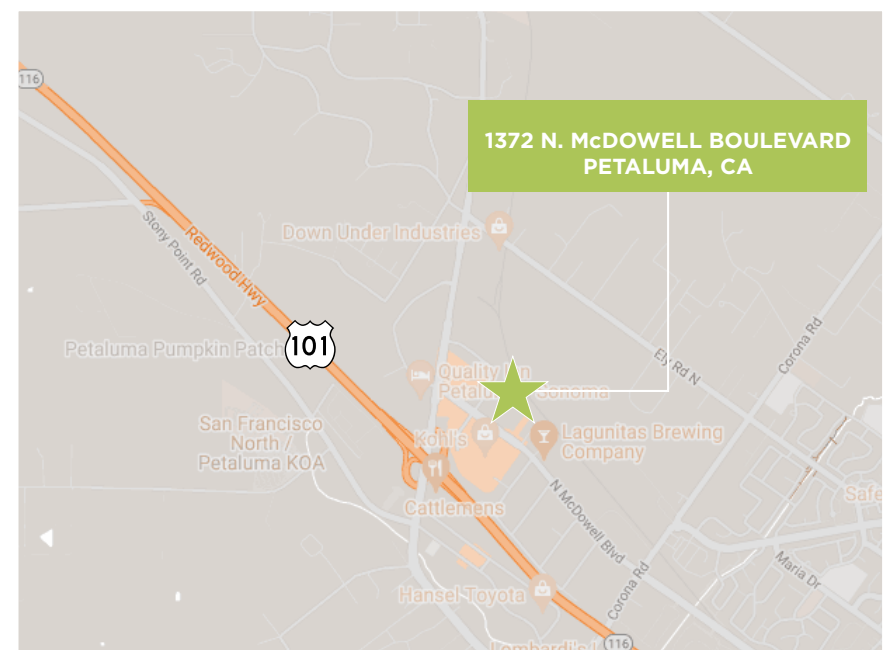
Petaluma boasts outlet, antique, gallery and boutique shopping along with cafes, farm-to-table, pubs, bistros dining. Hosting fairs, festivals, and local marketplaces in the historic downtown area, promoting local arts and activities all year long.

To learn more about Petaluma, go to the [Visit Petaluma](#) website.

### LOCATION

Adjacent to US Highway 101  
4 miles north of downtown Petaluma  
Under 50 minutes drive from San Francisco  
Sonoma County Airport is 20 miles north.

No Diving





# 1372 N. MCDOWELL BOULEVARD | PETALUMA | CA

## REDWOOD BUSINESS PARK II

### ABOUT CORNERSTONE

Cornerstone is a North Bay commercial property owner and developer. Locally owned and managed, Cornerstone prides itself on caring for its clients by providing unmatched administrative and facilities-based service. Customizing terms and space to each tenant's needs provides the flexibility needed by all growing businesses. Cornerstone has the in-house building management expertise to efficiently execute both large and small projects. In addition to leasing their building spaces, Cornerstone is committed to transforming the North Bay and being a community leader in finding solutions to address issues such as housing, childcare, public transportation and workforce training. Their mission is to support local, sustainable activities and bring more business to the North Bay. As a forward-thinking and innovative company, Cornerstone continues to identify opportunities in the community where they can make a difference.



# 1372

## N MCDOWELL BOULEVARD

PETALUMA, CALIFORNIA

### EXCLUSIVE LISTING TEAM

**HADEN ONGARO**

Executive Managing Director  
Market Leader

t 415-526-7649

haden.ongaro@nmrk.com

CA RE LIC#00916960

**TOM POSER**

Senior Managing Director

t 415-526-7651

tom.poser@nmrk.com

CA RE LIC#01475459

**JOE MCCALLUM**

Associate

t 415-526-7672

joe.mccallum@nmrk.com

CA RE LIC#02048815

**SHANE ZUVELLA**

Associate

t 415-526-7677

shane.zuvella@nmrk.com

CA RE LIC#02125003

1101 Fifth Avenue, Suite 370, San Rafael, CA 94901

415-526-7676 nmrk.com

**NEWMARK**

**CORNERSTONE**

The distributor of this communication is performing acts for which a real estate license is required. The information contained herein has been obtained from sources deemed reliable but has not been verified and no guarantee, warranty or representation, either express or implied, is made with respect to such information. Terms of sale or lease and availability are subject to change or withdrawal without notice. Last updated: July 2, 2025 1:57 PM