



# Harbor Plaza

2790 Harbor Boulevard  
Costa Mesa, California 92626

## Property Highlights

- Mixed-Use 3 Story Retail/Office Building.
- 1,047 SF to 1,587 SF SF Retail Available.
- Hard Corner of Harbor Boulevard & Adam Avenue.
- Over 80,000 Cars Per Day Intersection.
- Easy Access to 405, 55 & 73 Freeways.
- Blocks From Orange Coast College + Student Housing.

DEMOGRAPHICS	1 MILE	3 MILES	5 MILES
Total Households	7,890	70,320	183,065
Total Population	19,858	189,809	511,725
Average HH Income	\$109,662	\$116,801	\$115,858

SPACES	LEASE RATE	NETS	SPACE SIZE
Suite 101	\$4.00 SF/month	\$0.50	1,047 SF
Suite 107/109	\$4.00 SF/month	\$0.70	1,587 SF

### Steve Liu

Executive Vice President | 949.468.2385 | C: 714.349.3547  
sliu@naicapital.com | CalDRE #01323150

### Alex Tohidian

Associate | 949.438.2335 | C: 949.355.1979  
atohidian@naicapital.com | CalDRE #02185779

### Nikki Liu

Senior Associate | 949.468.2386 | C: 818.744.3111  
nliu@naicapital.com | CalDRE #02038755





**Steve Liu**

Executive Vice President | 949.468.2385 | C: 714.349.3547  
sliu@naicapital.com | CalDRE #01323150

**Alex Tohidian**

Associate | 949.438.2335 | C: 949.355.1979  
atohidian@naicapital.com | CalDRE #02185779

**Nikki Liu**

Senior Associate | 949.468.2386 | C: 818.744.3111  
nliu@naicapital.com | CalDRE #02038755





**FOR LEASE**



**STRIP CENTER**



**1,047 - 1,587 SF**



Suite 101 - 1,047 SF



Suite 107/109 - 1,587 SF

**Steve Liu**

Executive Vice President | 949.468.2385 | C: 714.349.3547  
sliu@naicapital.com | CalDRE #01323150

**Alex Tohidian**

Associate | 949.438.2335 | C: 949.355.1979  
atohidian@naicapital.com | CalDRE #02185779

**Nikki Liu**

Senior Associate | 949.468.2386 | C: 818.744.3111  
nliu@naicapital.com | CalDRE #02038755





**Steve Liu**

Executive Vice President | 949.468.2385 | C: 714.349.3547  
sliu@naicapital.com | CalDRE #01323150

**Alex Tohidian**

Associate | 949.438.2335 | C: 949.355.1979  
atohidian@naicapital.com | CalDRE #02185779

**Nikki Liu**

Senior Associate | 949.468.2386 | C: 818.744.3111  
nliu@naicapital.com | CalDRE #02038755





FOR LEASE

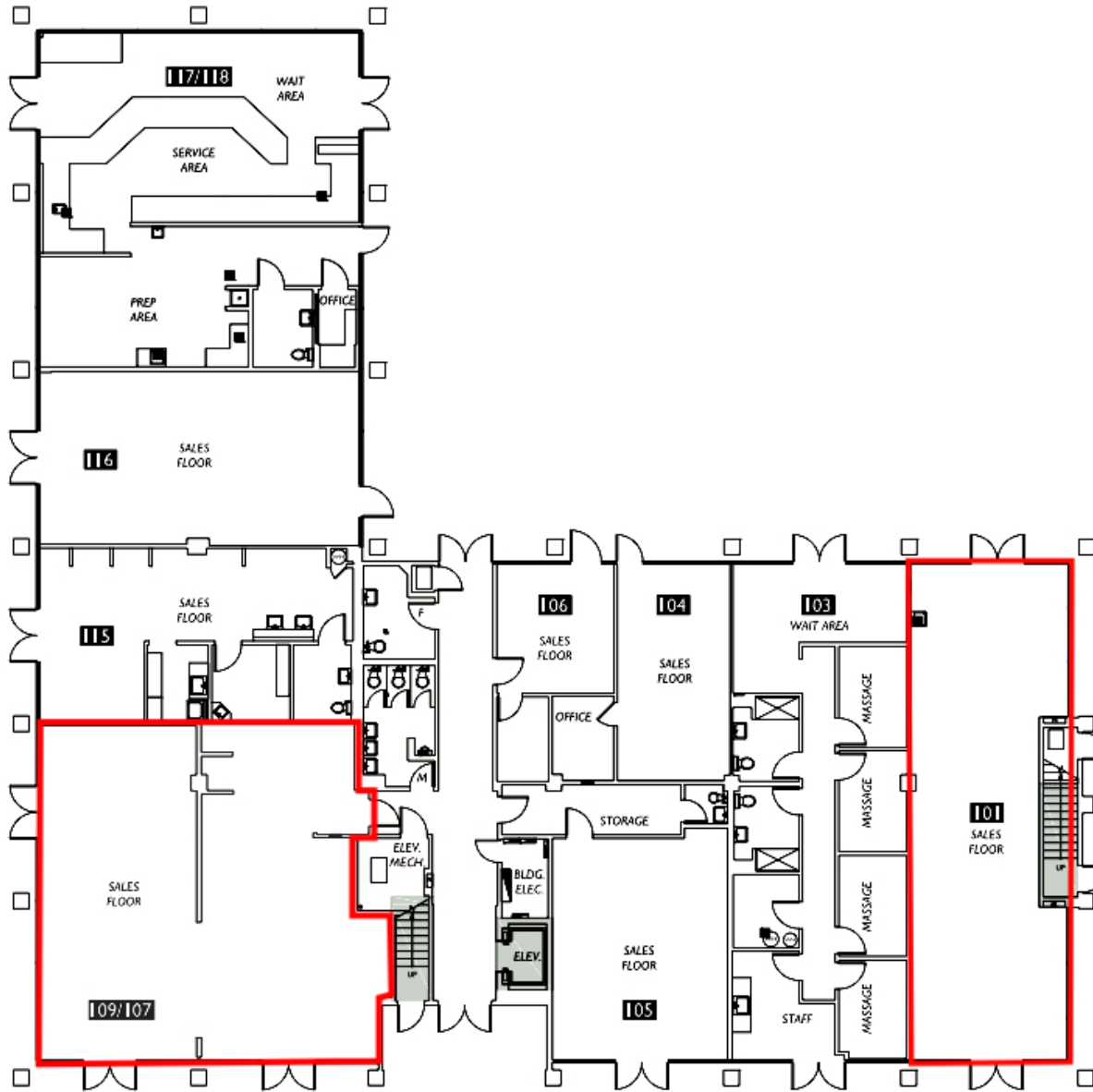


STRIP CENTER



1,047 - 1,587 SF

Adams Avenue



Suite #	Rentable Area
Suite 101	1,047
Suite 103	1,242
Suite 104	437
Suite 105	736
Suite 106	285
Suite 107/109	1,587
Suite 115	783
Suite 116	806
Suite 117/118	1,535

Area Analysis performed in accordance with ANSI/BOMA Z65.6-2012 Standard.

Harbor Boulevard

**Steve Liu**

Executive Vice President | 949.468.2385 | C: 714.349.3547  
 sliu@naicapital.com | CalDRE #01323150

**Alex Tohidian**

Associate | 949.438.2335 | C: 949.355.1979  
 atohidian@naicapital.com | CalDRE #02185779

**Nikki Liu**

Senior Associate | 949.468.2386 | C: 818.744.3111  
 nliu@naicapital.com | CalDRE #02038755





FOR LEASE



STRIP CENTER



1,047 - 1,587 SF



**Steve Liu**

Executive Vice President | 949.468.2385 | C: 714.349.3547  
sliu@naicapital.com | CalDRE #01323150

**Alex Tohidian**

Associate | 949.438.2335 | C: 949.355.1979  
atohidian@naicapital.com | CalDRE #02185779

**Nikki Liu**

Senior Associate | 949.468.2386 | C: 818.744.3111  
nliu@naicapital.com | CalDRE #02038755





POPULATION	1 MILE	3 MILES	5 MILES
Total Population	19,858	189,809	511,725
Average Age	37.6	38.6	38.9
Average Age (Male)	36.8	38.0	38.3
Average Age (Female)	39.0	39.4	39.9
HOUSEHOLDS & INCOME	1 MILE	3 MILES	5 MILES
Total Households	7,890	70,320	183,065
# of Persons per HH	2.5	2.7	2.8
Average HH Income	\$109,662	\$116,801	\$115,858
Average House Value	\$567,561	\$659,946	\$698,469
RACE	1 MILE	3 MILES	5 MILES
% White	73.8%	65.4%	58.0%
% Black	1.6%	1.4%	1.1%
% Asian	9.7%	12.5%	15.9%
% Hawaiian	0.8%	0.5%	0.4%
% American Indian	0.0%	0.5%	0.5%
% Other	6.7%	13.6%	17.8%

2020 American Community Survey (ACS)



**Steve Liu**

Executive Vice President | 949.468.2385 | C: 714.349.3547  
sliu@naicapital.com | CalDRE #01323150

**Alex Tohidian**

Associate | 949.438.2335 | C: 949.355.1979  
atohidian@naicapital.com | CalDRE #02185779

**Nikki Liu**

Senior Associate | 949.468.2386 | C: 818.744.3131  
nliu@naicapital.com | CalDRE #02038755