

LIBERTY HEARTLAND LOGISTICS CENTER

FOUR BUILDING INDUSTRIAL PARK COMPRISED OF 2.3 MILLION SF +



Marketed By:



OPUS
THE OPUS GROUP

NEWMARK
ZIMMER

Michael L. VanBuskirk
816-512-1010
mvanbuskirk@nzimmer.com

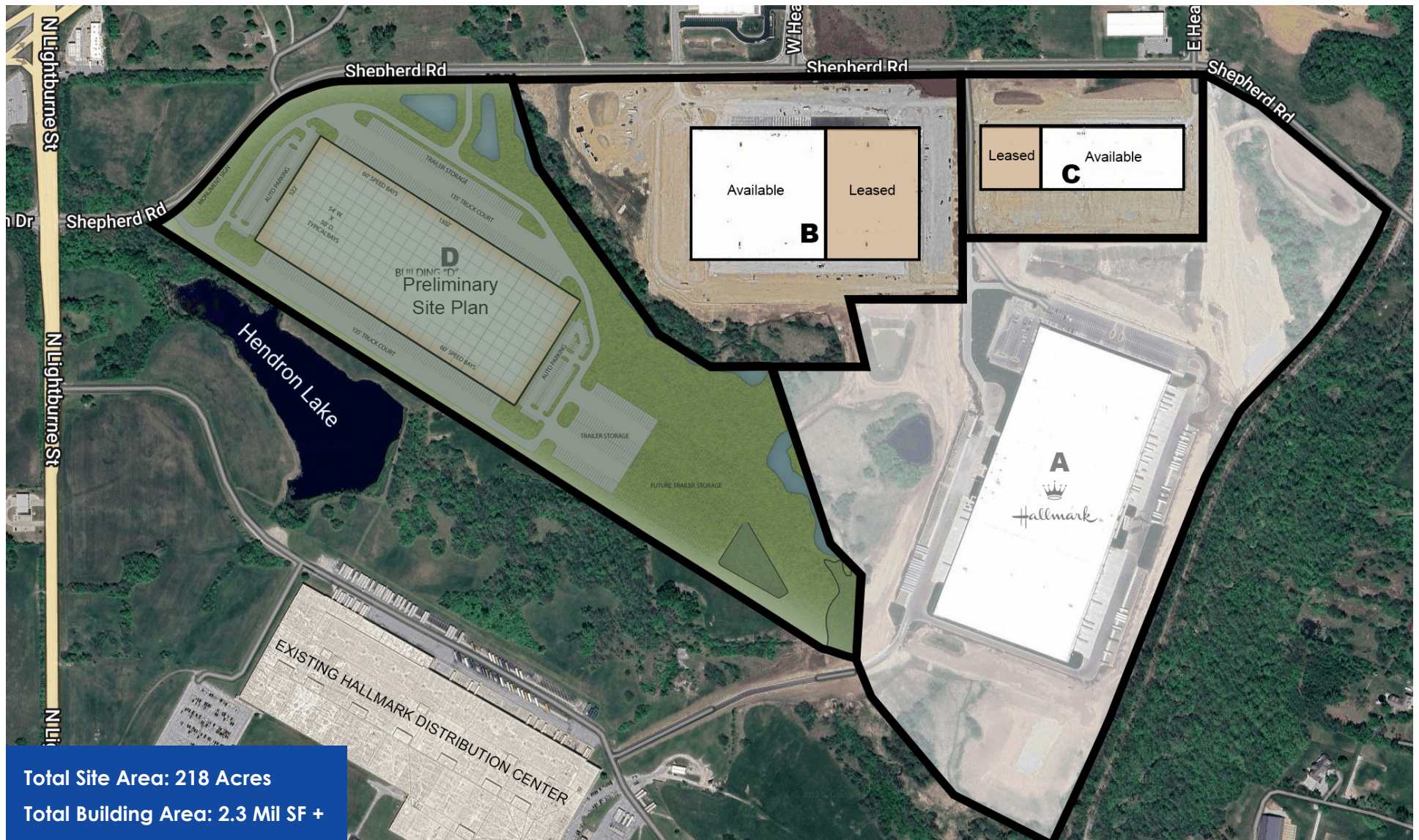
Mark C. Long
816-512-1011
mlong@nzimmer.com

John F. Hassler
816-268-4208
jhassler@nzimmer.com

Scott E. Bluhm
816-268-4224
sbluhm@nzimmer.com

Overall Site Plan

LIBERTY HEARTLAND LOGISTICS
CENTER

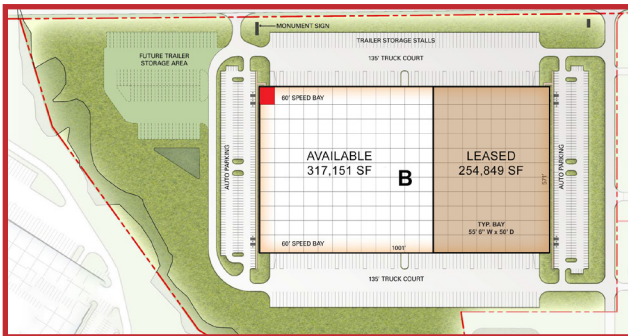


Building Overview

LIBERTY HEARTLAND LOGISTICS
CENTER

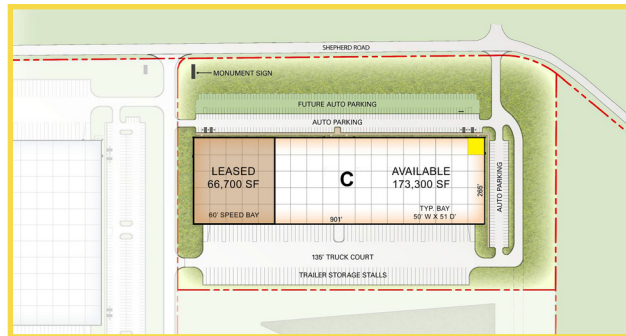
Building B

Building Area: $\pm 572,000$ SF
Space Available: $\pm 317,151$ SF
Site Area: 46.73 Acres
Speculative Office Under Construction
Auto Parking: 547 Stalls
Drive-In Doors: 4
Docks Provided: 76 (30 future)
Trailer Storage: 152 Stalls (94 future)



Building C

Building Area: $\pm 240,000$ SF
Space Available: $\pm 173,300$ SF
Speculative Office Under Construction
Site Area: 19.40 Acres
Auto Parking: 259 Stalls
Drive-In Doors: 2
Docks Provided: 32 (20 future)
Trailer Storage: 67 Stalls



Building D

Building Area: $\pm 676,000$ SF
Site Area: 66 Acres
Auto Parking: 337 Stalls
Drive-In Doors: 4
Docks Provided: 68
Trailer Storage: 155 Stalls
Site and building plan flexible and can be adjusted based on requirement.



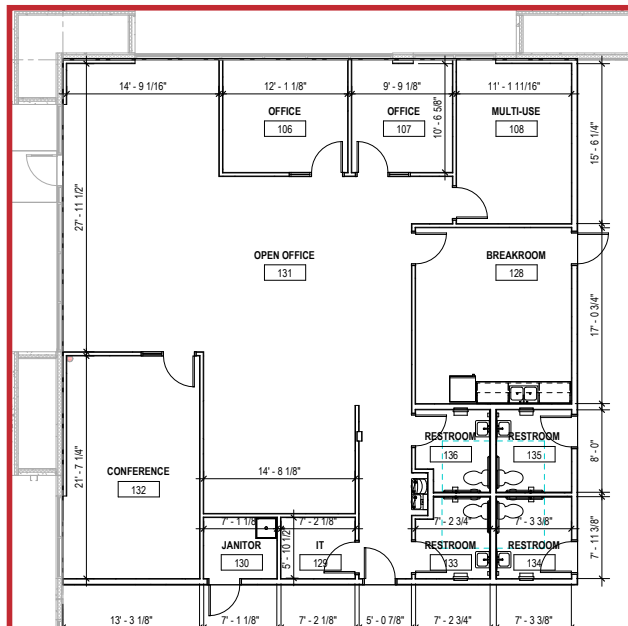
Building B Details

LIBERTY HEARTLAND LOGISTICS
CENTER

Building Size	± 572,000 SF
Space Available	± 317,151 SF
Land Area	46.73 Acres
Office Area	± 2,550 SF speculative office space under construction
Building Dimensions	571' x 1,001' (±)
Construction	Precast concrete panels and structural steel
Clear Height	36'
Column Spacing	55' 6" W x 50' D typical; 60' D at loading bays
Bay Size	31,690 +/- SF
Loading Dock Positions Available	110 (76 dock position + 30 future dock positions)
Equipped Docks	76 dock positions with manual 9'x10' dock doors, 7'x8' mechanical levelers with 45,000lb capacity, integral dock bumpers and dock seals
Drive In Doors	4 motorized drive in doors
Auto Parking	547
Truck Court	135' total, 60' dock slab
Trailer Storage	152 stalls; 92 potential future remote trailer stalls
Roof	R-20, 60-mil TPO mechanically fastened roof system
Floor	7" unreinforced 4,000 psi concrete slab on 4" of compacted granular fill
Fire Suppression	ESFR
Heating	Gas-fired make-up air units
Lighting	High bay LED fixtures, 30 foot-candle
Windows	Aluminum frame 1" insulated glazing panel clerestory windows
Power	4,000A; 480V 3-phase service to building
Zoning	M-1; Light Industrial District
Electric Service	Evergy
Water	City of Liberty
Gas	Spire
Sewer	City of Liberty

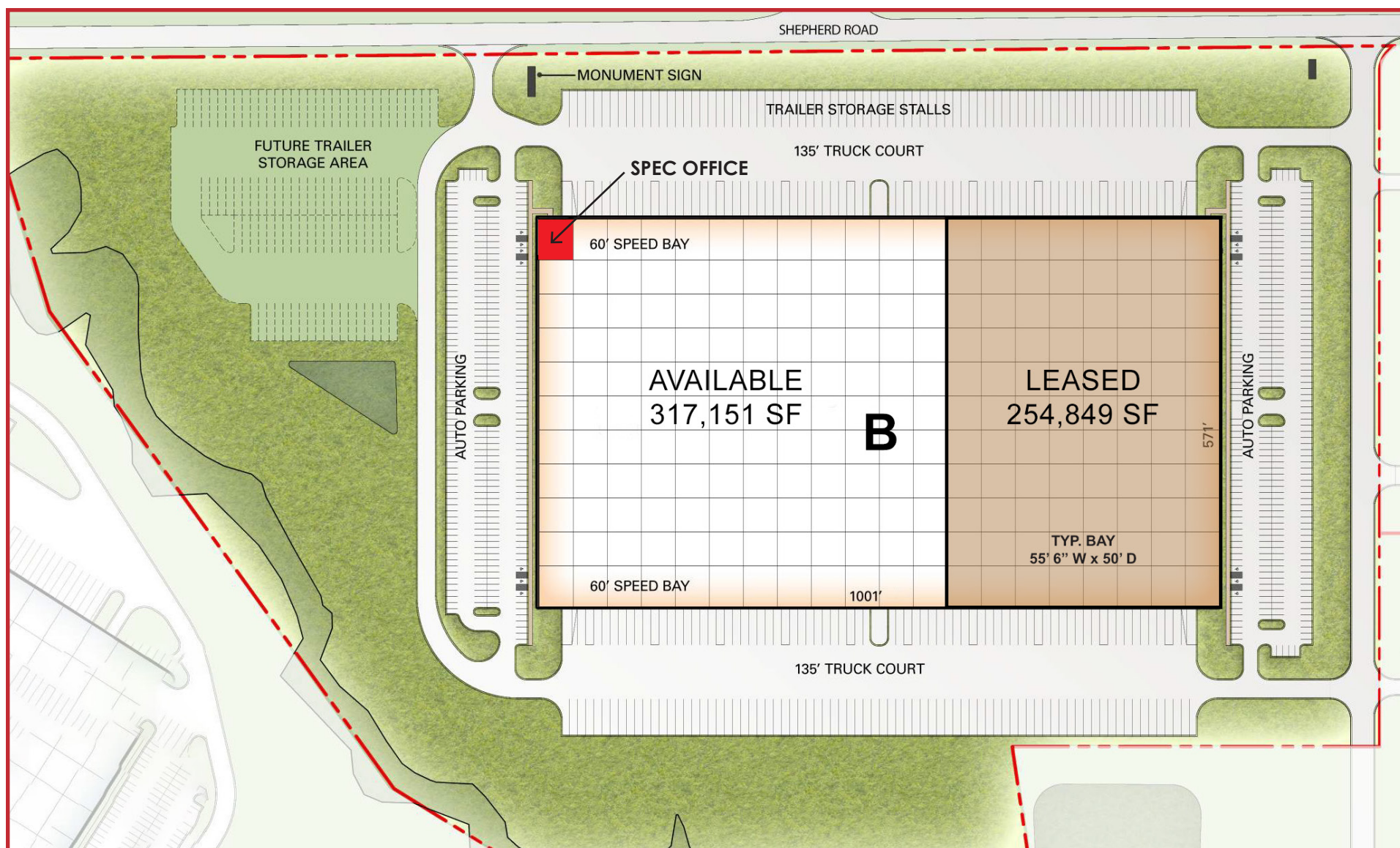


SPEC OFFICE UNDER CONSTRUCTION



Building B Site Plan

LIBERTY HEARTLAND LOGISTICS
CENTER

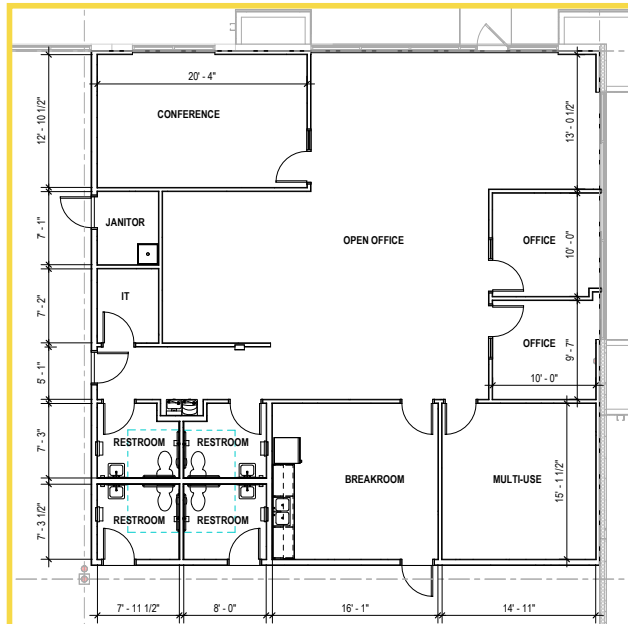


Building C Details

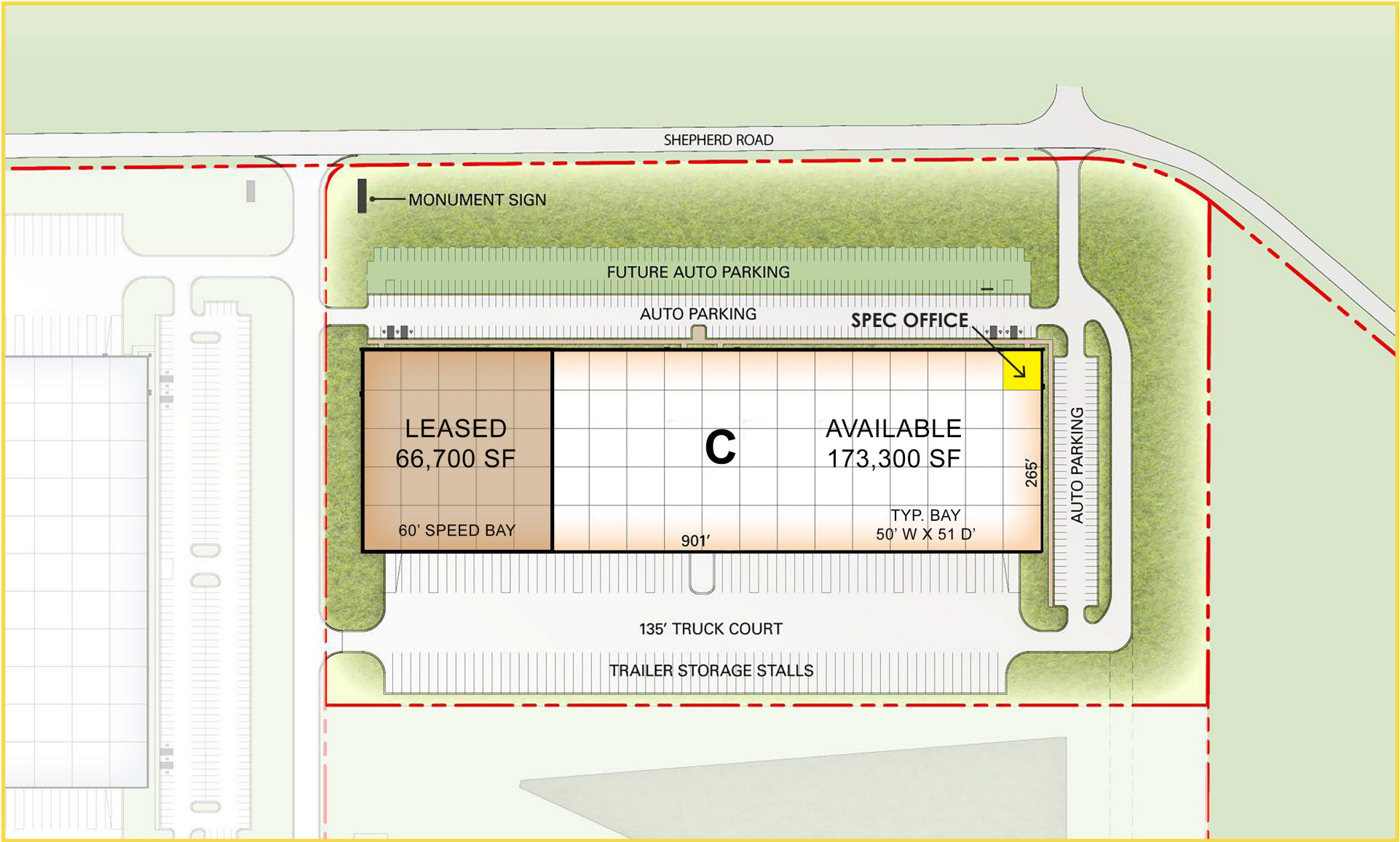
Building Size	± 240,000 +/- SF
Space Available	± 173,300 +/- SF
Land Area	19.40 Acres
Office Area	± 2,465 SF speculative office space under construction
Building Dimensions	265' x 901' (±)
Construction	Precast concrete panels and structural steel
Clear Height	32'
Column Spacing	50' W x 51' D typical; 50' x 60' at loading bays
Bay Size	13,250 +/- SF
Loading Dock Positions Available	54 (32 dock positions + 20 future dock positions)
Equipped Docks	32 dock positions with manual 9'x10' dock doors, 7'x8' mechanical levelers with 45,000 lb capacity, integral dock bumpers and dock seals
Drive In Doors	2 motorized drive in doors
Auto Parking	259 with potential for 175 additional stalls
Truck Court	135' total, 60' dock slab
Trailer Storage	67 trailer stalls
Roof	R-20, 60-mil TPO mechanically fastened roof system
Floor	7" unreinforced 4,000 psi concrete slab on 4" of compacted granular fill
Fire Suppression	ESFR
Heating	Gas-fired unit heaters
Lighting	High bay LED fixtures, 30 foot-candle
Windows	Aluminum frame 1" insulated glazing panel clerestory windows
Power	3,000A 480V 3-phase service to building
Zoning	M-1; Light Industrial District
Electric Service	Evergy
Water	City of Liberty
Gas	Spire
Sewer	City of Liberty
Ventilation	Exhaust fans and louvers, interlocked



SPEC OFFICE UNDER CONSTRUCTION



Building C Site Plan



Building D Preliminary Details

Building Size	± 676,000 SF
Land Area	± 66 Acres
Office Area	BTS
Building Dimensions	521' x 1,301' (±)
Construction	Precast concrete panels and structural steel
Clear Height	36' - 40'
Column Spacing	54' W x 50' D typical; 60' D at loading bays
Bay Size	28,915 +/- SF
Loading Dock Positions Available	114
Equipped Docks	68 - 35,000 lb mechanical levelers with integral bumpers, seals
Drive In Doors	4
Auto Parking	337
Truck Court	135' total, 60' dock slab
Trailer Storage	155 stalls; plus 272 future potential remote trailer stalls
Roof	45-mil mechanically fastened TPO (R-20)
Floor	7" unreinforced 4,000 psi concrete slab on 4" of compacted granular fill
Fire Suppression	ESFR
Heating	Gas-fired make-up air units
Lighting	High bay LED fixtures, 30 foot-candle
Windows	Aluminum frame 1" insulated glazing panel clerestory windows
Power	4,000A; 480V 3-phase service to building
Zoning	M-1; Light Industrial District
Electric Service	Evergy
Water	City of Liberty
Gas	Spire
Sewer	City of Liberty



Site/Building plan flexible and can be adjusted based on requirement.

Building D Preliminary Site Plan

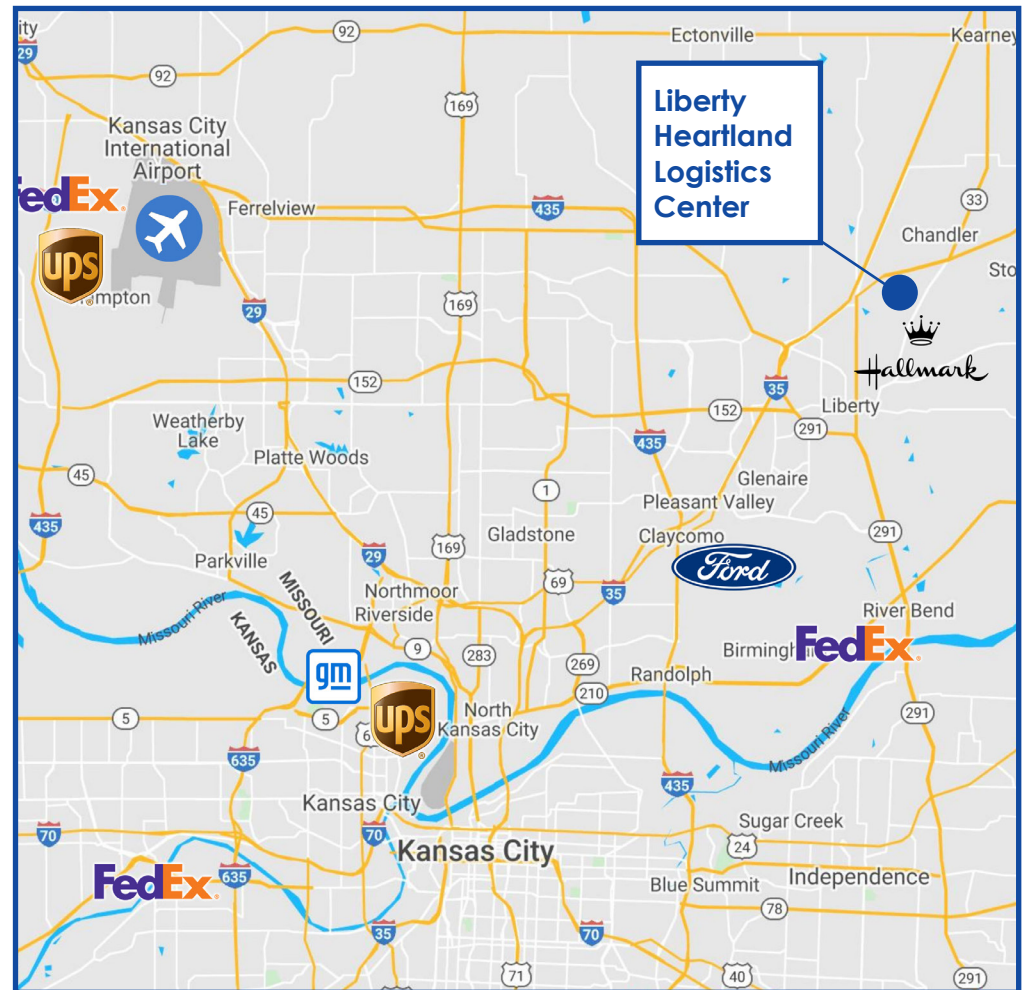
LIBERTY HEARTLAND LOGISTICS
CENTER



Site/Building plan flexible and can be adjusted based on requirement.

Liberty Heartland Logistics Center

- Master Planned For Over 2.3 Million Square Feet
- Speculative Construction
- Building Sizes Ranging From 239,008 To 680,000 Square Feet
- 90% Real Estate Tax Abatement For 10 Years
- Incentives Available From The State Of Missouri



Why Kansas City

Area Amenities

- #1 in USA in industrial transaction growth
- 15th largest industrial US market
- Ecommerce firms can start operations faster in KC than most cities
- 85% of US Population can be reached in 1-2 day truck drive
- FOREIGN TRADE ZONE (FTZ) more space than any other US city
- #2 Auto hub for manufacturing and assembly in USA according to Brookings Institution
- Workforce 150,000+ manufacturing and logistics employees in Kansas City

Transportation Infrastructure

- Largest rail center in US by tonnage
- On the largest inland waterway
- 4 intermodal parks
- 4 class 1 rail lines
- Located at the intersection of four major U.S. highways
- 30% more interstate miles per capita than any other city in the nation

Marketed By

Michael L. VanBuskirk

816-512-1010

mvanbuskirk@nzimmer.com

Mark C. Long

816-512-1011

mlong@nzimmer.com

John F. Hassler

816-268-4208

jhassler@nzimmer.com

Scott E. Bluhm

816-268-4224

sbluhm@nzimmer.com

The information contained herein has been obtained from sources deemed reliable but has not been verified and no guarantee, warranty or representation, either express or implied, is made with respect to such information. Terms of sale or lease and availability are subject to change or withdrawal without notice.



OPUS[®]
THE OPUS GROUP

NEWMARK
ZIMMER