

# Available for Lease or Sale

22,000 SF to 113,915 SF

11701 N 132<sup>nd</sup> Avenue,  
Surprise, AZ 85379

Move-In Ready

Excess Outdoor Storage  
and Trailer Parking

**HORIZON**  
At Skyway Commons



 CAPITAL BAY  
PARTNERS

 FOUNDATION  
CAPITAL  
PARTNERS

 JLL

# SITE PLAN

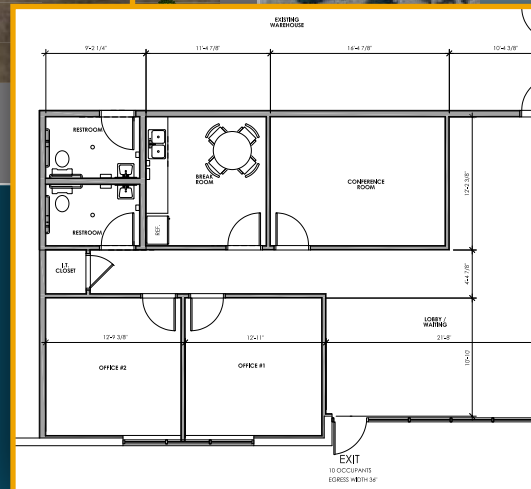


## Building Features

- $\pm 135,896$  SF building
- Existing spec office: 1,397 SF
- Outside storage capable
- 32' clear height
- 54' x 54' column spacing with 60' speed bay
- 16 dock high doors (9' x 9')
- 8 drive-in doors (12' x 14')
- EVAP Cooling in the warehouse
- 3000 amps (APS)
- R-38 roof insulation
- 7" unreinforced slab
- Full concrete truck court (4" pavement, PCC concrete ramps)
- 144 parking stalls 30 trailer drops
- ESFR fire sprinklers
- BP zoning
- Fully secured truck court

## Improvements Completed - Ready for Occupancy

- Additional 1,800 SF spec office
- LED lighting
- 3 pit levelers
- Larger building address signage for increased visibility





# CORPORATE NEIGHBORS

## HORIZON At Skyway Commons

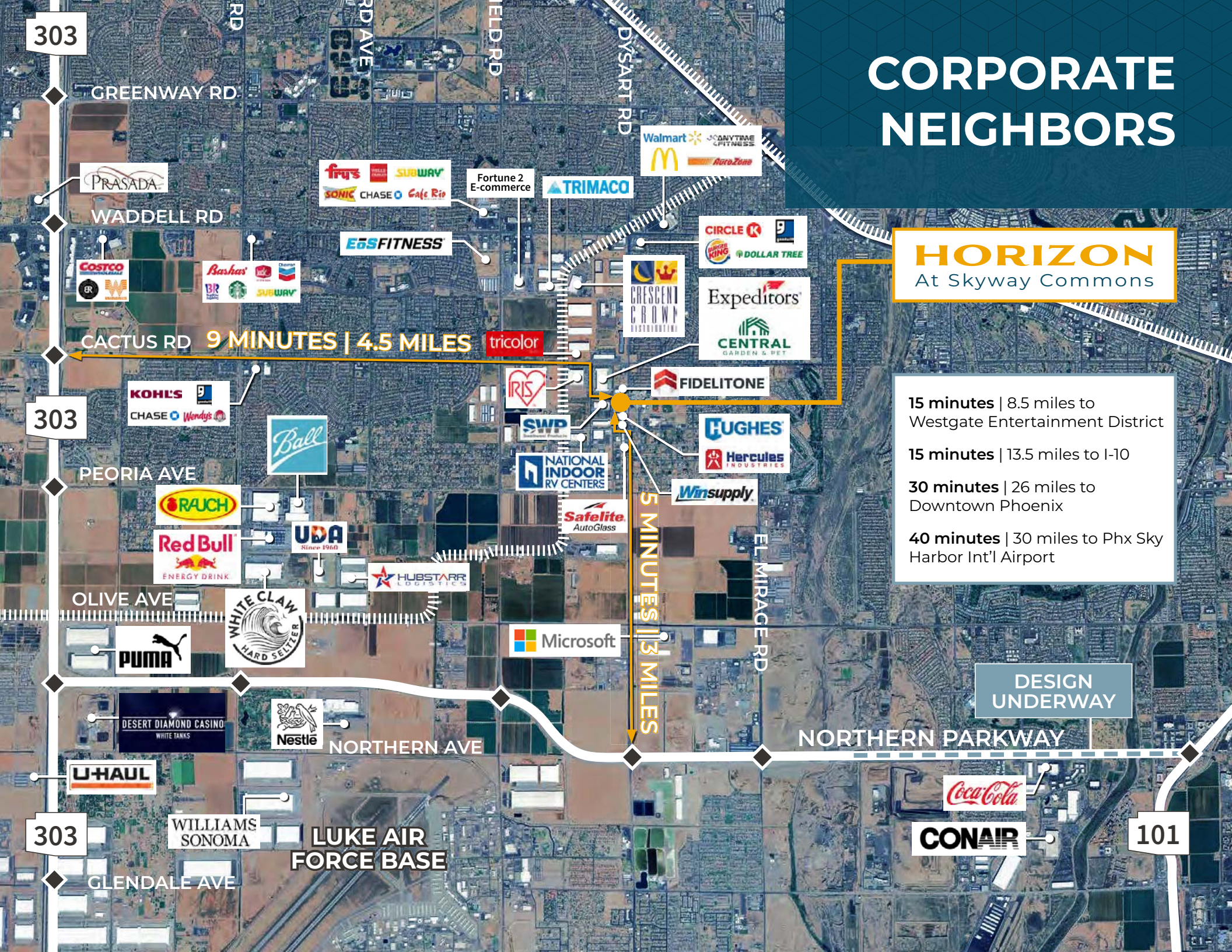
15 minutes | 8.5 miles to  
Westgate Entertainment District

15 minutes | 13.5 miles to I-10

30 minutes | 26 miles to  
Downtown Phoenix

40 minutes | 30 miles to Phx Sky  
Harbor Int'l Airport

DESIGN  
UNDERWAY



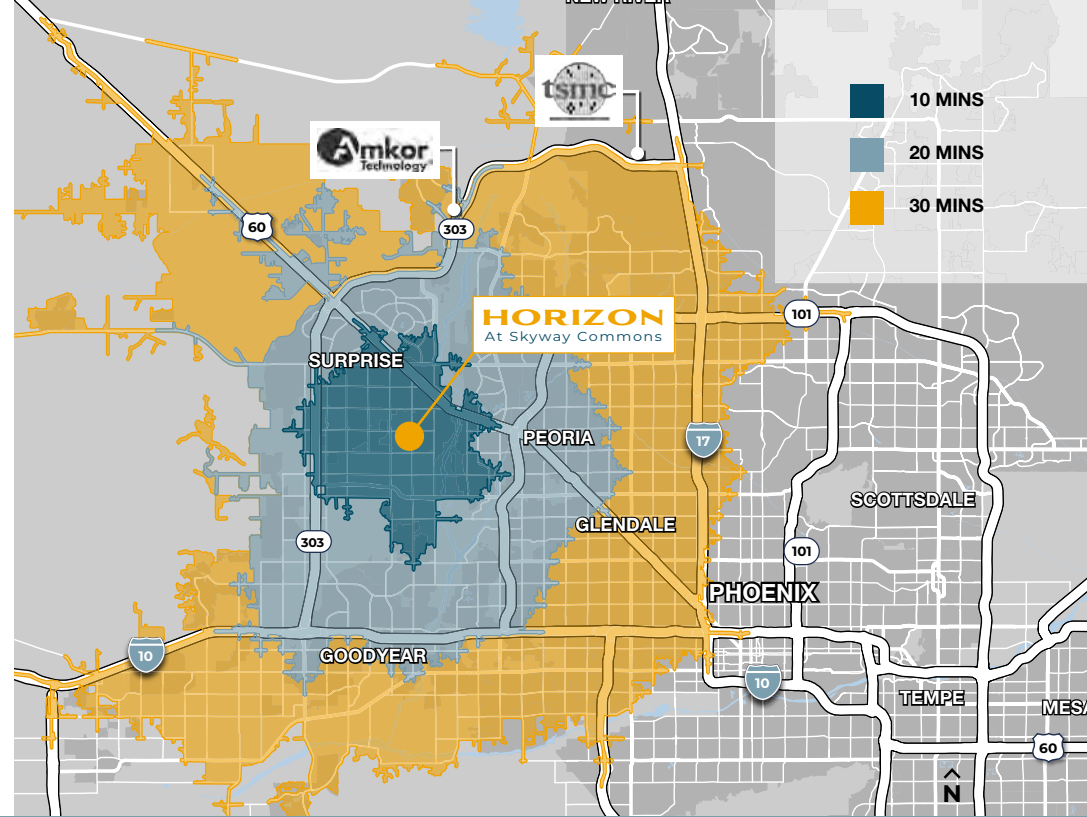
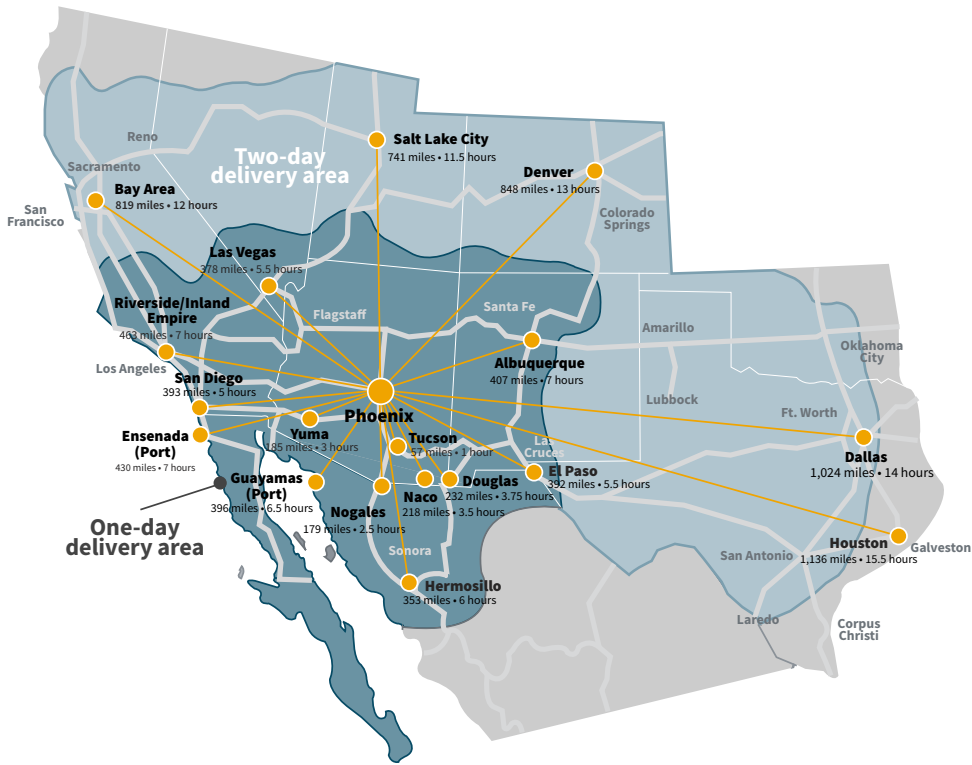
303

303

303

101





## DEMOGRAPHICS

POPULATION	10 MINS	20 MINS	30 MINS
2029 Population	128,831	619,397	1,668,820
2024 Population	125,090	577,193	1,604,041
5 Year Growth	3.0%	7.3%	4.0%

INCOME	10 MINS	20 MINS	30 MINS
2024 Median Home Value	\$412,422	\$426,454	\$422,098
2024 Median HH Income	\$84,087	\$81,622	\$81,362
2022 Median Year Built	2003	1998	1993

## LABOR FACTS

	10 MINS	20 MINS	30 MINS
2024 Employed Civilian Population (Age 16+, Place of Residence)	61,090	252,687	760,580
2024 Industry Employment (Place of Work)	21,849	144,828	441,845
2024 Manufacturing Employment (Place of Work)	4,014	16,965	55,536
2024 Manufacturing Businesses	41	206	994
2024 Transportation Employment (Place of Work)	4,673	18,054	52,232
2024 Transportation Businesses	37	142	580

## FOR LEASING INFORMATION:

### HAGEN HYATT

Senior Vice President  
T+1 602 282 6275  
M+1 520 904 1589  
hagen.hyatt@jll.com

### ANTHONY LYDON, SIOR

Vice Chairman  
T+1 602 282 6268  
M+1 602 469 1843  
aj.lydon@jll.com

### RILEY GILBERT, SIOR

Vice Chairman  
T+1 602 282 6271  
M+1 480 628 5590  
riley.gilbert@jll.com

### NICOLE MARSHALL

Associate  
T+1 602 282 6300  
M+1 951 723 0943  
nicole.marshall@jll.com



Although information has been obtained from sources deemed reliable, neither Owner nor JLL makes any guarantees, warranties or representations, express or implied, as to the completeness or accuracy as to the information contained herein. Any projections, opinions, assumptions or estimates used are for example only. There may be differences between projected and actual results, and those differences may be material. The Property may be withdrawn without notice. Neither Owner nor JLL accepts any liability for any loss or damage suffered by any party resulting from reliance on this information. If the recipient of this information has signed a confidentiality agreement regarding this matter, this information is subject to the terms of that agreement. © 2024 Jones Lang LaSalle IP, Inc. All rights reserved.