

FOR SALE OR LEASE



1020 2nd Avenue
Columbia, SC 29209

±134,474 SF Manufacturing Facility for Sale or Lease

- +/- 104,000 SF Main
- +/- 31,000 SF Additional
- 6.78 Acre Site
- 14 Dock High Doors & 8 Drive-In Doors
- Clear Heights: 12' - 25'
- Fully Fenced
- Additional yard space
- Parking: 88 Spaces
- Electricity:
 - - 3000 AMPs 480 Main Building
 - - 2000 AMPs 240 Small Building
 - - 3 Phase Power
- Zoning: M-1 Light Industrial

Lease Rate: \$5.00/NNN

Sale Price: \$6,500,000 (\$48.15/SF)



CONTACT:

JAMES ROGERS | james.rogers@wilsonkibler.com | 803.255.8621

JULIAN WILSON | julian.wilson@wilsonkibler.com | 803.414.4434

Wilson Kibler
COMMERCIAL REAL ESTATE

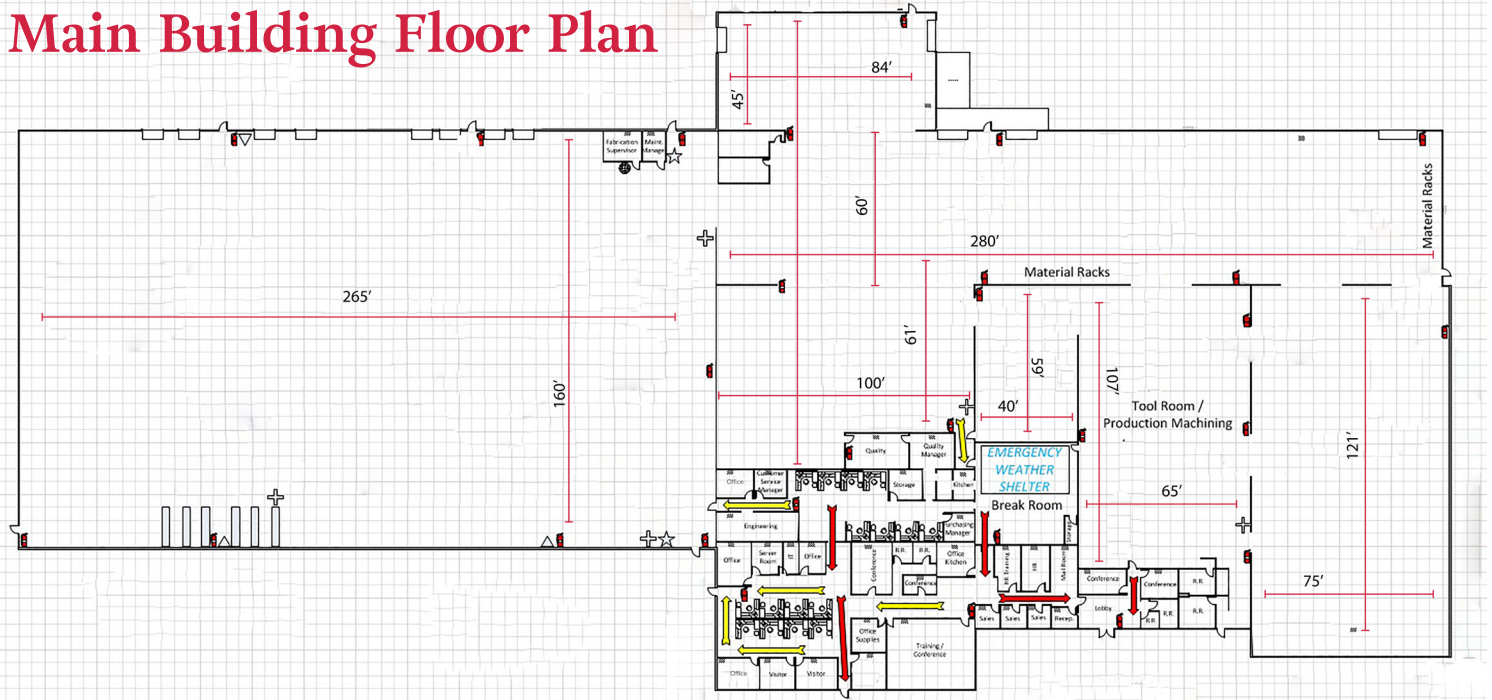


The information contained herein has been obtained from sources we believe to be reliable; however, Wilson Kibler has not conducted any investigation regarding these matters and makes no warranty or representation whatsoever regarding the accuracy or completeness of the information provided.

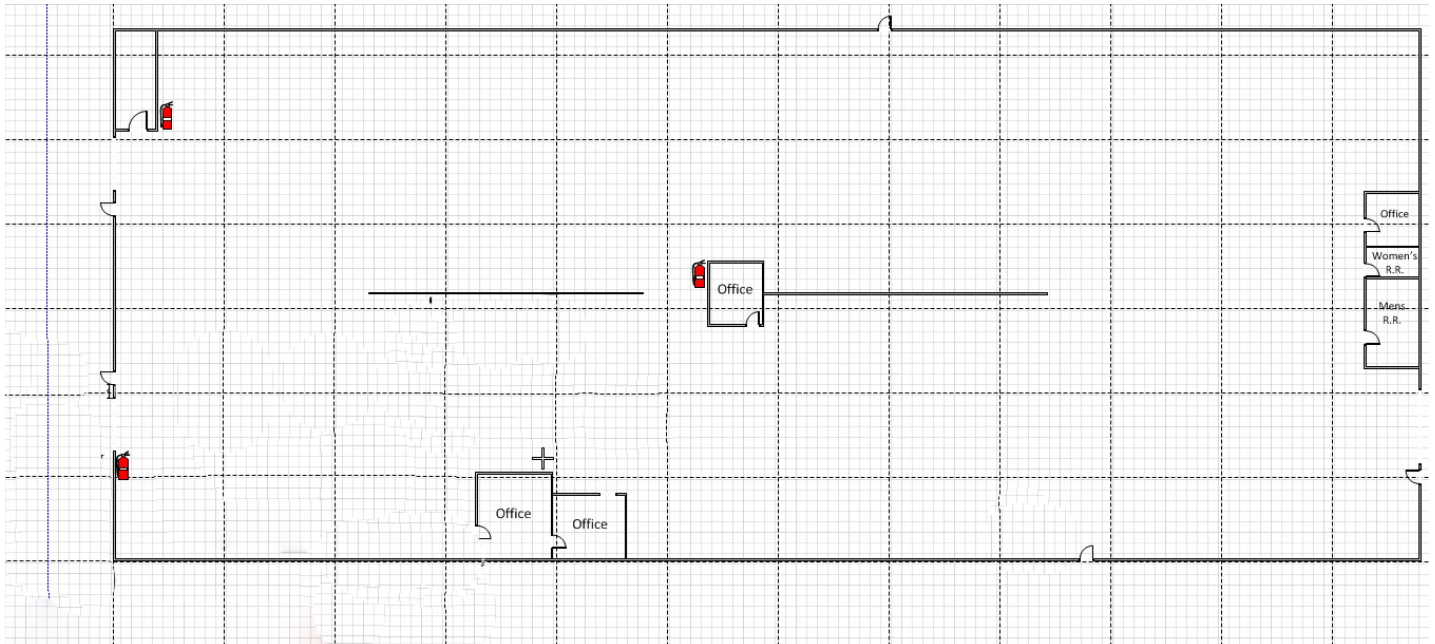


1020 2nd Avenue
Columbia, SC 29209

Main Building Floor Plan



Secondary Building Floor Plan



CONTACT:

JAMES ROGERS | james.rogers@wilsonkibler.com | 803.255.8621
JULIAN WILSON | julian.wilson@wilsonkibler.com | 803.414.4434

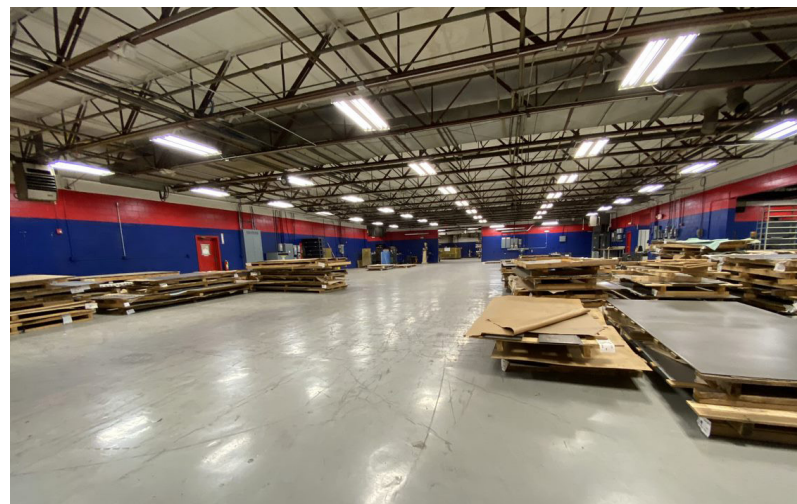
Wilson Kibler
COMMERCIAL REAL ESTATE



The information contained herein has been obtained from sources we believe to be reliable; however, Wilson Kibler has not conducted any investigation regarding these matters and makes no warranty or representation whatsoever regarding the accuracy or completeness of the information provided.



1020 2nd Avenue
Columbia, SC 29209



CONTACT:

JAMES ROGERS | james.rogers@wilsonkibler.com | 803.255.8621

JULIAN WILSON | julian.wilson@wilsonkibler.com | 803.414.4434

Wilson Kibler
COMMERCIAL REAL ESTATE



The information contained herein has been obtained from sources we believe to be reliable; however, Wilson Kibler has not conducted any investigation regarding these matters and makes no warranty or representation whatsoever regarding the accuracy or completeness of the information provided.