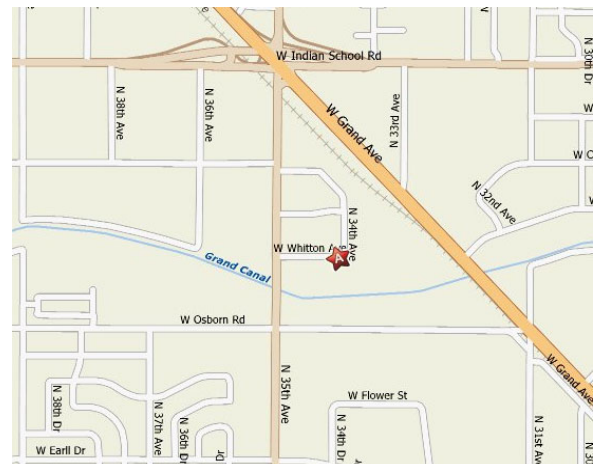


AVAILABLE

3409 W. Whitton Avenue 6,000 Sq. Ft.

Features:

- Located just min. from I-10 & I-17 freeways
- 3,000 sq. ft. a/c office area (Showroom, bullpen, 6 offices, breakroom, 2 restrooms)
- 3,000 sq. ft. +/- evap. cooled warehouse
- 16' Minimum clear height
- Two (2) 12' x 12' grade doors
- Concrete tilt construction
- Excellent accessibility
- 200 amps, 120/208 volt, 3 phase power
- Building Signage
- **Competitive Gross Rental Rates**



5100 N. 40th Street
Phoenix, Arizona 85018
(602) 438-8000
(602) 438-7940 fax
www.azindprop.com

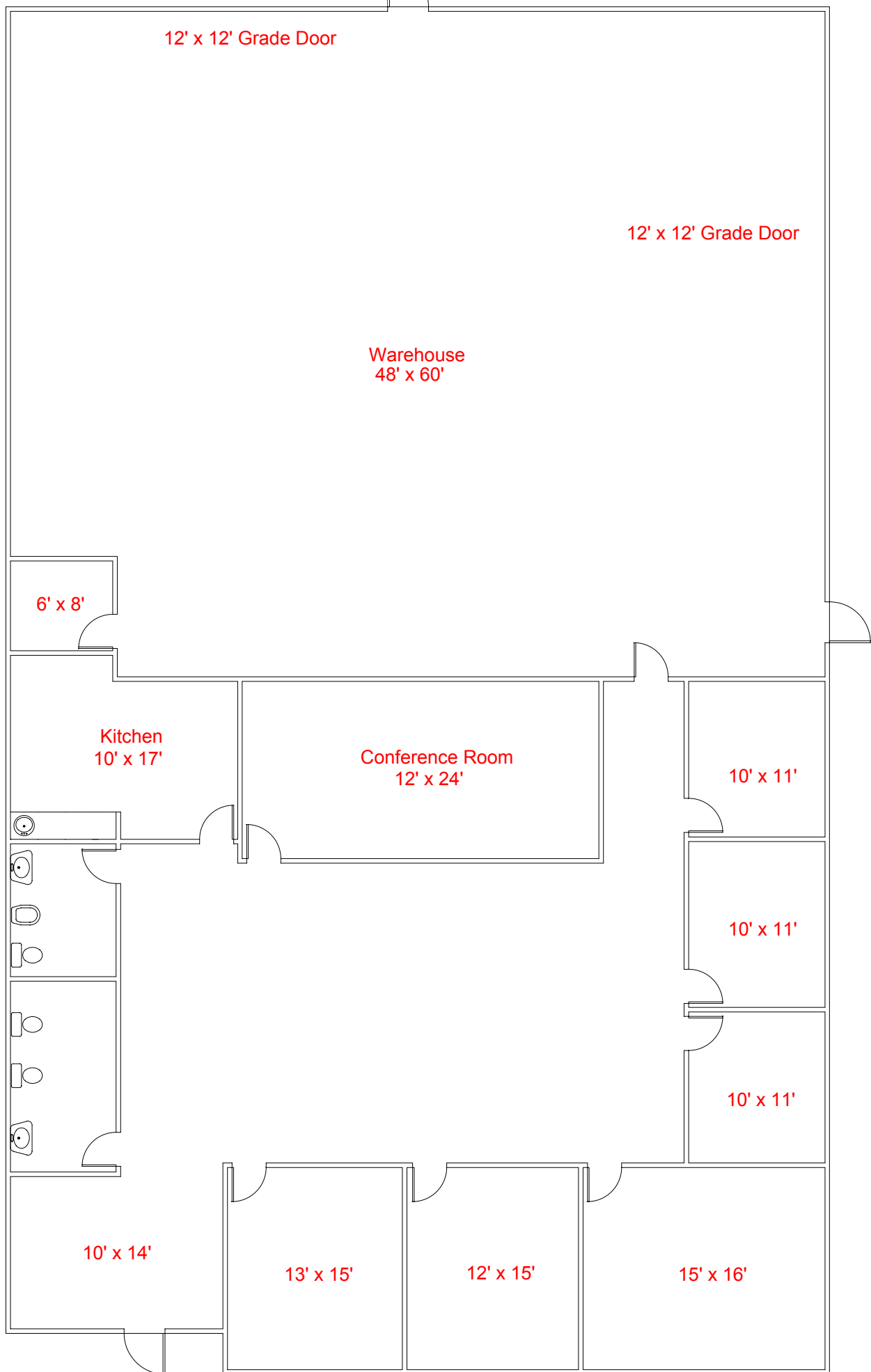
For More Information Contact:

Randy S. Warner
(602) 438-8000

randy@azindprop.com

No CAM's

The information contained herein has been obtained from sources we deem reliable. However, no warranties or representations, expressed or implied, are made as to the accuracy of any information contained herein, and the information is subject to errors and omissions. This information is also subject to change of price, rental or other conditions, withdrawal without notice, and to any special listing conditions imposed by our principals.



Drawing Not To Scale

3409 W. Whitton Avenue
Approx. 6,000 sq. ft.