

FOR SALE

9120 PREMIER ROW | DALLAS, TEXAS



THE DETAILS

ADDRESS

9120 Premier Row
Dallas, TX 75247
Brookhollow Industrial District

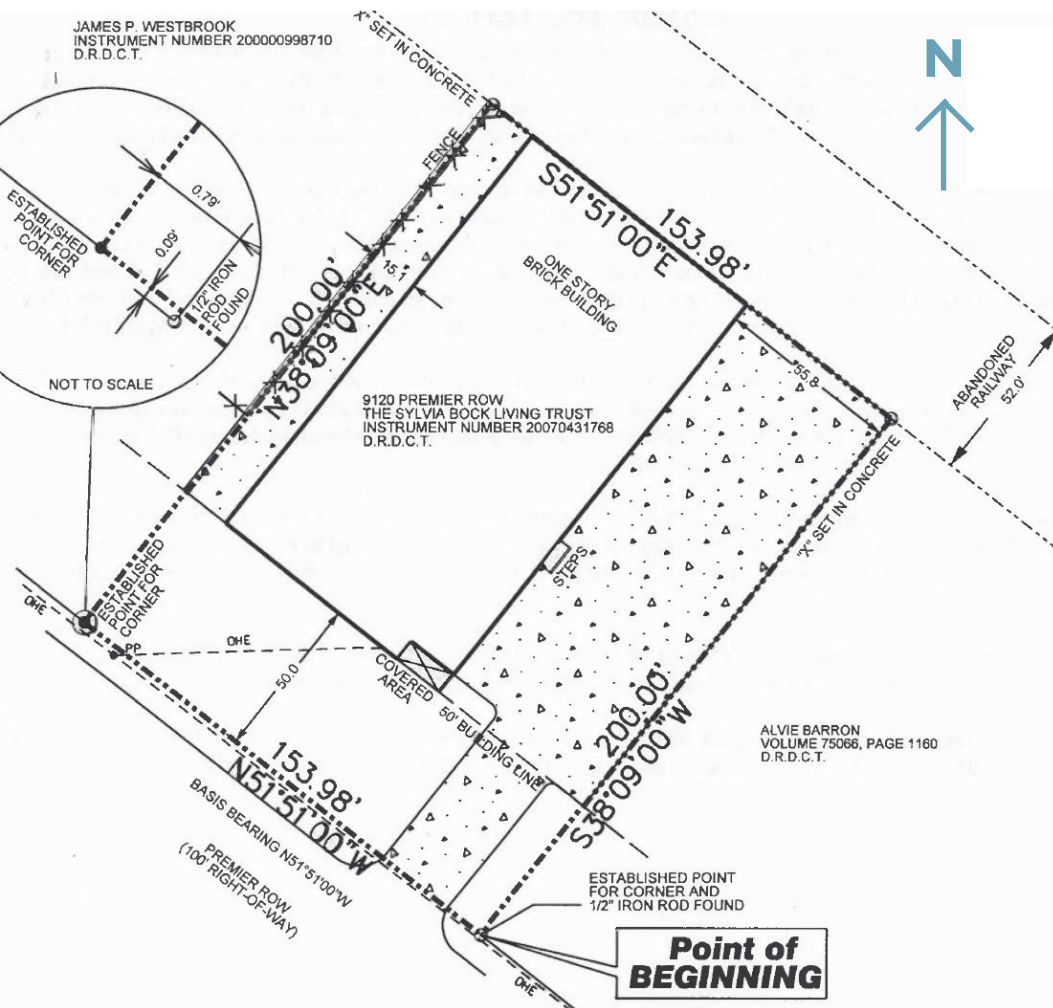
AVAILABLE

12,450 SF Office/Warehouse
situated on 34,805 SF of Land
Office: Approximately 1,000 SF

AMENITIES

Two (2) Dock High Loading
Doors
Building Dimensions are
approximately 83' x 150'
14' Clear Height
3-Phase Electrical





AVAILABLE SPACE



34,805 SF OF LAND



12,450 SF OF OFFICE /
WAREHOUSE SPACE



1,000 SF OF
OFFICE SPACE



IRVING

DALLAS

14 minutes from **DFW Airport**
14 minutes from **Design District**
15 minutes from **Dallas Love Field**
21 minutes from **Downtown Dallas**
24 minutes from **Uptown**