

# NORTH PORT 41 COMMERCIAL LAND

12580 S Tamiami Trail | North Port, FL 34287

General Commercial Land For Sale



**LQ Commercial**  
REAL ESTATE SERVICES

**CONNECT**



**\$2,000,000**  
PRICE

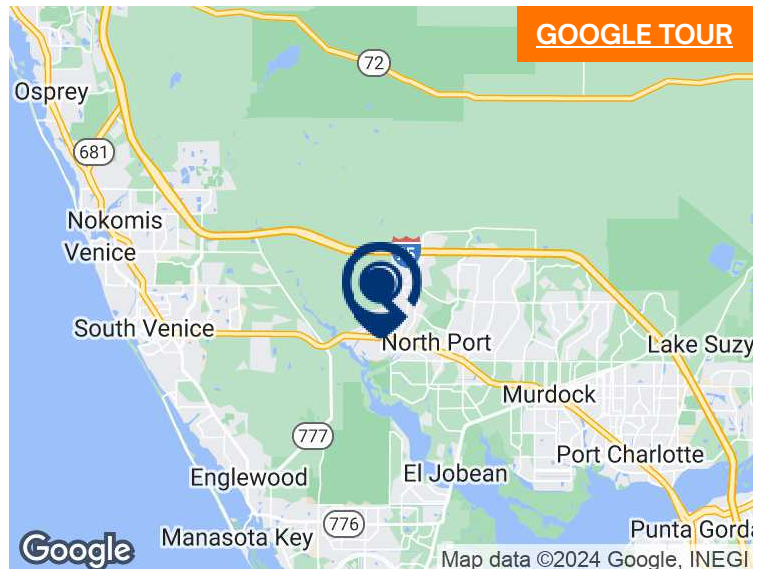


**3.0±**  
AC



**ZONED CG**  
COMMERCIAL GENERAL

- Three acres for sale along dominant US Highway 41 (Sarasota County).
- Signalized hard corner with excellent visibility and strong access.
- Zoned for general commercial development.
- Over 2.5% recent population growth, with 2.3% more by 2029.
- Minutes from retail hubs including Cocoplum Village Shops and Murdock Circle.
- Tax Map: <https://tinyurl.com/u4kj5euk>



[PROPERTIES.LQCRE.COM/RT-NORTH-PORT](https://PROPERTIES.LQCRE.COM/RT-NORTH-PORT)



**5-MILE POPULATION**  
**57,330**



**5-MILE INCOME**  
**\$97,528**



**5-MILE EMPLOYEES**  
**9,532**



5601 Mariner St #220  
Tampa, FL 33609  
**LQCRE.COM**

**Paul Rutledge**  
Senior Broker Associate  
D: 813.999.1942  
C: 941.228.2198  
**PRUTLEDGE@LQCRE.COM**

Information obtained from owner(s) or other sources deemed reliable. We have no reason to doubt its accuracy, but cannot guarantee it. All properties subject to change or withdrawal without notice.



# NORTH PORT 41 COMMERCIAL LAND

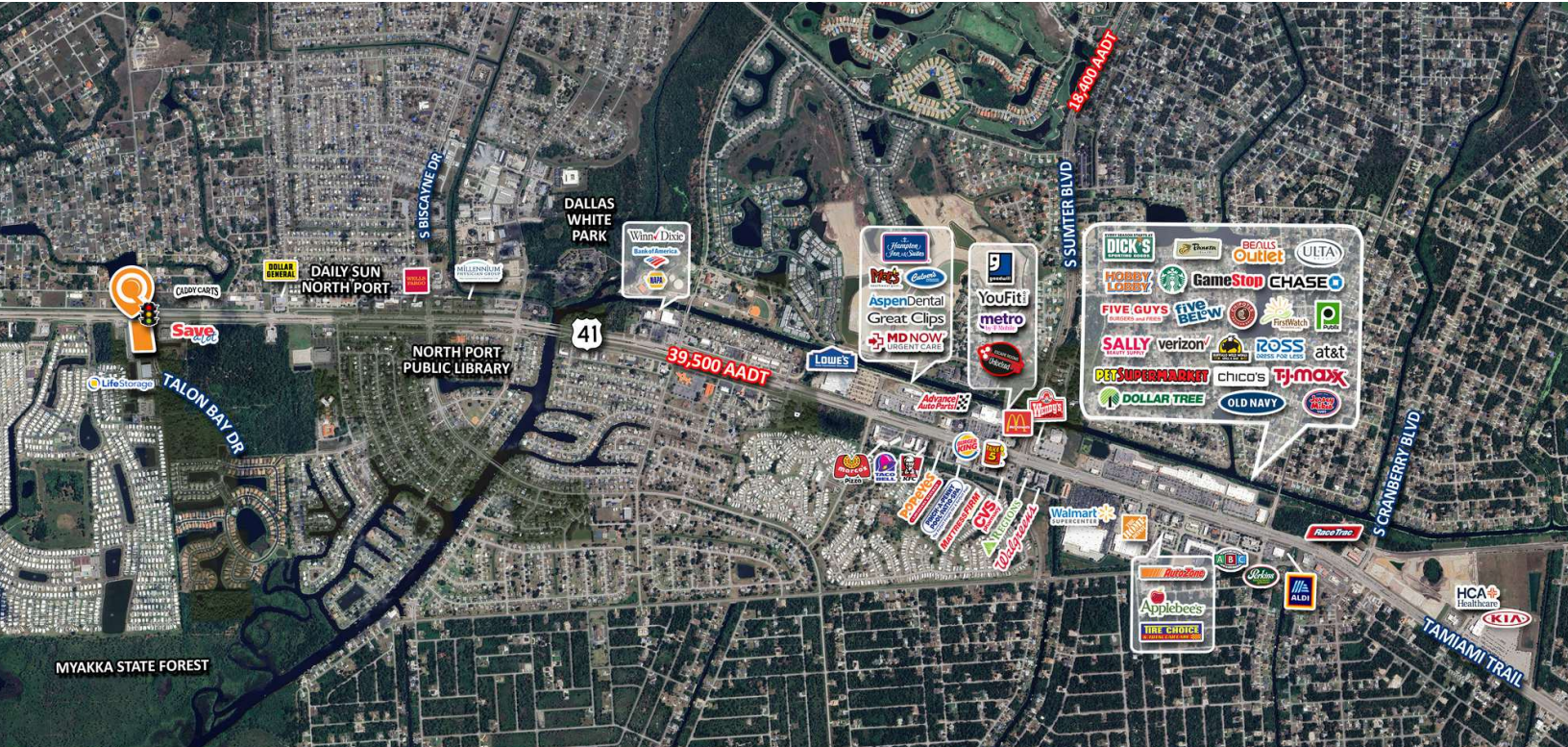
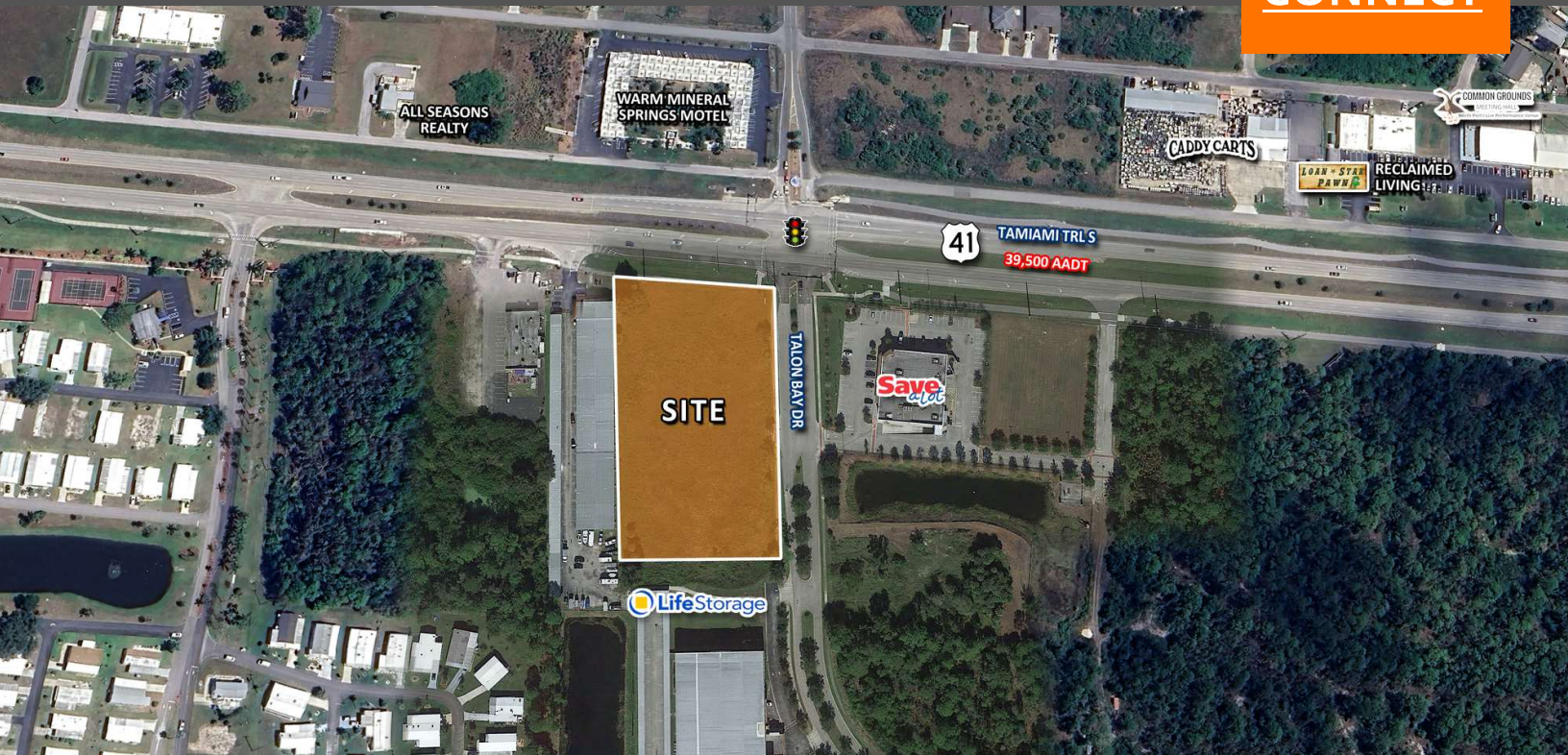
12580 S Tamiami Trail | North Port, FL 34287

General Commercial Land For Sale



**LQ Commercial**  
REAL ESTATE SERVICES

**CONNECT**



**LQ Commercial**  
REAL ESTATE SERVICES

5601 Mariner St #220

Tampa, FL 33609

**LQCRE.COM**

**Paul Rutledge**

Senior Broker Associate

D: 813.999.1942

C: 941.228.2198

**PRUTLEDGE@LQCRE.COM**

Information obtained from owner(s) or other sources deemed reliable. We have no reason to doubt its accuracy, but cannot guarantee it. All properties subject to change or withdrawal without notice.