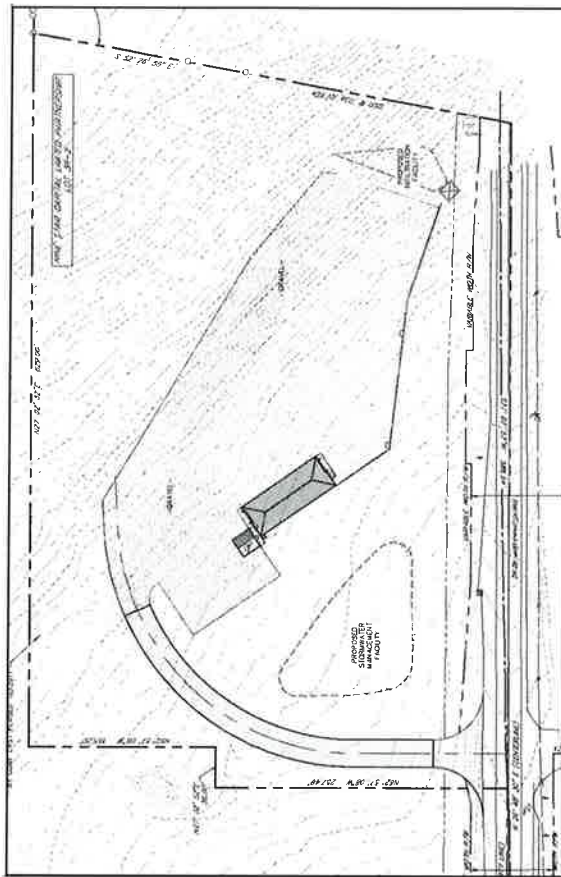
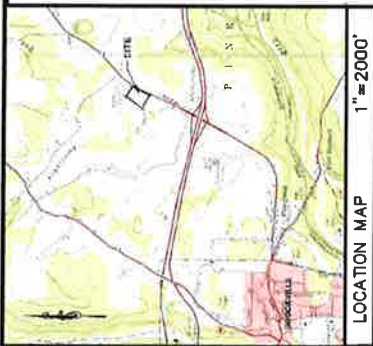


CONSTRUCTION PLAN FOR NINE STAR CAPITAL TRUCK GARAGE

PINE CREEK TOWNSHIP
JEFFERSON COUNTY, PENNSYLVANIA



PROPOSED CONDITIONS

- EXISTING UTILITIES SHALL BE MAINTAINED AND PROTECTED. ANY UTILITIES THAT ARE FOUND TO BE DAMAGED OR DISPLACED SHALL BE REPAIRED OR REPLACED TO ORIGINAL CONDITIONS. ALL UTILITIES SHALL BE PROTECTED BY A MINIMUM OF 18 INCHES OF GRANULAR FILL.
- ALL EXISTING UTILITIES SHALL BE MAINTAINED AND PROTECTED. ANY UTILITIES THAT ARE FOUND TO BE DAMAGED OR DISPLACED SHALL BE REPAIRED OR REPLACED TO ORIGINAL CONDITIONS. ALL UTILITIES SHALL BE PROTECTED BY A MINIMUM OF 18 INCHES OF GRANULAR FILL.
- ALL EXISTING UTILITIES SHALL BE MAINTAINED AND PROTECTED. ANY UTILITIES THAT ARE FOUND TO BE DAMAGED OR DISPLACED SHALL BE REPAIRED OR REPLACED TO ORIGINAL CONDITIONS. ALL UTILITIES SHALL BE PROTECTED BY A MINIMUM OF 18 INCHES OF GRANULAR FILL.
- ALL EXISTING UTILITIES SHALL BE MAINTAINED AND PROTECTED. ANY UTILITIES THAT ARE FOUND TO BE DAMAGED OR DISPLACED SHALL BE REPAIRED OR REPLACED TO ORIGINAL CONDITIONS. ALL UTILITIES SHALL BE PROTECTED BY A MINIMUM OF 18 INCHES OF GRANULAR FILL.

TENTATIVE CONSTRUCTION SCHEDULE

ACTIVITY	START DATE	END DATE
PERMITS	08/01/2017	08/31/2017
DEMOLITION	09/01/2017	09/30/2017
FOUNDATION	10/01/2017	10/31/2017
FRAMING	11/01/2017	11/30/2017
MECHANICAL/ELECTRICAL/PLUMBING	12/01/2017	12/31/2017
FINISHES	01/01/2018	01/31/2018
LANDSCAPE	02/01/2018	02/28/2018
FINAL INSPECTION	03/01/2018	03/31/2018

RECEIVING WATERHEAD

UNIT TO LITTLE MILL CREEK (RD-647)

SHEET INDEX:

SHEET NO.	DESCRIPTION
SHEET 1	COVER
SHEET 2	EXISTING CONDITIONS / DEMOLITION
SHEET 3	PROFILES
SHEET 4	PROFILES
SHEET 5	PROFILES
SHEET 6	PROFILES
SHEET 7	DETAILS
SHEET 8	DETAILS
SHEET 9	DETAILS
SHEET 10	DETAILS
SHEET 11	DETAILS
SHEET 12	DETAILS
SHEET 13	DETAILS

COVER

FOR
CONSTRUCTION PLAN
NINE STAR CAPITAL TRUCK GARAGE

HAWBAKER ENGINEERS

1952 Venable Road, Suite 201, Shick County, Pa 16803
717-300-291-8590 hawbakering@hawbak.com

DATE: 08/01/2017

BY: [Signature]

1 OF 12

PROJECT NARRATIVE:
THE NINE STAR CAPITAL TRUCK GARAGE PROJECT IS SITED ON A 10.5 ACRES PARCEL LOCATED IN THE TOWNSHIP OF PINE CREEK, COUNTY OF JEFFERSON, PENNSYLVANIA. THE PROJECT WILL CONSIST OF THE CONSTRUCTION OF A TRUCK GARAGE, OFFICE BUILDING, AND PARKING LOT. THE PROJECT WILL BE DEVELOPED IN ACCORDANCE WITH THE ZONING ORDINANCES OF THE TOWNSHIP OF PINE CREEK, COUNTY OF JEFFERSON, PENNSYLVANIA. THE PROJECT WILL BE DEVELOPED IN ACCORDANCE WITH THE ZONING ORDINANCES OF THE TOWNSHIP OF PINE CREEK, COUNTY OF JEFFERSON, PENNSYLVANIA. THE PROJECT WILL BE DEVELOPED IN ACCORDANCE WITH THE ZONING ORDINANCES OF THE TOWNSHIP OF PINE CREEK, COUNTY OF JEFFERSON, PENNSYLVANIA.

SITE DATA:
PROJECT NAME: NINE STAR CAPITAL TRUCK GARAGE
OWNER: NINE STAR CAPITAL TRUCK GARAGE
ADDRESS: 1952 VENABLE ROAD, SUITE 201, SHICK COUNTY, PA 16803
CONTACT: [Contact Information]

GENERAL NOTES:
1. ALL CONSTRUCTION SHALL BE IN ACCORDANCE WITH THE ZONING ORDINANCES OF THE TOWNSHIP OF PINE CREEK, COUNTY OF JEFFERSON, PENNSYLVANIA.
2. ALL CONSTRUCTION SHALL BE IN ACCORDANCE WITH THE ZONING ORDINANCES OF THE TOWNSHIP OF PINE CREEK, COUNTY OF JEFFERSON, PENNSYLVANIA.
3. ALL CONSTRUCTION SHALL BE IN ACCORDANCE WITH THE ZONING ORDINANCES OF THE TOWNSHIP OF PINE CREEK, COUNTY OF JEFFERSON, PENNSYLVANIA.
4. ALL CONSTRUCTION SHALL BE IN ACCORDANCE WITH THE ZONING ORDINANCES OF THE TOWNSHIP OF PINE CREEK, COUNTY OF JEFFERSON, PENNSYLVANIA.
5. ALL CONSTRUCTION SHALL BE IN ACCORDANCE WITH THE ZONING ORDINANCES OF THE TOWNSHIP OF PINE CREEK, COUNTY OF JEFFERSON, PENNSYLVANIA.

PROJECT NARRATIVE:
THE NINE STAR CAPITAL TRUCK GARAGE PROJECT IS SITED ON A 10.5 ACRES PARCEL LOCATED IN THE TOWNSHIP OF PINE CREEK, COUNTY OF JEFFERSON, PENNSYLVANIA. THE PROJECT WILL CONSIST OF THE CONSTRUCTION OF A TRUCK GARAGE, OFFICE BUILDING, AND PARKING LOT. THE PROJECT WILL BE DEVELOPED IN ACCORDANCE WITH THE ZONING ORDINANCES OF THE TOWNSHIP OF PINE CREEK, COUNTY OF JEFFERSON, PENNSYLVANIA. THE PROJECT WILL BE DEVELOPED IN ACCORDANCE WITH THE ZONING ORDINANCES OF THE TOWNSHIP OF PINE CREEK, COUNTY OF JEFFERSON, PENNSYLVANIA. THE PROJECT WILL BE DEVELOPED IN ACCORDANCE WITH THE ZONING ORDINANCES OF THE TOWNSHIP OF PINE CREEK, COUNTY OF JEFFERSON, PENNSYLVANIA.

SITE DATA:
PROJECT NAME: NINE STAR CAPITAL TRUCK GARAGE
OWNER: NINE STAR CAPITAL TRUCK GARAGE
ADDRESS: 1952 VENABLE ROAD, SUITE 201, SHICK COUNTY, PA 16803
CONTACT: [Contact Information]

GENERAL NOTES:
1. ALL CONSTRUCTION SHALL BE IN ACCORDANCE WITH THE ZONING ORDINANCES OF THE TOWNSHIP OF PINE CREEK, COUNTY OF JEFFERSON, PENNSYLVANIA.
2. ALL CONSTRUCTION SHALL BE IN ACCORDANCE WITH THE ZONING ORDINANCES OF THE TOWNSHIP OF PINE CREEK, COUNTY OF JEFFERSON, PENNSYLVANIA.
3. ALL CONSTRUCTION SHALL BE IN ACCORDANCE WITH THE ZONING ORDINANCES OF THE TOWNSHIP OF PINE CREEK, COUNTY OF JEFFERSON, PENNSYLVANIA.
4. ALL CONSTRUCTION SHALL BE IN ACCORDANCE WITH THE ZONING ORDINANCES OF THE TOWNSHIP OF PINE CREEK, COUNTY OF JEFFERSON, PENNSYLVANIA.
5. ALL CONSTRUCTION SHALL BE IN ACCORDANCE WITH THE ZONING ORDINANCES OF THE TOWNSHIP OF PINE CREEK, COUNTY OF JEFFERSON, PENNSYLVANIA.

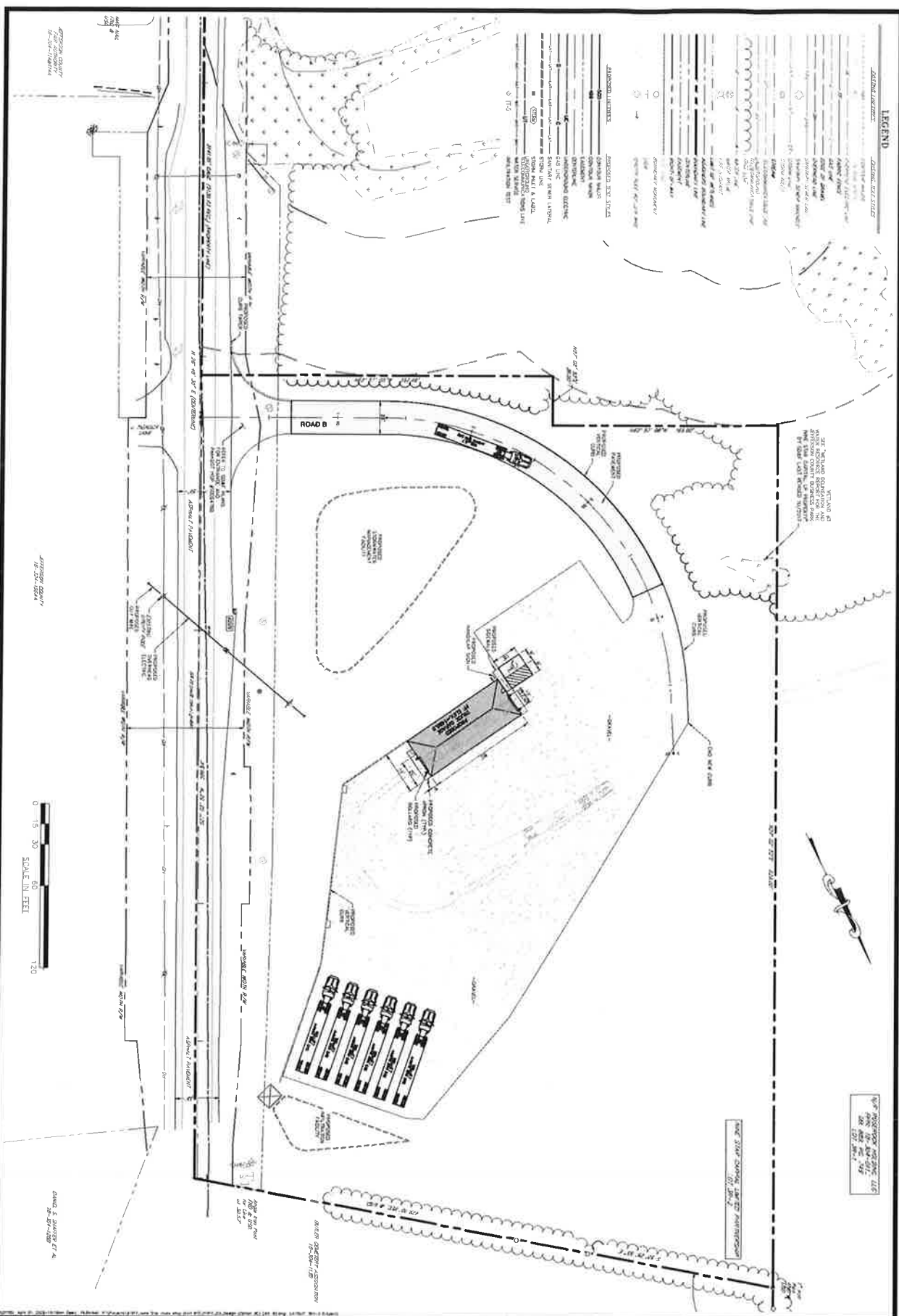
HAWBAKER ENGINEERS

1952 Venable Road, Suite 201, Shick County, Pa 16803
717-300-291-8590 hawbakering@hawbak.com

DATE: 08/01/2017

BY: [Signature]

1 OF 12



HAWBAKER ENGINEERING
 1952 Wardle Road, Suite 201 State College, Pa 16803
 1-800-364-8560 hawbakereengineering.com

LAYOUT

CONSTRUCTION PLAN FOR NINE STAR CAPITAL TRUCK GARAGE

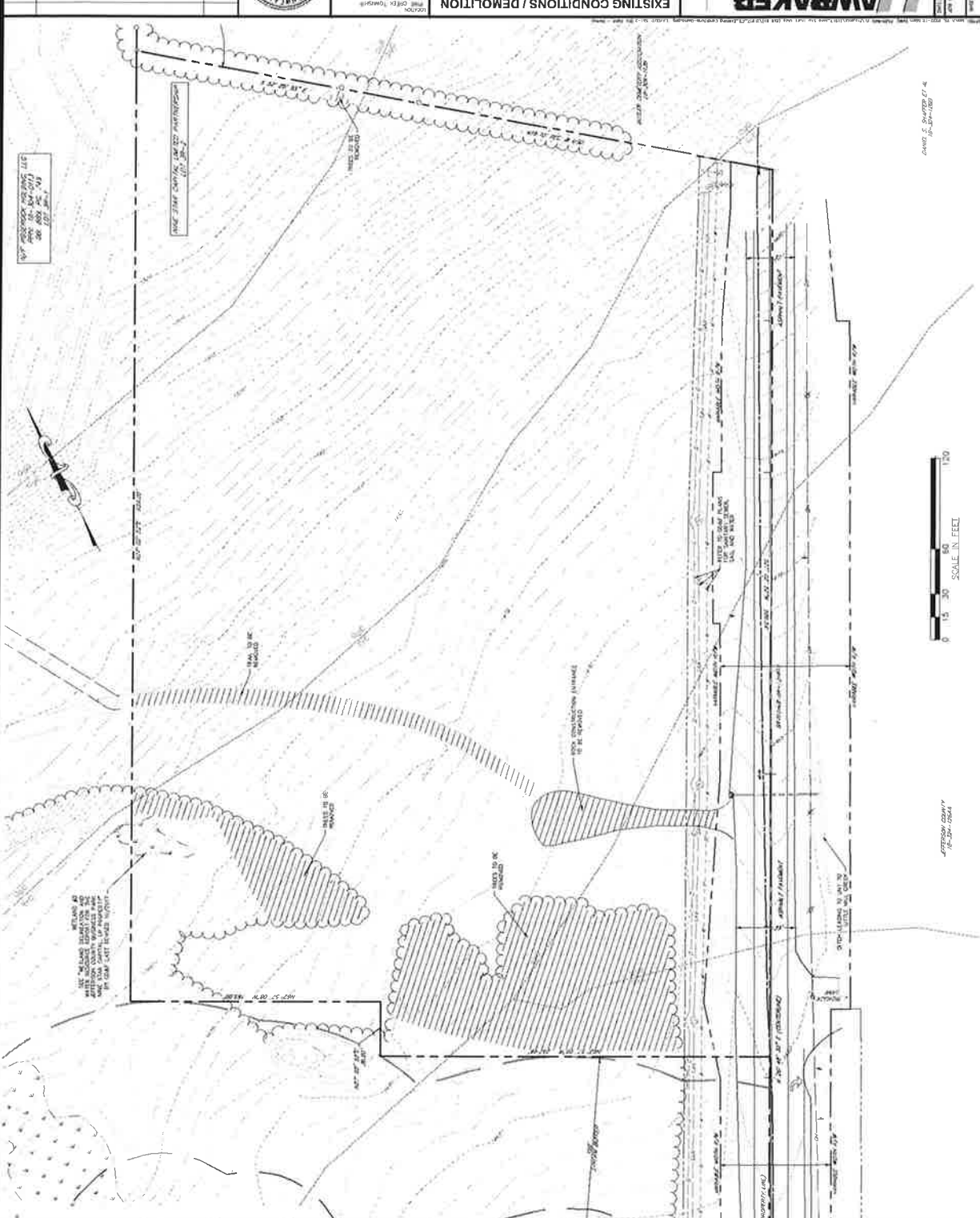
DATE	12/24/22
BY	REVISED
CHKD	

PROJECT NO: 2022-001
 DATE: 12/24/22
 SCALE: 1" = 30'
 SHEET NO: 3 OF 12

DATE	12/24/22	REVISION	REV BY

LEGEND

EXISTING UTILITIES	
1" = 10' 0"	CONCRETE PIPE 36" DIA.
2" = 10' 0"	CONCRETE PIPE 18" DIA.
3" = 10' 0"	CONCRETE PIPE 12" DIA.
4" = 10' 0"	CONCRETE PIPE 6" DIA.
5" = 10' 0"	STEEL PIPE 12" DIA.
6" = 10' 0"	STEEL PIPE 6" DIA.
7" = 10' 0"	STEEL PIPE 4" DIA.
8" = 10' 0"	STEEL PIPE 2" DIA.
9" = 10' 0"	STEEL PIPE 1 1/2" DIA.
10" = 10' 0"	STEEL PIPE 1" DIA.
11" = 10' 0"	STEEL PIPE 3/4" DIA.
12" = 10' 0"	STEEL PIPE 1/2" DIA.
13" = 10' 0"	STEEL PIPE 3/8" DIA.
14" = 10' 0"	STEEL PIPE 1/4" DIA.
15" = 10' 0"	STEEL PIPE 3/16" DIA.
16" = 10' 0"	STEEL PIPE 1/8" DIA.
17" = 10' 0"	STEEL PIPE 1/16" DIA.
18" = 10' 0"	STEEL PIPE 1/32" DIA.
19" = 10' 0"	STEEL PIPE 1/64" DIA.
20" = 10' 0"	STEEL PIPE 1/128" DIA.
21" = 10' 0"	STEEL PIPE 1/256" DIA.
22" = 10' 0"	STEEL PIPE 1/512" DIA.
23" = 10' 0"	STEEL PIPE 1/1024" DIA.
24" = 10' 0"	STEEL PIPE 1/2048" DIA.
25" = 10' 0"	STEEL PIPE 1/4096" DIA.
26" = 10' 0"	STEEL PIPE 1/8192" DIA.
27" = 10' 0"	STEEL PIPE 1/16384" DIA.
28" = 10' 0"	STEEL PIPE 1/32768" DIA.
29" = 10' 0"	STEEL PIPE 1/65536" DIA.
30" = 10' 0"	STEEL PIPE 1/131072" DIA.
31" = 10' 0"	STEEL PIPE 1/262144" DIA.
32" = 10' 0"	STEEL PIPE 1/524288" DIA.
33" = 10' 0"	STEEL PIPE 1/1048576" DIA.
34" = 10' 0"	STEEL PIPE 1/2097152" DIA.
35" = 10' 0"	STEEL PIPE 1/4194304" DIA.
36" = 10' 0"	STEEL PIPE 1/8388608" DIA.
37" = 10' 0"	STEEL PIPE 1/16777216" DIA.
38" = 10' 0"	STEEL PIPE 1/33554432" DIA.
39" = 10' 0"	STEEL PIPE 1/67108864" DIA.
40" = 10' 0"	STEEL PIPE 1/134217728" DIA.
41" = 10' 0"	STEEL PIPE 1/268435456" DIA.
42" = 10' 0"	STEEL PIPE 1/536870912" DIA.
43" = 10' 0"	STEEL PIPE 1/1073741824" DIA.
44" = 10' 0"	STEEL PIPE 1/2147483648" DIA.
45" = 10' 0"	STEEL PIPE 1/4294967296" DIA.
46" = 10' 0"	STEEL PIPE 1/8589934592" DIA.
47" = 10' 0"	STEEL PIPE 1/17179869184" DIA.
48" = 10' 0"	STEEL PIPE 1/34359738368" DIA.
49" = 10' 0"	STEEL PIPE 1/68719476736" DIA.
50" = 10' 0"	STEEL PIPE 1/137438953472" DIA.
51" = 10' 0"	STEEL PIPE 1/274877906944" DIA.
52" = 10' 0"	STEEL PIPE 1/549755813888" DIA.
53" = 10' 0"	STEEL PIPE 1/1099511627776" DIA.
54" = 10' 0"	STEEL PIPE 1/2199023255552" DIA.
55" = 10' 0"	STEEL PIPE 1/4398046511104" DIA.
56" = 10' 0"	STEEL PIPE 1/8796093022208" DIA.
57" = 10' 0"	STEEL PIPE 1/17592186044416" DIA.
58" = 10' 0"	STEEL PIPE 1/35184372088832" DIA.
59" = 10' 0"	STEEL PIPE 1/70368744177664" DIA.
60" = 10' 0"	STEEL PIPE 1/140737488355328" DIA.
61" = 10' 0"	STEEL PIPE 1/281474976710656" DIA.
62" = 10' 0"	STEEL PIPE 1/562949953421312" DIA.
63" = 10' 0"	STEEL PIPE 1/1125899906842624" DIA.
64" = 10' 0"	STEEL PIPE 1/2251799813685248" DIA.
65" = 10' 0"	STEEL PIPE 1/4503599627370496" DIA.
66" = 10' 0"	STEEL PIPE 1/9007199254740992" DIA.
67" = 10' 0"	STEEL PIPE 1/18014398509481984" DIA.
68" = 10' 0"	STEEL PIPE 1/36028797018963968" DIA.
69" = 10' 0"	STEEL PIPE 1/72057594037927936" DIA.
70" = 10' 0"	STEEL PIPE 1/144115188075855872" DIA.
71" = 10' 0"	STEEL PIPE 1/288230376151711744" DIA.
72" = 10' 0"	STEEL PIPE 1/576460752303423488" DIA.
73" = 10' 0"	STEEL PIPE 1/1152921504606846976" DIA.
74" = 10' 0"	STEEL PIPE 1/2305843009213693952" DIA.
75" = 10' 0"	STEEL PIPE 1/4611686018427387904" DIA.
76" = 10' 0"	STEEL PIPE 1/9223372036854775808" DIA.
77" = 10' 0"	STEEL PIPE 1/18446744073709551616" DIA.
78" = 10' 0"	STEEL PIPE 1/36893488147419103232" DIA.
79" = 10' 0"	STEEL PIPE 1/73786976294838206464" DIA.
80" = 10' 0"	STEEL PIPE 1/147573952589676412928" DIA.
81" = 10' 0"	STEEL PIPE 1/295147905179352825856" DIA.
82" = 10' 0"	STEEL PIPE 1/590295810358705651712" DIA.
83" = 10' 0"	STEEL PIPE 1/1180591620717411303424" DIA.
84" = 10' 0"	STEEL PIPE 1/2361183241434822606848" DIA.
85" = 10' 0"	STEEL PIPE 1/4722366482869645213696" DIA.
86" = 10' 0"	STEEL PIPE 1/9444732965739290427392" DIA.
87" = 10' 0"	STEEL PIPE 1/18889465931478580854784" DIA.
88" = 10' 0"	STEEL PIPE 1/37778931862957161709568" DIA.
89" = 10' 0"	STEEL PIPE 1/75557863725914323419136" DIA.
90" = 10' 0"	STEEL PIPE 1/151115727451828646838272" DIA.
91" = 10' 0"	STEEL PIPE 1/302231454903657293676544" DIA.
92" = 10' 0"	STEEL PIPE 1/604462909807314587353088" DIA.
93" = 10' 0"	STEEL PIPE 1/1208925819614629174706176" DIA.
94" = 10' 0"	STEEL PIPE 1/2417851639229258349412352" DIA.
95" = 10' 0"	STEEL PIPE 1/4835703278458516698824704" DIA.
96" = 10' 0"	STEEL PIPE 1/9671406556917033397649408" DIA.
97" = 10' 0"	STEEL PIPE 1/19342813113834066795298816" DIA.
98" = 10' 0"	STEEL PIPE 1/38685626227668133590597632" DIA.
99" = 10' 0"	STEEL PIPE 1/77371252455336267181195264" DIA.
100" = 10' 0"	STEEL PIPE 1/154742504910672534362390528" DIA.



REV	BY	DATE	DESCRIPTION



LOCATION
 NINE STAR CAPITAL TRUCK GARAGE
 18751 ROUTE 202, NORTH
 HUNTSVILLE, ALABAMA 35894
 PROJECT NO. 201-0003874

HAMBAKER ENGINEERING
 1825 Wadsworth Road, Suite 201, State College, PA 16803
 717-334-4444
 hambakerengineering.com

PROJECT NO. 201-0003874
 SHEET NUMBER 21917
 TOTAL SHEETS 2 OF 12

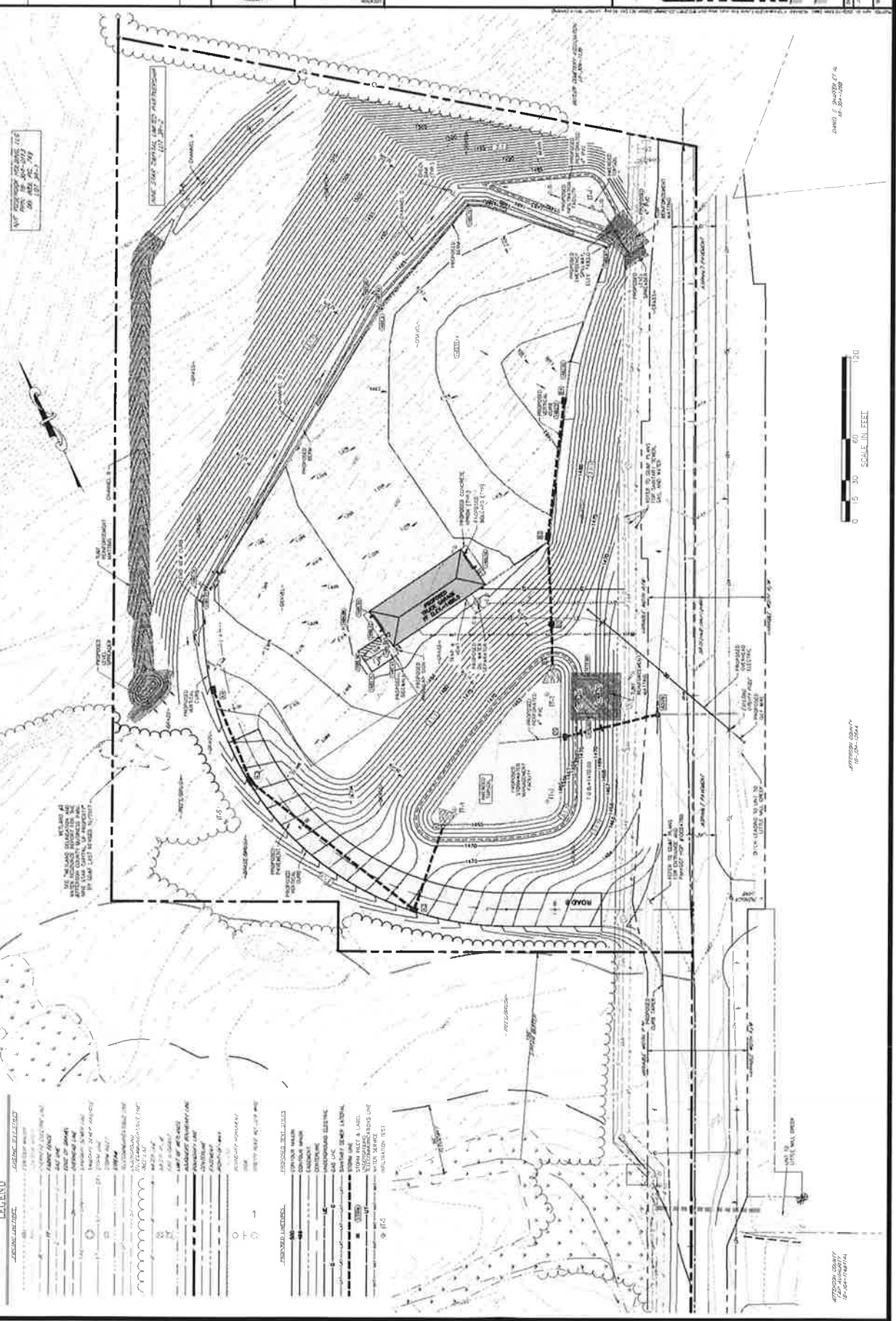
REV.	DATE	DESCRIPTION
1	1/25/17	REVISIONS FOR PERIODS REVIEW
2		
3		
4		



PROJECT: NINE STAR CAPITAL TRUCK GARAGE
 LOCATION: 1952 WYDRA ROAD, SUITE 201, STATE COLLEGE, PA 16803
 CLIENT: NINE STAR CAPITAL TRUCK GARAGE
 DATE: 1/25/17

GRADING UTILITY
CONSTRUCTION PLAN
FOR
NINE STAR CAPITAL TRUCK GARAGE

HAMBAKER ENGINEERING
 1952 Wydra Road, Suite 201, State College, Pa 16803
 717-200-2848 6550
 hambakerengineering.com
 SHEET NUMBER: **21917**
4 OF 12



LEGEND

	EXISTING STRUCTURE
	PROPOSED STRUCTURE
	EXISTING UTILITY
	PROPOSED UTILITY
	EXISTING ROAD
	PROPOSED ROAD
	EXISTING TOPOGRAPHY
	PROPOSED TOPOGRAPHY
	SPOT HEIGHT
	STORM WATER LABEL
	UTILITY AND DRAINAGE LINE
	INSPECTION TEST

JAMES S. SHROYER ET AL.
 No. 121917



APPROVED COPY
 16-124-1524

APPROVED COPY
 16-124-1524

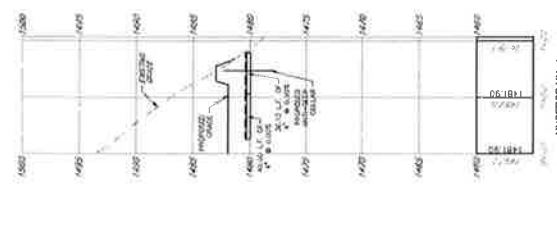
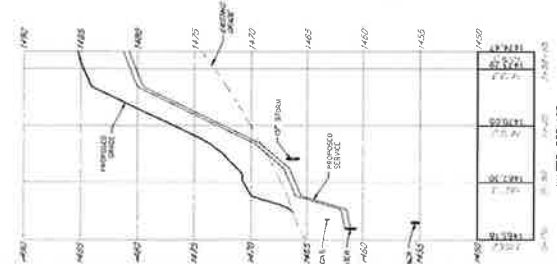
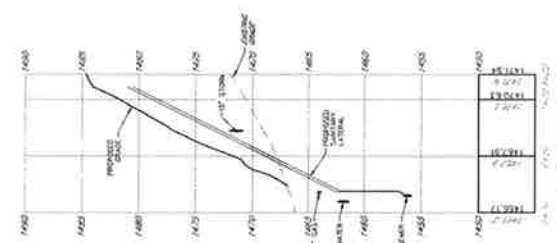
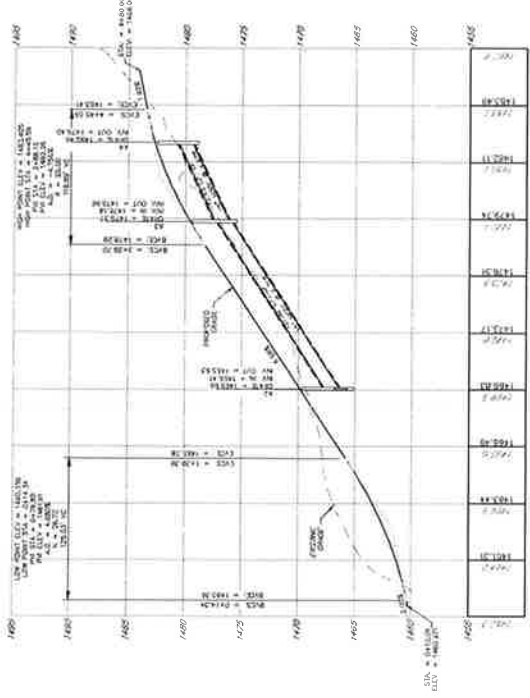
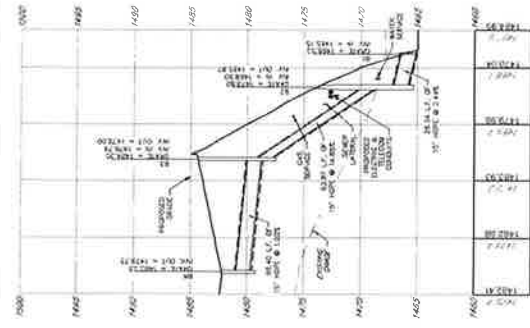
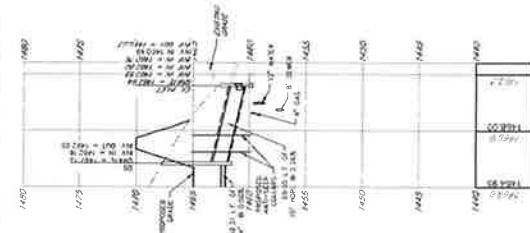
DATE	1/25/23	REVISION	REVISION FOR DESIGN
BY		CHK	



PROJECT: NINE STAR CAPITAL TRUCK GARAGE
 LOCATION: 152 WOODS ROAD, SUITE 201, STATE COLLEGE, PA 16803
 DATE: 1/25/23

PROFILES
CONSTRUCTION PLAN
FOR
NINE STAR CAPITAL TRUCK GARAGE

HAWBAKER ENGINEERING
 152 Woods Road, Suite 201, State College, Pa 16803
 Phone: 814-656-8500
 Fax: 814-656-8500
 Email: info@hawbakere.com
 SHEET NO. 21917
 TOTAL SHEETS 50 OF 12



DATE	ISSUED	BY

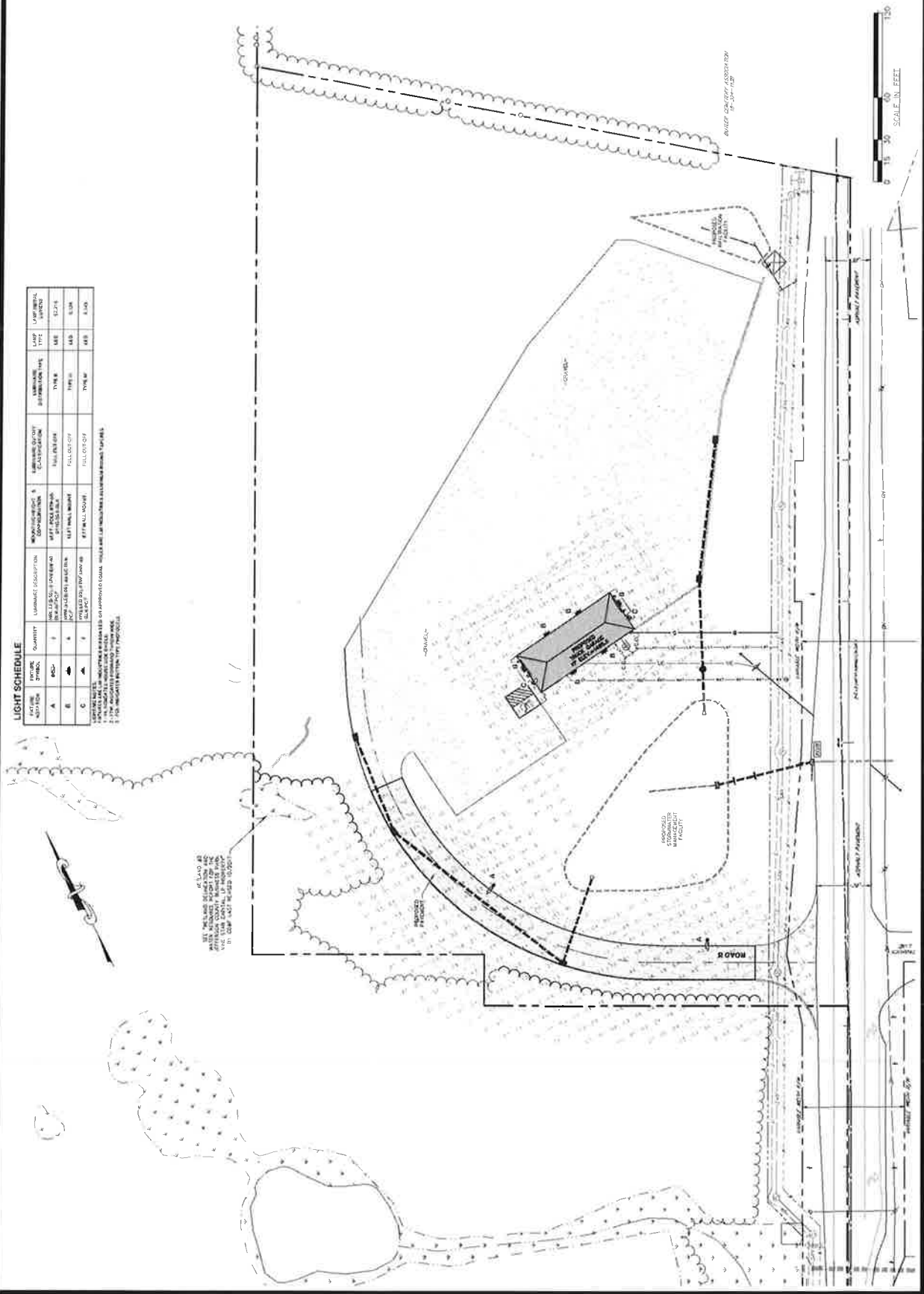


TITLE: NINE STAR CAPITAL TRUCK GARAGE
 PROJECT: NINE STAR CAPITAL, LP
 LOCATION: 1922 WYDIA ROAD, SUITE 201, SWIRE, PENNSYLVANIA 19083

LIGHTING
CONSTRUCTION PLAN
FOR
NINE STAR CAPITAL TRUCK GARAGE

HAWBAKER ENGINEERS
 1922 Wydia Road, Suite 201 Swire, PA 19083
 1-800-284-8550
 hawbakercorp.com
 hawbakercorp.com

DRAWING NUMBER: 21917
 SHEET NUMBER: 6 OF 12

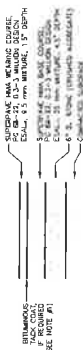


LIGHT SCHEDULE

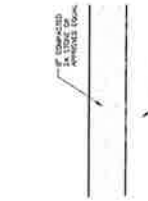
LETTER SYMBOL	QUANTITY	LUMINAIRE DESCRIPTION	MANUFACTURER & MODEL NUMBER	CLASSIFICATION	WIRING DISTRIBUTION TYPE	LAMP TYPE	LAMP WATTAGE
A	1	RECESSED PROJECT					
B	1	RECESSED AMBIENT					
C	1	RECESSED AMBIENT					

NOTES:
 1. ALL FIXTURES SHALL BE APPROXIMATELY EQUAL UNLESS OTHERWISE SPECIFIED.
 2. THE QUANTITY LISTED IS APPROXIMATE.

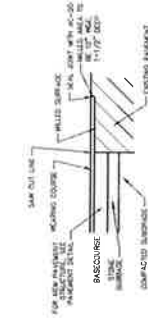
NOTE: REQUIREMENTS OF BEST PRACTICE ASPHALT PAVING TO BE FURNISHED, ASPHALT, CEMENT, SAND, GRAVEL, AND WATER SHALL BE FURNISHED BY THE CONTRACTOR. THE CONTRACTOR SHALL BE RESPONSIBLE FOR OBTAINING ALL NECESSARY PERMITS AND APPROVALS FROM THE LOCAL HEALTH DEPARTMENT AND LOCAL WATER SUPPLY AGENCY. THE CONTRACTOR SHALL BE RESPONSIBLE FOR OBTAINING ALL NECESSARY PERMITS AND APPROVALS FROM THE LOCAL HEALTH DEPARTMENT AND LOCAL WATER SUPPLY AGENCY. THE CONTRACTOR SHALL BE RESPONSIBLE FOR OBTAINING ALL NECESSARY PERMITS AND APPROVALS FROM THE LOCAL HEALTH DEPARTMENT AND LOCAL WATER SUPPLY AGENCY.



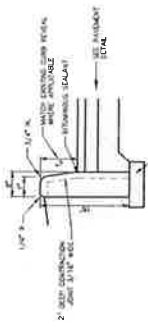
HEAVY DUTY PAVEMENT DETAIL
NOT TO SCALE



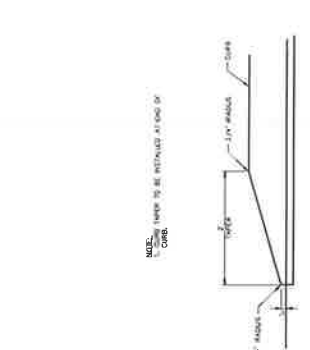
GRAVEL PARKING DETAIL
NOT TO SCALE



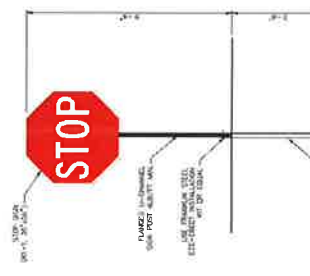
PAVEMENT SAW CUT DETAIL
NOT TO SCALE



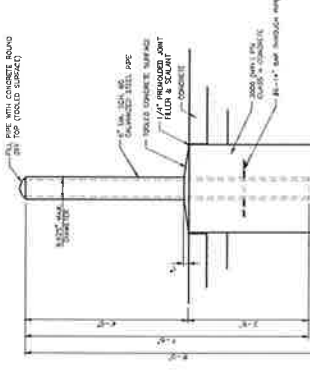
VERTICAL CURB DETAIL
NOT TO SCALE



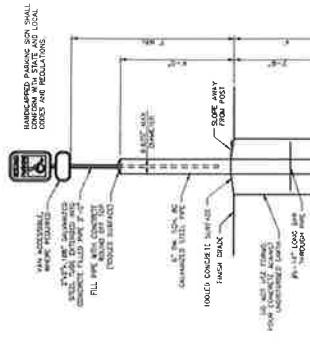
TYPICAL VERTICAL CURB TAPER DETAIL
NOT TO SCALE



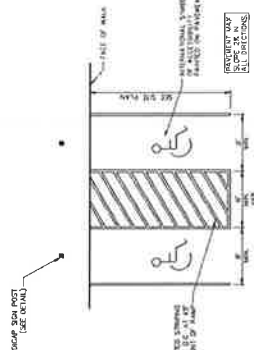
STOP SIGN DETAIL
NOT TO SCALE



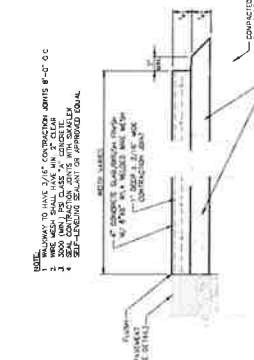
BOLLARD DETAIL
NOT TO SCALE



HANDICAP SIGN POST DETAIL
NOT TO SCALE

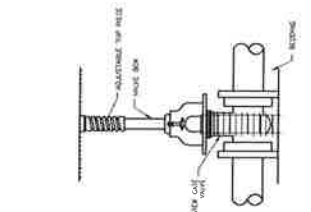


ACCESSIBLE PARKING STALLS
NOT TO SCALE



SIDEWALK AT PAVEMENT EDGE DETAIL
NOT TO SCALE

NOTES 1. ALL CONCRETE SHALL BE CAST WITH REINFORCEMENT... 2. ALL CONCRETE SHALL BE CURED WITH... 3. ALL CONCRETE SHALL BE TESTED AT... 4. ALL CONCRETE SHALL BE... 5. ALL CONCRETE SHALL BE... 6. ALL CONCRETE SHALL BE... 7. ALL CONCRETE SHALL BE...	PROJECT NAME NINE STAR CAPITAL TRUCK GARAGE DATE 03/04/08
---	--



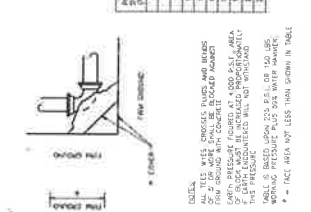
VALVE AND VALVE BOX DETAIL
NOT TO SCALE

PIPE SIZE	PIPE	VALVE	VALVE BOX	VALVE BOX	VALVE BOX
1/2"	1/2"	1/2"	1/2"	1/2"	1/2"
3/4"	3/4"	3/4"	3/4"	3/4"	3/4"
1"	1"	1"	1"	1"	1"
1 1/2"	1 1/2"	1 1/2"	1 1/2"	1 1/2"	1 1/2"
2"	2"	2"	2"	2"	2"
2 1/2"	2 1/2"	2 1/2"	2 1/2"	2 1/2"	2 1/2"
3"	3"	3"	3"	3"	3"
3 1/2"	3 1/2"	3 1/2"	3 1/2"	3 1/2"	3 1/2"
4"	4"	4"	4"	4"	4"
4 1/2"	4 1/2"	4 1/2"	4 1/2"	4 1/2"	4 1/2"
5"	5"	5"	5"	5"	5"
5 1/2"	5 1/2"	5 1/2"	5 1/2"	5 1/2"	5 1/2"
6"	6"	6"	6"	6"	6"
6 1/2"	6 1/2"	6 1/2"	6 1/2"	6 1/2"	6 1/2"
7"	7"	7"	7"	7"	7"
7 1/2"	7 1/2"	7 1/2"	7 1/2"	7 1/2"	7 1/2"
8"	8"	8"	8"	8"	8"

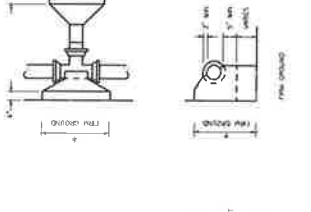
CONCRETE THRUST BLOCK DETAIL
NOT TO SCALE



CONCRETE THRUST BLOCK DETAIL
NOT TO SCALE



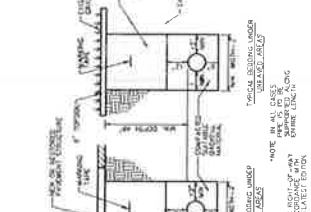
VALVE AND VALVE BOX DETAIL
NOT TO SCALE



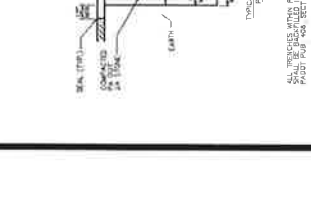
WATER LINE DETAIL
NOT TO SCALE



VALVE AND VALVE BOX DETAIL
NOT TO SCALE



VALVE AND VALVE BOX DETAIL
NOT TO SCALE



VALVE AND VALVE BOX DETAIL
NOT TO SCALE

INSTALLATION NOTES

- 1. THE TOP OF LIGHT BASE IS WITHIN 7.25 IN. REAR END SURFACE.
- 2. ALL CONCRETE SHALL BE CAST WITH REINFORCEMENT.
- 3. ALL CONCRETE SHALL BE CURED WITH...
 LOCAL CODE REQUIREMENTS / TEMPERATURE PER FEDERAL, STATE, AND LOCAL CODE REQUIREMENTS.

WATER LINE

- 1. THE TOP OF LIGHT BASE IS WITHIN 7.25 IN. REAR END SURFACE.
- 2. ALL CONCRETE SHALL BE CAST WITH REINFORCEMENT.
- 3. ALL CONCRETE SHALL BE CURED WITH...
 LOCAL CODE REQUIREMENTS / TEMPERATURE PER FEDERAL, STATE, AND LOCAL CODE REQUIREMENTS.

CONDUIT DETAIL

- 1. THE TOP OF LIGHT BASE IS WITHIN 7.25 IN. REAR END SURFACE.
- 2. ALL CONCRETE SHALL BE CAST WITH REINFORCEMENT.
- 3. ALL CONCRETE SHALL BE CURED WITH...
 LOCAL CODE REQUIREMENTS / TEMPERATURE PER FEDERAL, STATE, AND LOCAL CODE REQUIREMENTS.

CONDUIT DETAIL

- 1. THE TOP OF LIGHT BASE IS WITHIN 7.25 IN. REAR END SURFACE.
- 2. ALL CONCRETE SHALL BE CAST WITH REINFORCEMENT.
- 3. ALL CONCRETE SHALL BE CURED WITH...
 LOCAL CODE REQUIREMENTS / TEMPERATURE PER FEDERAL, STATE, AND LOCAL CODE REQUIREMENTS.



VALVE AND VALVE BOX DETAIL
NOT TO SCALE



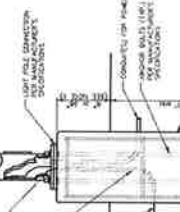
VALVE AND VALVE BOX DETAIL
NOT TO SCALE



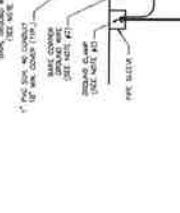
VALVE AND VALVE BOX DETAIL
NOT TO SCALE



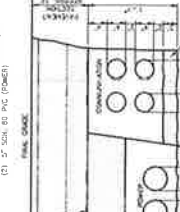
VALVE AND VALVE BOX DETAIL
NOT TO SCALE



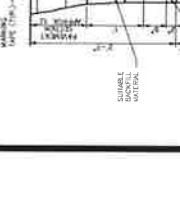
VALVE AND VALVE BOX DETAIL
NOT TO SCALE



VALVE AND VALVE BOX DETAIL
NOT TO SCALE



VALVE AND VALVE BOX DETAIL
NOT TO SCALE



VALVE AND VALVE BOX DETAIL
NOT TO SCALE

CONCRETE THRUST BLOCK DETAIL

- 1. THE TOP OF LIGHT BASE IS WITHIN 7.25 IN. REAR END SURFACE.
- 2. ALL CONCRETE SHALL BE CAST WITH REINFORCEMENT.
- 3. ALL CONCRETE SHALL BE CURED WITH...
 LOCAL CODE REQUIREMENTS / TEMPERATURE PER FEDERAL, STATE, AND LOCAL CODE REQUIREMENTS.

CONCRETE THRUST BLOCK DETAIL

- 1. THE TOP OF LIGHT BASE IS WITHIN 7.25 IN. REAR END SURFACE.
- 2. ALL CONCRETE SHALL BE CAST WITH REINFORCEMENT.
- 3. ALL CONCRETE SHALL BE CURED WITH...
 LOCAL CODE REQUIREMENTS / TEMPERATURE PER FEDERAL, STATE, AND LOCAL CODE REQUIREMENTS.

CONCRETE THRUST BLOCK DETAIL

- 1. THE TOP OF LIGHT BASE IS WITHIN 7.25 IN. REAR END SURFACE.
- 2. ALL CONCRETE SHALL BE CAST WITH REINFORCEMENT.
- 3. ALL CONCRETE SHALL BE CURED WITH...
 LOCAL CODE REQUIREMENTS / TEMPERATURE PER FEDERAL, STATE, AND LOCAL CODE REQUIREMENTS.

CONCRETE THRUST BLOCK DETAIL

- 1. THE TOP OF LIGHT BASE IS WITHIN 7.25 IN. REAR END SURFACE.
- 2. ALL CONCRETE SHALL BE CAST WITH REINFORCEMENT.
- 3. ALL CONCRETE SHALL BE CURED WITH...
 LOCAL CODE REQUIREMENTS / TEMPERATURE PER FEDERAL, STATE, AND LOCAL CODE REQUIREMENTS.



CONCRETE THRUST BLOCK DETAIL
NOT TO SCALE



CONCRETE THRUST BLOCK DETAIL
NOT TO SCALE



CONCRETE THRUST BLOCK DETAIL
NOT TO SCALE



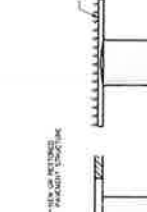
CONCRETE THRUST BLOCK DETAIL
NOT TO SCALE



CONCRETE THRUST BLOCK DETAIL
NOT TO SCALE



CONCRETE THRUST BLOCK DETAIL
NOT TO SCALE



CONCRETE THRUST BLOCK DETAIL
NOT TO SCALE



CONCRETE THRUST BLOCK DETAIL
NOT TO SCALE



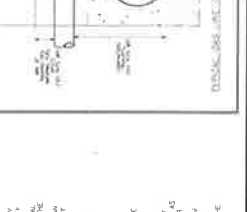
VALVE AND VALVE BOX DETAIL
NOT TO SCALE



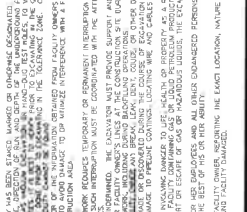
VALVE AND VALVE BOX DETAIL
NOT TO SCALE



VALVE AND VALVE BOX DETAIL
NOT TO SCALE



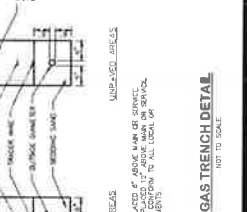
VALVE AND VALVE BOX DETAIL
NOT TO SCALE



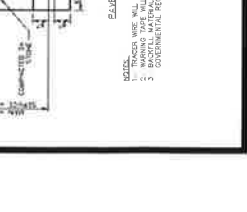
VALVE AND VALVE BOX DETAIL
NOT TO SCALE



VALVE AND VALVE BOX DETAIL
NOT TO SCALE



VALVE AND VALVE BOX DETAIL
NOT TO SCALE



VALVE AND VALVE BOX DETAIL
NOT TO SCALE

DATE	12/22	REVISION
BY		
CHK		

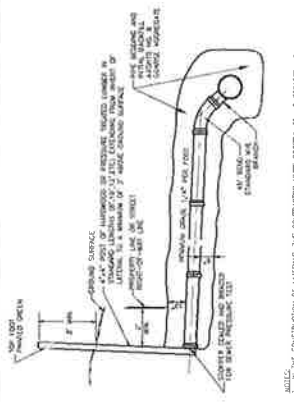


OWNER	NINE STAR CAPITAL TRUCK GARAGE
PROJECT	CONSTRUCTION PLAN
DATE	12/22/2011
SCALE	AS SHOWN
DESIGNER	HA/WBAKER ENGINEERING

DETAILS
FOR
CONSTRUCTION PLAN
FOR
NINE STAR CAPITAL TRUCK GARAGE

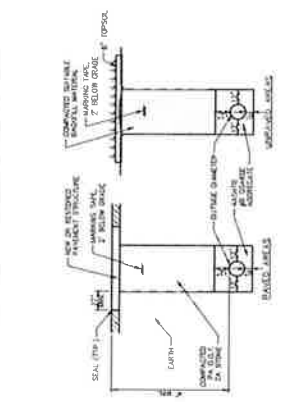
HA/WBAKER ENGINEERING
1852 Wixom Road, Suite 201, Wixom, Michigan 48394
800.284.8550
www.hawbakerengineering.com

SHEET NUMBER: **21917**
9 OF 12



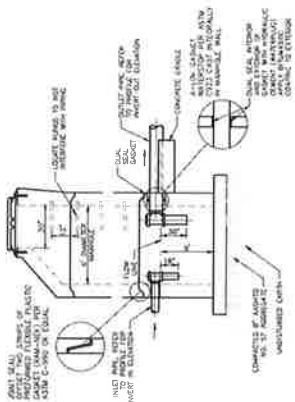
1. ALL CONNECTIONS TO LATERALS TO BE CONSTRUCTED WITH APPROVED CAST IRON FITTINGS. THE JOINTS SHALL BE PROVED BY TESTING UNDER WATER PRESSURE TO THE SAME DEGREE AS THE MAIN LINE. PROVIDE ADEQUATE SPACE TO THE FITTINGS AND THE CONNECTION SHALL BE PROVED BY TESTING UNDER WATER PRESSURE TO THE SAME DEGREE AS THE MAIN LINE. PROVIDE ADEQUATE SPACE TO THE FITTINGS AND THE CONNECTION SHALL BE PROVED BY TESTING UNDER WATER PRESSURE TO THE SAME DEGREE AS THE MAIN LINE.
2. EXPOSED EXPOSED LATERALS FOR A DISTANCE OF 3' ON EITHER SIDE OF A MAJOR JOINT SHALL BE PROVED BY TESTING UNDER WATER PRESSURE TO THE SAME DEGREE AS THE MAIN LINE.
3. EXPOSED EXPOSED LATERALS SHALL BE 3" MIN. ABOVE GROUND WITH 3000 PSI CONCRETE.

SANITARY LATERAL AND MARKER DETAIL
NOT TO SCALE

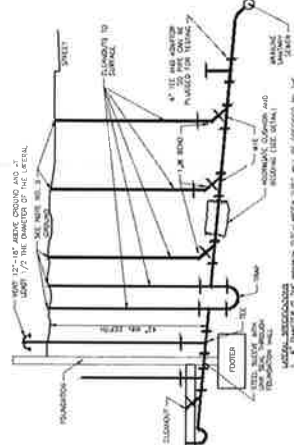


1. ALL TRENCHES WITH PAVED AVENUE TO BE BACKFILLED IN 4' LIFTS AND COMPACTED TO SUBMITTED SPECIFICATIONS.
2. ALL TRENCHES WITH PAVED AVENUE TO BE BACKFILLED IN 4' LIFTS AND COMPACTED TO SUBMITTED SPECIFICATIONS.
3. ALL TRENCHES TO GRADED AREAS TO BE BACKFILLED IN 4' LIFTS AND COMPACTED TO SUBMITTED SPECIFICATIONS.

SANITARY SEWER TRENCH DETAIL
NOT TO SCALE

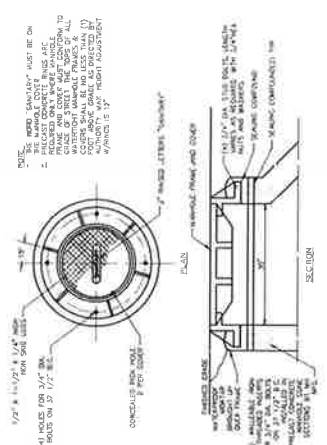


OIL WATER SEPARATOR
NOT TO SCALE



1. ALL MANHOLES SHALL BE CONSTRUCTED WITH APPROVED CAST IRON FITTINGS. THE JOINTS SHALL BE PROVED BY TESTING UNDER WATER PRESSURE TO THE SAME DEGREE AS THE MAIN LINE.
2. ALL MANHOLES SHALL BE CONSTRUCTED WITH APPROVED CAST IRON FITTINGS. THE JOINTS SHALL BE PROVED BY TESTING UNDER WATER PRESSURE TO THE SAME DEGREE AS THE MAIN LINE.
3. ALL MANHOLES SHALL BE CONSTRUCTED WITH APPROVED CAST IRON FITTINGS. THE JOINTS SHALL BE PROVED BY TESTING UNDER WATER PRESSURE TO THE SAME DEGREE AS THE MAIN LINE.

SANITARY LATERAL DETAIL
NOT TO SCALE



MANHOLE FRAME AND COVER DETAIL
NOT TO SCALE

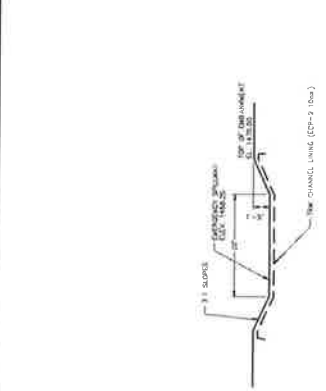
REV	DATE	DESCRIPTION
1	1/27/23	REFER DRAWING FOR REQUIRED EQUIPMENT



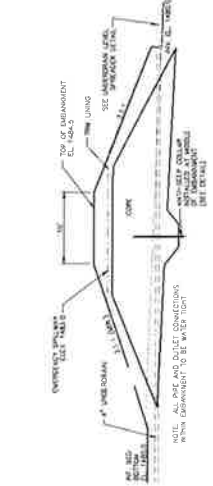
PROJECT	INVESTIGATION AND DESIGN FOR THE CONSTRUCTION OF A STORMWATER BASIN AND INFILTRATION BED AT THE NINE STAR CAPITAL TRUCK GARAGE
CLIENT	NINE STAR CAPITAL TRUCK GARAGE
DATE	1/27/23

**CONSTRUCTION PLAN
FOR
NINE STAR CAPITAL TRUCK GARAGE**

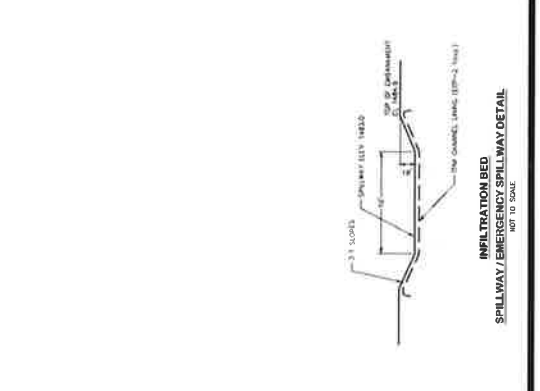
1852 W. Valley Road, Suite 201, Santa Coloma, CA 95050
 408-284-8550
 hawbakere.com



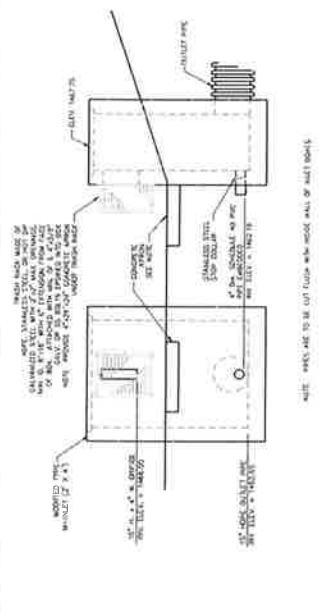
**STORMWATER BASIN EMERGENCY
SPILLWAY DETAIL**
TOP TO SCALE



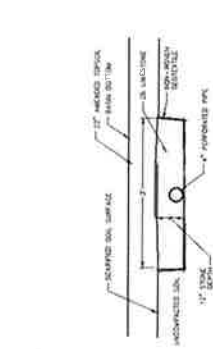
INFILTRATION BED OUTLET SECTION
NOT TO SCALE



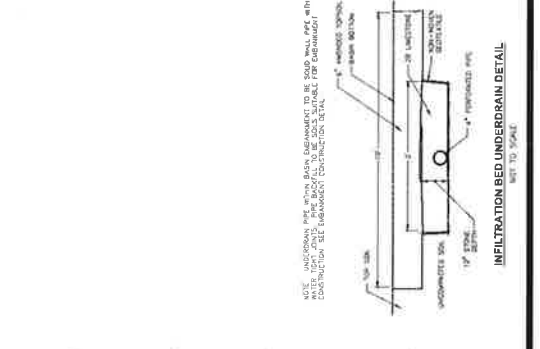
**INFILTRATION BED
SPILLWAY/EMERGENCY SPILLWAY DETAIL**
NOT TO SCALE



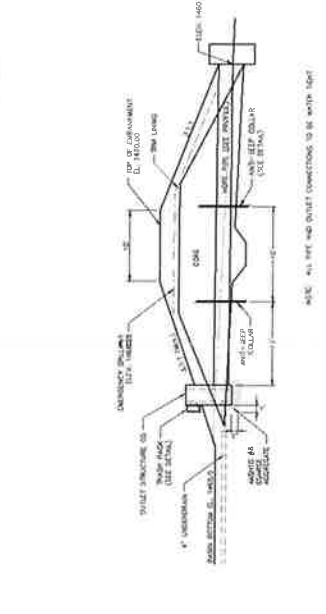
OUTLET STRUCTURE (OS) DETAIL
1/4\"/>



BASIN UNDERDRAIN DETAIL
NOT TO SCALE



INFILTRATION BED UNDERDRAIN DETAIL
NOT TO SCALE



STORMWATER BASIN OUTLET SECTION
NOT TO SCALE



TYPICAL BASIN EMBANKMENT SECTION
NOT TO SCALE



**STANDARD CONSTRUCTION DETAIL #7-18
CONCRETE T-SUBER COLLAR FOR
PERMANENT TRAPS OR TRAPS**
NOT TO SCALE

SECTION	DEPTH	WIDTH	LENGTH	WEIGHT
SECTION 1	12\"/>			

CONSTRUCTION OF EMBANKMENT SHALL BE ACCORDING TO THE FOLLOWING: 1. THE EMBANKMENT SHALL BE CONSTRUCTED WITH A 3:1 SLOPE. 2. THE EMBANKMENT SHALL BE CONSTRUCTED WITH A 12\"/>

CONVERSION OF BASIN TO POSM FACILITY



AMENDED SOIL PLACEMENT IN THE INFILTRATION BASIN AND INFILTRATION BED IS TO BE ACCORDING TO THE FOLLOWING: 1. THE AMENDED SOIL SHALL BE CONSTRUCTED WITH A 3:1 SLOPE. 2. THE AMENDED SOIL SHALL BE CONSTRUCTED WITH A 12\"/>

AMENDED SOIL

AMENDED SOIL SHALL BE CONSTRUCTED WITH A 3:1 SLOPE. THE AMENDED SOIL SHALL BE CONSTRUCTED WITH A 12\"/>

DATE	F/15/13	ISSUED FOR RECORD	PROVISION
BY	KM		



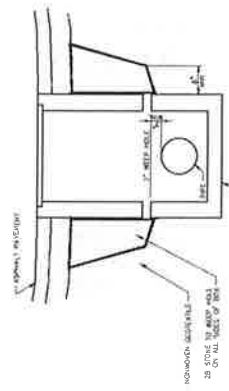
DETAILS

CONSTRUCTION PLAN

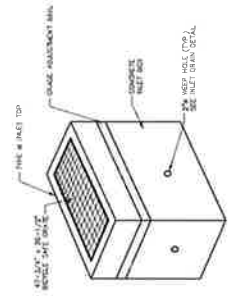
NINE STAR CAPITAL TRUCK GARAGE

LOCATION: NINE STAR CAPITAL TRUCK GARAGE
 PROJECT: NINE STAR CAPITAL TRUCK GARAGE
 SHEET NO: 21917
 DATE: F/15/13

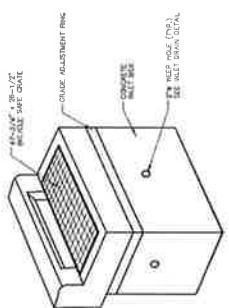
HAWBAKER ENGINEERING
 1552 Westwood Road, Suite 201, Steam Springs, FL 32083
 850-294-8550
 hawbakering.com



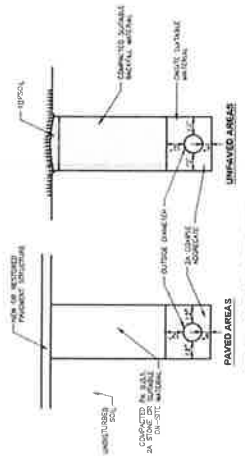
INLET DRAIN DETAIL
NOT TO SCALE



TYPE 'M' INLET
NOT TO SCALE

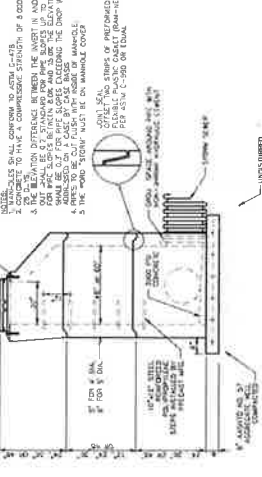


TYPE 'C' INLET
NOT TO SCALE



STORM SEWER TRENCH DETAIL
NOT TO SCALE

MANHOLE DELETED FROM TRENCH (DO NOT DEEPEN) SHALL BE A MINIMUM OF FIVE (5) FEET IN DIAMETER. MANHOLES SHALL HAVE A MINIMUM DRAINAGE RATE OF TWO (2) FEET VERTICALLY. MANHOLE DELETED SHALL BE TEN (10) FEET VERTICALLY.



STORM SEWER MANHOLE DETAIL
NOT TO SCALE

