



For Lease Private Offices



INTERIOR VIEW | Renovated Lobby

Curated Office Space

Newly renovated, 2116 Bissonnet is conveniently located in the Boulevard Oaks/Southampton neighborhoods of Houston. The building renovation is designed by Michael Hsu Office of Architecture and developed by the Platform Investment Group, LLC. The building features a new brick facade, expansive glazing, fresh interior design, ample parking, and access to neighborhood amenities.

Site Information



LOCATION

2116 Bissonnet Street

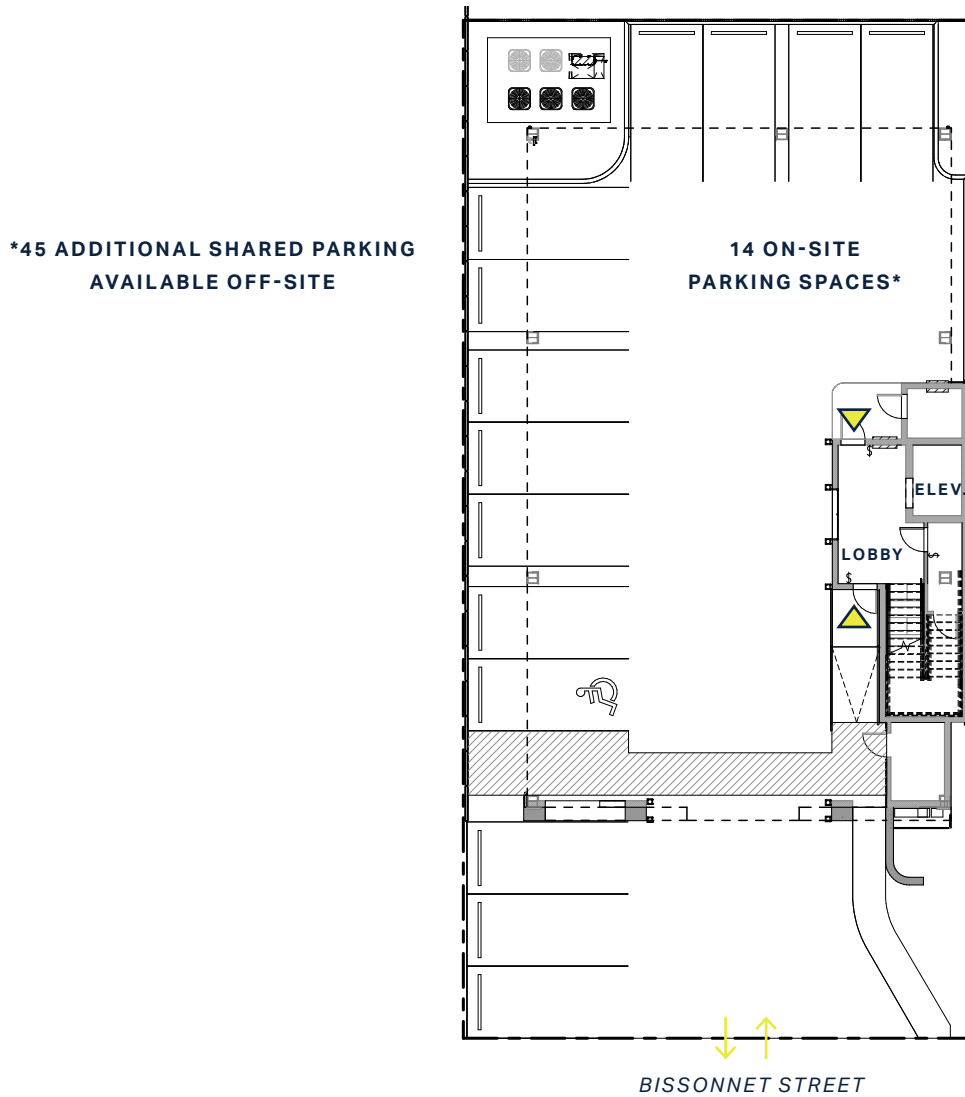
SPACE AVAILABLE

Private offices ranging from
107-155 square feet each

DELIVERY DATE

Late Spring/Early Summer 2024

For more information, please call → **713.352.6888**



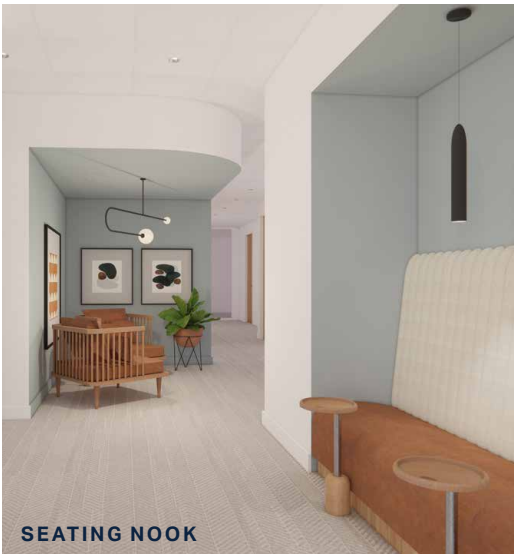
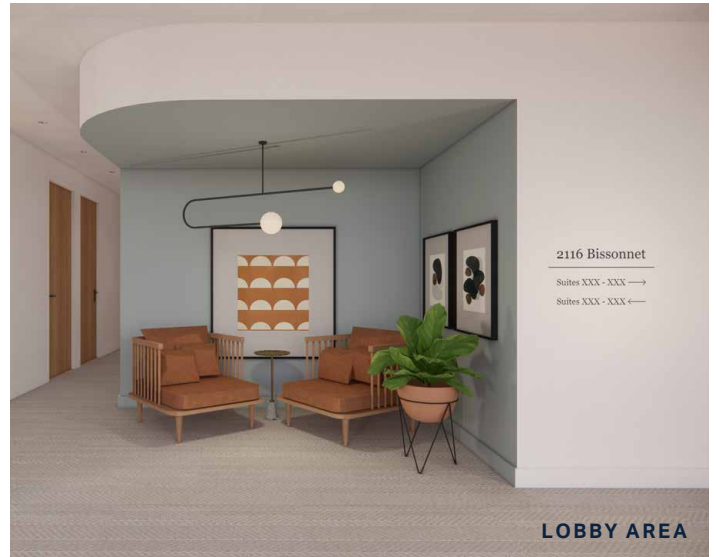
Site Plan

Location and Access

The ground floor consists of a lobby with interior stairs and elevator up to the office space on the second floor. Exterior parking below the building is accessed from Bissonnet Street.

PARKING

14 parking spaces on site
45 additional shared parking spaces at 2132 and 2210 Bissonnet
125+ street parking spaces within three minute walk



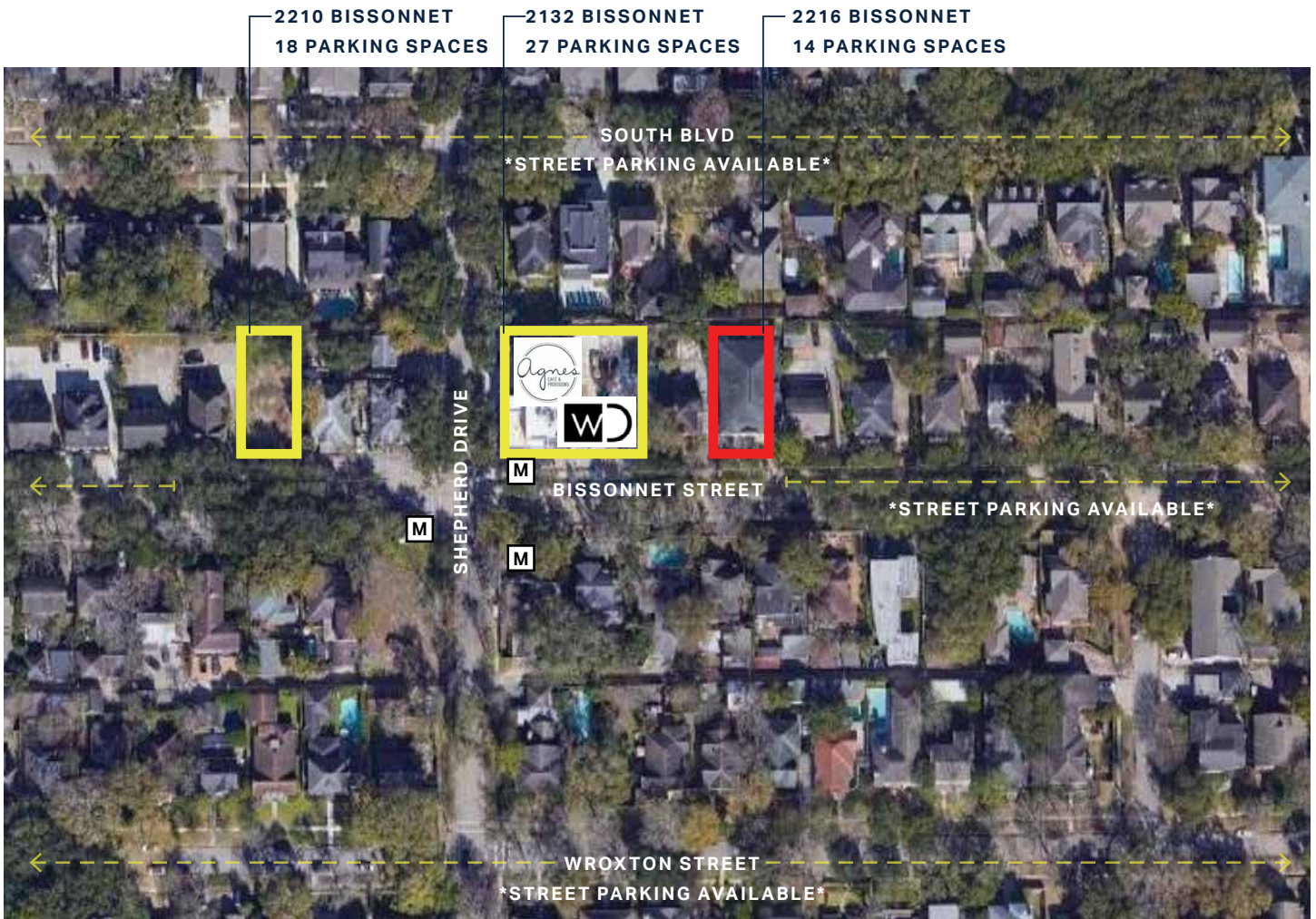
Level 2

Private Offices

The second floor is currently being built out as sixteen individual offices which will be rented fully furnished on a monthly basis. In addition to their private office, tenants will have access to the shared conference room, kitchenette, and restrooms. Offices will range in size from 107-150 sf. All utilities, including internet, will be included in the monthly rent.

OFFICE FEATURES

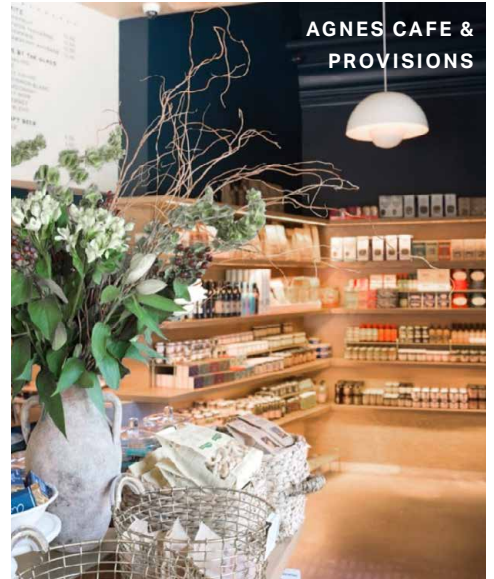
- High end finishes*
- Fully furnished*
- Tree canopy views*



Access

Parking and Bus Access

In addition to the 14 parking spaces provided on-site, this building has shared access to 45 parking spaces at 2132 and 2210 Bissonnet. An additional 125+ street parking spaces are available along Bissonnet Street, South Boulevard and Wroxton Street within a three minute walk. The site is also located along the city's Metro bus system, with Bus 27 and 65 stopping nearby.

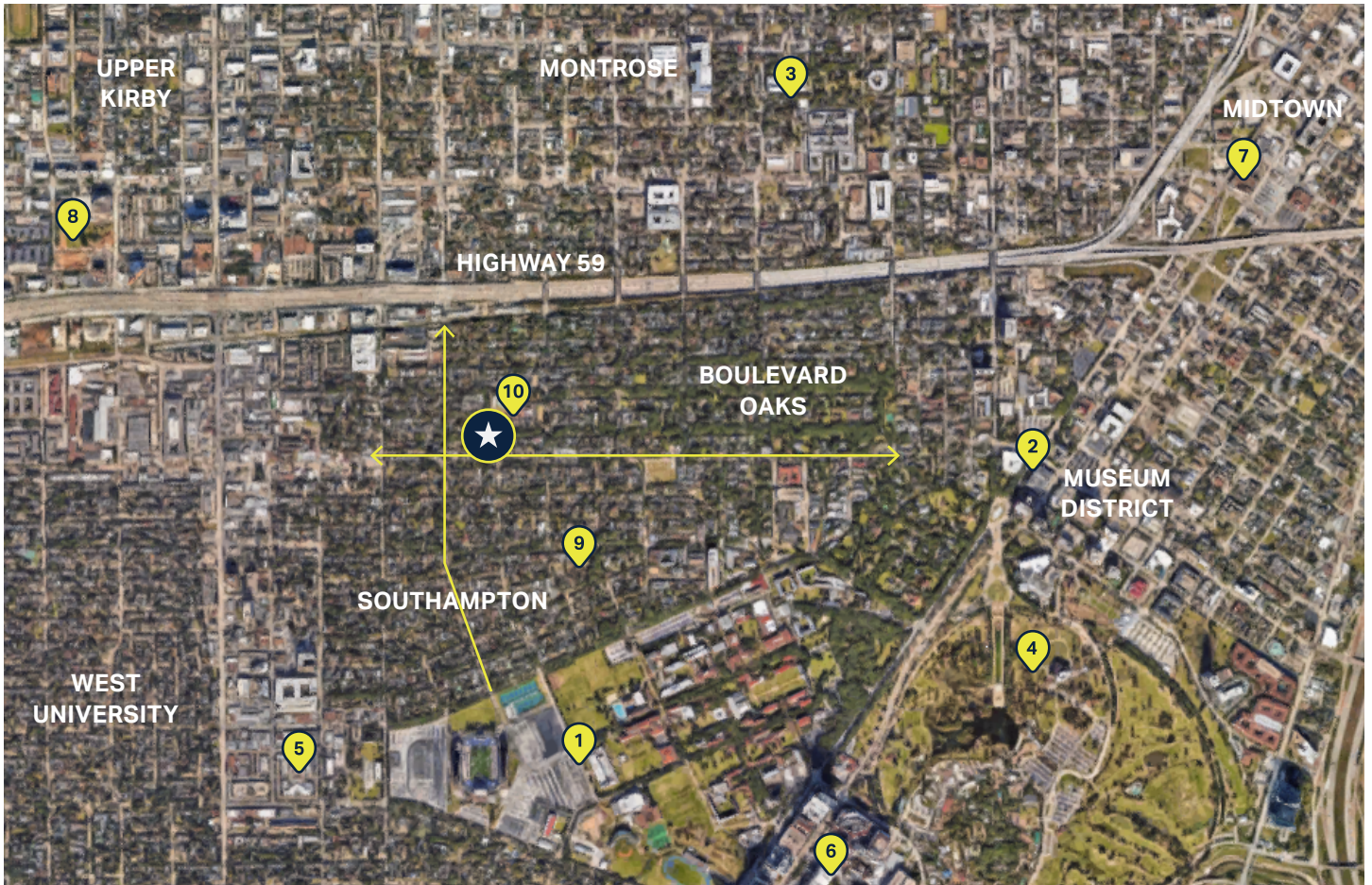


Neighbors

2132 Bissonnet

Completed in 2019, the nearby 2132 Bissonnet was also designed by Michael Hsu Office of Architecture and developed and owned by the Platform Group, LLC.

- TENANTS**
- Agnes Cafe & Provisions*
 - Westlake Dermatology*
 - Platform Group*
 - Collectively*
 - Advice for Eating*



Area Map

- | | | |
|--|--|---|
| 1 Rice University
<i>World-class educational institution</i> | 5 Rice Village Retail Center
<i>Over 35 retailers at open air mall</i> | 9 Fleming Park
<i>Neighborhood park</i> |
| 2 Museum of Fine Arts
<i>Expansive art museum</i> | 6 Texas Medical Center
<i>Medical district</i> | 10 Poe Elementary School
<i>Local elementary school</i> |
| 3 Menil Collection
<i>Collection of museum pavilions</i> | 7 The Ion
<i>Innovation hub</i> | |
| 4 Herman Park
<i>Historic public park</i> | 8 Levy Park
<i>Newly opened public park</i> | |