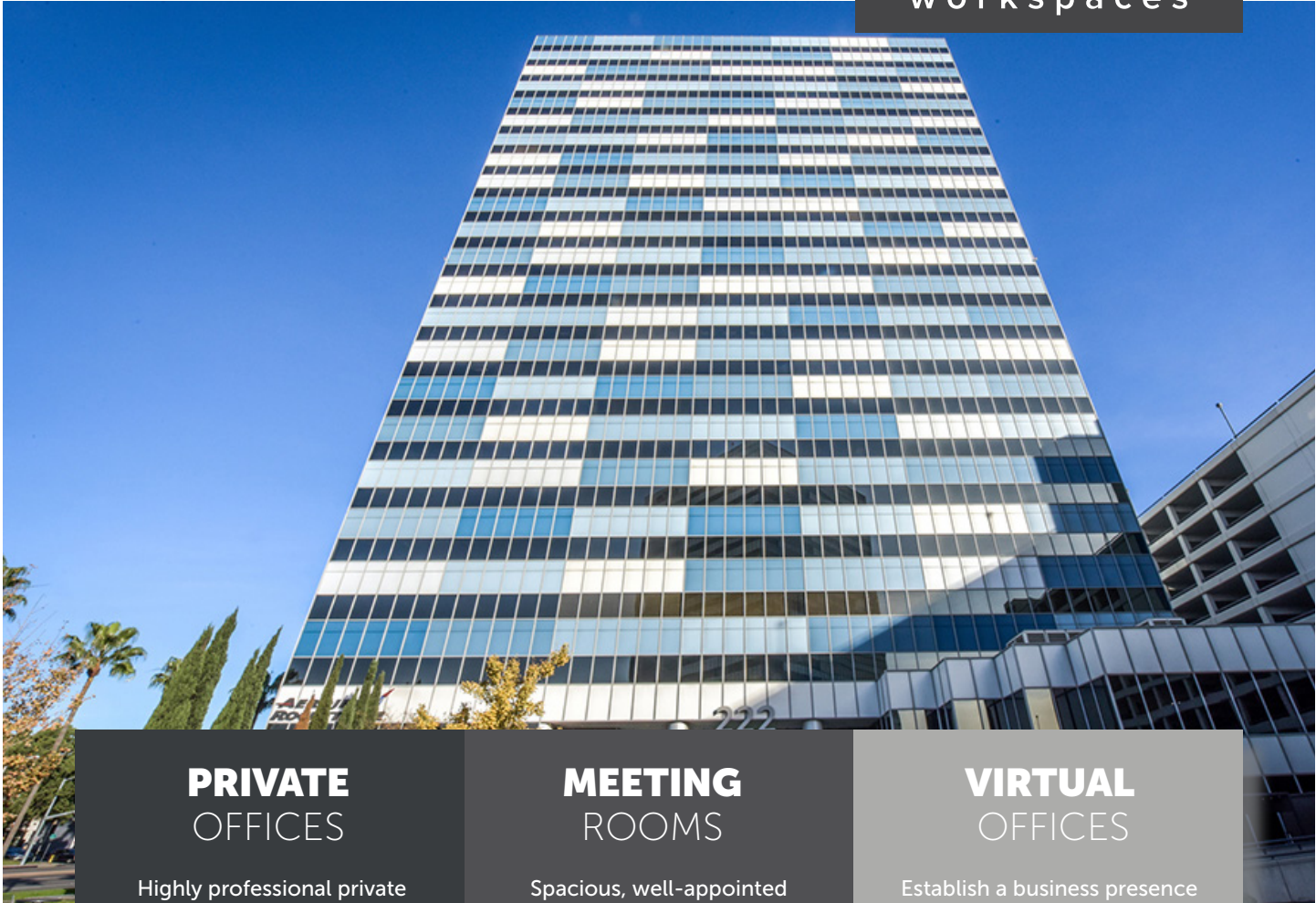


El Segundo

222 N. PCH, Suite 2000, El Segundo, CA 90245



PRIVATE OFFICES

Highly professional private offices for individuals and teams that are flexible and scaled for growth.

MEETING ROOMS

Spacious, well-appointed meeting rooms with on-site administrative support. Available for an hour, day or longer.

VIRTUAL OFFICES

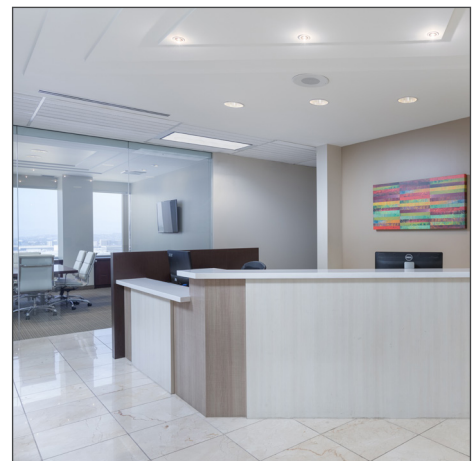
Establish a business presence with mail handling, phone answering or meeting room time.

ABOUT THIS LOCATION

Our El Segundo, California location is a trophy building most recognized as the PCT (formerly Pacific Corporate Towers). This LEED Gold Certified building, with an Energy Star label, features impressive, 9-foot high windows with breathtaking views of the Pacific Ocean, LAX, the Palo Verdes Peninsula, and the Los Angeles skyline in the executive office spaces and meeting rooms. El Segundo is an ideal city to do business in, specifically due to the tax benefits, as El Segundo has the lowest business taxes in the region. If your business is looking for a prestigious office location in or around the El Segundo area, Premier Workspaces has the solution.

CONTACT US

Let's touch base! Contact the on-site General Manager at 310-364-5200 or ELSmanger@premierworkspaces.com to schedule a tour.



PREMIER AMENITIES

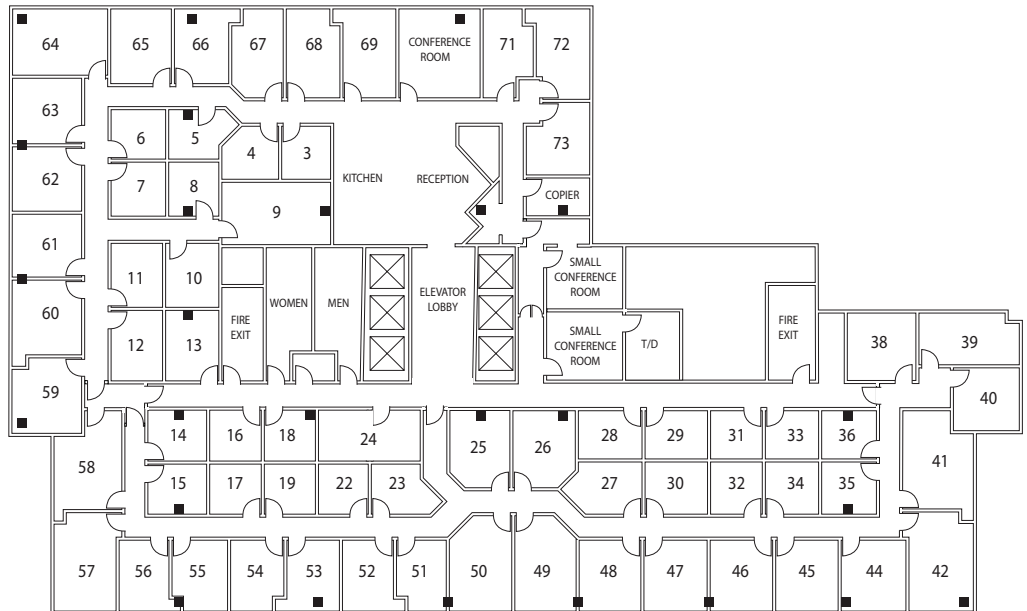
Our private suites can be easily customized to fit your desired aesthetic and brand.

- Private Offices
- Team Rooms
- High Speed Internet
- Telephone Answering
- Mail Collection
- Equipped Kitchen
- Day Offices
- Meeting Rooms
- Daily Janitorial
- Furnished or Unfurnished

PREMIER DIFFERENCE

We've been perfecting the professional workspace for over 17 years.

- Highly-Professional Atmosphere
- On-Site Manager & Support Staff
- Scalable Solutions for Individuals and Teams
- On-Site Billing
- 90+ Locations Nationwide



NEARBY AMENITIES

This location is perfect for the traveling business person, as LAX is only a mile and a half from the building, just 3 minutes away, and the Hawthorne Municipal Airport is only 6 miles and an 11 minute drive away. Free shuttles to and from LAX, as well as downtown El Segundo, are also available.

Nearby Amenities:

- ArcLight Cinemas
- Dockweiler Beach
- Manhattan Beach Mall
- Historic El Segundo

Nearby Transit:

- Parking – On-Site
- Freeways – 5 (Immediately Adjacent)
- Air – Los Angeles International Airport (LAX)
- Bus – Station Across the Street

CONTACT US

Let's touch base! Contact the on-site General Manager at 310-364-5200 or ELSmanager@premierworkspaces.com to schedule a tour.