



# FOR LEASE

1550 & 1560 Veterans Memorial Pkwy | Saint Charles, MO 63303



# 1550 Veterans Memorial Parkway



## Property Features

3,000 SF, Single-Tenant Building

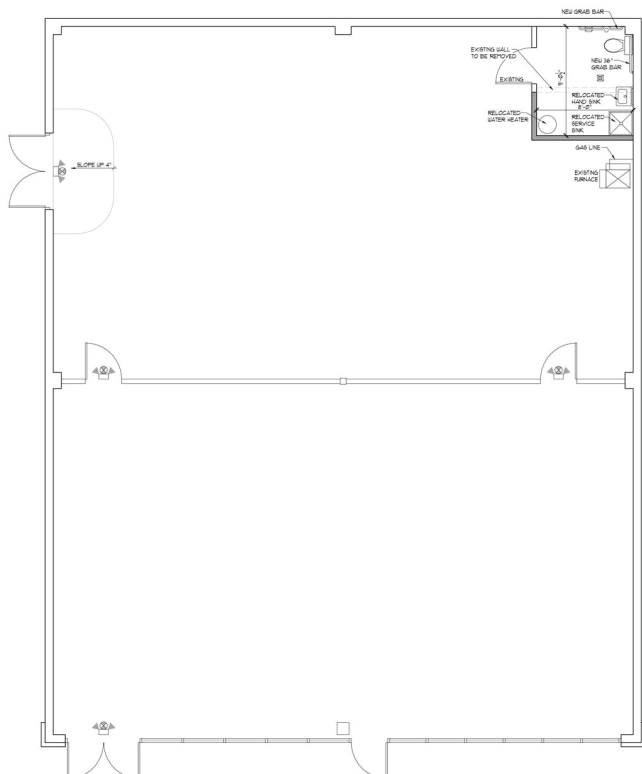
Open Floorplan

Digital Signage available for Tenant's Use

Perfect for restaurant or QSR

Site can accommodate Drive-Thru

Adjacent to St. Charles Convention Center,  
Streets of St. Charles and Main Street St.  
Charles



**LEASE RATE**

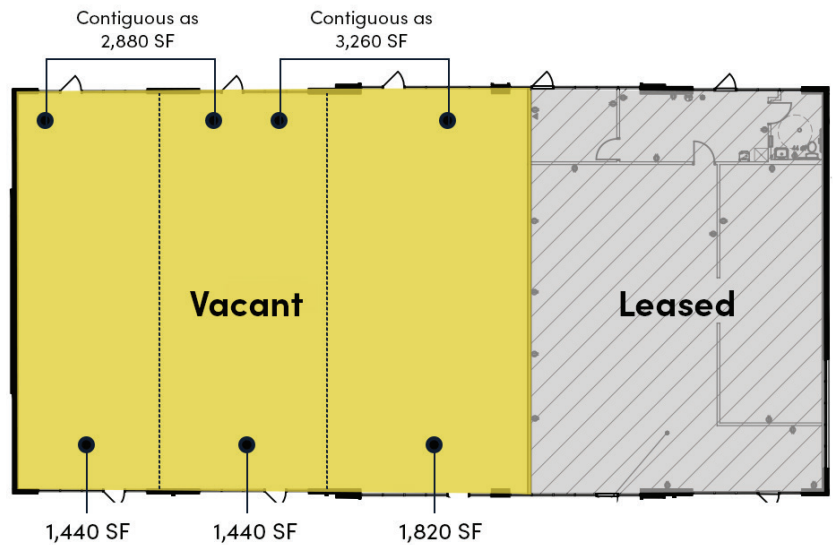
**\$24.00 PSF NNN**

# 1560 Veterans Memorial Parkway



## Property Features

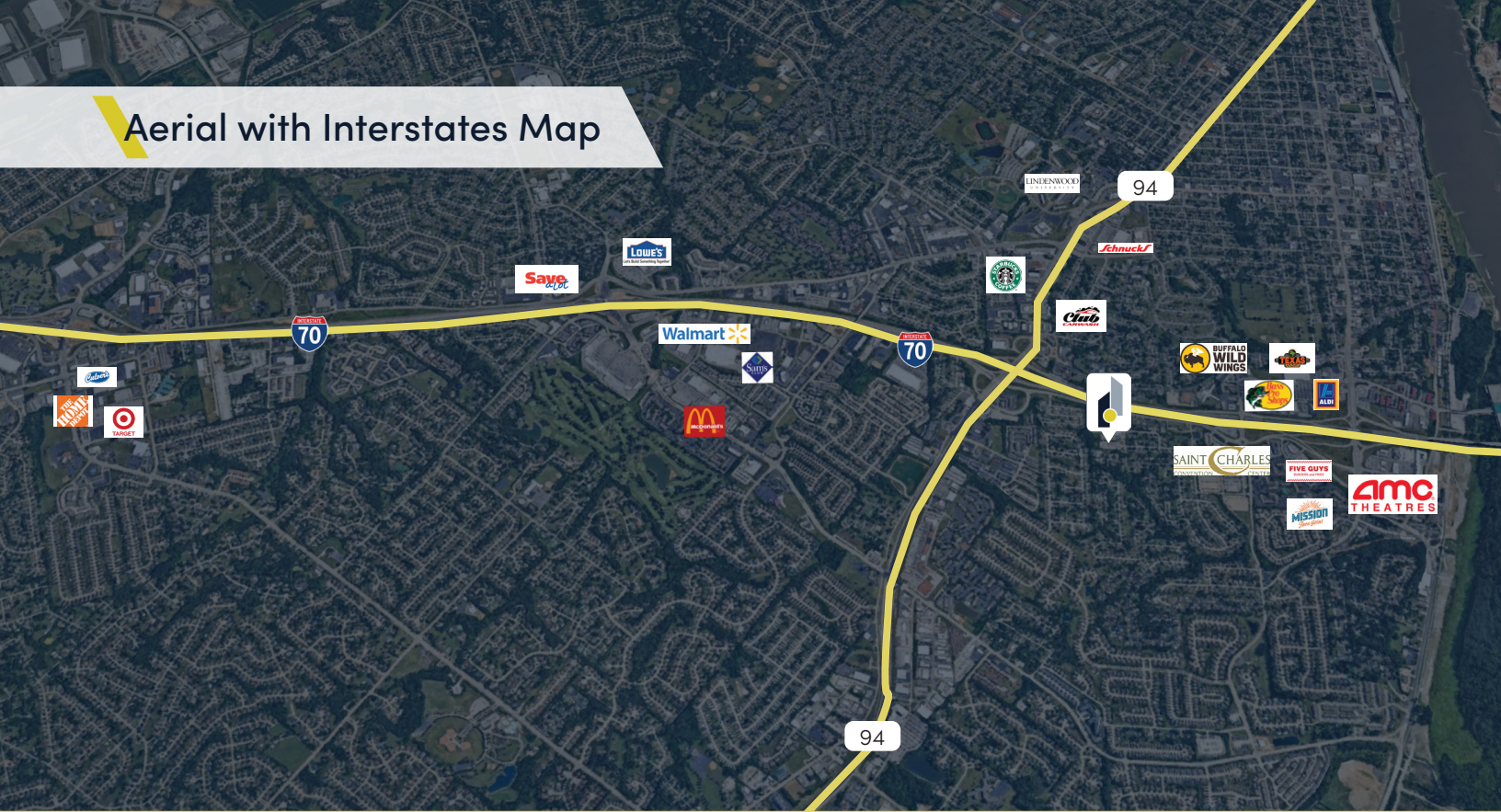
- 4,700 SF, divisible to 1,440 SF
- New Construction
- Highway Visibility
- Abundance of parking
- Adjacent to St. Charles Convention Center, Streets of St. Charles and Main Street St. Charles



**LEASE RATE**  
**\$26.00 PSF NNN**



## Aerial with Interstates Map



## About the Property



Located along Highway 70, the most heavily traveled highway in Missouri



This newly constructed site is conveniently located just 8 miles from Lambert St. Louis Airport



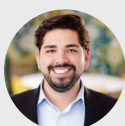
This property is minutes from major shopping centers including an AMC Theatres, Premier Shopping and Upscale and Fast Casual Restaurants.



This site is also just minutes from Historic St. Charles Main Street with more than 100 shops, restaurants and cafes in a preserved historic district great for tourists and locals.



The St. Charles Convention Center is within walking distance and sees over 300,000 attendees each year.



**Drew Clary**

Principal  
(314) 744-8978 | dclary@intcre.com



**Ben Bacino**

Associate | Brokerage  
(314) 660-5225 | bbacino@intcre.com