



Norwood Office Park – 7400-7410 New Lagrange Road, Louisville, KY

NTS is pleased to present Norwood Office Park, an exciting leasing opportunity in the heart of St. Matthews. Norwood Office Park features two buildings combined of approximately 80,000 square feet of first class office space. Please see the information below for more details:

FOR LEASE

- Norwood I (7400 Building): ~46,000 SF with 4 floors
- Norwood II (7410 Building): ~34,000 SF with 3 floors
- Excellent accessibility off Shelbyville Road & I-264
- Full-service lease includes all operating expenses, utilities, maintenance and janitorial services
- Abundant natural light throughout the suites
- Abundant free surface parking ideal for dense users
- Prime location in St. Matthews
- Abundant retail, hotels and amenities nearby
- Professional on-site maintenance and day porter service
- Professional space planning provided

For more information or to schedule a tour, please contact:

Tony Fluhr, SIOR, CCIM

Managing Director
502.429.9820
tfluhr@ntsdevco.com

Mark Meredith, CCIM

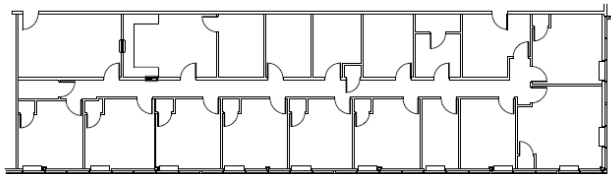
Director of Commercial Leasing
502.429.9827
mmeredith@ntsdevco.com

www.ntsdevelopment.com

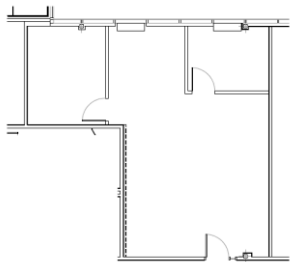
NTS



AVAILABLE SUITE FLOOR PLANS | NORWOOD I



Norwood I | Suite 302 | 3,926 RSF



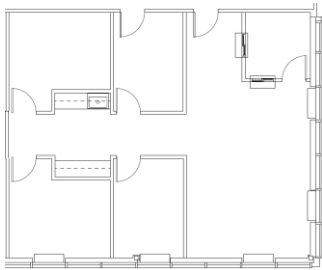
Norwood I | Suite 305 | 884 RSF



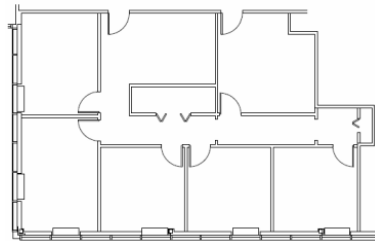
Although all information furnished regarding the property for sale, rental, or financing is from sources deemed reliable, such information has not been verified and no express representation is made nor is any to be implied as to the accuracy thereof and it is submitted subject to errors, omissions, change of price, rental or other changes or conditions, prior sale, lease financing, or withdrawal without notice and to any special conditions imposed by our principal.



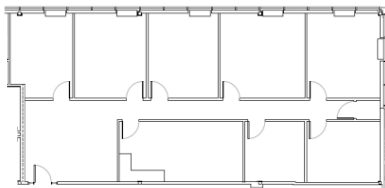
AVAILABLE SUITE FLOOR PLANS | NORWOOD II



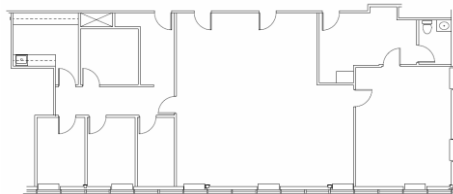
Norwood II | Suite 207 | 1,337 RSF



Norwood II | Suite 302 | 1,706 RSF



Norwood II | Suite 315 | 2,331 RSF



Norwood II | Suite 320 | 2,694 RSF

Although all information furnished regarding the property for sale, rental, or financing is from sources deemed reliable, such information has not been verified and no express representation is made nor is any to be implied as to the accuracy thereof and it is submitted subject to errors, omissions, change of price, rental or other changes or conditions, prior sale, lease financing, or withdrawal without notice and to any special conditions imposed by our principal.