

FOR LEASE - THE SHOPS AT BYNUM RUN

“Northern Bel Air” Retail, Flex Space & Pad Sites

1651 Robin Circle, Forest Hill, MD 21050



FALL DELIVERY 2019

Property Highlights:

- New In-Line Retail; servicing Bel Air, Forest Hill and northern Harford County
- Great access from Route 23, Route 24, Route 1, Granary Road via Water Tower Way. Great Visibility From Route 23 and Water Tower Way
- Retail Building: 12,000 SF; 8 units @1,500 square foot spaces each. Can be combined; from 1,500 to 12,000 SF
- Retail: \$23.00 sq. Ft NNN
- Up to 5 Pad Sites Available from 0.5 Acre to 4 Acres
- Pad Sites Available: \$85,000.00 to \$225,000.00
- Zoned: B3 (Highest Commercial)

Zoning Allows For:

- **Lodging/Hotels**
- **Residential/Multi-Family**
- **Retail**
- **Office**
- **Mixed Use**
- **Variety Of Other Uses**



DEMOGRAPHICS:

Population	1 MILE	5 MILE
2018 Total Population:	7,571	81,122
Pop. Growth 2018-2023:	1.21%	1.9%
Average Age:	38.5	40.7
Households		
2018 Total Households:	2,704	29,58638
Median Household Income:	\$100,171	\$98,851
Avg. Household Size:	2.8	2.7

CONTACT:

Bill Vanden Eynden
443-528-6782

billv@bcvcommercialrealty.com

David Karczeski
410-215-8471

davidk@bcvcommercialrealty.com

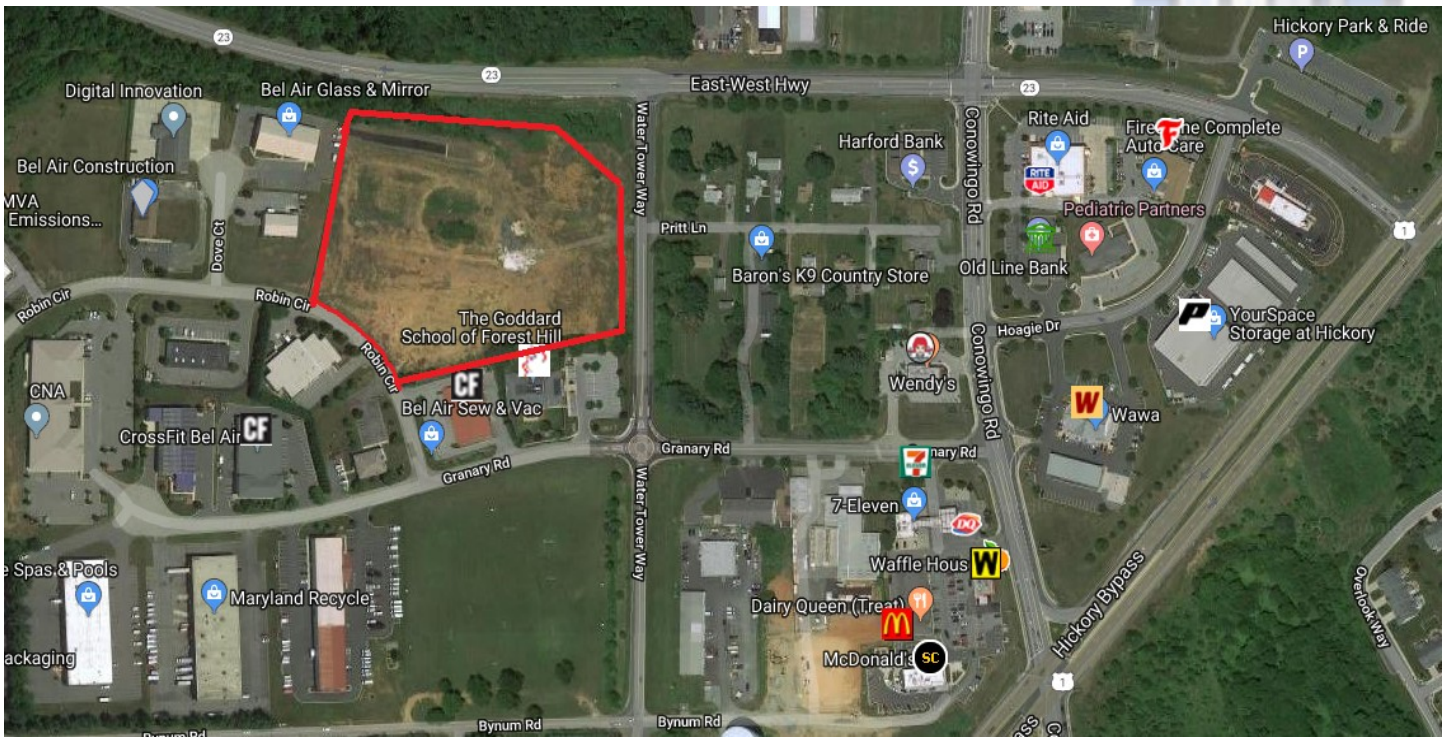


1301 York Rd. Suite 400, Lutherville, MD 21093
Ph. 410.296.2626 | Fax 410.296.2660

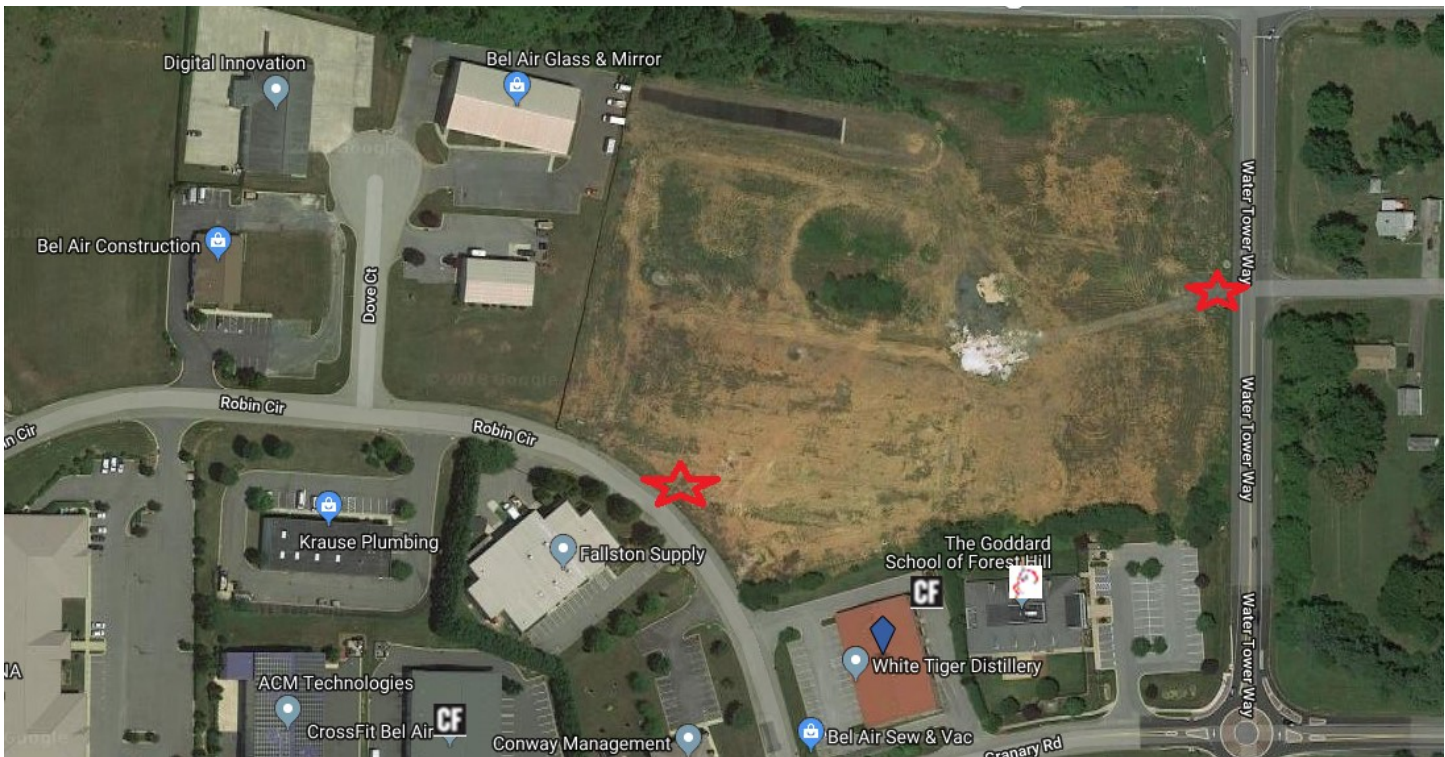
DISCLAIMER: The information provided herein was furnished by Seller indicated above & evidenced by the Exclusive Agreement. Broker makes no representations as to the accuracy or reliability of said information. We recommend financial & legal counsel be available to assist you throughout the transaction due to the significance of this data.

THE SHOPS AT BYNUM RUN

1651 Robin Circle, Forest Hill, MD 21050



INGRESS/EGRESS FROM ROBIN CIRCLE DRIVE and WATER TOWER WAY



1301 York Rd. Suite 400, Lutherville, MD 21093
Ph. 410.296.2626 | Fax 410.296.2660