

□ MH EX. PEDESTAL

N03°41'45"E 296.76'

ITEM #25
2' WIDE WATER EASEMENT
P.B. 270, PG. 20

ITEM #19
5.5' PUBLIC UTILITY
EASEMENT
L. 16953, F. 793

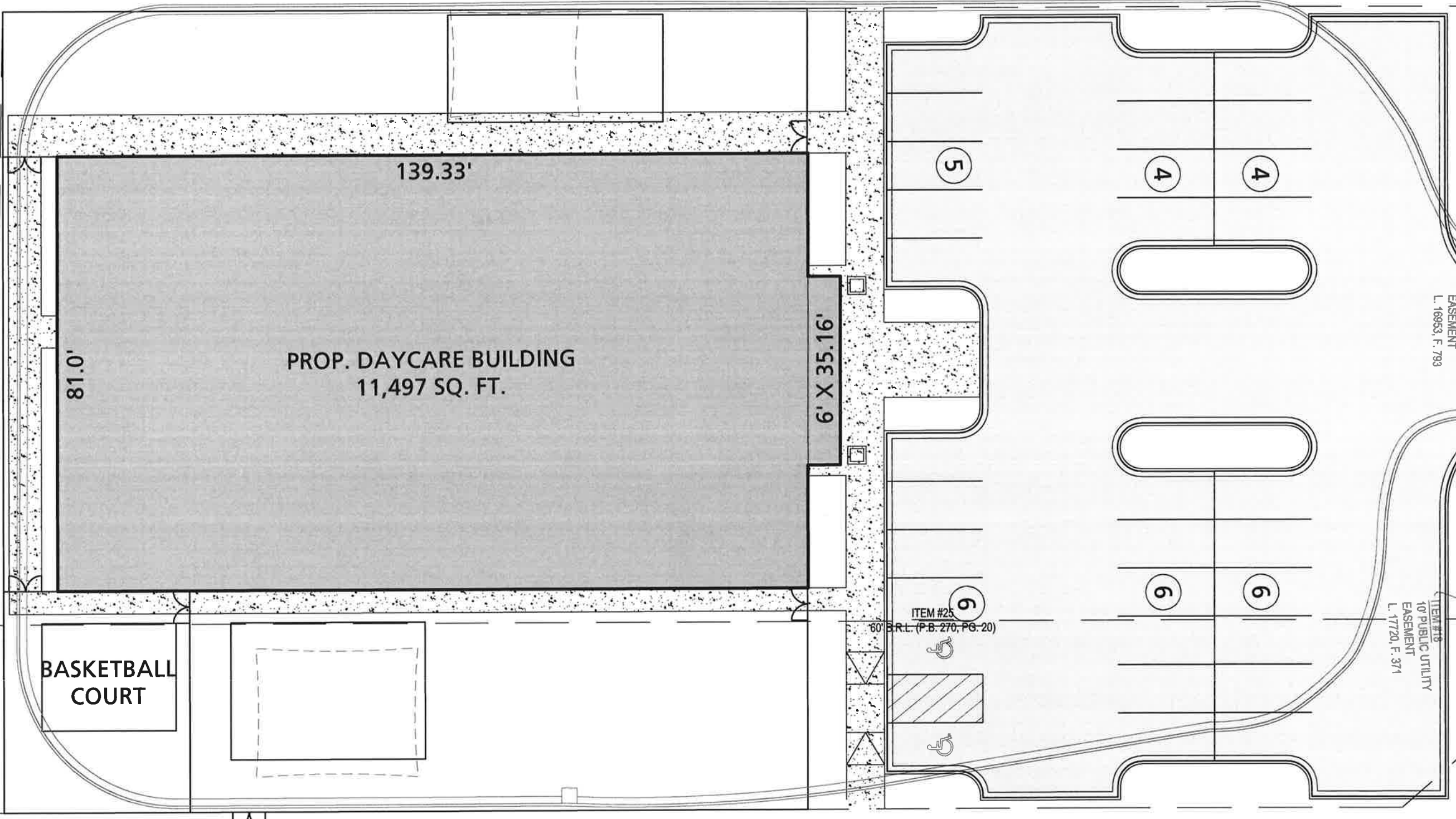
ITEM #10
10' PUBLIC UTILITY
EASEMENT
L. 17720, F. 371

ITEM #15 LIMIT OF DENIAL
OF VEHICULAR ACCESS
S37°38'29"E 50.47'

SCALE: 1"=20'

R=19160.59' L=45.31'
CHD=S03°45'49"W 45.31'

S03°41'45"W 214.14'



PROP. DAYCARE BUILDING
11,497 SQ. FT.

BASKETBALL
COURT

139.33'

81.0'

6' X 35.16'

5

4

4

6

6

6

ITEM #23
60' B.R.L. (P.B. 270, PG. 20)

ITEM #8
5' WIDE UTILITY EASEMENT
L. 224, F. 389

LINK FENCE)

N85°18'06"W 184.21'

SCALE: 1"=20'