

Managed by



CLARION PARTNERS



Westbrook I
8064 Reeder Street,
Lenexa, Kansas

±8,840 Square Feet Available for Lease



BUILDING HIGHLIGHTS

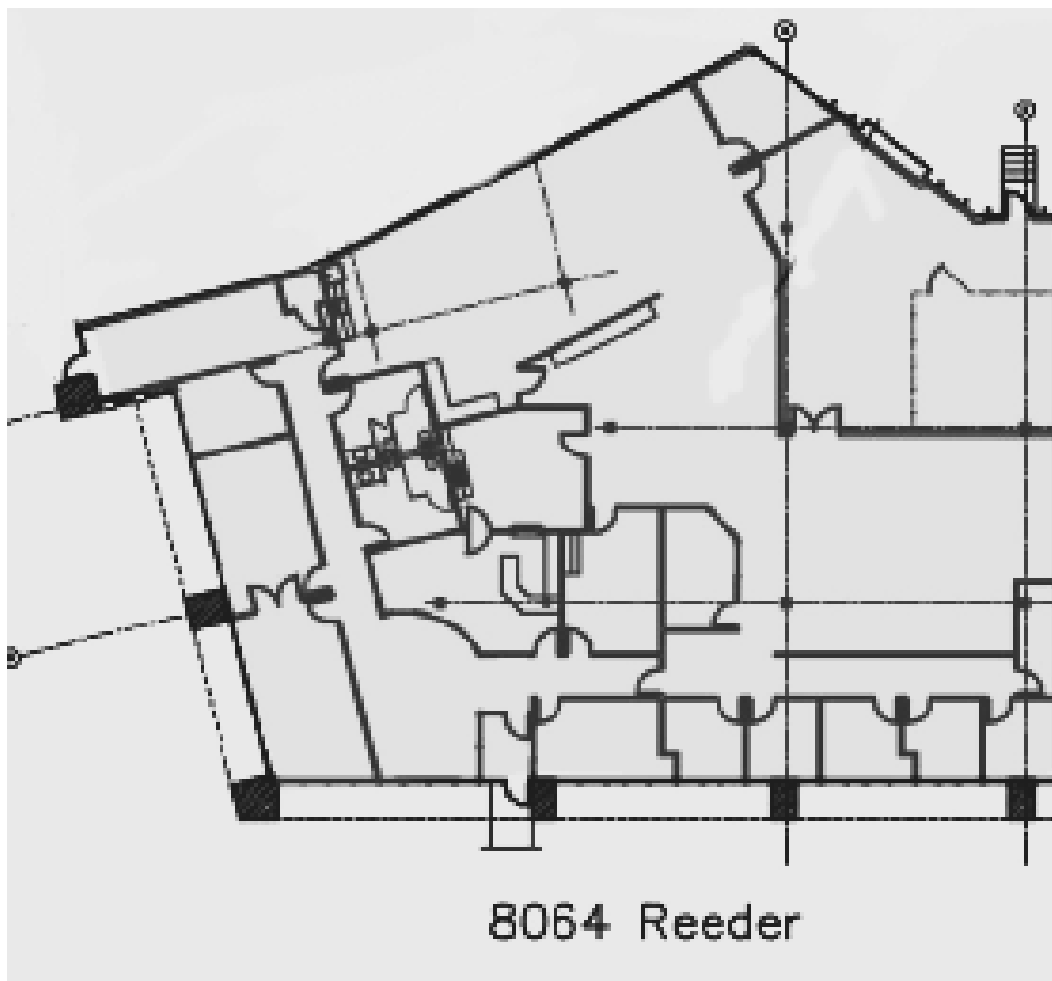
- Office/warehouse
- ±7,715 s.f. office
- ±1,125 s.f. warehouse
- 14' clear height
- One (1) dock-high door
- Wet sprinkler
- Excellent visibility at I-35
- LED lights with motion sensors in warehouse



Managed by



CLARION PARTNERS



Westbrook Business Park is an industrial area located in Lenexa, Kansas. Westbrook Business Park sits in Johnson County with easy access to major highways such as I-35 and I-435.



Kevin Wilkerson, SIOR
913.469.4601
kevin.wilkerson@jll.com

Phil Algrim, SIOR
913.469.4605
phil.algrim@jll.com

Ben Cadenas
913.469.4609
Ben.cadenas@jll.com



CLARION PARTNERS

www.clarionpartners.com

For more information on this opportunity, please contact.