



3975 Lakefield Court | Johns Creek, Georgia 30024

## SPEC SUITES AVAILABLE

32,970 - 40,810 RSF Available (Divisible)

Spec Suites Ranging from:

3,172 SF - 6,492 SF | 4,000 SF - 8,000 SF

(8) 9'X10' Drive-in doors

24' clear height

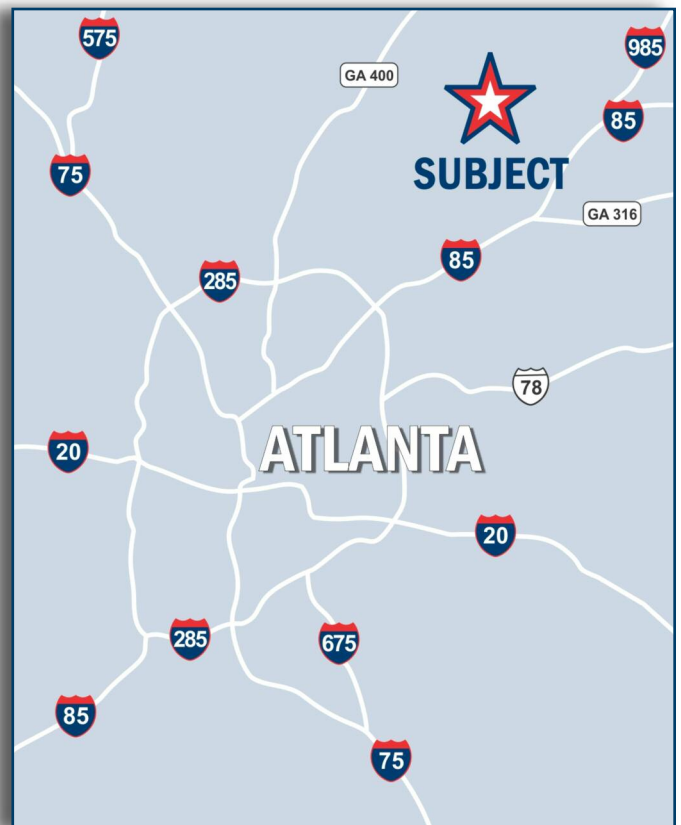
Capability to add ±2 dock high doors

Fully air conditioned (32 tons)

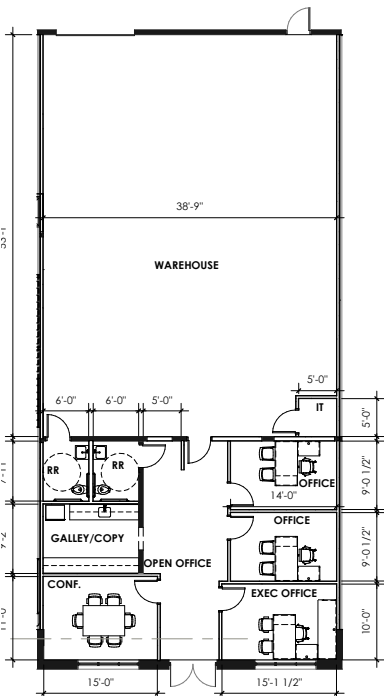
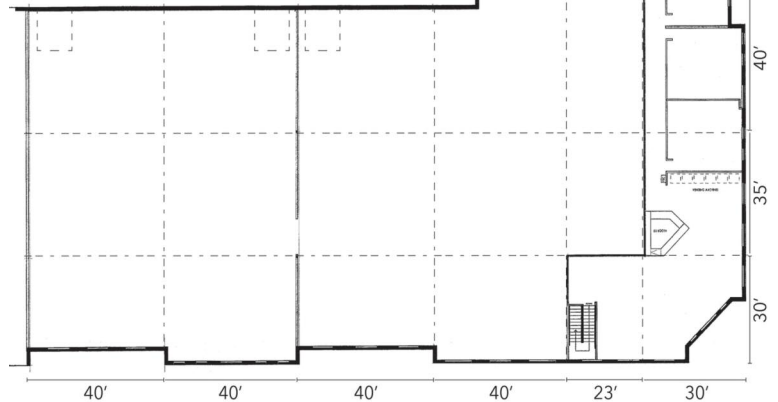
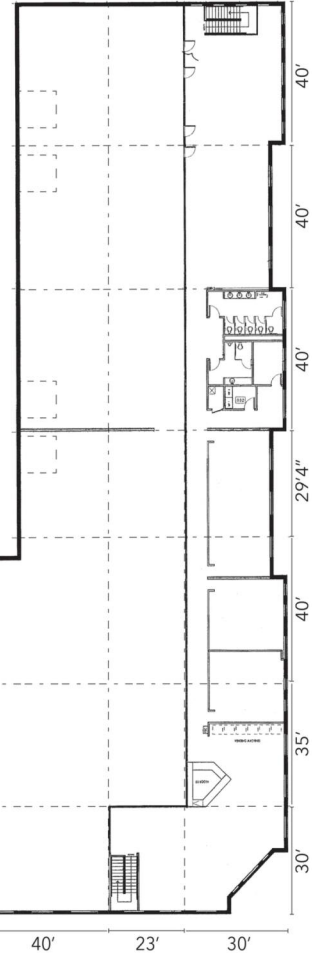
HVLS fans installed

Brick construction

Warehouse/office, manufacturing, assembly uses







FOR MORE INFORMATION PLEASE CONTACT

**DAVID POPE**  
770.729.2812  
dpope@lavista.com