



13597 I-10 E, Schertz, TX 78154

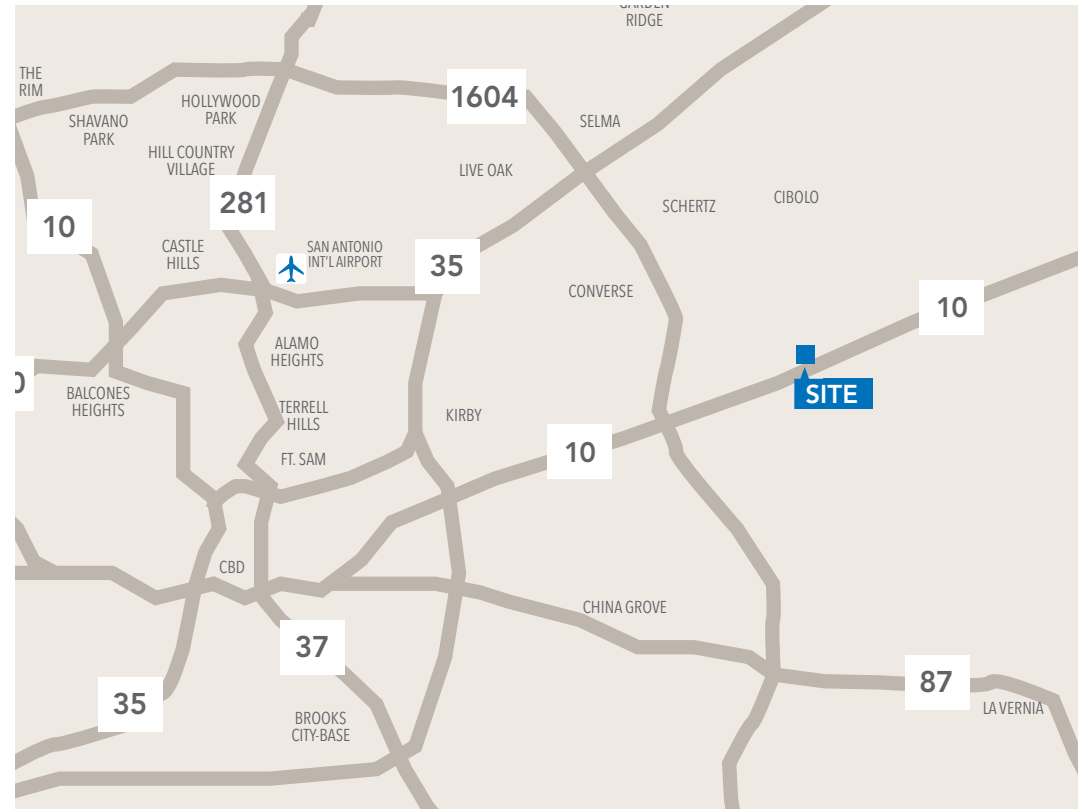
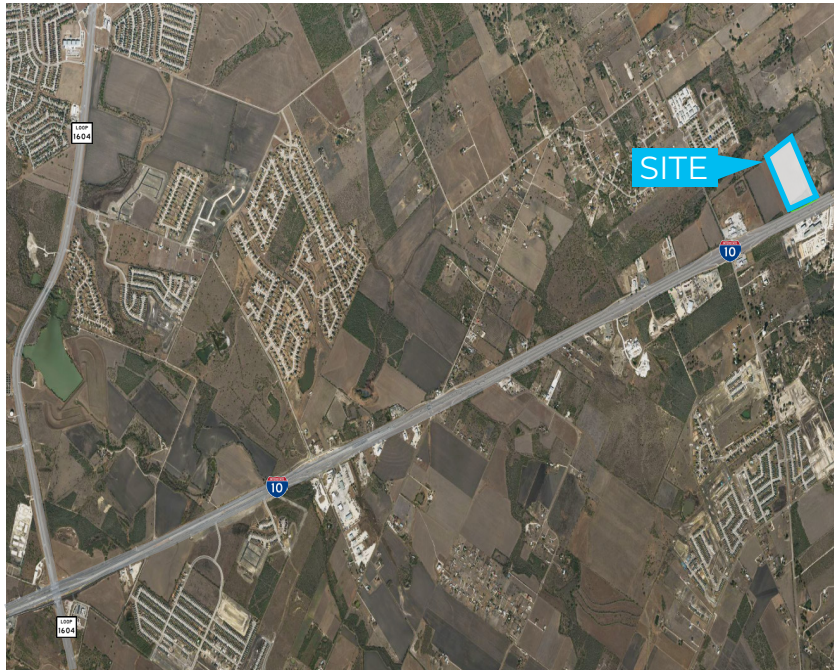
±32 Acres

User or Development Site

# 13597 I-10 E, Schertz, TX 78154 For Sale

## Overview

Lot	±32 Acres
Zoning	N/A County / Schertz ETJ
Frontage	±892 ft
Asking Price	Contact Broker
Utilities	Green Valley SUD



## Demographics

		3 Mile	5 Mile	10 Mile
Population	2023	10,620	30,931	301,194
	2028	13,462	37,565	322,293
Median HH Inc.	2023	\$84,245	\$86,379	\$77,768
	2028	\$98,877	\$101,022	\$86,800
Traffic Count		51,470 VPD		

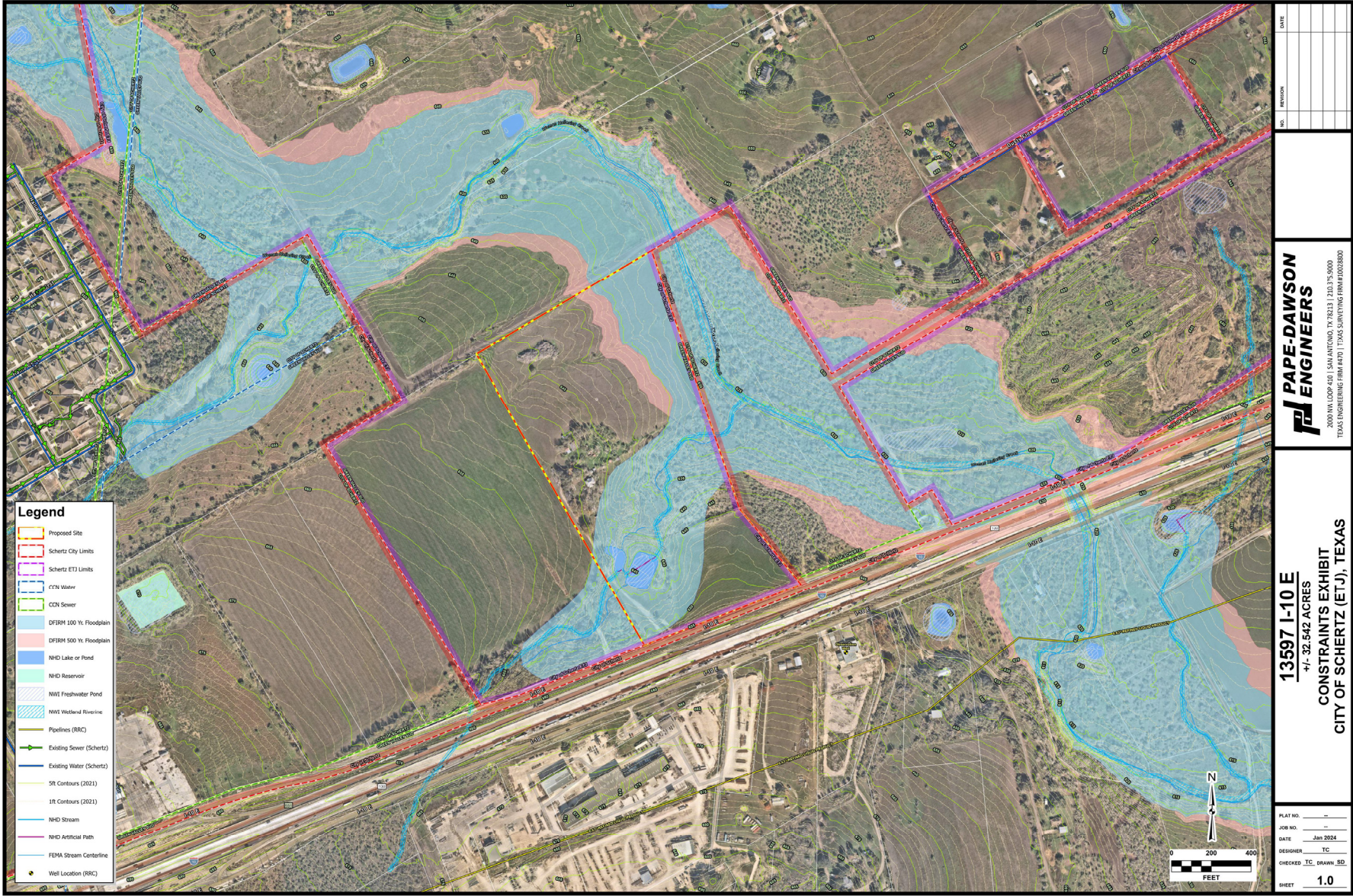
The information provided herein was obtained from sources believed reliable; however, Transwestern makes no guarantees, warranties or representations as to the completeness of accuracy thereof. The presentation of this property is submitted subject to errors, omissions, change of price or conditions, prior to sale or lease, or withdrawal without notice. Copyright © 2024 Transwestern.

# 13597 I-10 E, Schertz, TX 78154

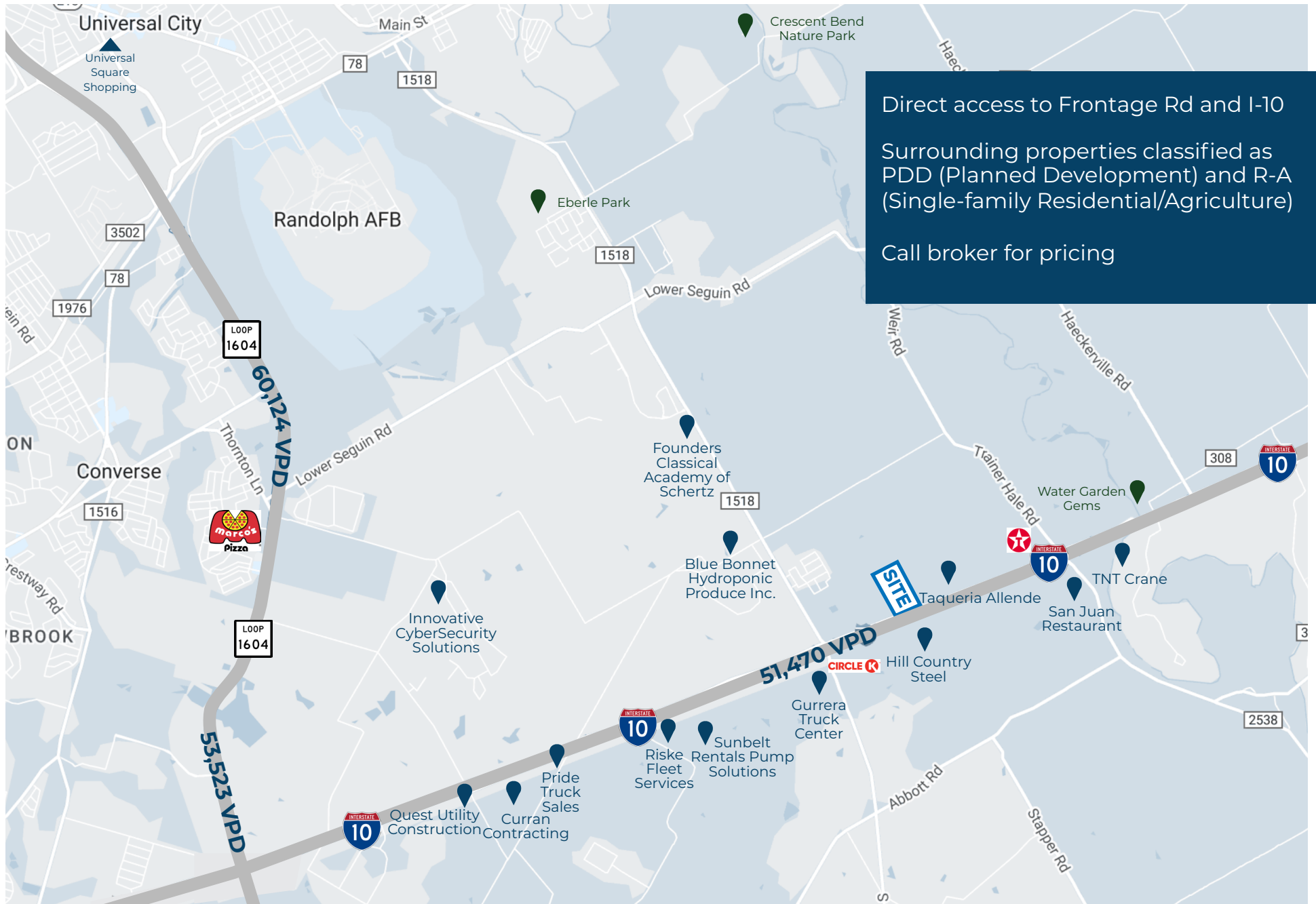
## Utilities & Topography



# 13597 I-10 E, Schertz, TX 78154 Flood Map



Date: Jan 20, 2024, 3:52 PM User: dthomson  
 Plot Path: C:\Users\dthomson\OneDrive\Documents\13597 I-10 E - 32.542 Acres Constraints Map-2408C.dwg 13597 I-10 E - 32.542 Acres  
 This document has been prepared for the client. It is not to be used for any other purpose without the written consent of Pape-Dawson Engineers.



Charlie Weil, SIOR | Vice President | 210.253.2934 | [Charlie.weil@transwestern.com](mailto:Charlie.weil@transwestern.com)