

MURRIETA COMMERCE CENTER

26398 DEERE COURT, SUITE 104, MURRIETA, CA 92562

FOR LEASE

±1,728 SF INDUSTRIAL SPACE



FOR MORE INFORMATION, PLEASE CONTACT:

CAREY PASTOR | Senior Vice President

(951) 297-7434 | cpastor@cbsocalgroup.com

CalDRE License # 01403298



**COLDWELL
BANKER
COMMERCIAL
SC**

Corp. Cal DRE License # 02089395

MURRIETA COMMERCE CENTER

26398 DEERE COURT, SUITE 104, MURRIETA, CA 92562

FOR LEASE
±1,728 SF INDUSTRIAL SPACE

PROPERTY HIGHLIGHTS

- ±1,728 SF Industrial space for lease
- Standard office improvements include: reception, private office, coffee bar w/sink and restroom
- 14' - 16' warehouse clear height
- One (1) 10'w x 12' h grade level roll-up door per unit
- 125 Amp, 120/208v 3phase power supply per unit
- Business Park (BP) Zoning - City of Murrieta



MURRIETA COMMERCE CENTER

26398 DEERE COURT, SUITE 104, MURRIETA, CA 92562

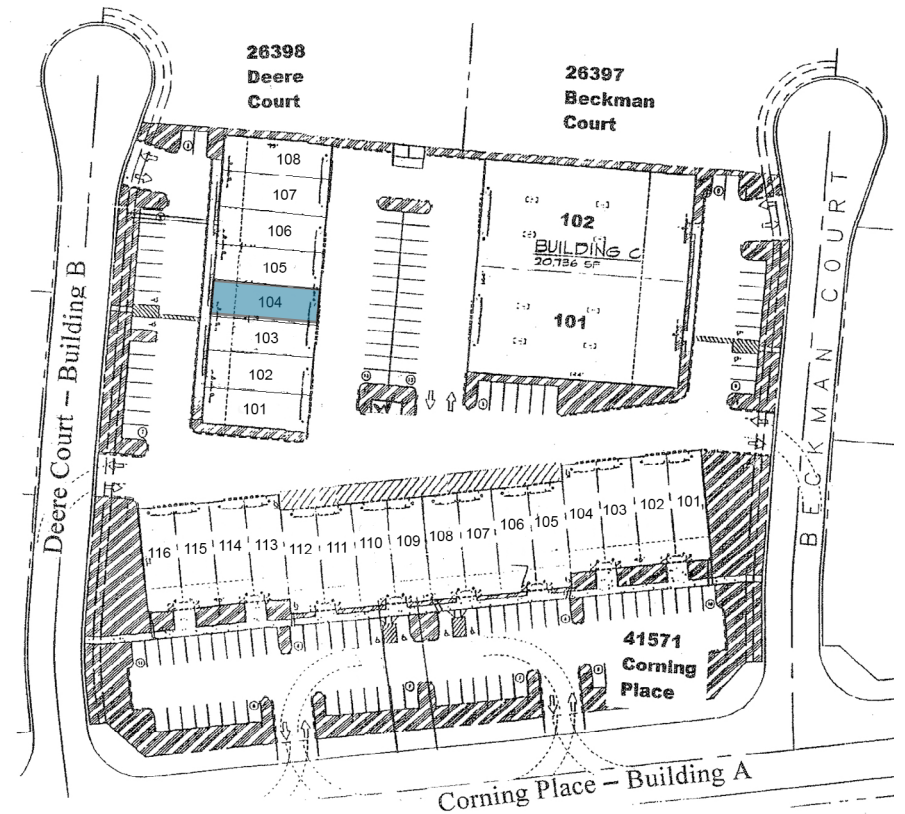
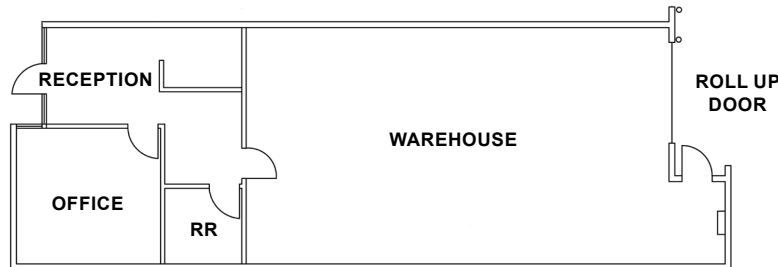
FOR LEASE
±1,728 SF INDUSTRIAL SPACE

AVAILABILITY

UNIT	UNIT SIZE	MONTHLY RENTAL RATE	DESCRIPTION
104	±1,728 SF	\$2,440.00 Base Rent + CAOE*	Reception area, copy room, 1 private office, coffee bar with sink, 1 restroom, balance of space warehouse.

*\$66 Monthly Common Area Operating Expense (CAOE) in addition to monthly base rent

TYPICAL FLOOR PLAN



MURRIETA COMMERCE CENTER

26398 DEERE COURT, SUITE 104, MURRIETA, CA 92562

FOR LEASE
±1,728 SF INDUSTRIAL SPACE



Coldwell Banker Commercial and the Coldwell Banker Commercial Logo are registered service marks licensed to Coldwell Banker Commercial Affiliates. Each Office is Independently Owned and Operated. All information contained herein has been obtained from sources deemed reliable. However, no warranty or guarantee is made as to the accuracy of the information.

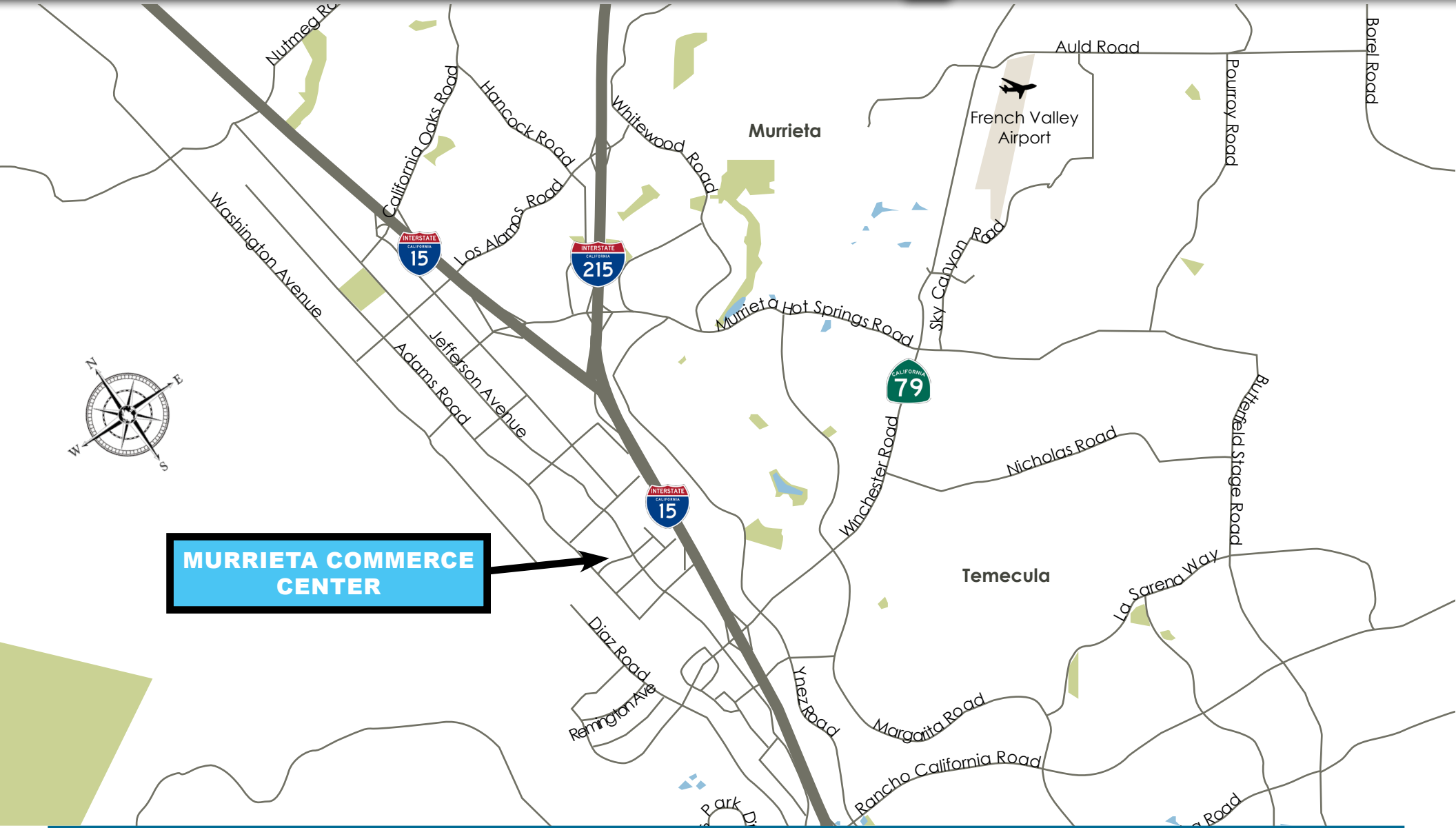
CalDRE License # 02089395

MURRIETA COMMERCE CENTER

26398 DEERE COURT, SUITE 104, MURRIETA, CA 92562

FOR LEASE

±1,728 SF INDUSTRIAL SPACE



MURRIETA COMMERCE CENTER

MURRIETA COMMERCE CENTER

26398 DEERE COURT, SUITE 104, MURRIETA, CA 92562

FOR LEASE
±1,728 SF INDUSTRIAL SPACE



FOR MORE INFORMATION, PLEASE CONTACT:

CAREY PASTOR
Senior Vice President
951.297.7434
cpastor@cbcsocalgroup.com
CalDRE # 01403298

27368 Via Industria | Suite 102
Temecula | California | 92590
t 951.200.7683 | f 951.239.3147
cbcsocalgroup.com

