

# 422

W. 2ND STREET

BONNER SPRINGS, KS



For Lease

±5,456 SF  
Industrial Building



CUSHMAN &  
WAKEFIELD



# // PROPERTY HIGHLIGHTS



**±5,456 SF INDUSTRIAL BUILDING**



**±5,006 SF WAREHOUSE**



**±450 SF OFFICE**



**CLEAR SPAN WAREHOUSE**



**CLEAR HEIGHT 15' - 21'**



**EASY ACCESS TO K-7, K-32, & I-435**



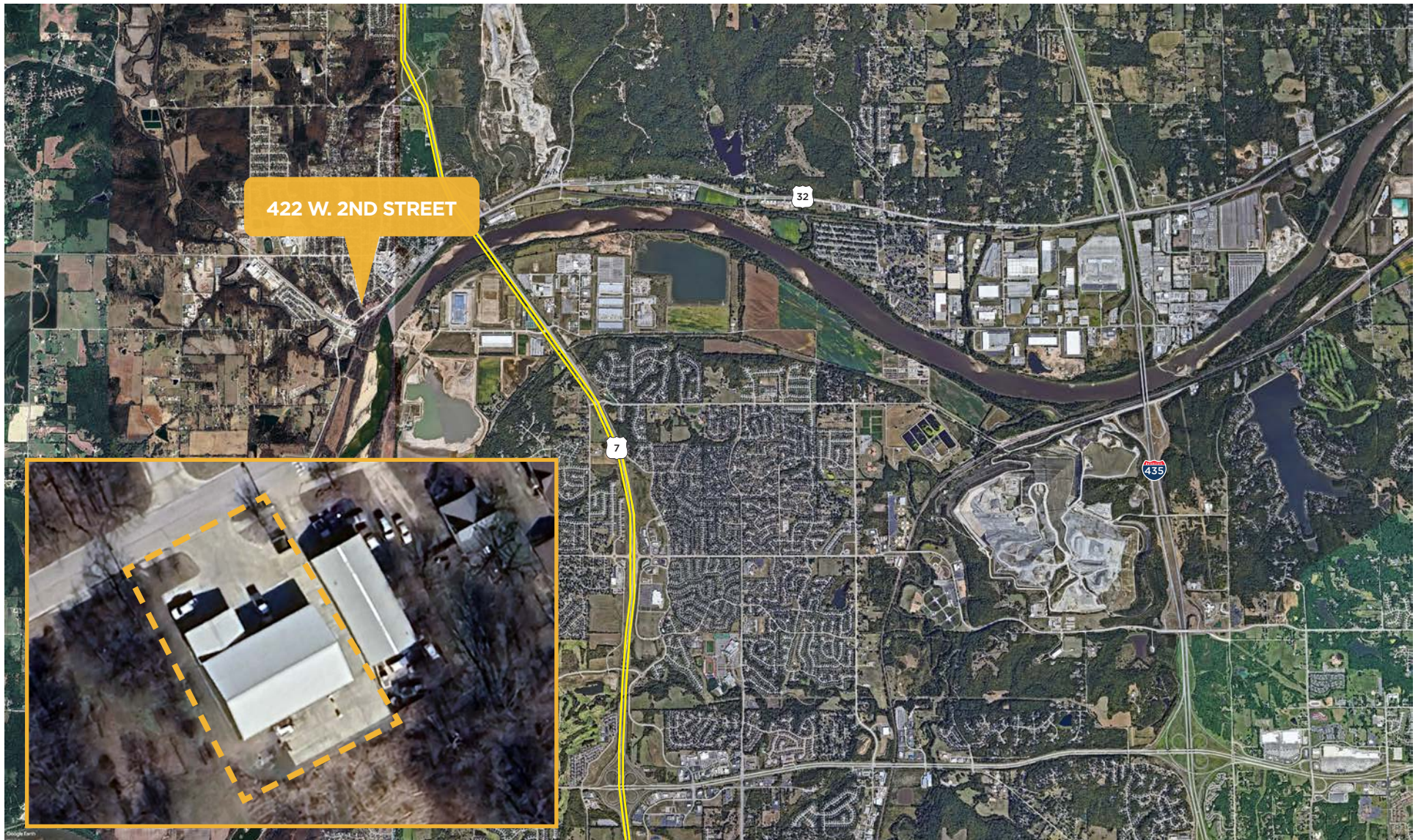
**LEASE RATE: \$4,660/MONTH NNN**



# // PHOTOS









# 422

## W. 2ND STREET

### BONNER SPRINGS, KS



#### CONTACT

MAX PYCIOR  
Associate  
+1 816 412 0253  
[max.pycior@cushwake.com](mailto:max.pycior@cushwake.com)

RACHAEL KIRANE  
Senior Associate  
+1 816 412 0234  
[rachael.kirane@cushwake.com](mailto:rachael.kirane@cushwake.com)



©2026 Cushman & Wakefield. All rights reserved. The information contained in this communication is strictly confidential. This information has been obtained from sources believed to be reliable but has not been verified. NO WARRANTY OR REPRESENTATION, EXPRESS OR IMPLIED, IS MADE AS TO THE CONDITION OF THE PROPERTY (OR PROPERTIES) REFERENCED HEREIN OR AS TO THE ACCURACY OR COMPLETENESS OF THE INFORMATION CONTAINED HEREIN, AND SAME IS SUBMITTED SUBJECT TO ERRORS, OMISSIONS, CHANGE OF PRICE, RENTAL OR OTHER CONDITIONS, WITHDRAWAL WITHOUT NOTICE, AND TO ANY SPECIAL LISTING CONDITIONS IMPOSED BY THE PROPERTY OWNER(S). ANY PROJECTIONS, OPINIONS OR ESTIMATES ARE SUBJECT TO UNCERTAINTY AND DO NOT SIGNIFY CURRENT OR FUTURE PROPERTY PERFORMANCE.