

FOR LEASE

Oakland Park Warehouse

559 NE 42ND STREET

Oakland Park, FL 33334

PRESENTED BY:

STEVE DAVIS

C: 954.650.7824
steve@svncr.com

KEITH KIDWELL, SIOR, CCIM

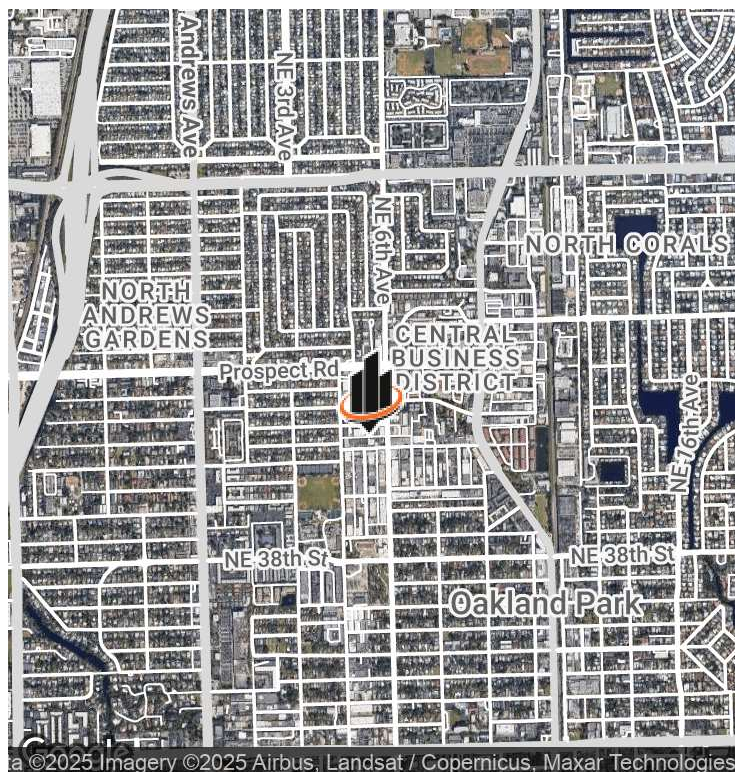
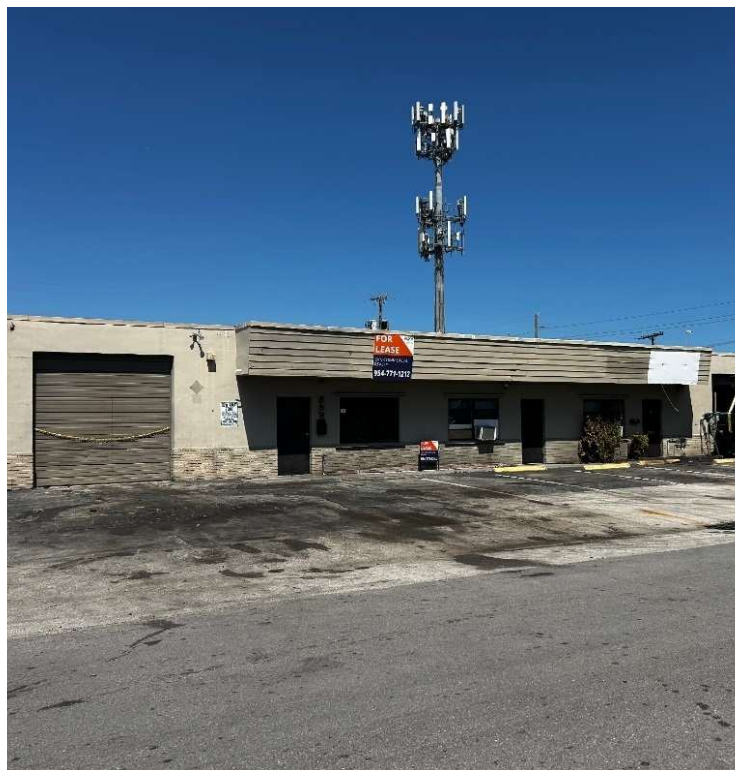
C: 954.234.8777
keith@svncr.com

LES BYRON, SIOR, CCIM

C: 954.401.4713
les@svncr.com



PROPERTY SUMMARY



OFFERING SUMMARY

| | |
|----------------|-----------------|
| LEASE RATE: | \$23.00/PSF (G) |
| BUILDING SIZE: | 7,360 SF |
| BAY 1: | 3,040 SF |
| AVAILABLE: | March 1st, 2025 |
| ZONING: | I-1 |
| MARKET: | Broward |
| SUBMARKET: | Oakland Park |
| APN: | 4942 22 19 0600 |

PROPERTY OVERVIEW

Great small bay warehouse in the heart of Oakland Park. New ownership has recently renovated the building. Including paint & LED lighting. Excellent East Broward location, easy access to I-95.

PROPERTY HIGHLIGHTS

- 13' 4" Clear Height
- Grade Level OH Doors: 10' x 10'
- Drive Thru Bay
- Air Conditioned Office Space
- Bay Features Rear Yard Area
- Asking Rent = \$5,827 per Month

STEVE DAVIS
C: 954.650.7824
steve@svncr.com

KEITH KIDWELL, SIOR, CCIM
C: 954.234.8777
keith@svncr.com

LES BYRON, SIOR, CCIM
C: 954.401.4713
les@svncr.com