



ALPHA
EQUITY
REALTY & MANAGEMENT

SPACE AVAILABLE FOR LEASE



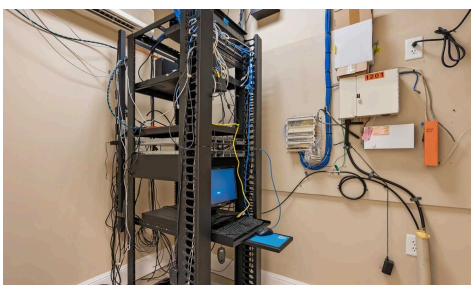
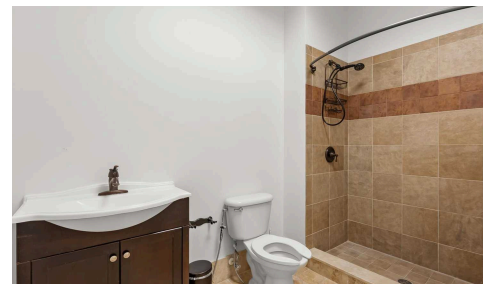
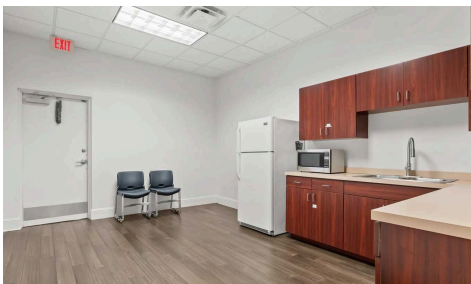
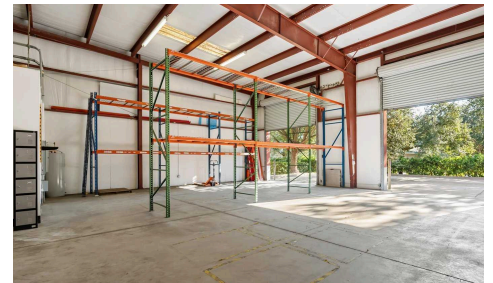
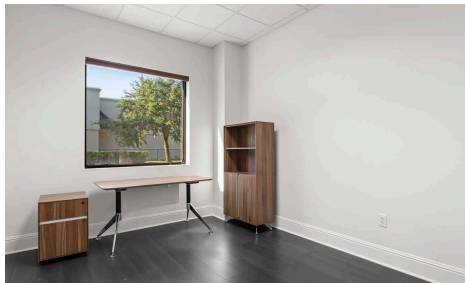
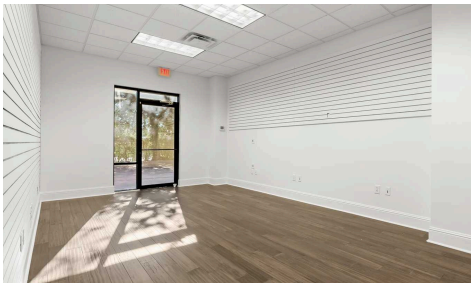
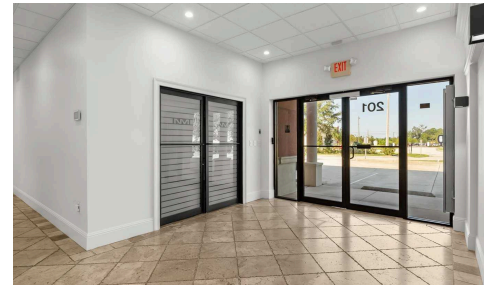
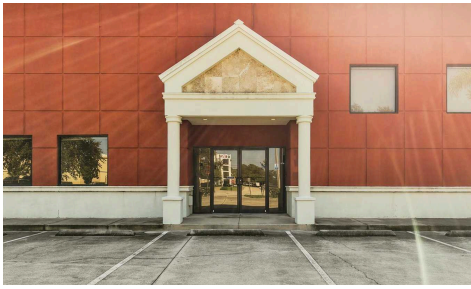
201 Specialty Point,
Sanford, FL 32771

Pricing:

\$16 /SF NNN

PROPERTY HIGHLIGHTS:

- α Class A ~6k SF Office / Flex In Central Park / Upsala Business Park
- α Office Features: 9 private offices, conference room, break room, command center, 3 toilets, 1 shower
- α 2K+ SF Warehouse: 18' clear & two 16' grade-level doors
- α Premium Finishes: Travertine tile floors, sleek lighting, modern touches
- α 19 Parking Spaces + EV Charging Station
- α Plug-and-play



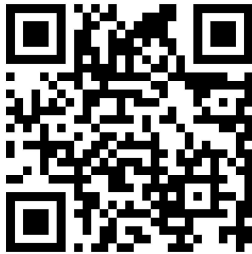
Mac Jaffer, CCIM: 516-554-5775
Tati K: 407-668-8534
leasing@recfl.com

**201 Specialty Point, Sanford,
 FL 32771**

Alpha Equity does not represent or warranty the accuracy of the information contained herein. Such information has been given to Alpha Equity by the owner of the property or obtained from other sources deemed reliable. Alpha Equity has no reason to doubt its accuracy, but does not guarantee it. The reviewers(s) of this document is encouraged to perform their own research for their own purposes to verify the dependability of the information being reviewed. All information should be verified by reviewer(s) prior to purchase or lease. Unless otherwise noted, the property is being offered as-is, where is, with all faults.



201 Specialty Point, Sanford, FL 32771



Watch Video



Virtual Tour

Mac Jaffer, CCIM: 516-554-5775
Tati K: 407-668-8534
leasing@recfl.com

**201 Specialty Point, Sanford,
 FL 32771**

Alpha Equity does not represent or warranty the accuracy of the information contained herein. Such information has been given to Alpha Equity by the owner of the property or obtained from other sources deemed reliable. Alpha Equity has no reason to doubt its accuracy, but does not guarantee it. The reviewers(s) of this document is encouraged to perform their own research for their own purposes to verify the dependability of the information being reviewed. All information should be verified by reviewer(s) prior to purchase or lease. Unless otherwise noted, the property is being offered as-is, where is, with all faults.

201 Specialty Point, Sanford, FL 32771



**ALPHA
EQUITY**
REALTY & MANAGEMENT

Alpha Equity Realty & Management
1525 International Parkway,
Suite 4071, Lake Mary FL 32746
www.recfl.com

MAC JAFFER, CCIM
516-554-5775

Tati K
407-668-8534

leasing@recfl.com

