



FOR LEASE

9,548 SF Walgreens Space

141 Kearny St | San Francisco, CA 94108



Walgreens Building

141 Kearny St | San Francisco, CA 94108



9,548 SF

Size

8/1/2031

Lease End Date

\$165,000/yr MG

Asking

ABOUT THE PROPERTY

All offers are subject to approval by Walgreens Real Estate Committee.

- Size: 13,400 SF
 - Ground: 7,455 SF
 - Mezzanine: 3,100 SF
 - Basement: 2,845 SF
- Prime Financial District location
- Close proximity to notable flagship stores and boutiques, hotels, restaurants and corporate offices
- Well served by public transportation with Montgomery BART Station 1 block away and the T Third Subway Union Square Station 2 blocks away

NEARBY RETAILERS



TRAFFIC COUNTS

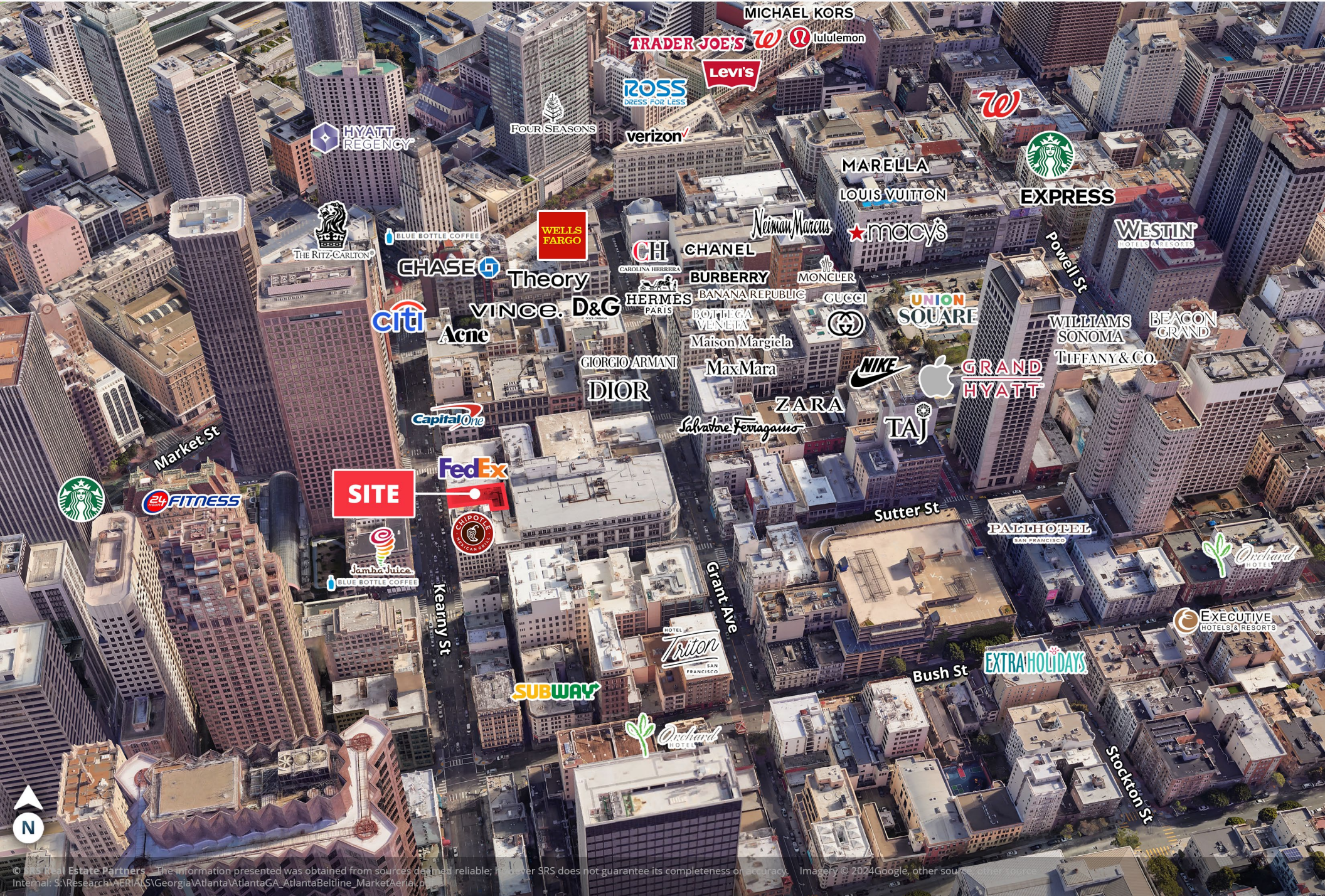
Kearny St
Post St

Year: 2023 | Source: Placer Labs, Inc.

16,146 VPD
8,369 VPD

Walgreens Building

141 Kearny St | San Francisco, CA 94108



HYATT
REGENCY

FOUR SEASONS

ROSS
DRESS FOR LESS

Levi's

verizon

MICHAEL KORS

TRADER JOE'S

lululemon

THE RITZ-CARLTON

BLUE BOTTLE COFFEE

WELLS
FARGO

CHASE

Theory

CH

CHANEL

Neiman Marcus

MARELLA
LOUIS VUITTON

Starbucks

EXPRESS

WESTIN
HOTELS & RESORTS

citi

Aeone

VINCE. D&G

HERMES
PARIS

BURBERRY

MONCLER

GUCCI

UNION
SQUARE

WILLIAMS
SONOMA

BEACON
GRAND

TIFFANY & CO.

GIORGIO ARMANI

MaxMara

DIOR

Salvatore Ferragamo

ZARA

NIKE

Apple

GRAND
HYATT

Sutter St

PATHHOTEL
SAN FRANCISCO

Orchard
WORK

EXECUTIVE
HOTELS & RESORTS

EXTRA HOLIDAYS

Bush St

Stockton St

Grant Ave

Kearny St

Market St

SITE

FedEx

CHIPOTLE
MEXICAN GRILL

Jamba Juice

BLUE BOTTLE COFFEE

SUBWAY

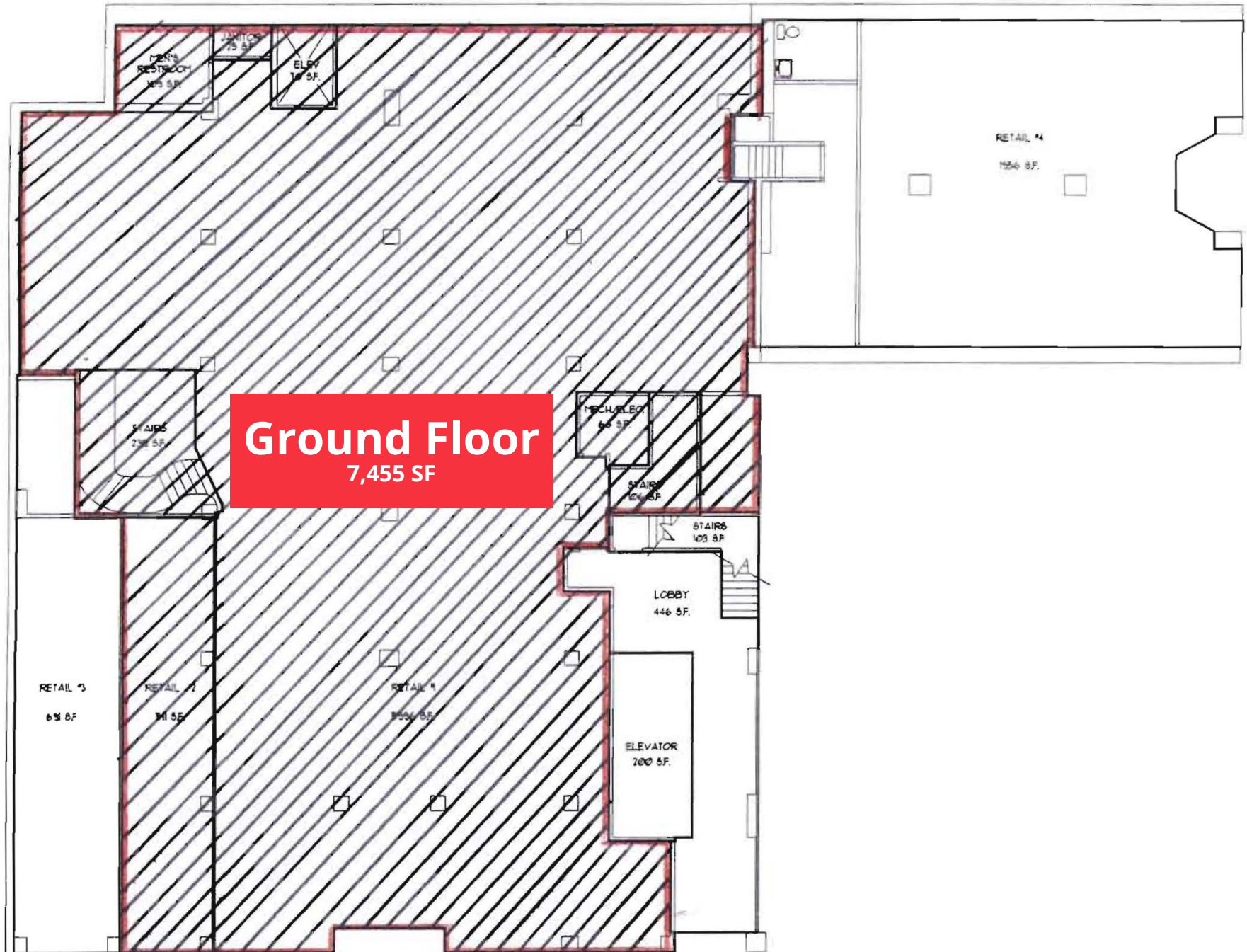
Orchard
HOTEL

TRITON
SAN FRANCISCO



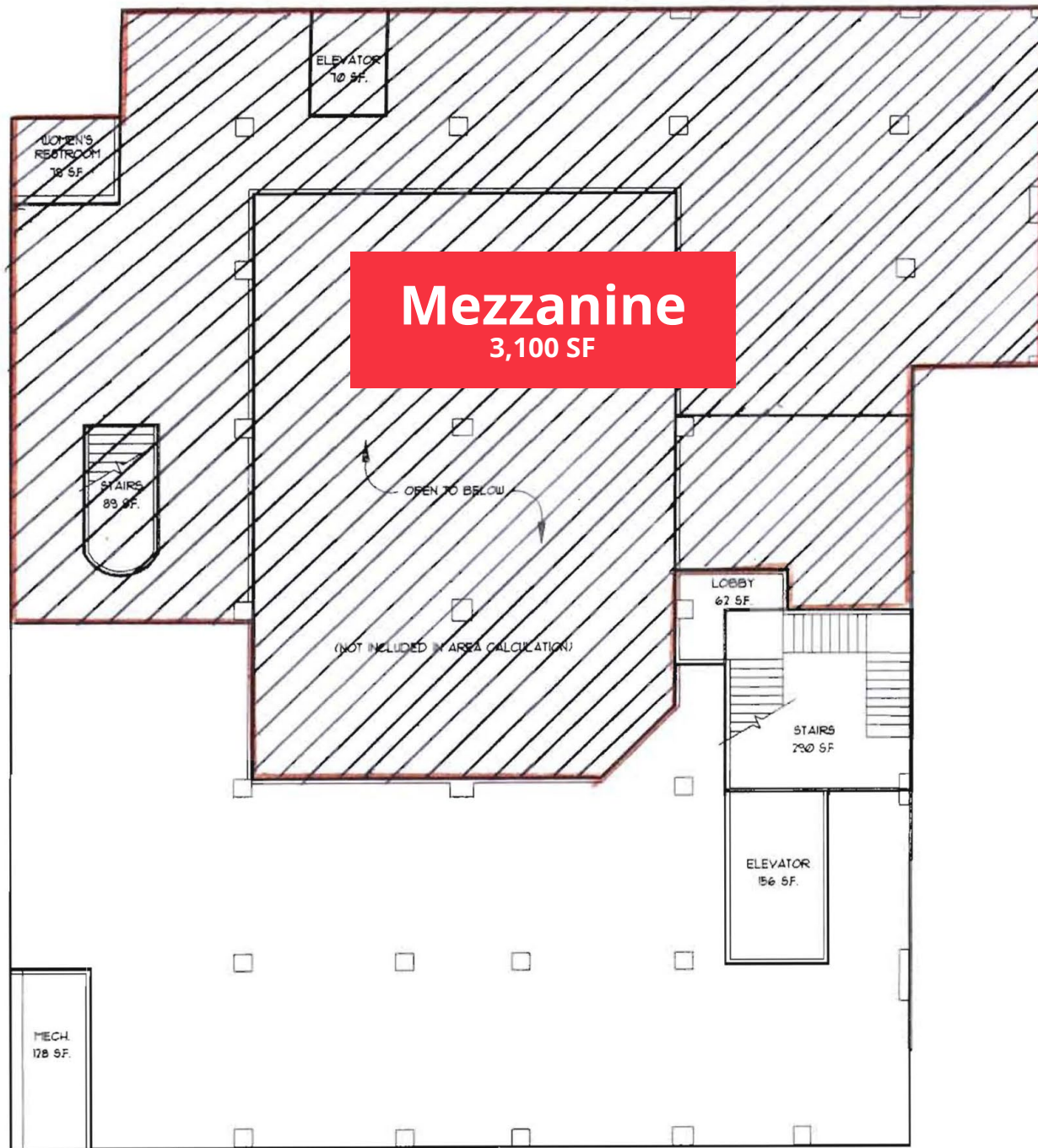
Walgreens Building

141 Kearny St | San Francisco, CA 94108



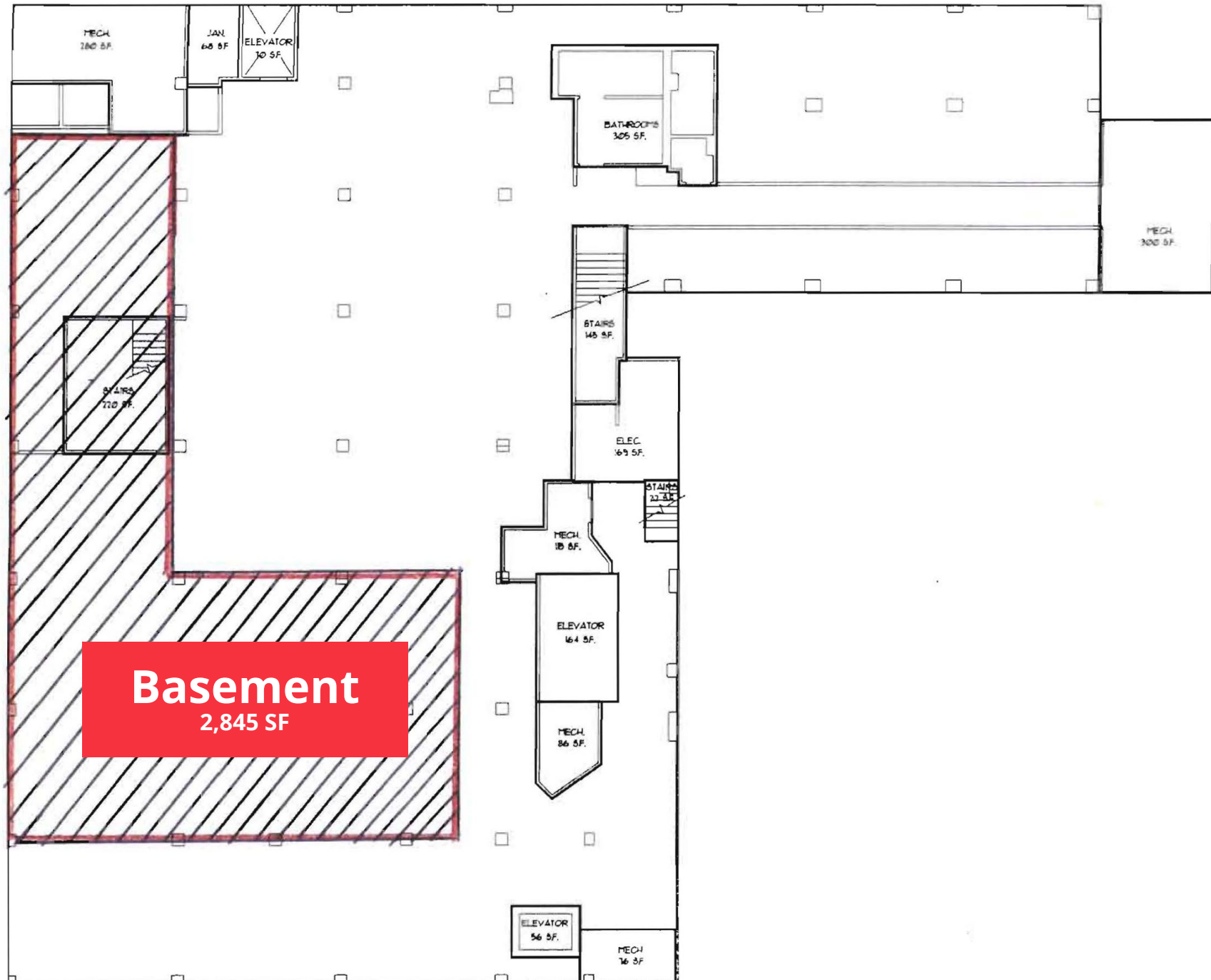
Walgreens Building

141 Kearny St | San Francisco, CA 94108



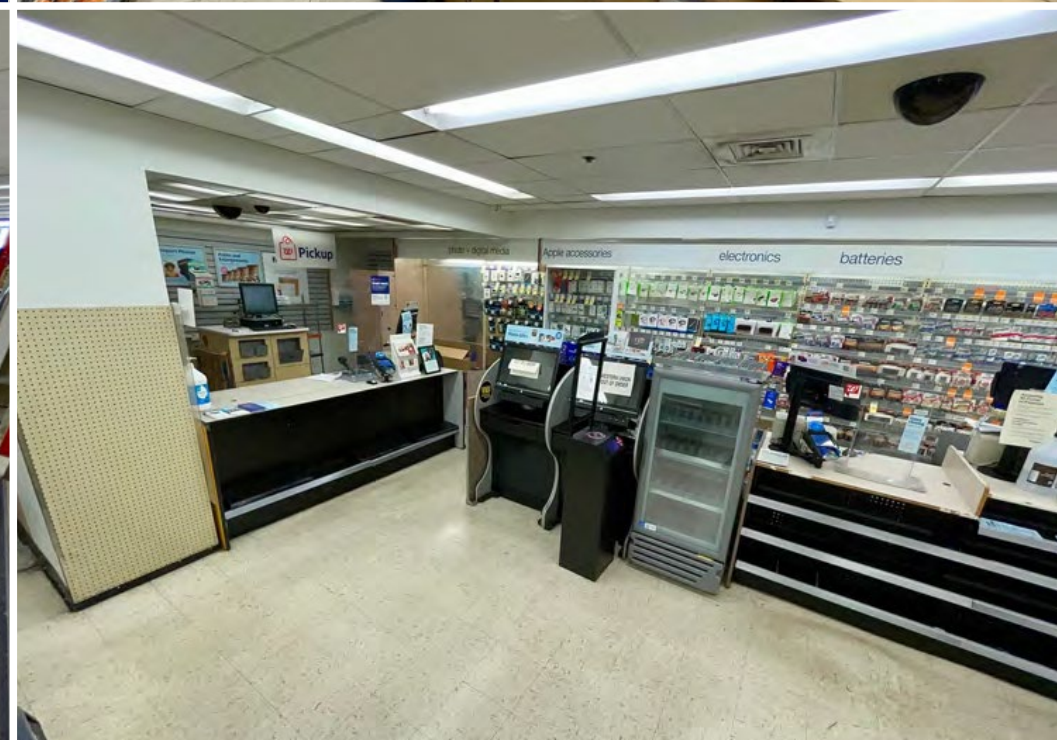
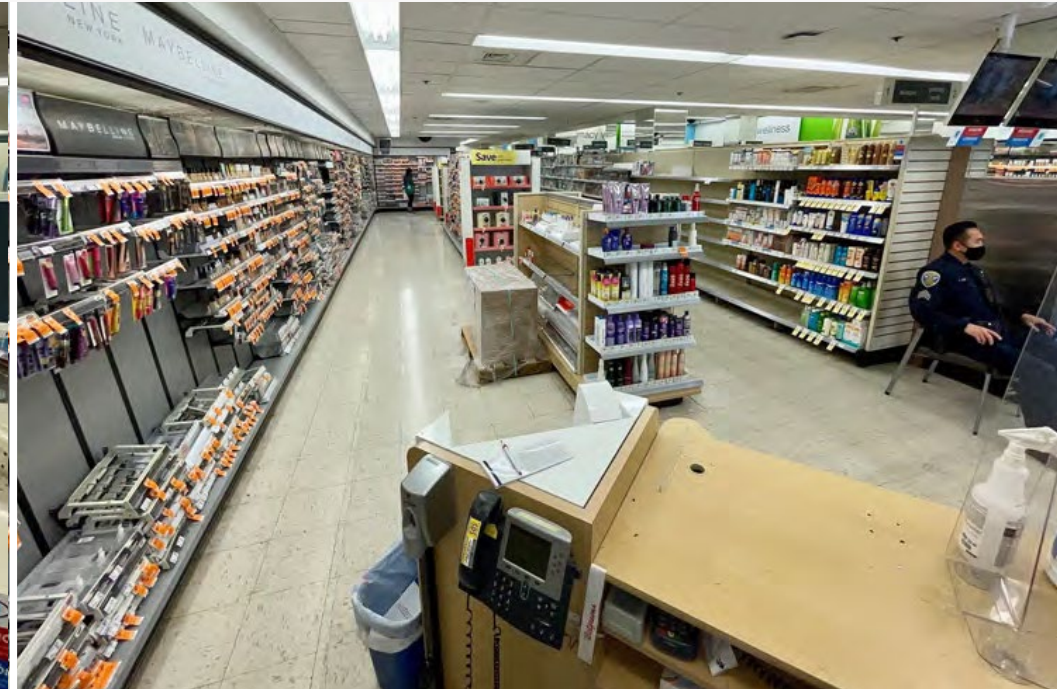
Walgreens Building

141 Kearny St | San Francisco, CA 94108



Walgreens Building

141 Kearny St | San Francisco, CA 94108



Walgreens Building

141 Kearny St | San Francisco, CA 94108



Walgreens Building

141 Kearny St | San Francisco, CA 94108



DEMOGRAPHIC HIGHLIGHTS

Population

	1 Mile	3 Miles	5 Miles
2024 Estimated Population	133,051	412,726	663,311
2029 Projected Population	136,881	423,788	676,345
Projected Annual Growth 2024 to 2029	0.57%	0.53%	0.39%

2024 Daytime Population

Daytime Population	370,612	706,002	933,409
Workers	323,103	579,991	710,751
Residents	47,509	126,011	222,658

2024 Income

Average Household Income	\$155,117	\$204,028	\$205,077
Median Household Income	\$91,510	\$144,631	\$148,123

Households & Growth

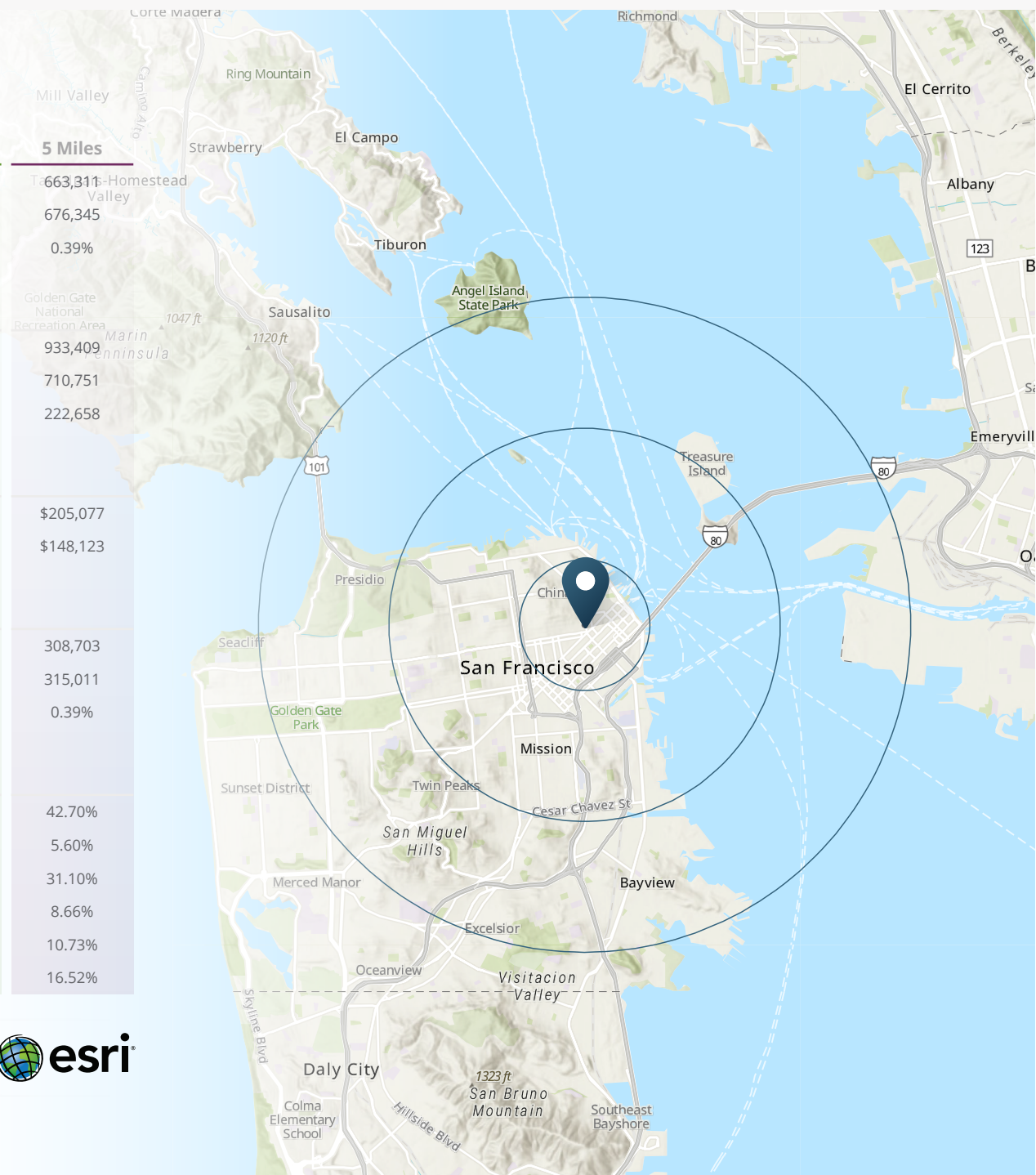
2024 Estimated Households	72,723	210,929	308,703
2029 Projected Households	75,006	216,680	315,011
Projected Annual Growth 2024 to 2029	0.62%	0.60%	0.39%

2024 Race & Ethnicity

White	34.61%	46.17%	42.70%
Black or African American	6.37%	5.52%	5.60%
Asian or Pacific Islander	41.05%	28.31%	31.10%
Other Race	8.03%	8.33%	8.66%
Two or More Races	8.52%	10.45%	10.73%
Hispanic	14.62%	16.00%	16.52%

> **Want more?** Contact us for a complete demographic, foot-traffic, and mobile data insights report.

SOURCE





SRS Real Estate Partners
150 California Street, 14th Fl
San Francisco, CA 94111
415.908.4930

Matthew D. Alexander
EVP & Principal
415.908.4938
matt.alexander@srsre.com
CA License No. 00883993

Sarah D. Edwards
First Vice President
408.216.2322
sarah.edwards@srsre.com
CA License No. 01297272

SRSRE.COM

© SRS Real Estate Partners

The information presented was obtained from sources deemed reliable;
however SRS Real Estate Partners does not guarantee its completeness or accuracy.