

# 1356

## Harrison Street

san francisco, CA 94103

TCN  
WORLDWIDE  
REAL ESTATE SERVICES

# For Lease

# \$5,800/Month

Industrial Space

**Kyle Pasiecznik**  
kyle@starboardcre.com  
650-678-4669

**CRAIG HANSSON**  
craig@starboardcre.com  
415-710-7768



**STARBOARD CRE**  
LOCAL • INDEPENDENT • ENTREPRENEURIAL

# Building Summary

<b>Address:</b>	1356 Harrison St
<b>Square Footage:</b>	±3,900 SF
<b>Ground Floor:</b>	±2,250 SF
<b>Space Type:</b>	Industrial Space
<b>Zoning:</b>	WMUG
<b>Built:</b>	1923
<b>Asking Price:</b>	\$5,800 per month



## Versatile Use Areas

Warehouse, apartment, mezzanine, basement



## Second Floor Apartment

Non-conforming 700 SF space



## Natural Skylight Light

Multiple skylights installed



## Sub-Ground Basement

300 SF storage level



## Bonus Mezzanine Room

620 SF with low ceiling



## Kitchen & Bathroom

Full Kitchen & Full Bathroom



## Onsite Laundry Room

Laundry facility available



## Roll-up Door Access

Easy loading/unloading access



# Images | Ground Floor



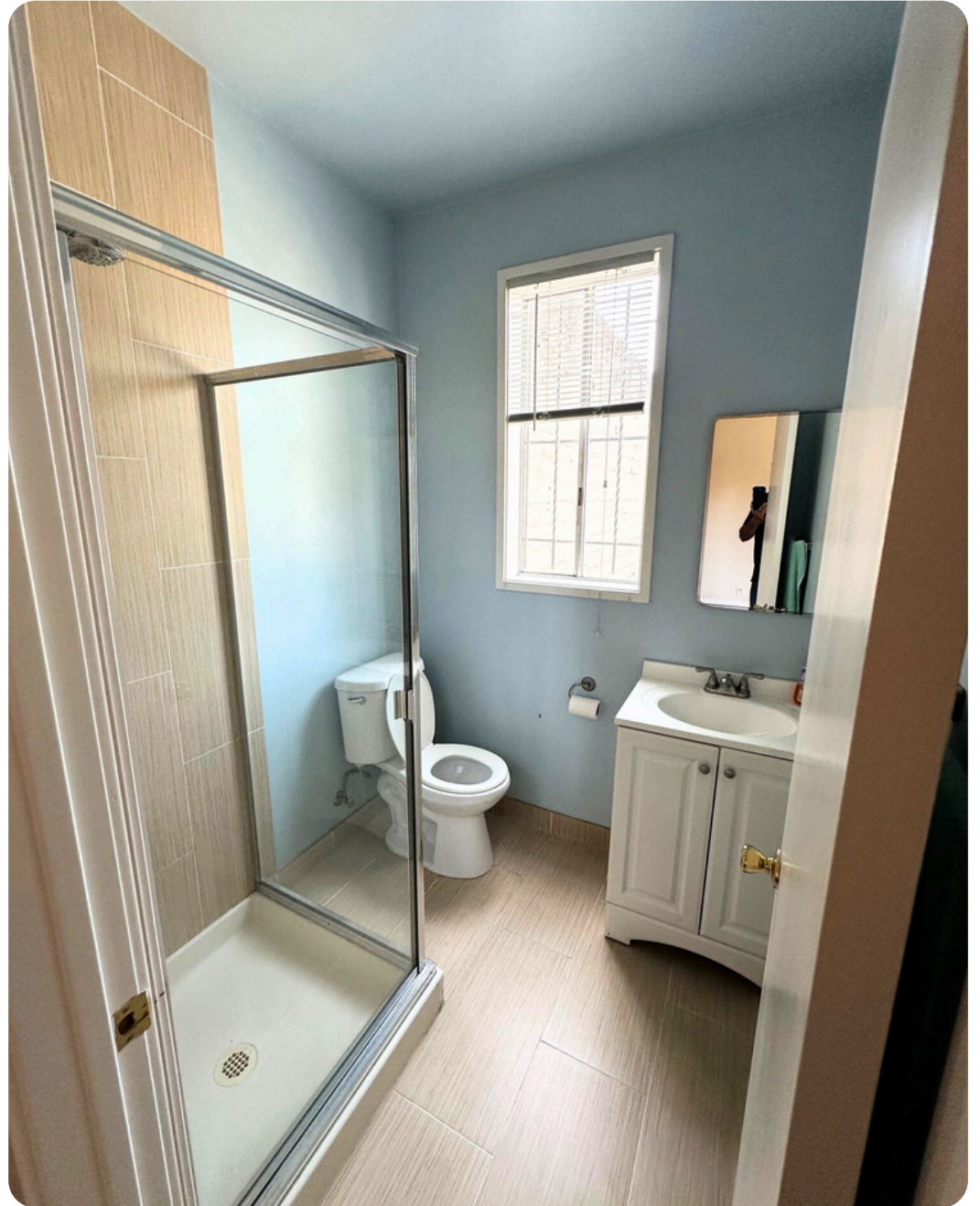


# Images | Ground Floor





# Images | 2<sup>nd</sup> Floor





# Images | 2<sup>nd</sup> Floor

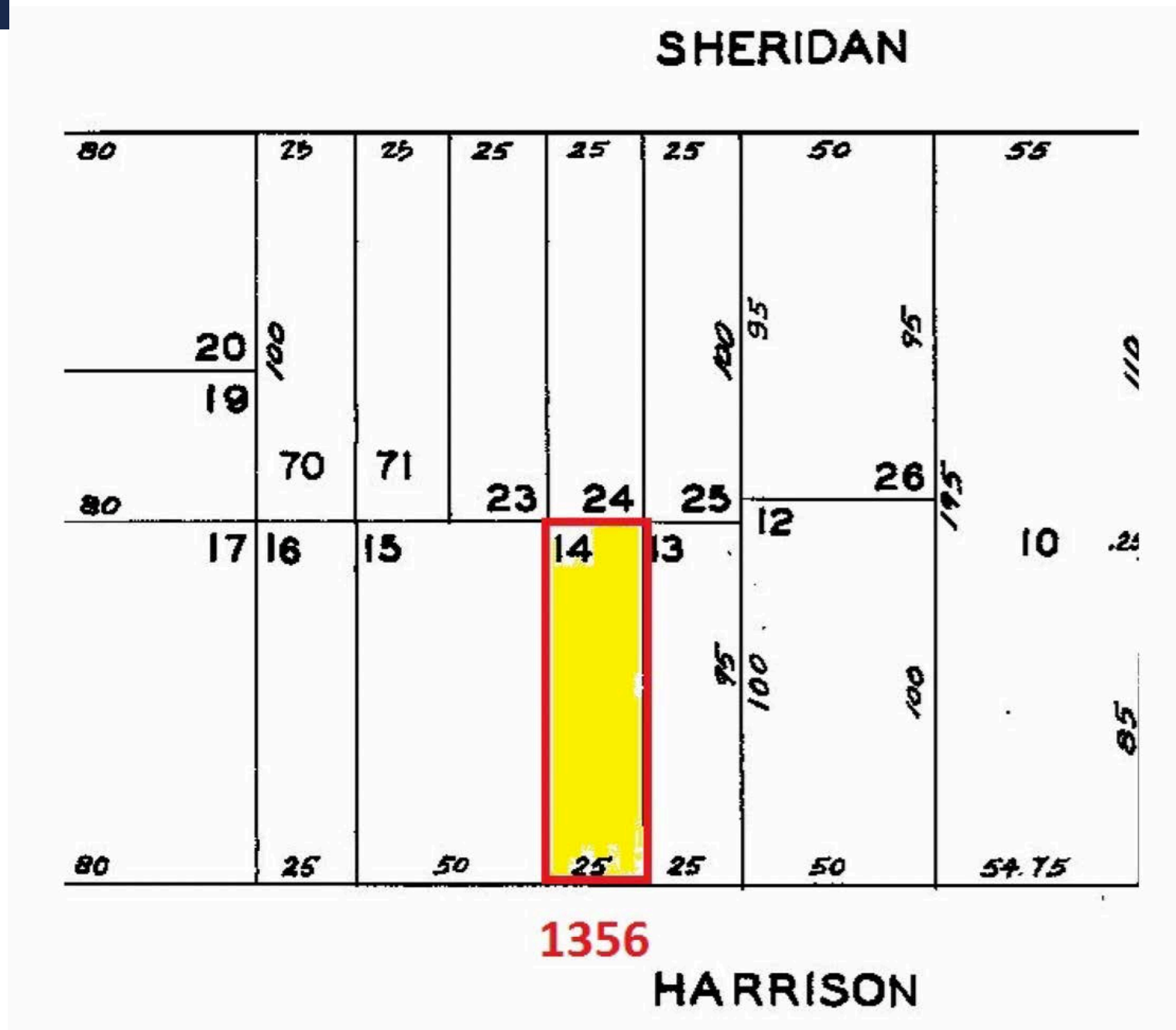




# Images | 2<sup>nd</sup> Floor



# Parcel





# Team

---



## Kyle Pasiecznik

Leasing & Sales Associate

[kyle@starboardcre.com](mailto:kyle@starboardcre.com)

CELL: 650.678.4669

CA DRE # 02074330

Call

View Profile



## Craig Hansson

Vice President

[craig@starboardcre.com](mailto:craig@starboardcre.com)

CELL: 415.710.7768

CA DRE #01841643

Call

View Profile



STARBOARD CRE  
LOCAL • INDEPENDENT • ENTREPRENEURIAL



**STARBOARD CRE**  
LOCAL • INDEPENDENT • ENTREPRENEURIAL

STARBOARDCRE.COM  
OFC. PHONE 415.765.6900  
49 POWELL STREET, SAN FRANCISCO, CA 94102



## Unique Vision

We see what others miss

## Local Market Leader

No one knows Northern  
California like we do

## Full-Service Firm

We do it all

Locally based, and technology-forward, our brokers are highly qualified experts backed by a full-service, in-house support team who understand the intricacies of San Francisco real estate. Starboard CRE brings decades of brokerage experience representing over 600 million square feet of space with an aggregate lease value of over 10 billion and investments sold over 3 billion.

**CA DRE# 01103056**

**TCN**  
WORLDWIDE  
REAL ESTATE SERVICES

**AREA**  
ASSOCIATED REALTY OF THE AMERICAS