



**CUSHMAN &
WAKEFIELD**



1400 COMPUTER DRIVE

WESTBOROUGH, MA 01581



**FIRST CLASS OFFICE SPACE AVAILABLE FOR LEASE
2,725-28,000 SF**

1400 COMPUTER DRIVE



PROPERTY FEATURES

1400 Computer Drive is a top-tier quality, three-story, 72,291 SF first class office building on the Route 9 corridor in Westborough.

Positioned on an elevated site, 1400 Computer Drive has exceptional high profile visibility and great corporate signage opportunities. Flexible and efficient floor plates accommodate single and multi-tenant users.

Minutes from I-495 and the Mass Pike, it features a sun lit two-story atrium, superior finishes, a newly renovated fitness room with lockers and showers, modern tenant lounge, basement-level storage, and abundant parking. It is conveniently located in the midst of numerous restaurants, retail stores, and hotels.

Contemporary and convenient, 1400 Computer Drive is ideal for high tech and business tenants. This first-class building's features, location and visibility make it best in class.

AVAILABILITIES

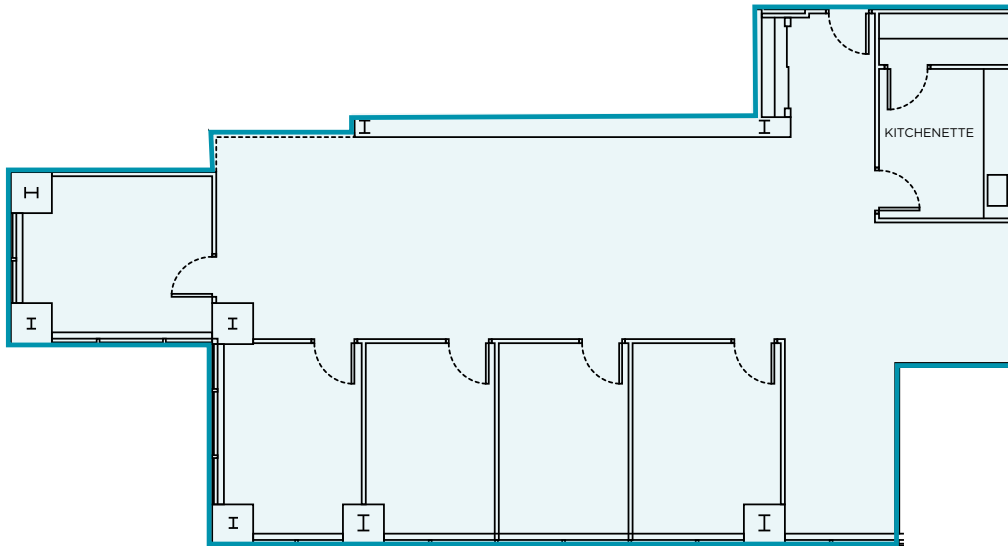
SUITE 100:	2,725 RSF
SUITE 120:	4,931 RSF
SUITE 200:	7,788 RSF
SUITE 203:	5,424 RSF
SUITE 301:	7,324 RSF

BUILDING SPECIFICATIONS

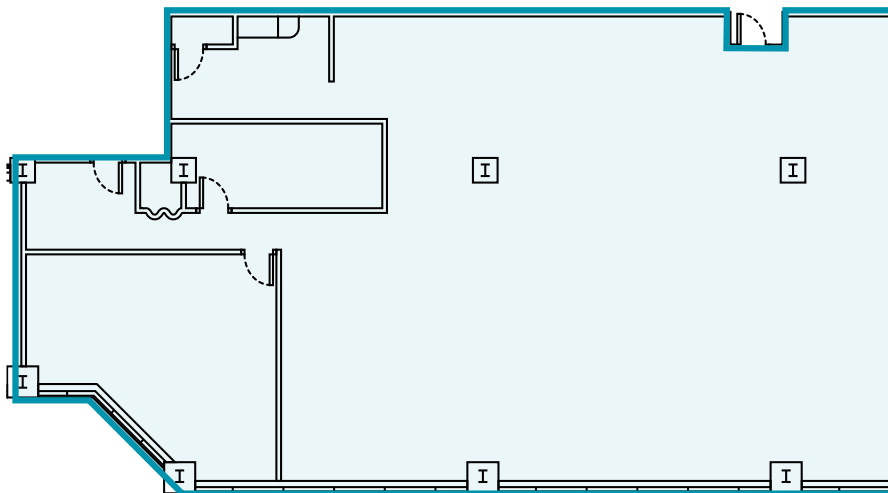
- **Building Size:** 72,291 SF
- **Acreage:** 7.39 Acres
- **Stories:** 3
- **Available SF:** 2,725 - 28,000 SF
- **Year Built:** 1991; Common Areas Renovated in 2017
- **Elevators:** 2 Passenger
- **Parking Ratio:** 3.47/1,000 SF
- **Utilities:**
 - Gas: Eversource
 - Electric: National Grid
 - Water & Sewer: Town of Westborough
- **Service Providers:** Verizon FiOs, Spectrum & Lighttower
- **Shipping & Receiving:** Full Access Loading Dock equipped with motorized door.
- **On site Amenities:**
 - Fitness center with lockers and showers
 - Tenant Lounge Area



SUITE 100: 2,725 RSF

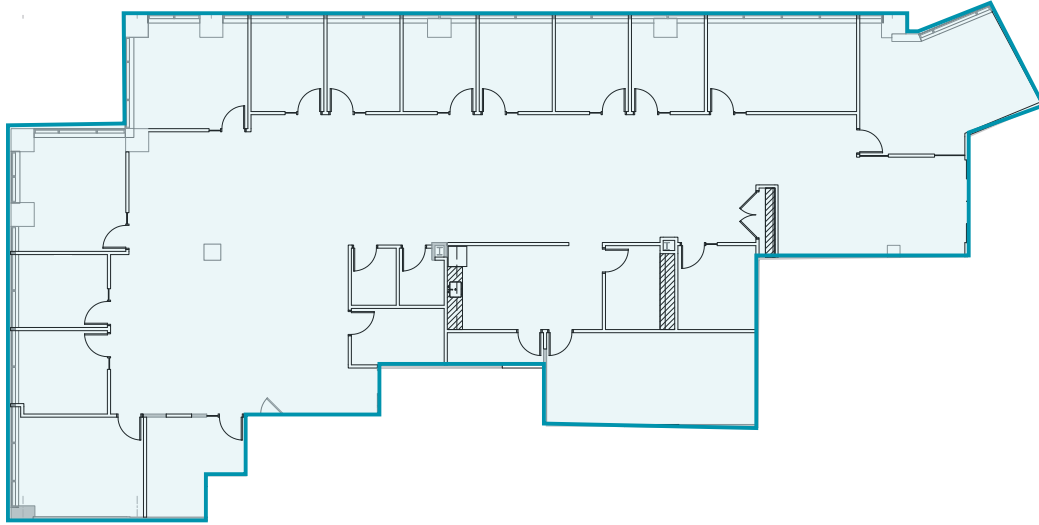


SUITE 120: 4,931 RSF

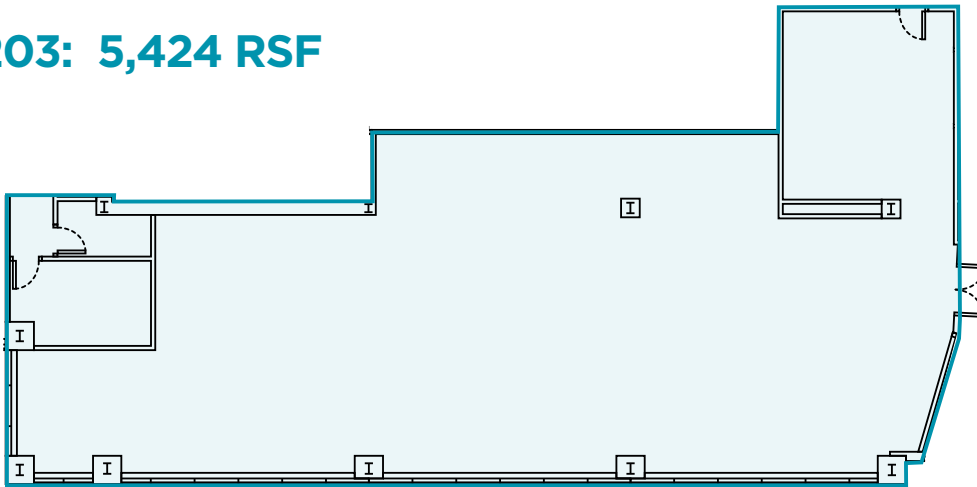




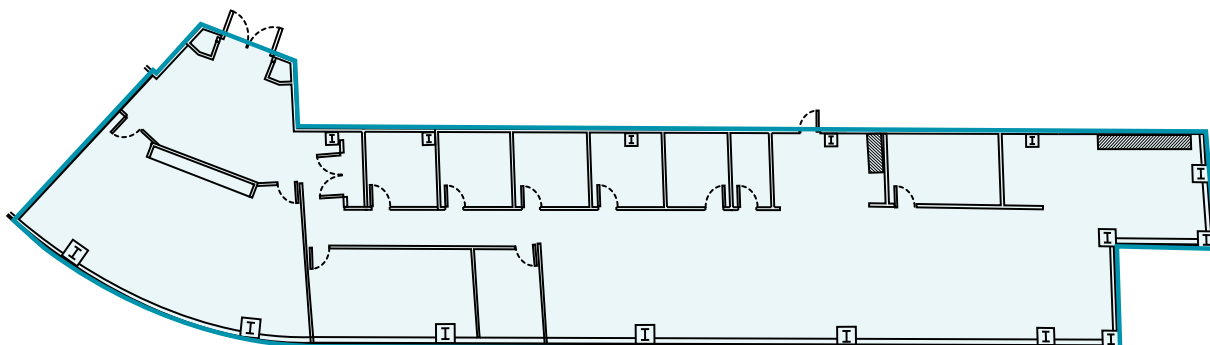
SUITE 200: 7,788 RSF



SUITE 203: 5,424 RSF



SUITE 301: 7,324 RSF







GE Healthcare

Middlesex Savings Bank
Right there with you

MELLON

PARK PLACE TECHNOLOGIES

OWEN O'LEARY'S

DOUBLETREE BY HILTON

Next Generation Children's Centers

9

1400 COMPUTER DRIVE

LabCorp
Laboratory Corporation of America

extended STAY AMERICA

El Basha

MARVELL

amazon

astellas



FOR MORE INFORMATION:



PETE WHORISKEY

+1 617 204 4138

pete.whoriskey@cushwake.com

GEORGE O'CONNOR

+1 617 279 4544

george.oconnor@cushwake.com

RACHEL IGOE

+1 617 279 4547

rachel.igoe@cushwake.com

©2024 Cushman & Wakefield. All rights reserved. The information contained in this communication is strictly confidential. This information has been obtained from sources believed to be reliable but has not been verified. NO WARRANTY OR REPRESENTATION, EXPRESS OR IMPLIED, IS MADE AS TO THE CONDITION OF THE PROPERTY (OR PROPERTIES) REFERENCED HEREIN OR AS TO THE ACCURACY OR COMPLETENESS OF THE INFORMATION CONTAINED HEREIN, AND SAME IS SUBMITTED SUBJECT TO ERRORS, OMISSIONS, CHANGE OF PRICE, RENTAL OR OTHER CONDITIONS, WITHDRAWAL WITHOUT NOTICE, AND TO ANY SPECIAL LISTING CONDITIONS IMPOSED BY THE PROPERTY OWNER(S). ANY PROJECTIONS, OPINIONS OR ESTIMATES ARE SUBJECT TO UNCERTAINTY AND DO NOT SIGNIFY CURRENT OR FUTURE PROPERTY PERFORMANCE.



**CUSHMAN &
WAKEFIELD**