

LEASE



RETAIL

3915 GRAPE ROAD



3915 GRAPE ROAD, MISHAWAKA, IN 46545

PROPERTY OVERVIEW

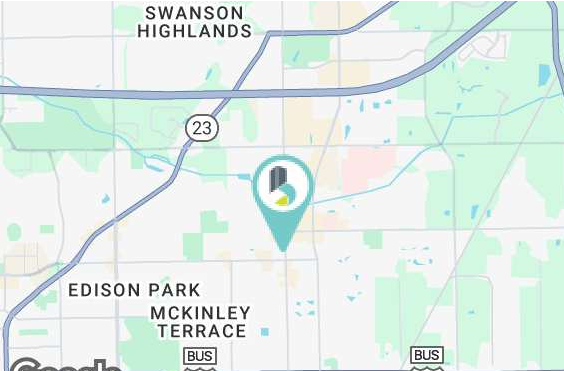
This 4,600 square foot endcap suite offers fantastic frontage, visibility, and access on one of the busiest retail corridors in the County. The space was formerly occupied by Rise N' Roll and features some utility and bakery infrastructure (no equipment) in place, including a grease trap. The site is accessible via multiple points of ingress on Grape Rd, and has ample surface parking. The space features open seating area, kitchen, restrooms, office, and storage space.

PROPERTY HIGHLIGHTS

- 4,600 former bakery endcap suite with grease trap and some existing infrastructure in place
- Façade and pylon signage opportunities available
- Strong traffic counts: 23,512 AADT (Grape Rd) & 20,755 AADT (Edison Rd)
- Located in Mishawaka’s primary retail corridor near University Park Mall
- Surrounded by national retailers, including Target, Walmart, Menards, Lowe’s, Kohl’s, & more

LEASE RATE \$21.00 SF/YR (NNN)

Available SF:	4,600 SF
Lot Size:	2.23 Acres
Zoning:	C-1 (Mishawaka)
Traffic Count Grape Rd:	23,512 AADT
Traffic Counts Edison	20,775 AADT



BRADLEY COMPANY  
112 W. Jefferson Blvd., Suite 300  
South Bend, IN 46601  
574.237.6000

BRENDAN BRADLEY  
Senior Broker  
574.850.4927  
bbradley@bradleyco.com

NIKKI ARIVE  
Broker  
574.213.5605  
narive@bradleyco.com

MATT WETZEL  
Senior Vice President  
574.970.9006  
mwetzel@bradleyco.com

GREG PINK  
Senior Vice President  
574.237.6004  
gpink@bradleyco.com



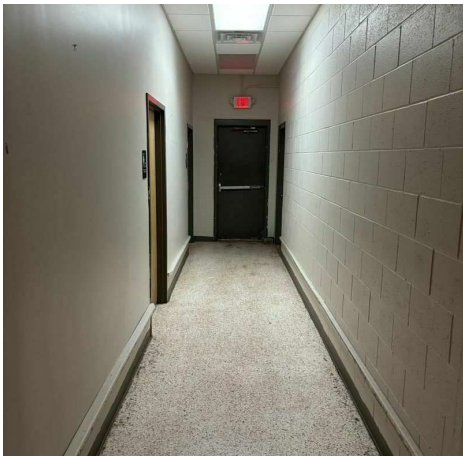
BRADLEYCO.COM



3915 GRAPE ROAD, MISHAWAKA, IN 46545

LEASE

RETAIL



**BRENDAN BRADLEY**  
Senior Broker  
574.850.4927  
bbradley@bradleyco.com

**NIKKI ARIVE**  
Broker  
574.213.5605  
narive@bradleyco.com

**MATT WETZEL**  
Senior Vice President  
574.970.9006  
mwetzel@bradleyco.com

**GREG PINK**  
Senior Vice President  
574.237.6004  
gpink@bradleyco.com



# MISHAWAKA AREA AMENITIES

3915 GRAPE ROAD, MISHAWAKA, IN 46545

LEASE

RETAIL



**BRENDAN BRADLEY**  
Senior Broker  
574.850.4927  
bbradley@bradleyco.com

**NIKKI ARIVE**  
Broker  
574.213.5605  
narive@bradleyco.com

**MATT WETZEL**  
Senior Vice President  
574.970.9006  
mwetzel@bradleyco.com

**GREG PINK**  
Senior Vice President  
574.237.6004  
gpink@bradleyco.com



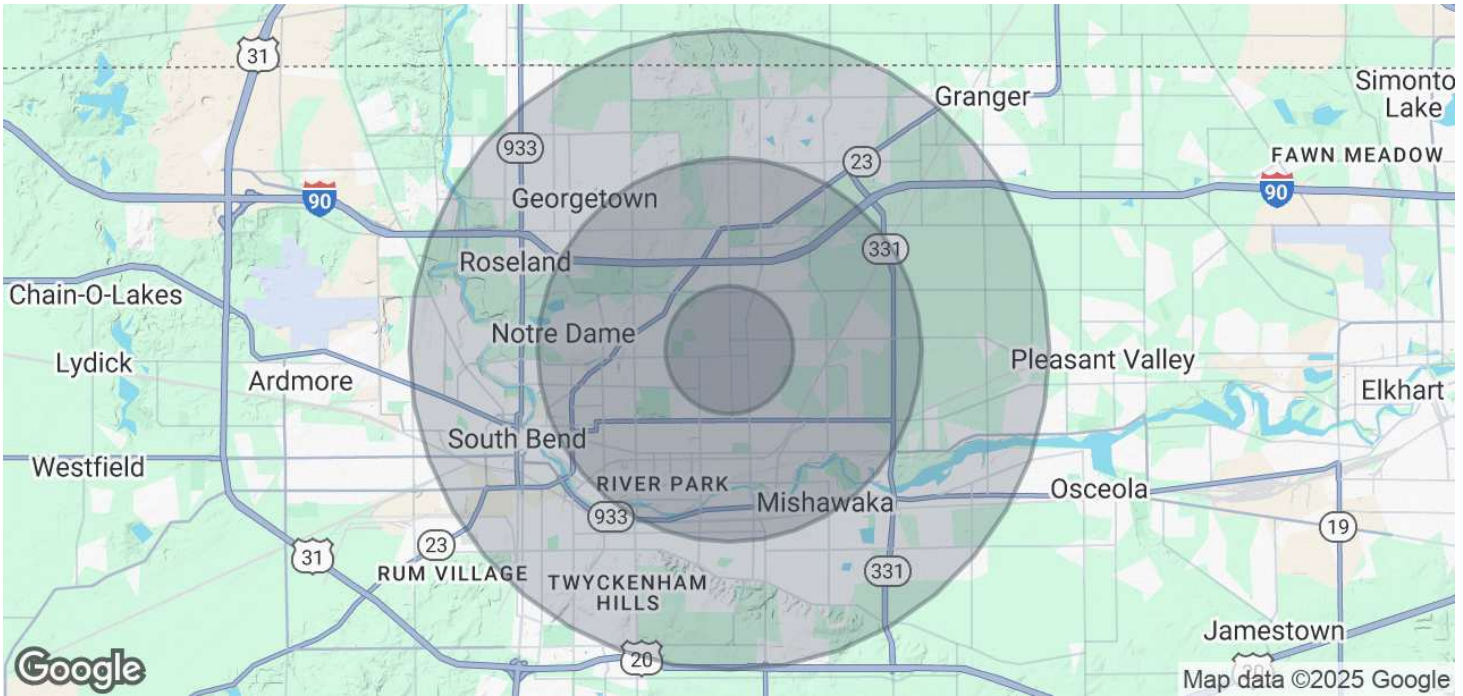


# DEMOGRAPHICS MAP & REPORT

3915 GRAPE ROAD, MISHAWAKA, IN 46545

LEASE

RETAIL



POPULATION	1 MILE	3 MILES	5 MILES
Total Population	11,047	76,987	164,351
Average Age	40	38	39
Average Age (Male)	38	37	38
Average Age (Female)	42	40	40

HOUSEHOLDS & INCOME	1 MILE	3 MILES	5 MILES
Total Households	5,547	32,254	65,433
# of Persons per HH	2	2.4	2.5
Average HH Income	\$61,300	\$78,550	\$89,390
Average House Value	\$208,463	\$232,194	\$231,963

Demographics data derived from AlphaMap

**BRENDAN BRADLEY**  
 Senior Broker  
 574.850.4927  
 bbradley@bradleyco.com

**NIKKI ARIVE**  
 Broker  
 574.213.5605  
 narive@bradleyco.com

**MATT WETZEL**  
 Senior Vice President  
 574.970.9006  
 mwetzel@bradleyco.com

**GREG PINK**  
 Senior Vice President  
 574.237.6004  
 gpink@bradleyco.com