

2319

E. COLFAX AVE.

DENVER.CO 80206

CREATIVE OFFICE SUITE
FOR LEASE

\$19.50/SF MG*

Tenant pays its own:
janitorial and electricity



THE CUBE BUILDING

Property Overview

- Prime location, within walking distance of countless restaurants, bars, retail amenities on historic Colfax Ave. (Walk Score of 93/100)
- Includes beautiful new kitchen
- 5 minutes from Downtown Denver
- Blocks away from City Park and Cheesman Park
- Surface lots and parking nearby in surrounding neighborhood
- Tenant pays janitorial & electricity
- High ceilings, polished concreted and modern finishes throughout

NAIShames Makovsky

Bldg Size 7,640 SF

Available 3,246 SF

Year Built 2010

Walk Score 93/100

Ana Sandomire

303 565 3029

asandomire@shamesmakovsky.com

Peter Knisely

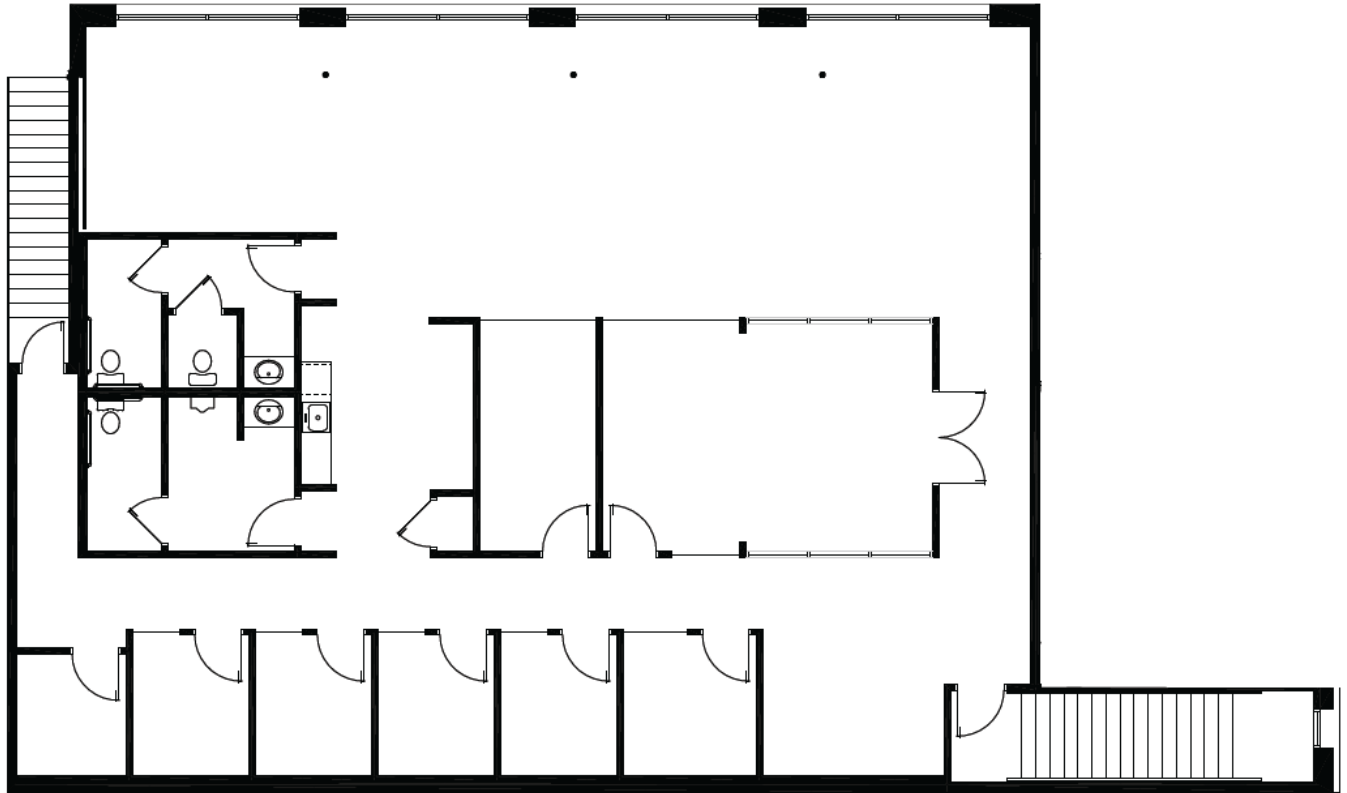
720 881 7534

pknisely@shamesmakovsky.com

2319

E. COLFAX AVE.

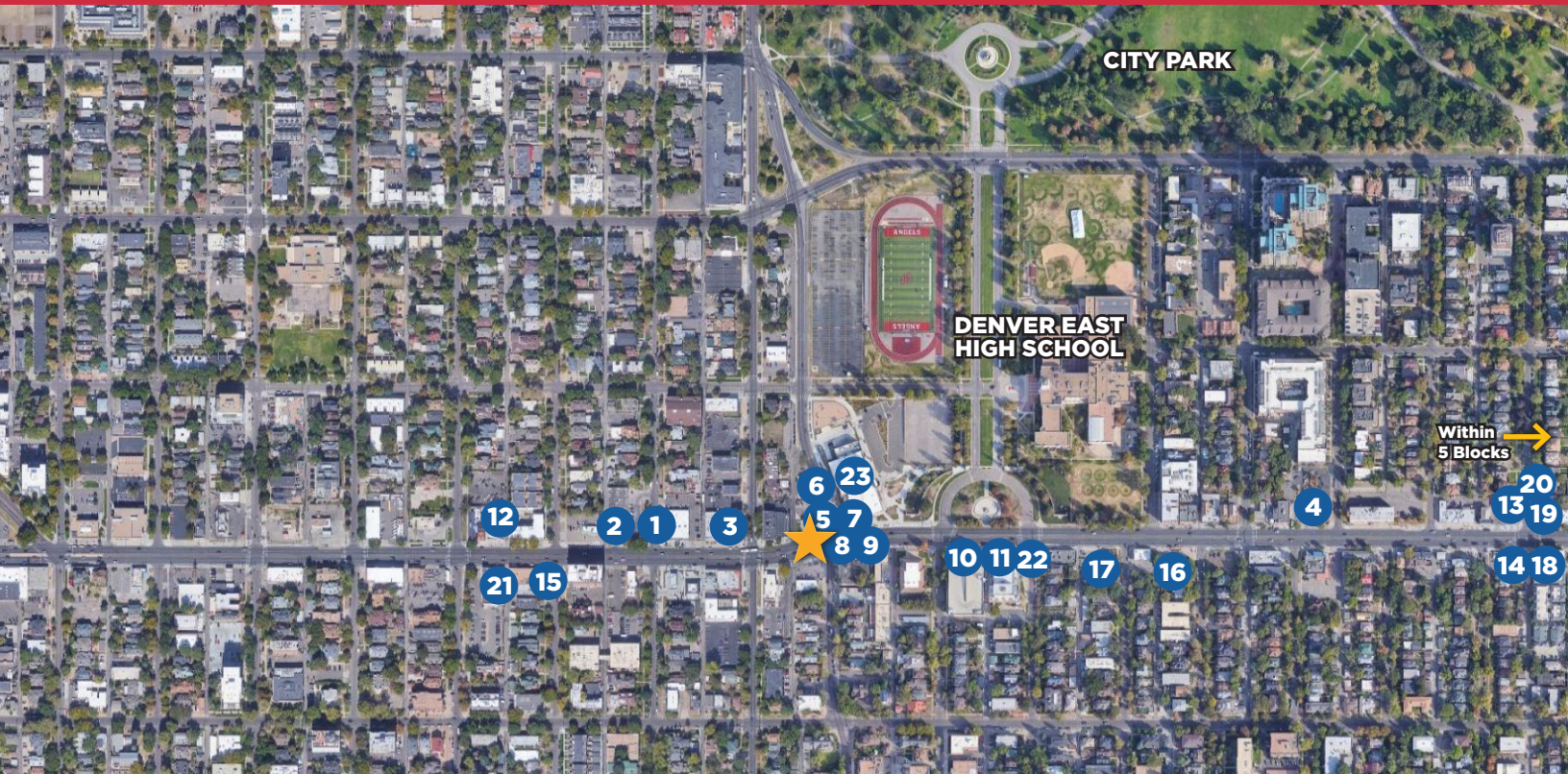
DENVER.CO 80206





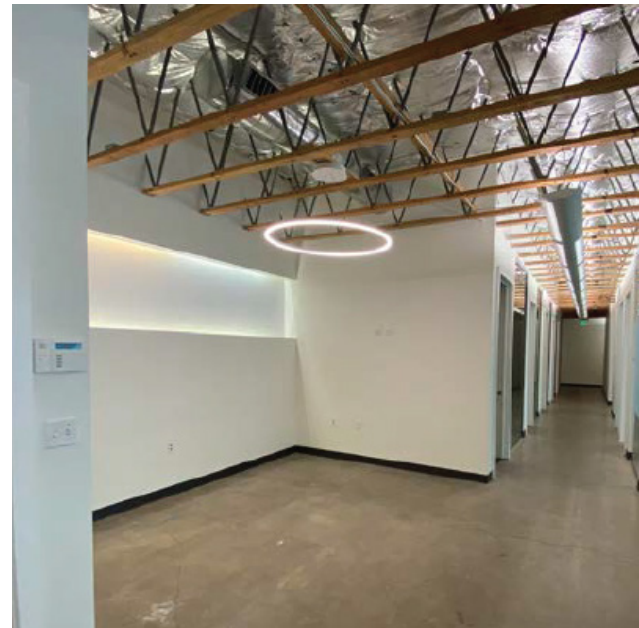
2319

E. COLFAX AVE.



Area Amenities

1	Noodles & Company	13	Atomic Cowboy
2	Marco's Pizza	14	Mezcal
3	Which Wich	15	Pete's Kitchen
4	Starbucks	16	Omonia Bakery
5	The DNVR Bar	17	Little Beast Street Food
6	Tacos Tequila Whiskey	18	Tommy's Thai
7	Okinawa	19	Chick-Fil-A
8	Jimmy John's	20	Sprouts Market
9	Subway	21	Walgreens
10	Chipotle	22	Bar Max
11	Chocolate Lab	23	Carla Madison Rec Center
12	Illegal Pete's		



NAI Shames Makovsky

NO WARRANTY OR REPRESENTATION, EXPRESS OR IMPLIED, IS MADE AS TO THE ACCURACY OF THE INFORMATION CONTAINED HEREIN, AND THE SAME IS SUBMITTED SUBJECT TO ERRORS, OMISSIONS, CHANGE OF PRICE, RENTAL OR OTHER CONDITIONS, PRIOR SALE, LEASE OR FINANCING, OR WITHDRAWAL WITHOUT NOTICE, AND OF ANY SPECIAL LISTING CONDITIONS IMPOSED BY OUR PRINCIPALS NO WARRANTIES OR REPRESENTATIONS ARE MADE AS TO THE CONDITION OF THE PROPERTY OR ANY HAZARDS CONTAINED THEREIN ARE ANY TO BE IMPLIED.

Ana Sandomire

303 565 3029

asandomire@shamesmakovsky.com

Peter Knisely

720 881 7534

pknisely@shamesmakovsky.com