

993 PARK AVE NEW YORK, NY 10028



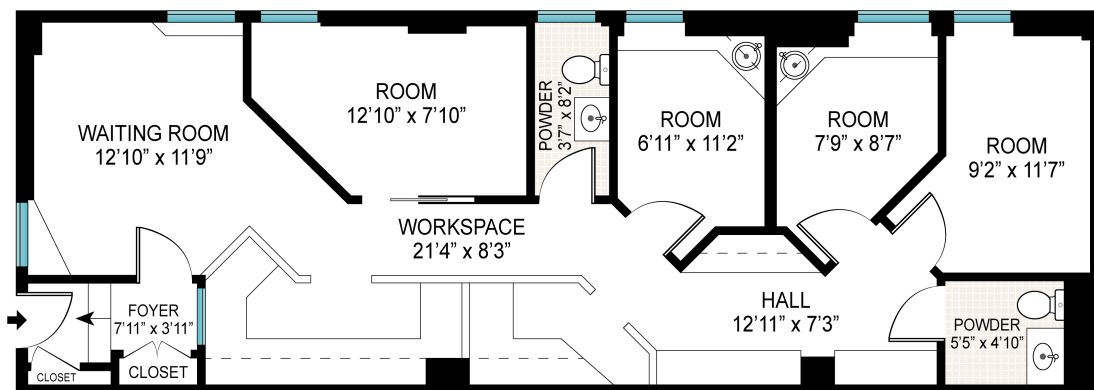
Sales Price

\$739,000

CC: \$5,149 Monthly

Medical / Professional Co-op with private Park Ave entrance, approximately 1000 square feet. Four exam rooms, staff office, waiting area, and two bathrooms. In good condition. Monthly common charges are \$5,149 per month.

**REACH OUT
FOR MORE INFORMATION**



TOTAL: 827 ft²
CEILING HEIGHT: 9'2"



Scale in feet. Indicative only. Dimensions are approximate. All information contained herein is gathered from sources we believe to be reliable. However, we cannot guarantee its accuracy and interested persons should rely on their own inquiries.

993 Park Avenue, New York

 DouglasElliman



Jon Smilowitz

Lic. Assoc. Real Estate Broker

O: 212.350.8542 | M: 516.551.1307

Jon.Smilowitz@elliman.com

 **DouglasElliman**