

Revelli Building

\$379,0000

5230 E 12 th St.

Oakland, CA 94601

YOUR NAME HERE

YOUR NAME
HERE

**CENTURY 21
COMMERCIAL®**

Epic

Daniel Rogers

DRE#02051470

daniel.rogers@c@!epic.com



THE OFFERING

Flexible Industrial Property with Live/Work Potential –

5230 E 12th St, Oakland, CA | 1,550 SF | HBX-2

Versatile and full of potential, this +/-1,550 SF single-story warehouse offers a rare opportunity for owner-users, tradespeople, and creative entrepreneurs seeking a functional space in Oakland's HBX-2 zoning district.



Property Type
Flex/Warehouse/Creative Space

Building Size
+/-1,550 sqft

Lot Size
+/- 1570 sqft

HBX-2 Zoning
Located in Opportunity Zone

Asking Price
\$379,000



COMMERCIAL®



SUMMARY

Mixed-Use Functionality: Includes two private offices, a full kitchen, and a large bathroom with shower — ideal for businesses needing workspace with on-site amenities.



Open Workshop: Large open area with roll-up door — spacious enough to park vehicles indoors or support a wide range of fabrication, storage, or production uses.

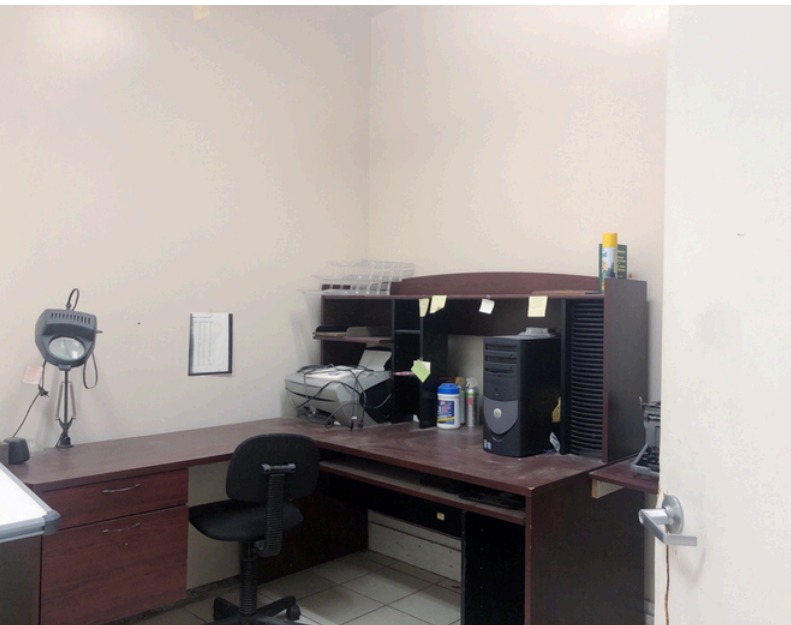
Live/Work Possibility: Located in the HBX-2 zone, which supports Joint Living and Working Quarters (JLWQ) subject to City of Oakland approval — allowing the potential for residential use integrated with business activity.



COMMERCIAL®

PHOTOS







AERIAL ANNOTATION MAP



5230

5230 E 12th St Oakland, CA 94601



C21 Commercial
6580 Oakmont Dr, Santa Rosa CA 95409
510-734-5327
License: 02051470
daniel.rogers@c21epic.com

Thank You



Daniel Rogers

Broker Associate
DRE#02051470

510.734.5327

daniel.rogers@c21epic.com
danielrogersrealestate.com

CENTURY 21
COMMERCIAL®

Epic