



# 20/21 BUSINESS CENTER

**PRIME  
INTERSTATE  
LOCATION**

HIGH VISIBILITY  
OPPORTUNITIES  
AVAILABLE



CAPITAL IMPROVEMENTS  
RECENTLY COMPLETED

COLUMBIA, SOUTH CAROLINA

**FOR LEASE**  
FLEX/OFFICE SPACE





6904 N MAIN STREET

CENTRAL  
LOCATION  
EXCELLENT  
ACCESSIBILITY  
PROFESSIONALLY  
MANAGED



100 NORTHEAST DR



400 NORTHEAST DR

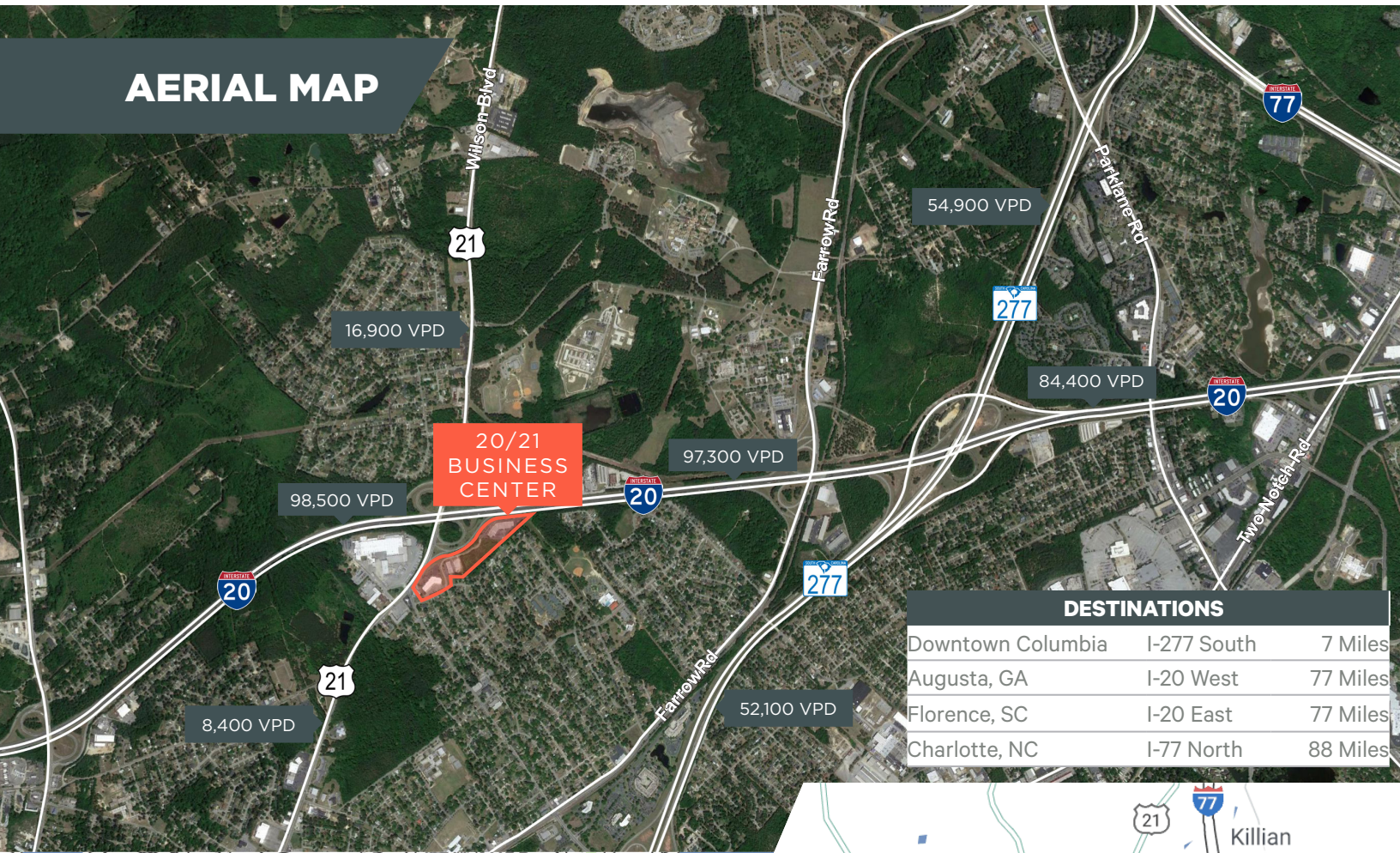
## PRIME OPPORTUNITY

- Professional/Flex park environment
- Suites available ranging from  $\pm$  2,450 SF to  $\pm$  5,503 SF Flex space
- New exterior paint and updated standard signage
- Warehouse areas offer dock or drive-in doors and 12'+ clear heights
- Ideal central location with excellent interstate accessibility and visibility
- Ample on-site parking
- Signage opportunities
- Asking rate \$13.00 per rentable square foot, NNN

**HIGHLY FLEXIBLE SPACES**

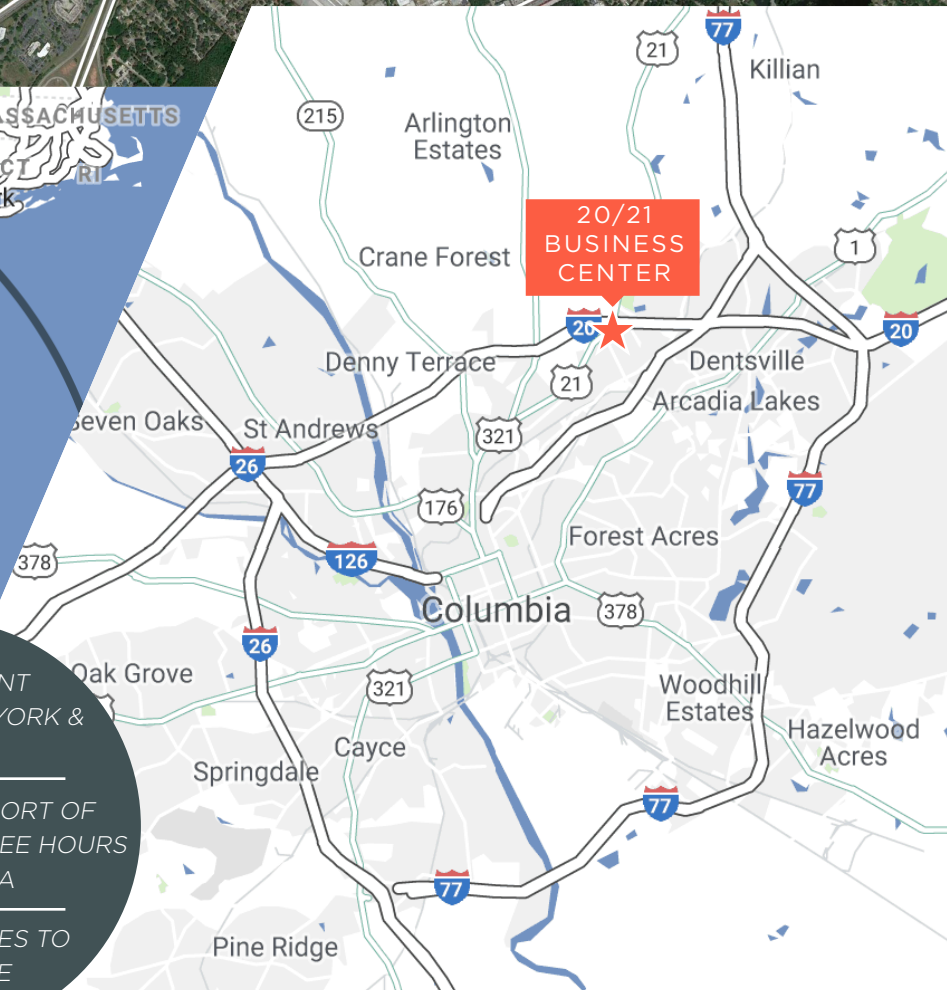
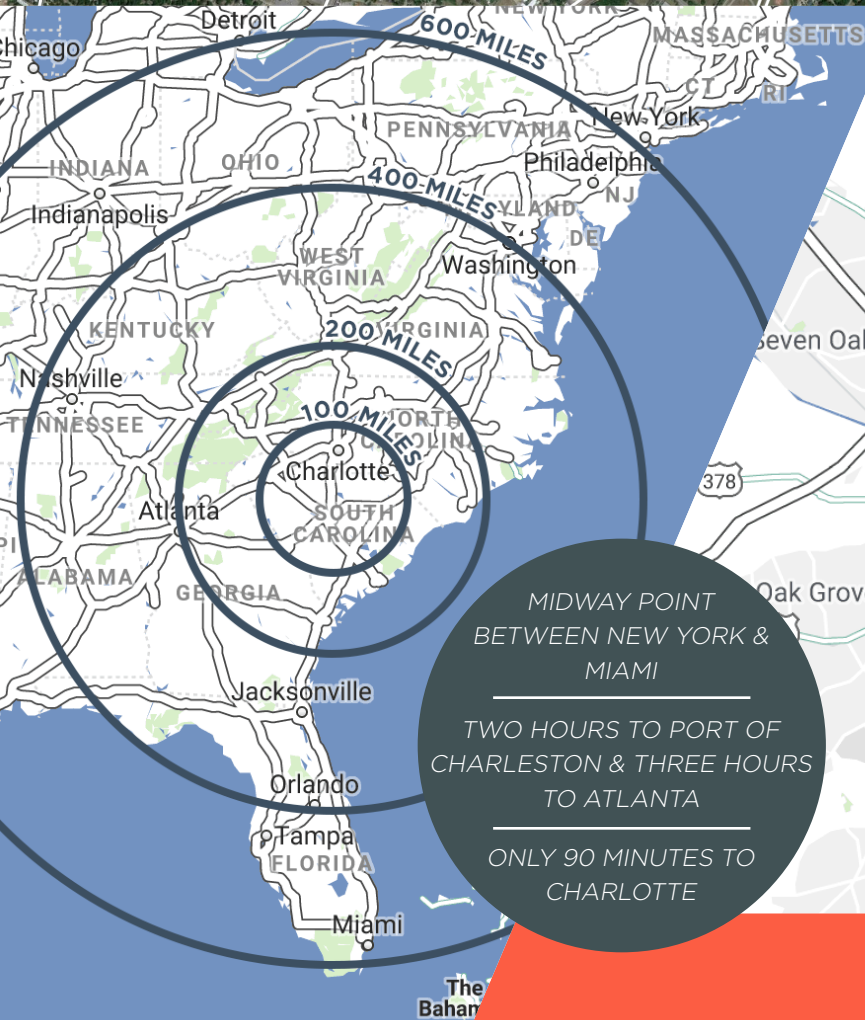


# AERIAL MAP



## DESTINATIONS

Downtown Columbia	I-277 South	7 Miles
Augusta, GA	I-20 West	77 Miles
Florence, SC	I-20 East	77 Miles
Charlotte, NC	I-77 North	88 Miles



# 20/21 BUSINESS CENTER

---

## CONTACT US

Marie Dieckmann  
Senior Associate

+1 803 744 5091  
[marie.dieckmann@cbre.com](mailto:marie.dieckmann@cbre.com)

Aaron Dupree, CCIM  
First Vice President

+1 803 744 6859  
[aaron.dupree@cbre.com](mailto:aaron.dupree@cbre.com)

[www.cbre.com/columbia](http://www.cbre.com/columbia)

1333 Main Street, Suite 210 | Columbia, SC 29201

# CBRE

© 2025 CBRE, Inc. All rights reserved. This information has been obtained from sources believed reliable, but has not been verified for accuracy or completeness. You should conduct a careful, independent investigation of the property and verify all information. Any reliance on this information is solely at your own risk. CBRE and the CBRE logo are service marks of CBRE, Inc. All other marks displayed on this document are the property of their respective owners, and the use of such logos does not imply any affiliation with or endorsement of CBRE. Photos herein are the property of their respective owners. Use of these images without the express written consent of the owner is prohibited.