

RETAIL FOR LEASE



372
N ROBERTSON
BOULEVARD

Carine Mamann
Vice Chairman
lic. 01734150
carine.mamann@cushwake.com
T. 310 595 2235

Kazuko Morgan
Executive Vice Chairman
lic. 01070005
kazuko.morgan@cushwake.com
T. 415 773 3546



PROPERTY DETAILS

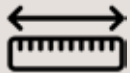


SIZE

Ground ± 1,765 SF

Mezzanine ± 305 SF

TOTAL ± 2,070 SF



FRONTAGE

On Robertson Blvd
& Ashcroft Blvd



PARKING

Parking lot behind
the building



HIGHLIGHTS

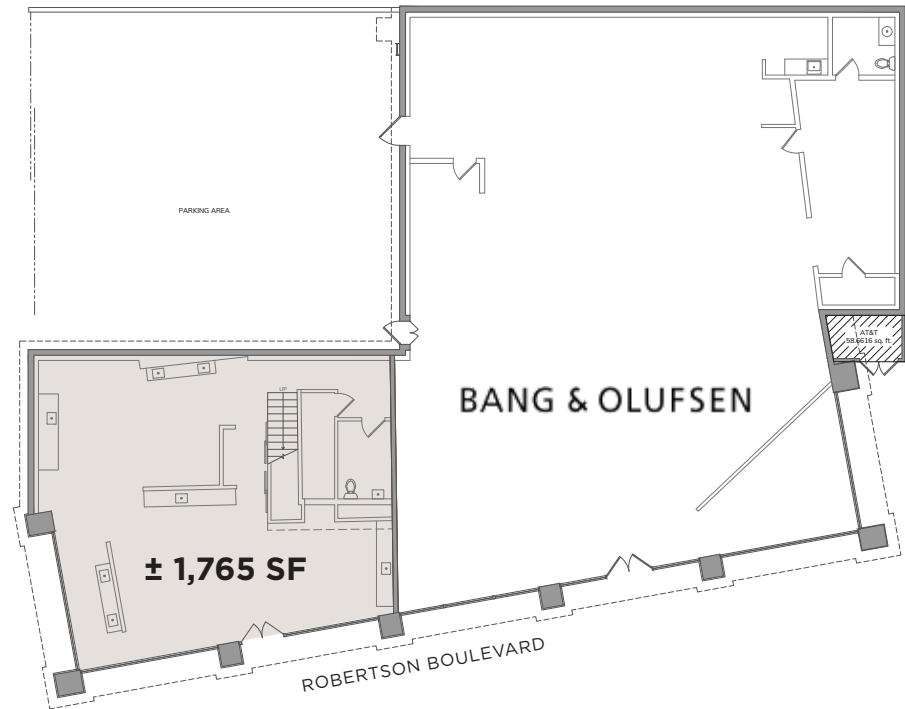
Ground ± 1,765 SF
Mezzanine ± 305 SF

TOTAL ± 2,070 SF

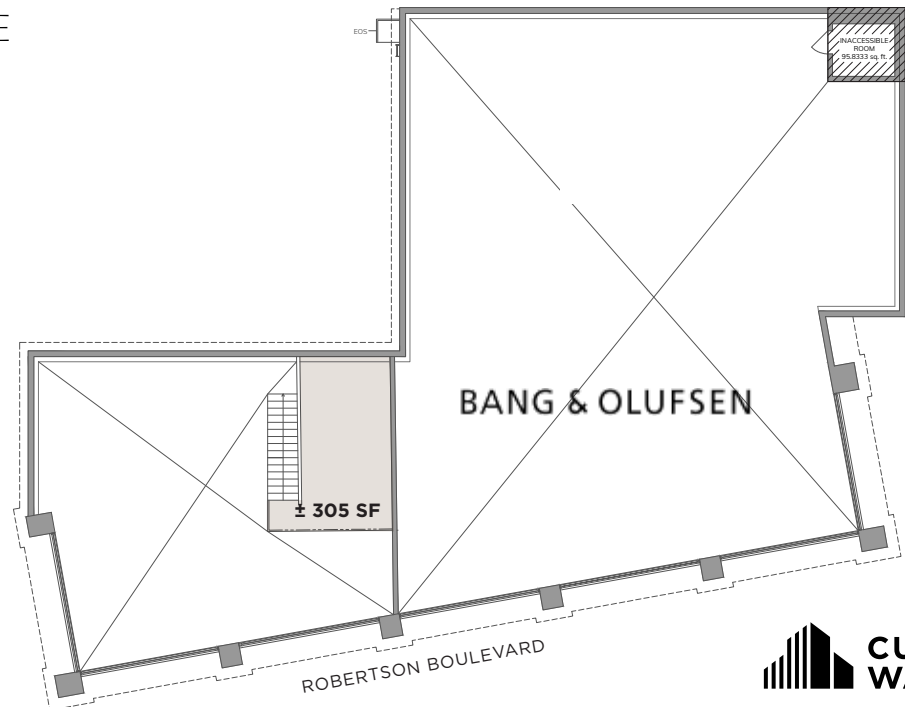
Located on Robertson Boulevard
steps from Melrose Avenue.

Highly coveted location surrounded
by many well known retailers such as:
Jacquemus, Future Bang & Olufsen,
Cecconi's, Eichholtz, RE/DONE and
many more.

GROUND



MEZZANINE



INTERIOR

