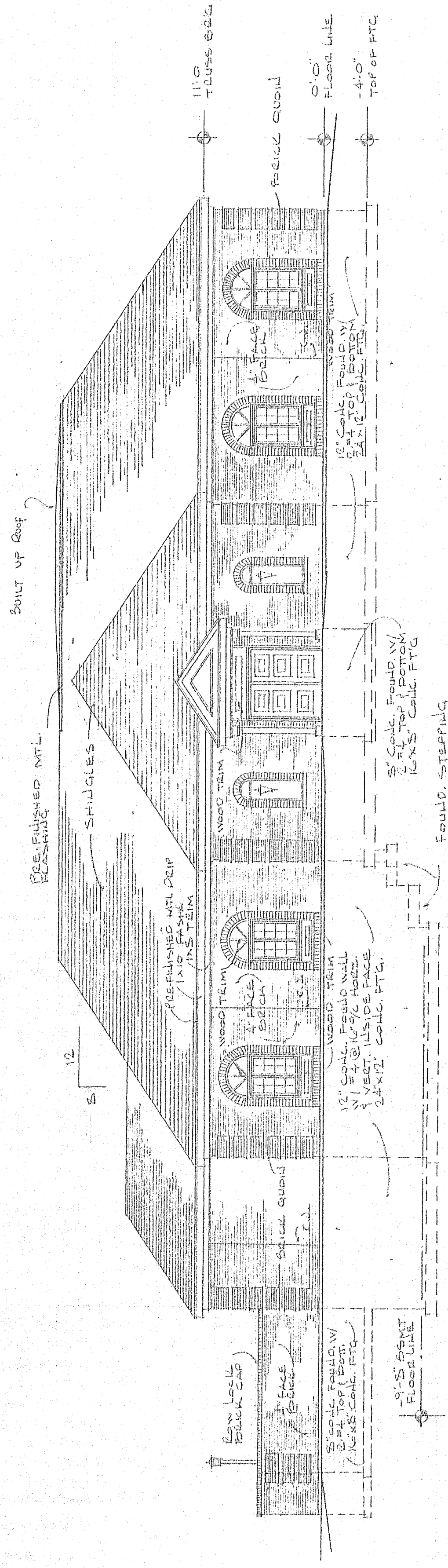
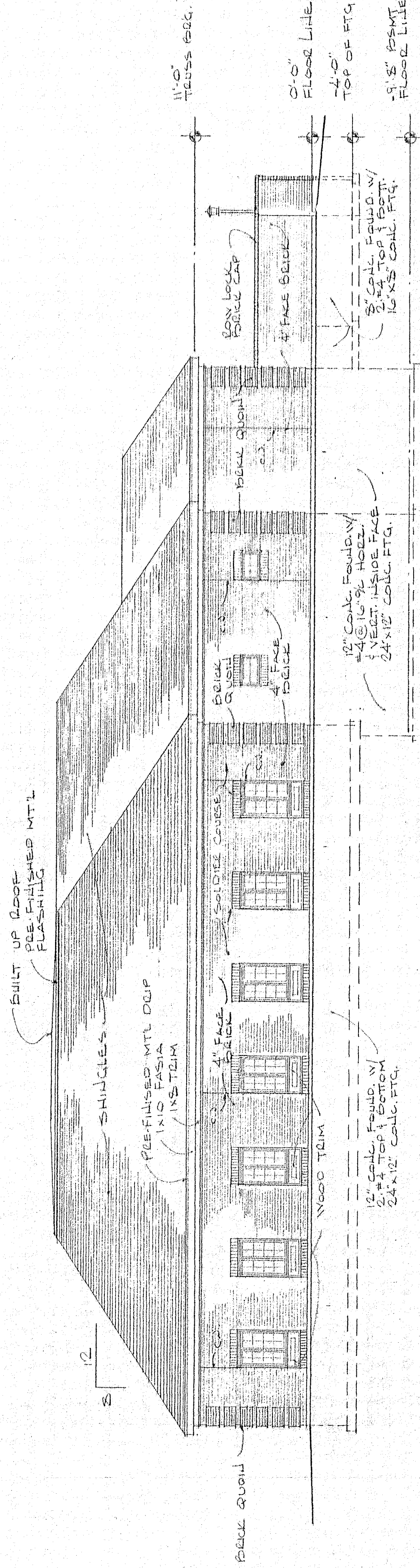


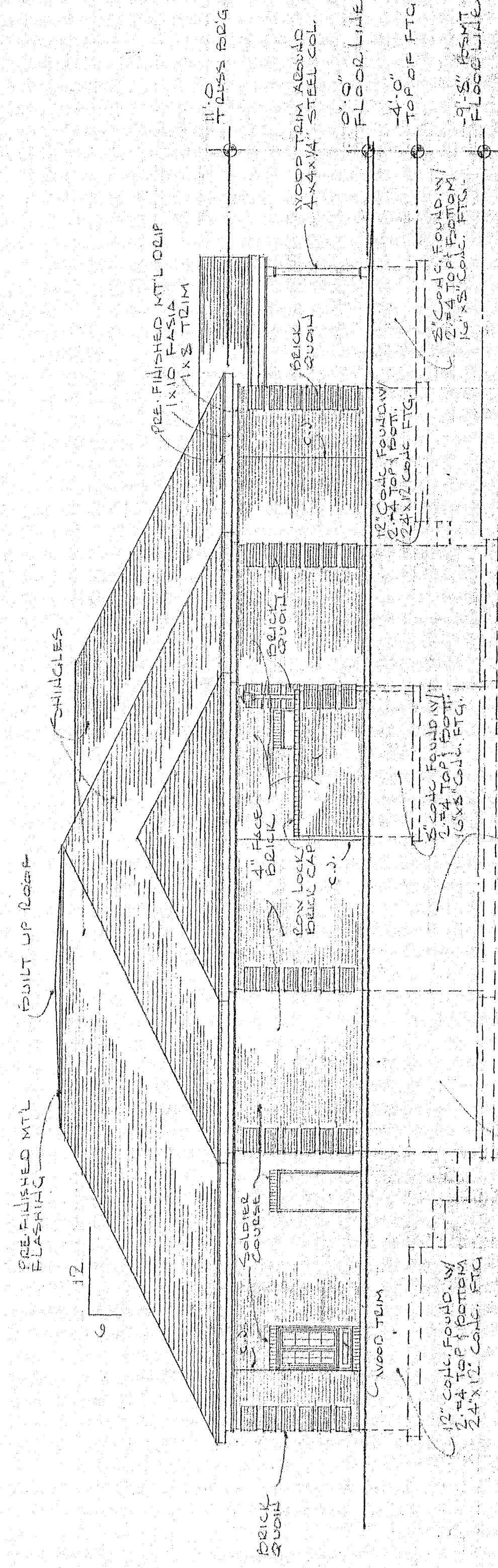
TYPICAL WALL SECTION SCALE: 3/4"=1'-0"



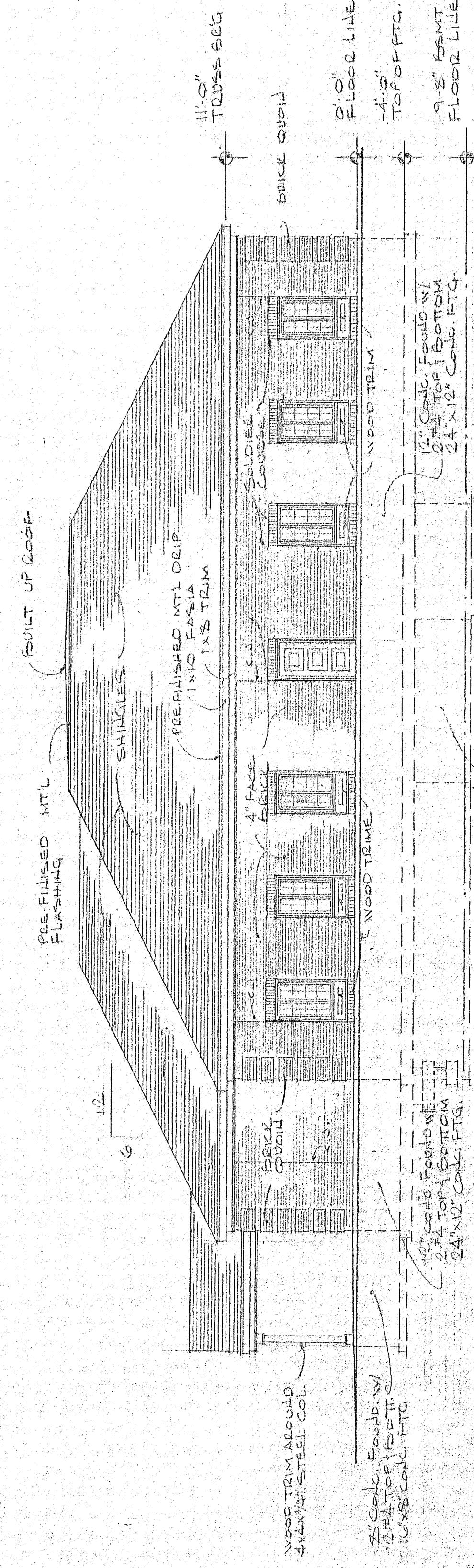
SOUTH ELEVATION SCALE: 1/8"=1'-0"



NORTH ELEVATION SCALE: 1/8"=1'-0"



WEST ELEVATION SCALE: 1/8"=1'-0"



EAST ELEVATION SCALE: 1/8"=1'-0"

