



3950 East Robinson Road

Amherst, New York 14228

Property Highlights

- Strong patient referral network from a variety of established medical tenants
- Ample parking to accommodate patients and staff
- Located just minutes from I-290, providing easy access to dining, shopping, and services
- Negotiable rental terms

Property Overview

Class A medical office space offering a professional setting with on-site parking and room to expand. This property is

Offering Summary

Lease Rate:	\$13.00 - 16.00 SF/yr (NNN)
Building Size:	48,895 SF
Available SF:	1,049 - 2,500 SF
Lot Size:	

Demographics 0.3 Miles 0.5 Miles 1 Mile

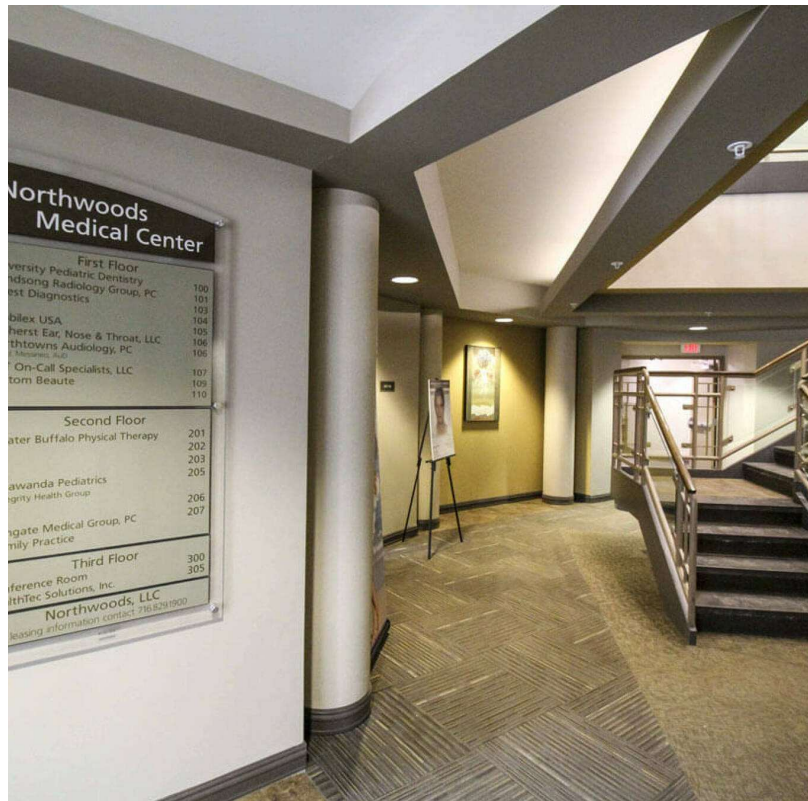
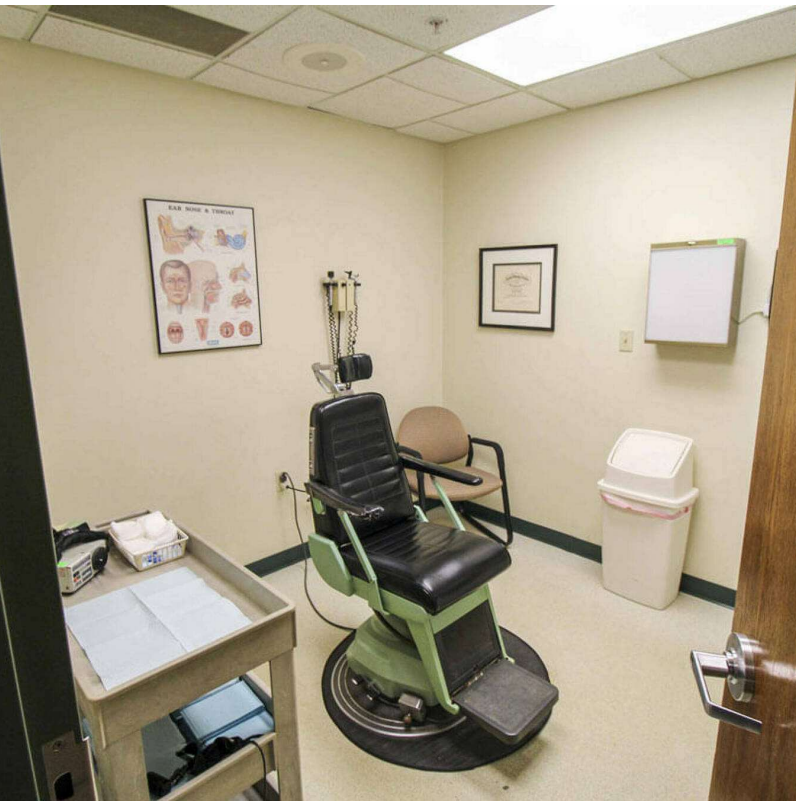
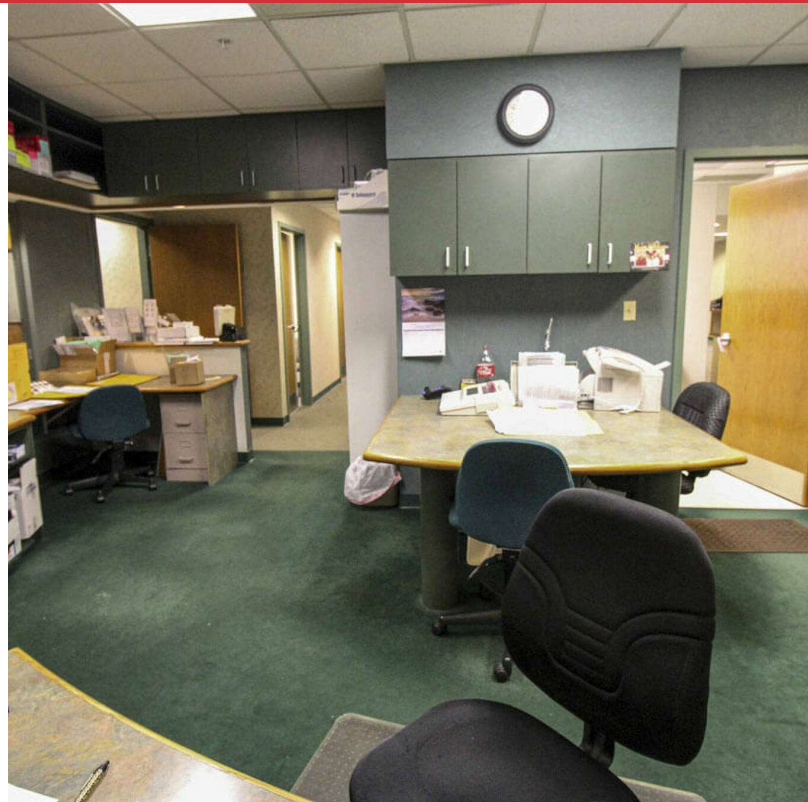
	0.3 Miles	0.5 Miles	1 Mile
Total Households	313	804	2,502
Total Population	740	1,968	6,443
Average HH Income	\$102,048	\$98,723	\$93,602

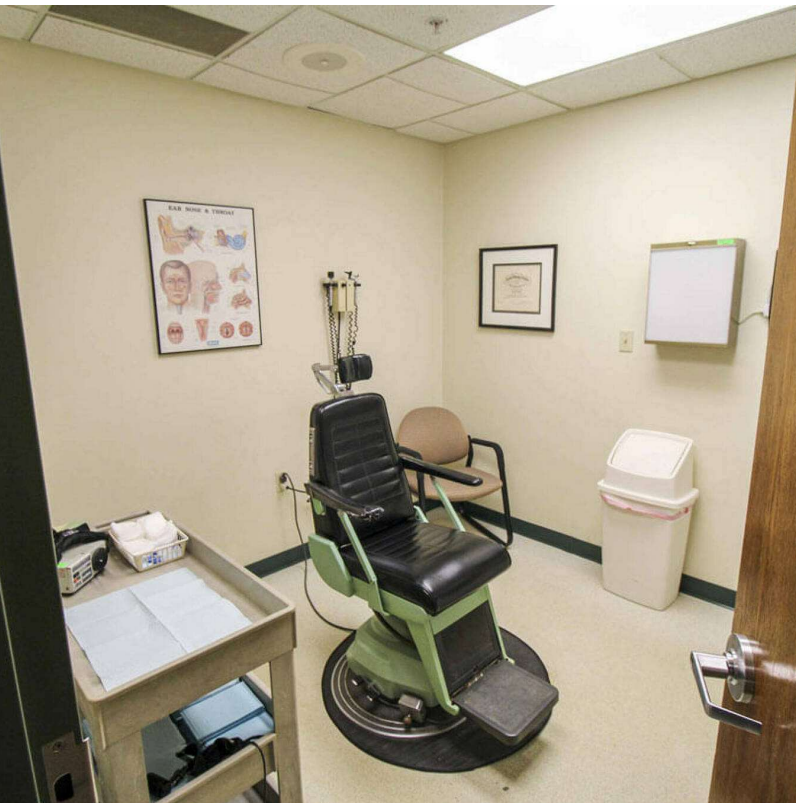
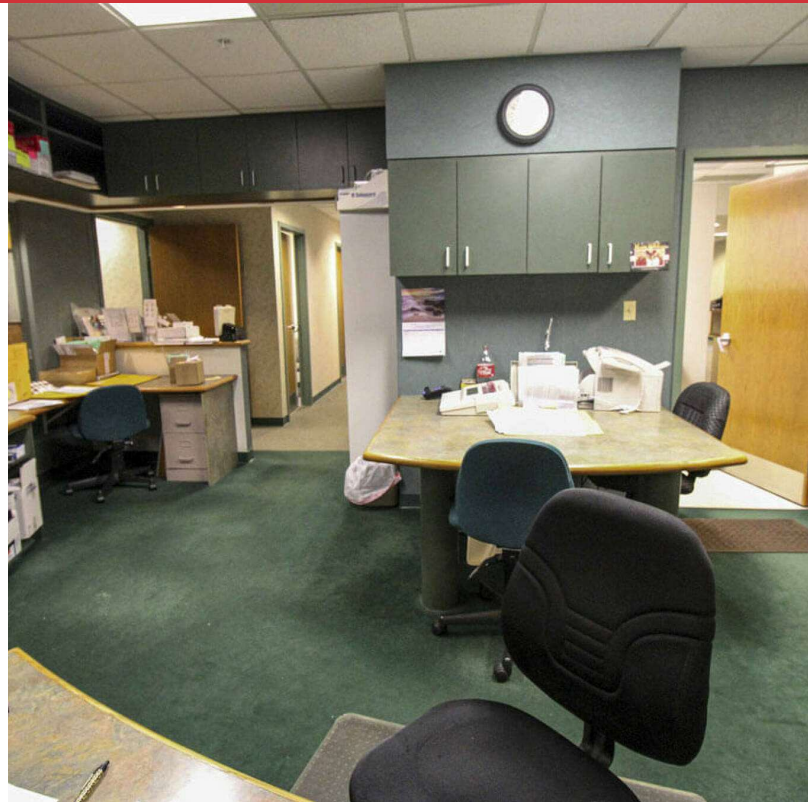
For More Information

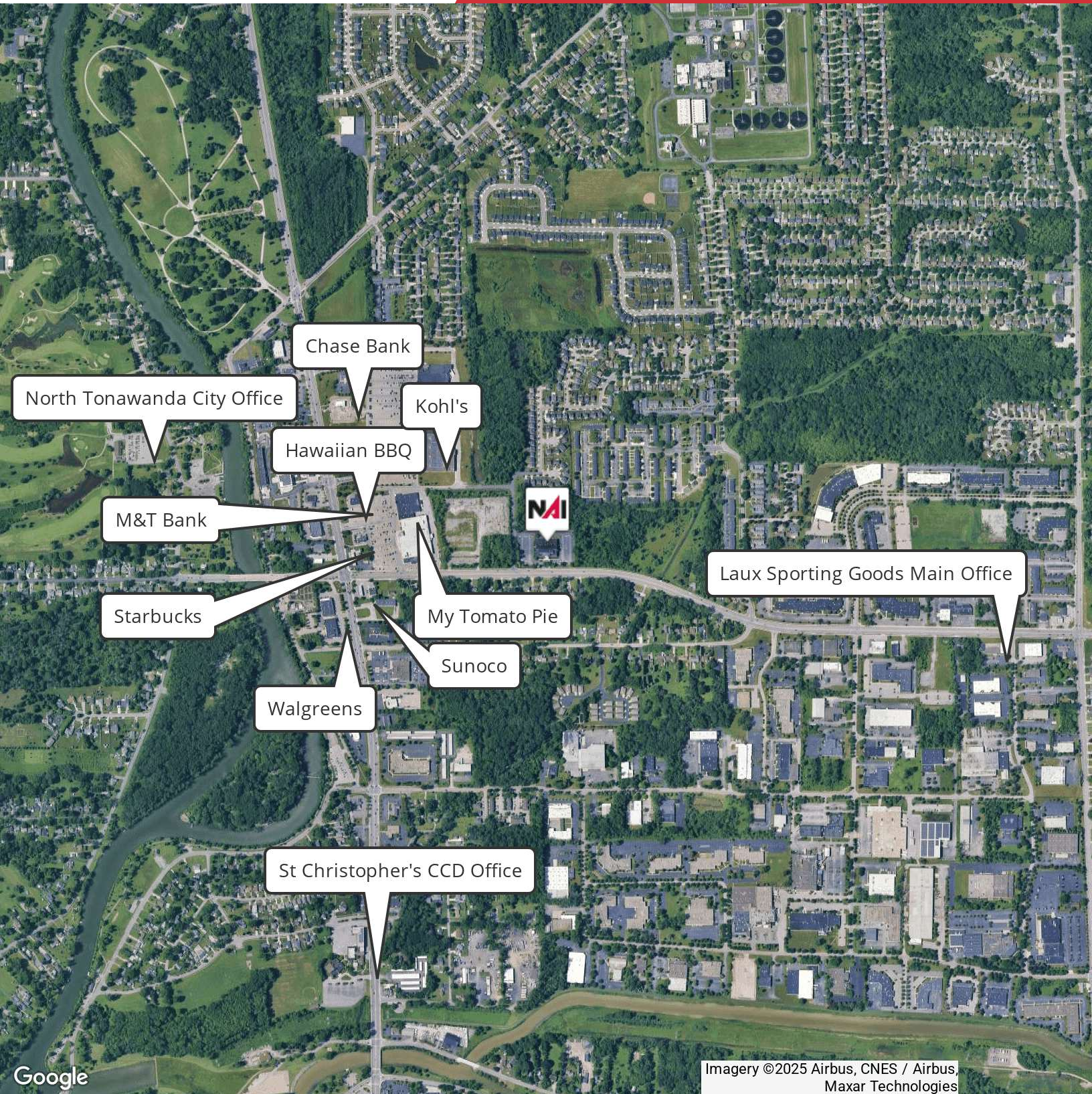
Chadd Soto

O: 716 574 5533

csoto@naimcguire.com





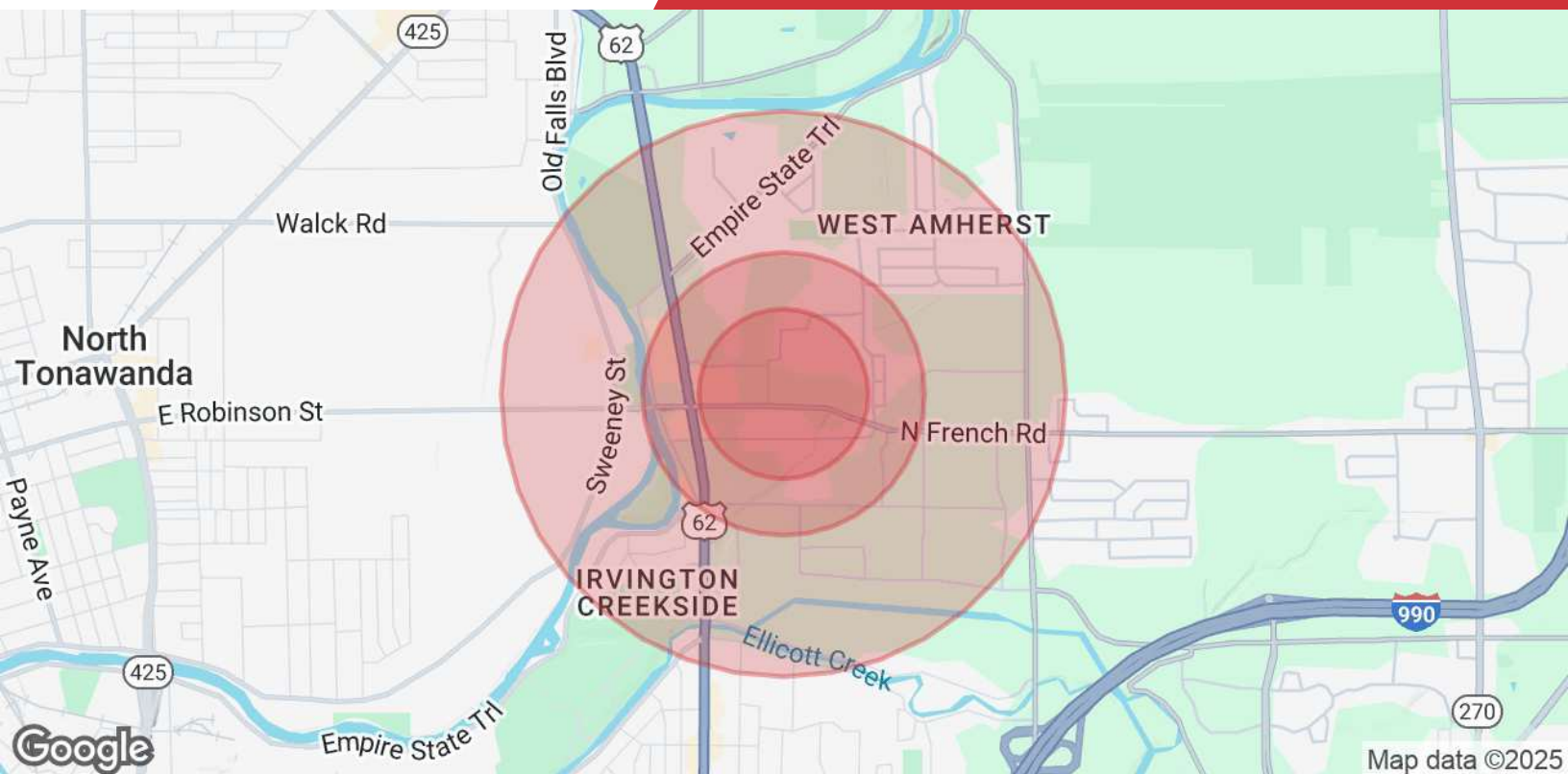


Google

Imagery ©2025 Airbus, CNES / Airbus,
Maxar Technologies

We obtained the information above from sources we believe to be reliable. However, we have not verified its accuracy and make no guarantee, warranty or representation about it. It is submitted subject to the possibility of errors, omissions, change of price, rental or other conditions, prior sale, lease or financing, or withdrawal without notice. We include projections, opinions, assumptions or estimates for example only, and they may not represent current or future performance of the property. You and your tax and legal advisors should conduct your own investigation of the property and transaction.

455 Cayuga Rd Suite 100
Buffalo, NY 14225
212 405 2500 tel
naimcguire.com



Population

	0.3 Miles	0.5 Miles	1 Mile
Total Population	740	1,968	6,443
Average Age	36	36	37
Average Age (Male)	34	34	35
Average Age (Female)	38	38	38

Households & Income

	0.3 Miles	0.5 Miles	1 Mile
Total Households	313	804	2,502
# of Persons per HH	2.4	2.4	2.6
Average HH Income	\$102,048	\$98,723	\$93,602
Average House Value	\$350,468	\$335,817	\$306,660

Demographics data derived from AlphaMap