

BIG STATION PLAZA

Multiple Retail Opportunities and Outlots Available

LEASING Up to 5,400 SF | Delivery Q3 2026



OUTLOT & PRE-LEASING OPPORTUNITY

Big Station Camp
Elementary School

Big Station Camp
Middle School



Spring

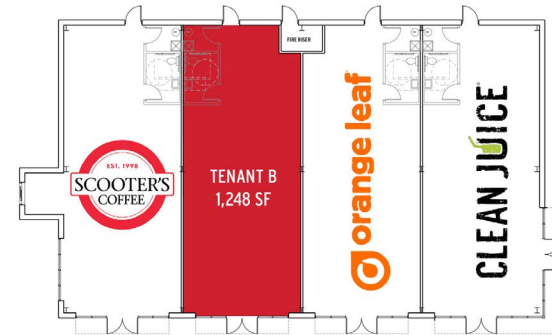
Big Station Camp Blvd

RETAIL CENTER UNDER CONSTRUCTION

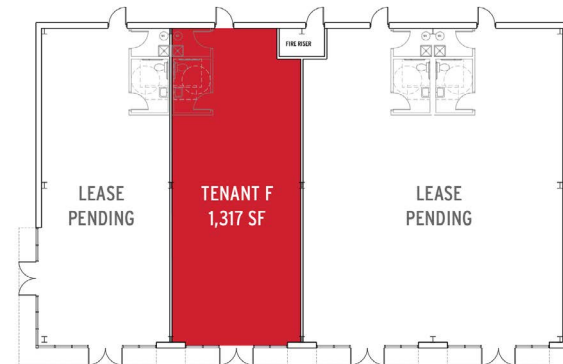


ADDRESS	274 Big Station Camp Blvd. Gallatin, TN 37066
AVAILABLE	See Below
DELIVERY	Q3 2026
FEATURES	Class A Retail Space 87 Parking Spaces Flexibility in courtyard for drive-thru or outdoor patio space

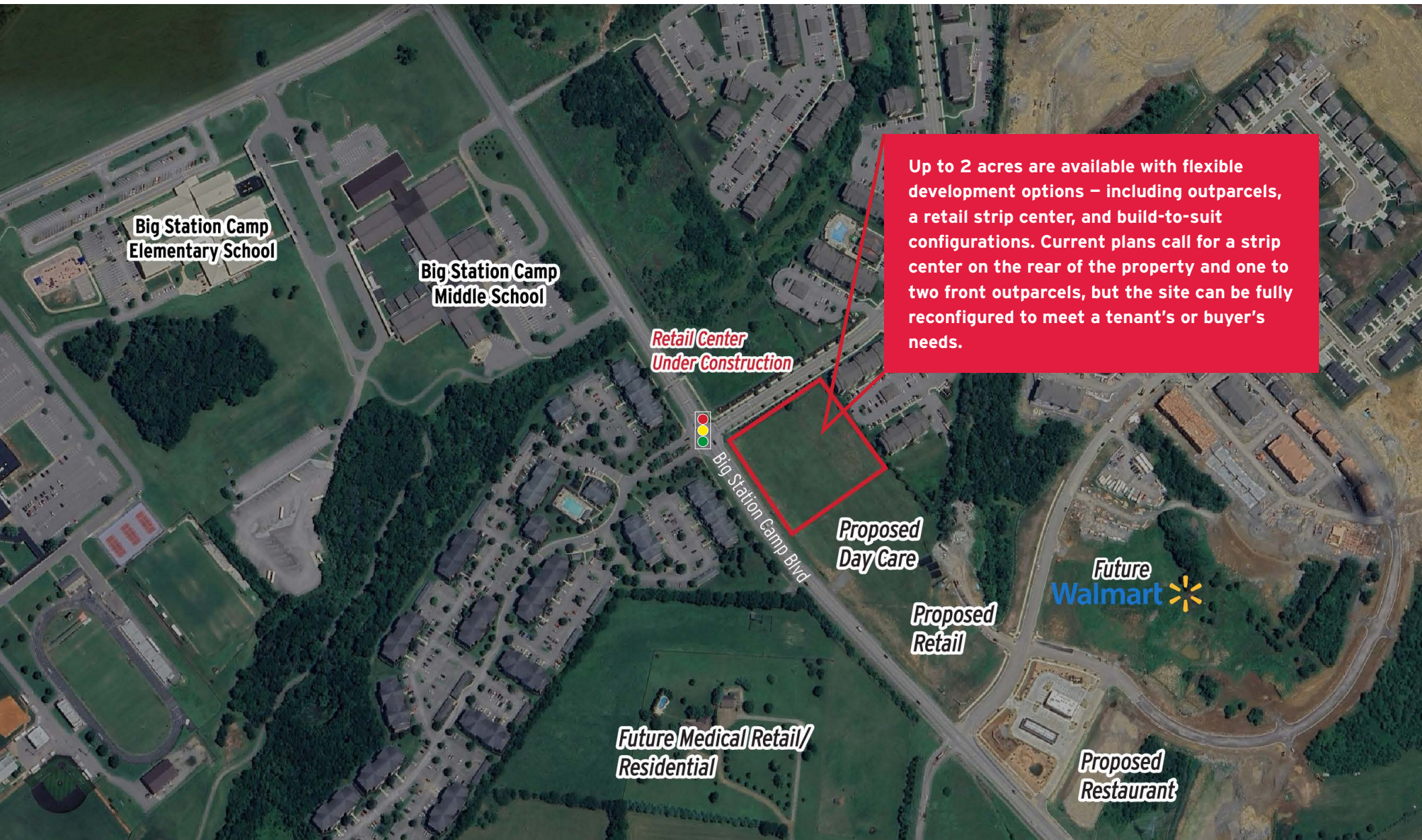
BUILDING 1



BUILDING 2



OUTPARCEL & PRE-LEASING OPPORTUNITY



Up to 2 acres are available with flexible development options – including outparcels, a retail strip center, and build-to-suit configurations. Current plans call for a strip center on the rear of the property and one to two front outparcels, but the site can be fully reconfigured to meet a tenant's or buyer's needs.



TRADE AREA

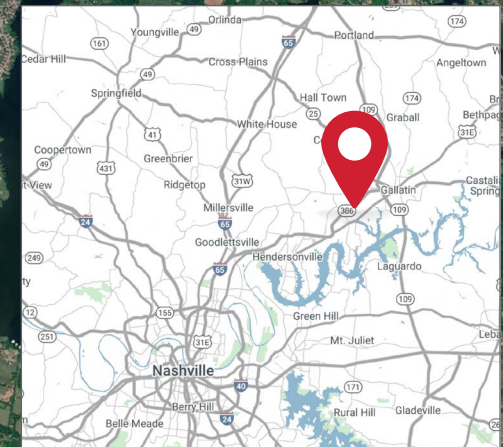
- Ideal location near a newly proposed grocery store, surrounded by numerous single-family, multi-family, and townhome home developments that are currently under construction or completed
- Centrally located between Hendersonville and Gallatin, making this a highly visible and highly trafficked retail location
- Located directly across from Big Station Camp Elementary, Middle, and High School (estimated 2,850 students)

DOWNTOWN GALLATIN

Retail Center Under Construction

HEAVY RESIDENTIAL GROWTH AREA

Proposed Outparcel/ Pre-Lease Opportunity



RESIDENTIAL GROWTH



DISCOVER GALLATIN



Perfectly positioned just northeast of Nashville, Gallatin blends small-town charm with rapid residential and economic growth, making it an ideal destination for retail success. This vibrant community is at the heart of Sumner County and offers a dynamic mix of history, recreation, and commerce.



With its close proximity to Hendersonville and easy access to major highways, Gallatin is a key player in Middle Tennessee's expansion. The area is experiencing a surge in residential development, attracting new families and businesses eager to take advantage of its welcoming atmosphere and economic opportunities.



DEMOGRAPHICS

	3 MILE	5 MILE
2024 POPULATION	30,903	75,678
2029 POPULATION PROJECTION	36,461	84,572
2024 AVG. HOUSEHOLD INCOME	\$146,740	\$137,912
2029 AVG. HOUSEHOLD INCOME PROJECTION	\$161,071	\$154,359



FOR MORE INFORMATION, CONTACT

JON PETTY

615.743.9387

jpetty@southeastventure.com

SHANE BOWEN

615.804.9540

sbowen@southeastventure.com