

FOR LEASE | METROPOLITAN BUSINESS CENTER
4667 SOMERTON ROAD | SUITE F1-F2
Trevose, PA 19053



**±20,000-40,000 SF
AVAILABLE IMMEDIATELY
SUITE F1-F2**

HIGHLIGHTS:

- 40,000 SF Space Divisible to 20,000 SF
- 20' Clear Height
- 46' X 38' Column Spacing
- Wet Sprinkler System
- Abundant Employee Parking
- Convenient Access to Route 1, PA Turnpike & I-95
- +/- 330 SF Office
- 8 Docks



CONTACT

Matt Macdonald
matt.macdonald@lee-associates.com
D 610.238.8118

Jimmy Franchetti
jfranchetti@lee-associates.com
D 610.335.1092

Owned by:



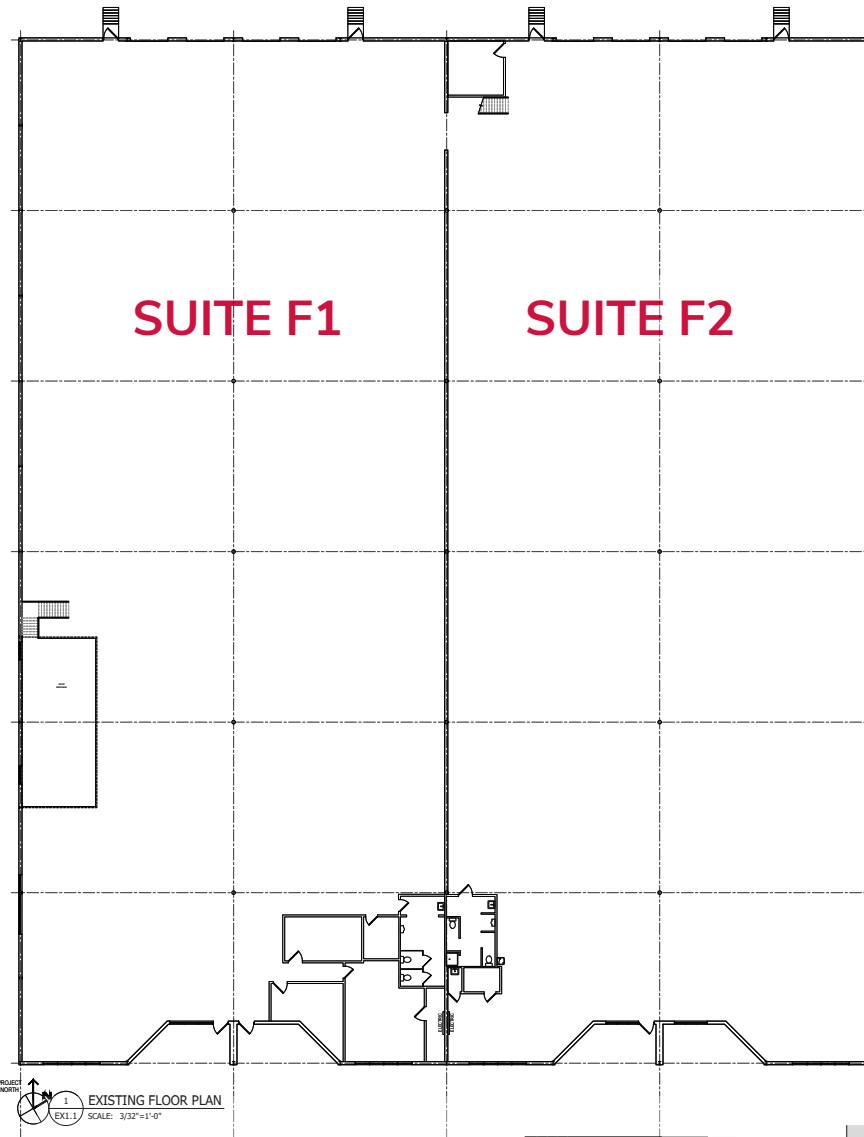
FOR LEASE | METROPOLITAN BUSINESS CENTER
4667 SOMERTON ROAD | SUITE F1-F2
Trevose, PA 19053



CONTACT

Matt Macdonald
matt.macdonald@lee-associates.com
D 610.238.8118

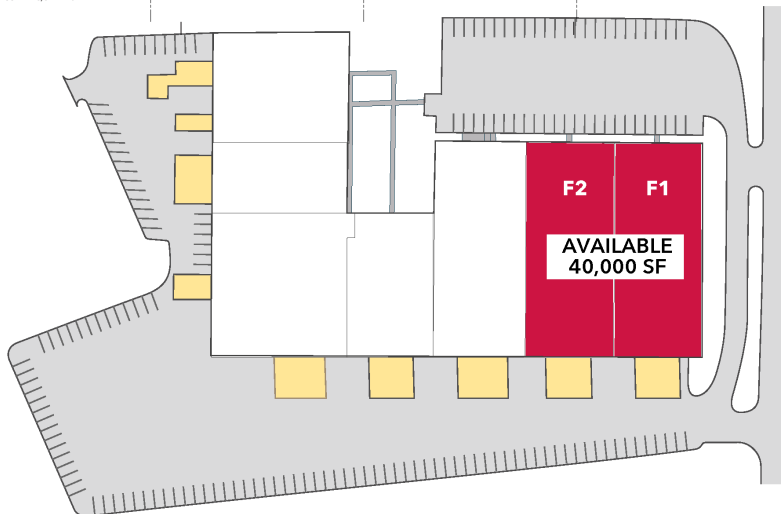
Jimmy Franchetti
jfranchetti@lee-associates.com
D 610.335.1092



±20,000-40,000 SF
AVAILABLE



PROJECT NORTH
1 EXISTING FLOOR PLAN
EXL.1 SCALE: 3/32"=1'-0"



All information furnished regarding property for sale, rental or financing is from sources deemed reliable, but no warranty or representation is made as to the accuracy thereof and same is submitted subject to errors, omissions, change of price, rental or other conditions prior to sale, lease or financing or withdrawal without notice. No liability of any kind is to be imposed on the broker herein.

Owned by:

