

Tallahassee Medical Office Space For Lease

***2458 Mahan Drive
Tallahassee, Florida 32308***



***Exclusively Offered By
Jeff Billingsley
Broker-Associate
850 668-3333 or 850 556-2147
jbillingsley@johnnybluerealty.com***

While this information is deemed to be correct, no guarantee is given as to its accuracy. Buyer should independently verify all information.

All Photos are the Property of Craig Commercial Realty and shall not be used or reproduced without permission.

Executive Summary

2458 Mahan Drive Tallahassee, Florida



2458 Mahan Drive is a brand new medical office project located near Riggins Road and Mahan Drive. Positioned strategically between both regional hospitals, the property offers an exceptional location for a medical officer user. The building consists of 8,400 sq. ft. of shell space (*divisible up to 2,760 sq. ft.*) that is ready for a Tenant's build out/finishes. The project affords a Tenant the ability to custom design their space without the time delays associated with ground up construction; allowing a practice to get operational quickly. The building features a modern exterior, architectural shingle roof, ample parking and signage on Mahan. The property is located close to restaurants, retailers, financial institutions, other professional and medical offices, and major East side residential development projects.

- **Spaces Available:**
 - Unit 101- 2,760 sq. ft.
 - Unit 102- 2,880 sq. ft.
 - Unit 103-2,760 sq. ft. (**LEASED*)
- **Zoning: CM (Medical Arts Commercial)**
- **Floor Plans/Finishes to Tenant's Specifications**
- **Ample Parking**
- **Tenant Signage Available on Mahan Drive**
- **Close to TMH and CRMC**
- **Proximity to rapidly growing East Side of Tallahassee.**
- **CAD Drawings Available for quick test fits.**



Lease Rate and Terms: Please Contact Broker for More Information

Craig Commercial Realty 3360 Capital Circle Northeast, Suite A, Tallahassee, Florida 32308
Phone: (850) 668-3333 Fax: (850) 668-4756

****While this information is deemed correct, no guarantee is given as to its accuracy. Buyer should verify information.****

Front Exterior View



Aerial View Showing Roadways



Unit 103 Entrance



Unit 103 Reception



Unit 103 Waiting Area



Unit 103 Hallway View



Unit 103 Exam Room



Unit 103 Private Physician's Office



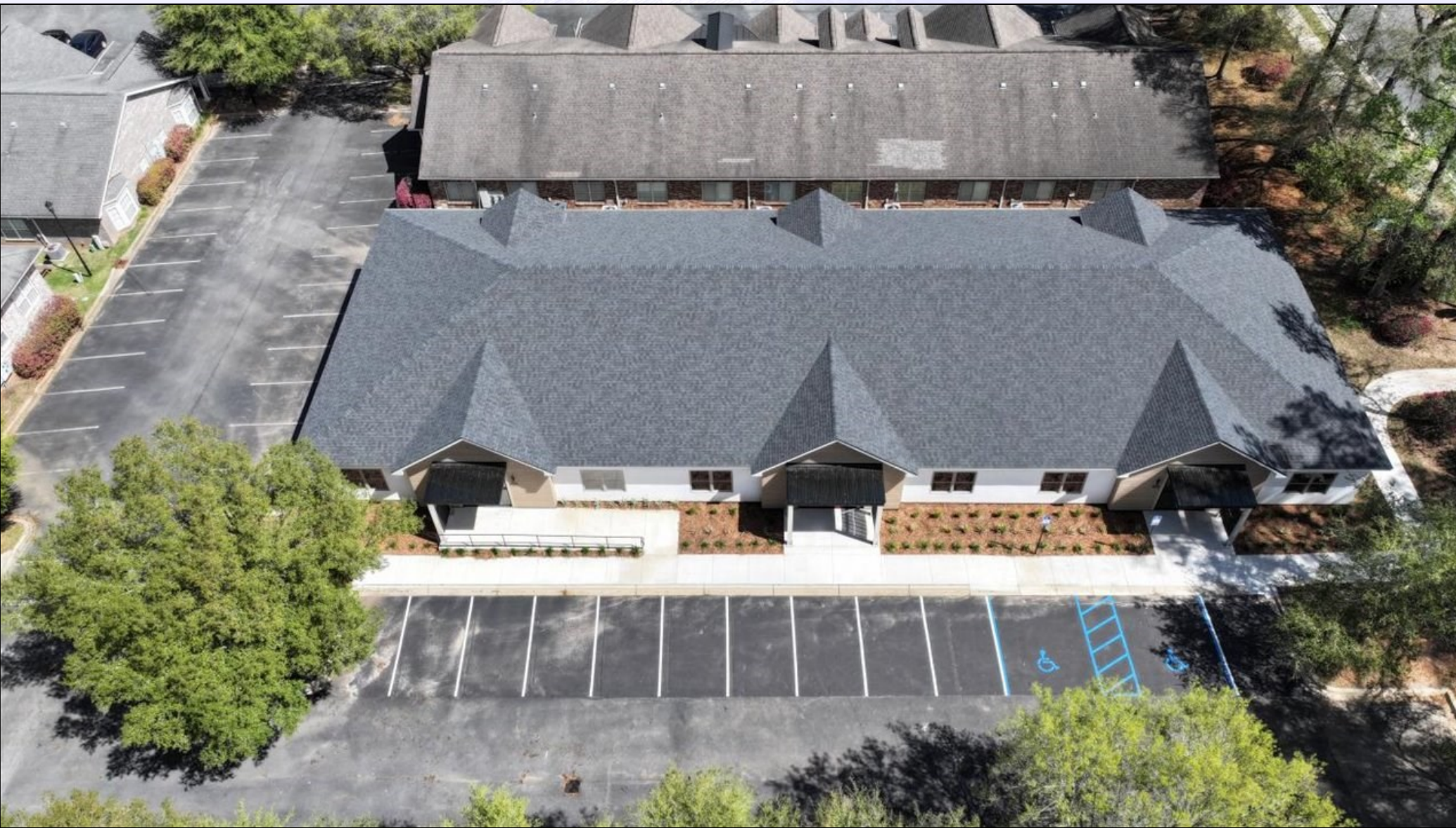
Unit 103 Restroom A



Front Side View Exterior



Aerial View



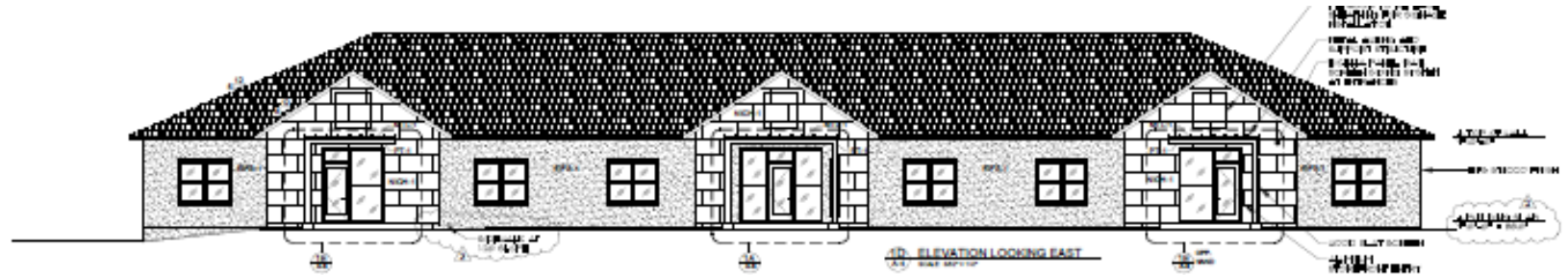
Aerial View



Aerial View Showing Mahan Sidewalk Access



Elevations

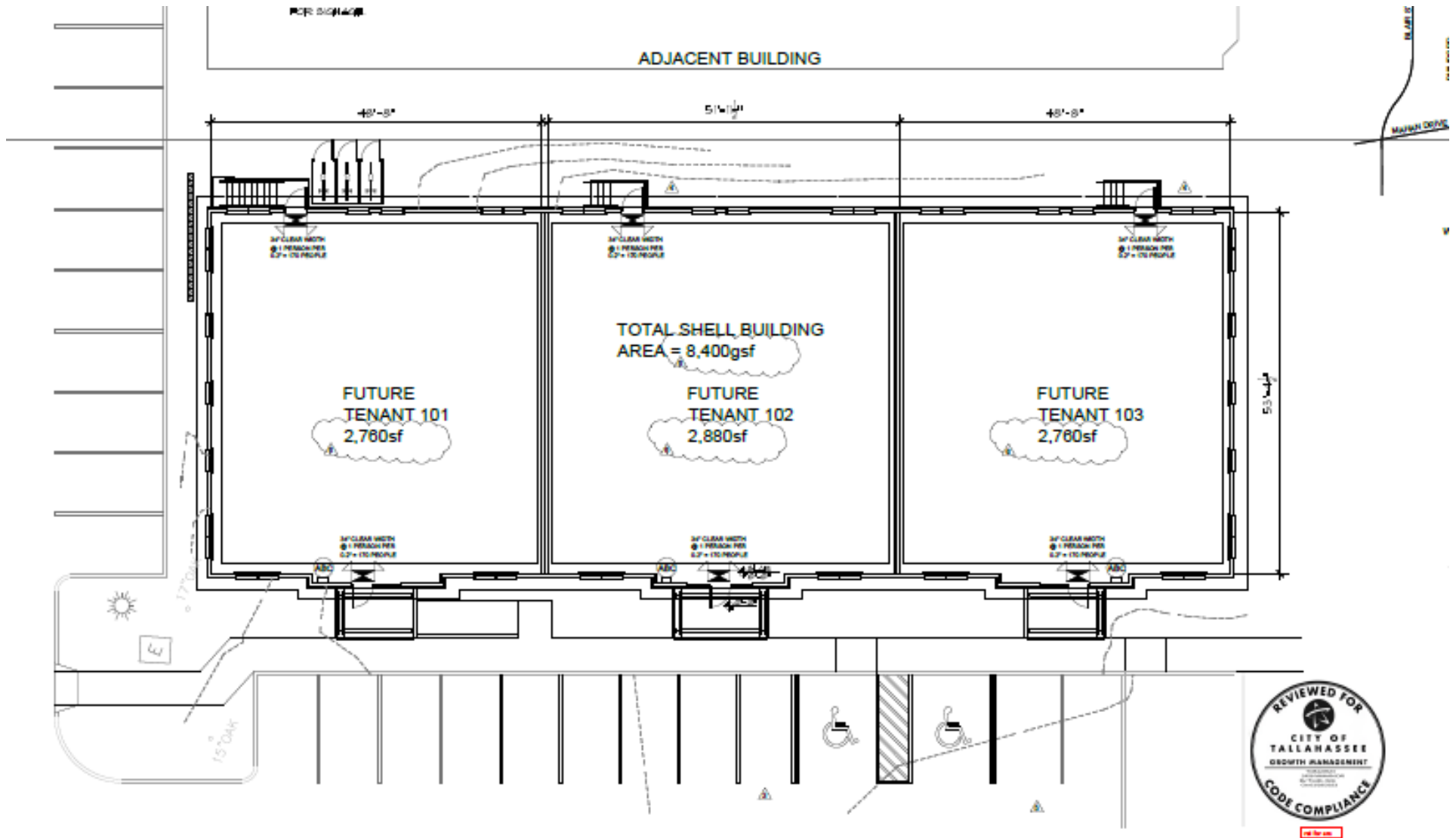


EXTERIOR FINISHES

- EPS - EMULSIFIC STUCCO - SAND FINISH
COLOR:
- NCH - NOCKING RAIN SCREEN PANEL SYSTEM
PATTERN: COLOR:
- MTL - STANDING SEAM METAL ROOF
COLOR:
- PT-1 ACRYLIC PANEL PAINTED ALUMINUM
FINISH: COLOR:



Suite Configurations (suites can be combined)



Representative Suite Layout

