

FOR LEASE  
INDUSTRIAL WAREHOUSE



# LAYTON COURT INDUSTRIAL COMPLEX

1051 SW Layton Court | Prineville, Oregon 97754



**LEASE RATE: \$0.85/RSF/MO/NNN**

**Estimated NNN: \$0.25/RSF**

- Three (3) Buildings Totaling 26,863 +/- SF
- Land: 1.69/AC
- Zoned: M-1 (Light Industrial)
- New Units-Ready for Immediate Occupancy

**Brian Fratzke, CCIM, Principal**

brian@fratcommercial.com | C 541-480-2526

**Tom Tapia, CCIM, Principal**

tom@fratcommercial.com | C 541-390-2900



963 SW Simpson Ave., Suite 220 | Bend, OR 97702  
541.306.4948 | [www.fratzkecommercial.com](http://www.fratzkecommercial.com)

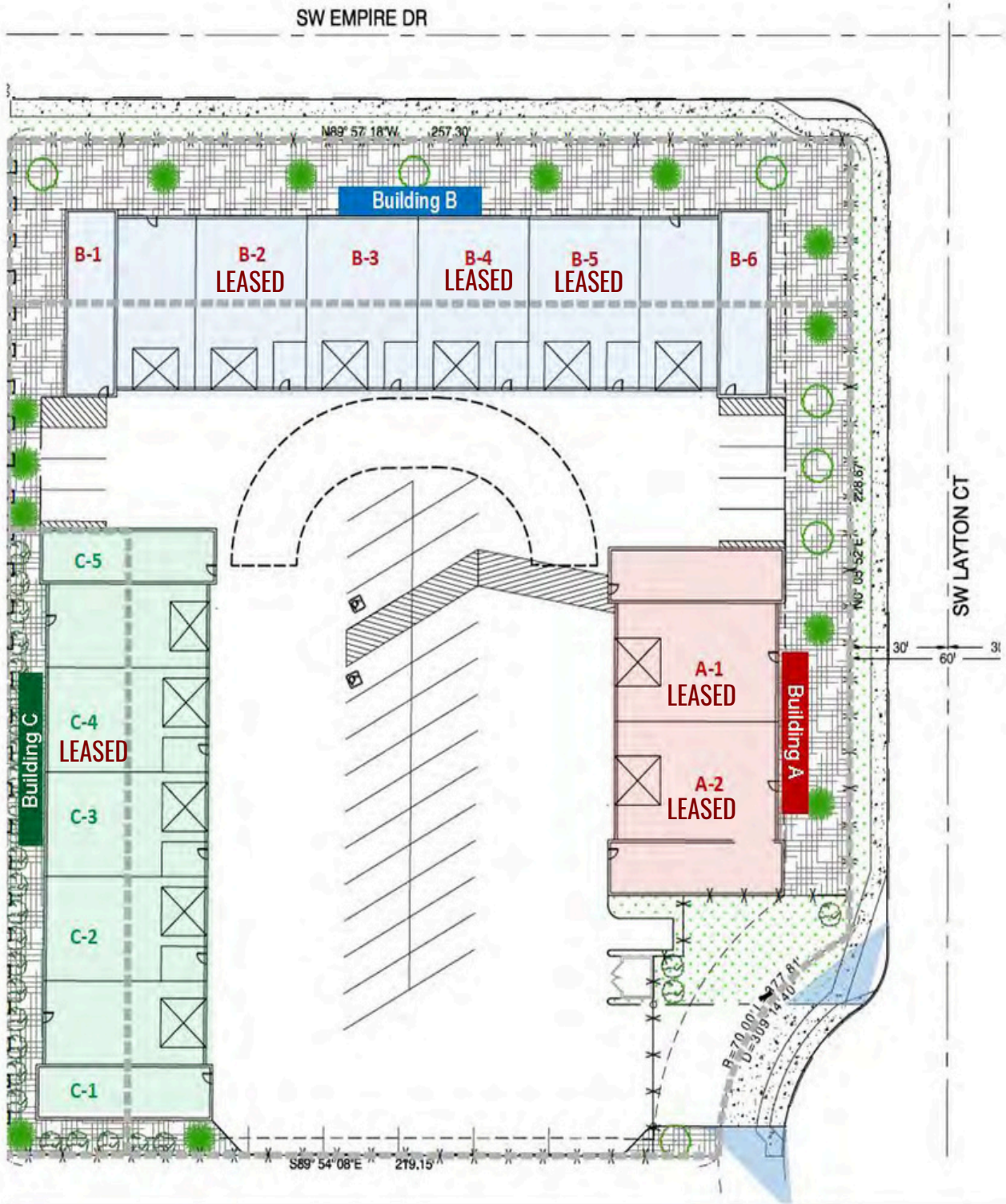


## **PROPERTY OVERVIEW:**

Layton Court Industrial Complex, located in Prineville's Tom McCall Business Park, offers modern industrial space with excellent access to major highways, the airport, and established neighboring businesses. The complex includes three buildings featuring efficient floor plans, quality office space, and flexible warehouse areas ranging from 1,293 to 3,053 RSF, with additional configurations available.

Tom McCall Business Park provides modern infrastructure, full city services, and access to natural gas. Nearby businesses include Facebook, Apple, BTL Liners, Rickabaugh Construction, Lakeside Lumber, Acme Construction Supply, and High Desert Golf Carts.

- Industrial Flex Space (Warehouse-Office-Restroom)
- 12' and 14' grade level roll-up doors into the warehouse
- Units are fully sprinkled
- Wood frame on stem wall construction metal roof
- Masonry wainscoting
- Three (3) Phase 100/200amp electrical service
- Gas/Electric Heat-(End Units have A/C in offices with Economical Mini-Split Units)
- Signage per unit as allowed
- 28 Parking Stalls-Fully Landscaped, Secured entry (gated & fenced), good access for truck deliveries and pick-ups.

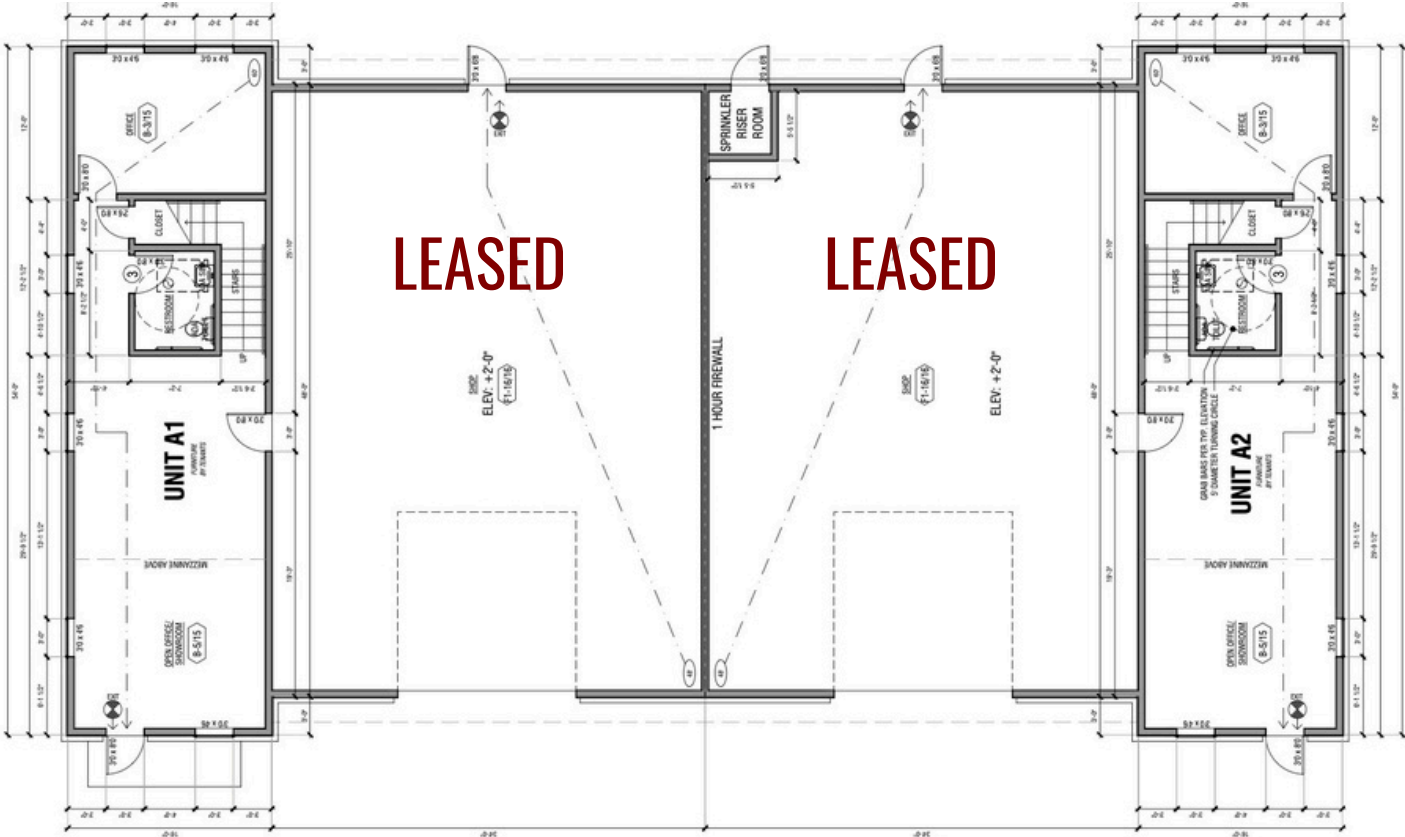


LAYTON COURT INDUSTRIAL CONDOMINIUM COMPLEX

**Building A: 6,076+/- SF Total**  
Two(2)Units with Additional Second Floor Office

# FULLY LEASED

Building 2 Floor Plan



**Building B: 11,498+/- SF Total**

Unit B1:	2,573+/-RSF	\$0.85/RSF/MO/NNN	NNN: \$0.25/RSF
<b>Unit B2:</b>	<b>1,559+/-RSF</b>	<b>\$0.85/RSF/MO/NNN</b>	<b>NNN: \$0.25/RSF</b>
Unit B3:	1,632+/-RSF	\$0.85/RSF/MO/NNN	NNN: \$0.25/RSF
<b>Unit B4:</b>	<b>1,559+/-RSF</b>	<b>\$0.85/RSF/MO/NNN</b>	<b>NNN: \$0.25/RSF</b>
<b>Unit B5:</b>	<b>1,602+/-RSF</b>	<b>\$0.85/RSF/MO/NNN</b>	<b>NNN: \$0.25/RSF</b>
Unit B6:	2,573+/-RSF	\$0.85/RSF/MO/NNN	NNN: \$0.25/RSF

**= UNITS ARE LEASED**



1 MAIN FLOOR PLAN - BUILDING B  
SCALE 3/8" = 1'-0"

FOR LEASE  
BUILDING C



**Building C: 9,289+/-SF TOTAL**

Unit C1:	2,543+/- RSF	\$0.85/RSF	NNN: \$0.25/RSF
Unit C2:	1,440+/- RSF	\$0.85/RSF	NNN: \$0.25/RSF
Unit C3:	1,293+/- RSF	\$0.85/RSF	NNN: \$0.25/RSF
<b>Unit C4:</b>	<b>1,440+/- RSF</b>	<b>\$0.85/RSF</b>	<b>NNN: \$0.25/RSF</b>
Unit C5:	2,573+/- RSF	\$0.85/RSF	NNN: \$0.25/RSF

**= UNITS ARE LEASED**

