



METRO BUSINESS PARK OFFICE BUILDING

1600 West 2200 South, West Valley City, UT 84119

PROPERTY DESCRIPTION:

- Centrally Located within Salt Lake Valley
- In Close Proximity to River Trail & Redwood Junction TRAX Stations
- Additional Parking Available Off-Site
- Updated Common Areas
- Well Kept Property Grounds
- Fiber Optics to Site
- Strategically Located off of Redwood Road and Highway 201
- Suites May be Potentially Demised

LEASE RATE:

\$16.50 SF/YR
(Full Service)

PROPERTY DETAILS:

2,260 - 16,839 RSF

CHRIS METOS

801.879.7870

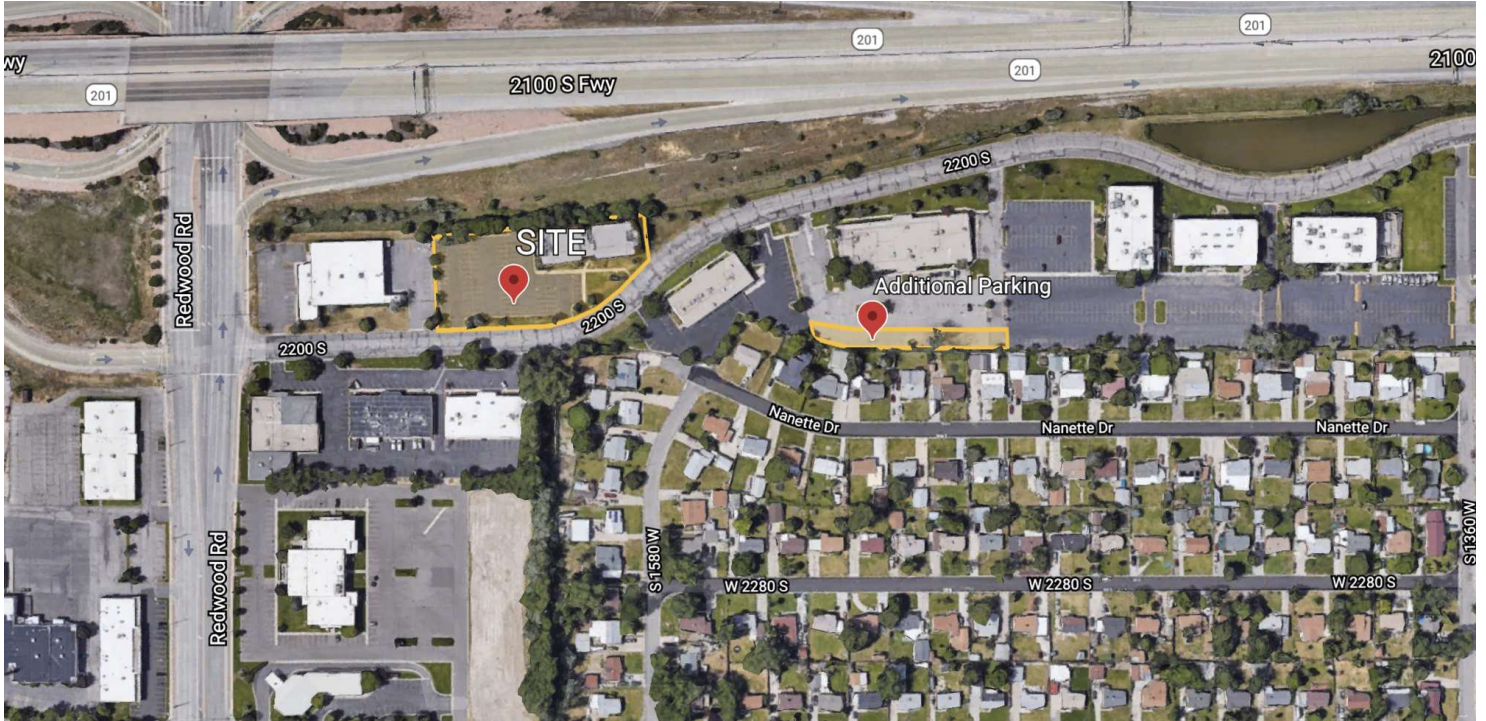
chris@iproperties.com

NICO PRISKOS

801.413.8902

nico@iproperties.com

51 East 400 South Suite 210
Salt Lake City, UT 84111
801.355.0600 | iproperties.com



LEASE INFORMATION

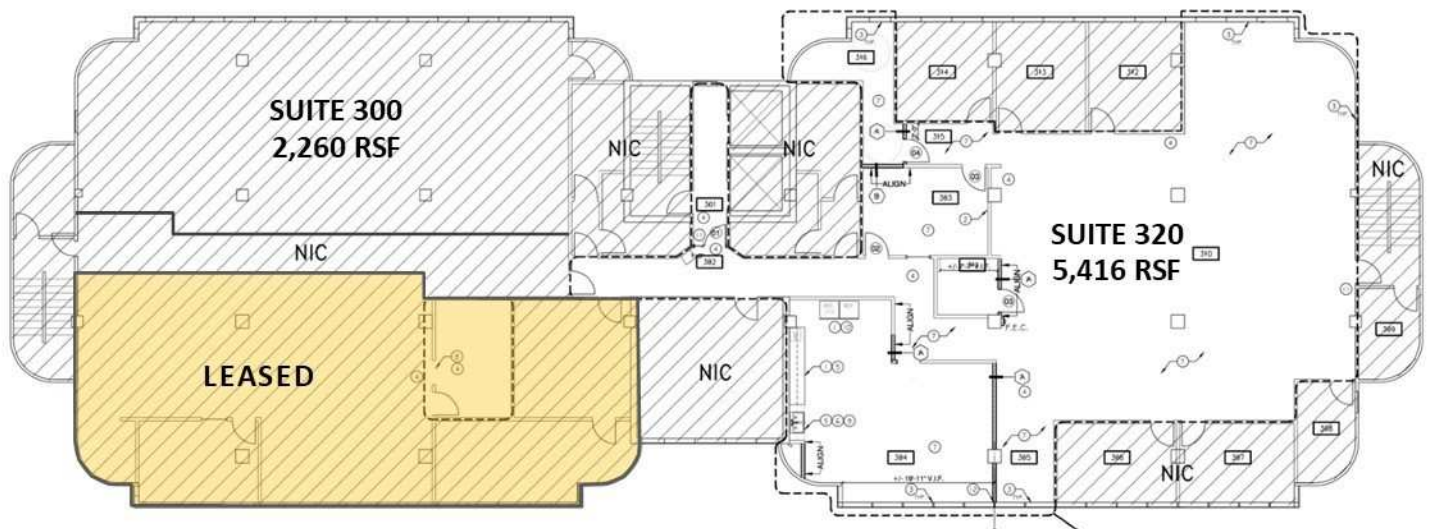
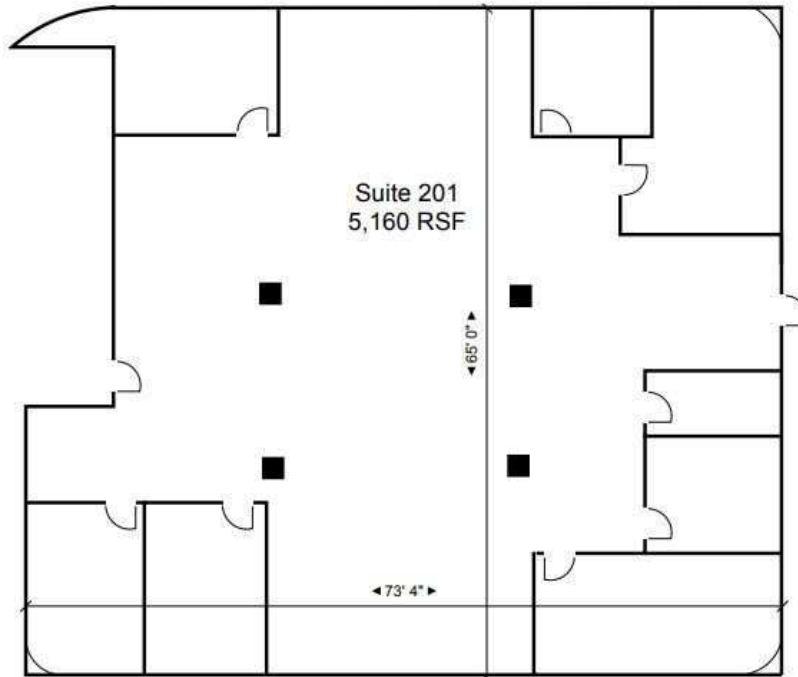
Lease Type:	Full Service	Lease Term:	Negotiable
Total Space:	2,260 - 16,839 SF	Lease Rate:	\$16.50 SF/yr

AVAILABLE SPACES

SUITE	TENANT	SIZE (SF)	LEASE TYPE	LEASE RATE
Suite 200	Available	4,003 SF	Full Service	\$16.50 SF/yr
Suite 201	Available	5,160 SF	Full Service	\$16.50 SF/yr
Suite 300	Available	2,260 SF	Full Service	\$16.50 SF/yr
Suite 320	Available	5,416 SF	Full Service	\$16.50 SF/yr



FOR LEASE



CHRIS METOS

801.879.7870

chris@iproperties.com

NICO PRISKOS

801.413.8902

nico@iproperties.com

51 East 400 South Suite 210

Salt Lake City, UT 84111

801.355.0600 | iproperties.com

*This information is provided with the understanding that any negotiations relating to the property will be conducted through InterNet Properties, Inc. This description is based on information we believe to be reliable but cannot guarantee.



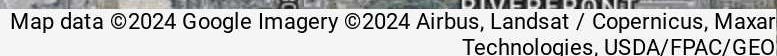
CHRIS METOS
801.879.7870
chris@iproperties.com

NICO PRISKOS
801.413.8902
nico@iproperties.com

51 East 400 South Suite 210
Salt Lake City, UT 84111
801.355.0600 | iproperties.com



FOR LEASE



801.355.0600 | iproperties.com

*This information is provided with the understanding that any negotiations relating to the property will be conducted through InterNet Properties, Inc. This description is based on information we believe to be reliable but cannot guarantee.