

# 1,200 SQ.FT. OFFICE SPACE FOR LEASE

FOR LEASE

450 W MAPLE ST, HARTVILLE, OH 44632



## PROPERTY DESCRIPTION

1,200 SF of office for lease on the first floor at The West Maple Center at 450 West Maple ST, Suite 2, Hartville, OH 44632. Join Beneficial Health Medical Center, Pneuma Nail Studio, Massage Therapist & others in this multi-tenant building. Zoned Hartville B1 Neighborhood Business.

The space has a two (2) private offices, one that was used as a copy room, a large conference room (or third office) and an area that could be used as a bullpen or open concept office. Plenty of natural light. Common area restrooms in the hallway. Owner just installed NEW LED lights!

\$1,200.00 PER MONTH PLUS GAS, ELECTRIC & CABLE/INTERNET/PHONE. OWNER PAYS WATER & SEWER.

Owner will install new carpet throughout for a 3 year commitment for \$1,350 / month + utilities.

## Spencer Hartung

Vice President, Senior Sales Associate  
330.936.0276  
spencer@putmanproperties.com

## LOCATION DESCRIPTION

I-77 to Exit 107 for US-62 East towards Alliance, turn left onto OH-43/Market Ave N, turn left onto OH-43 / OH-619 / W Maple St. Building on your left.

## OFFERING SUMMARY

<b>Lease Rate:</b>	\$1,200.00 per month (MG)
<b>Year Built:</b>	1988
<b>Available SF:</b>	1,200 SF
<b>Building Size:</b>	9,216 SF

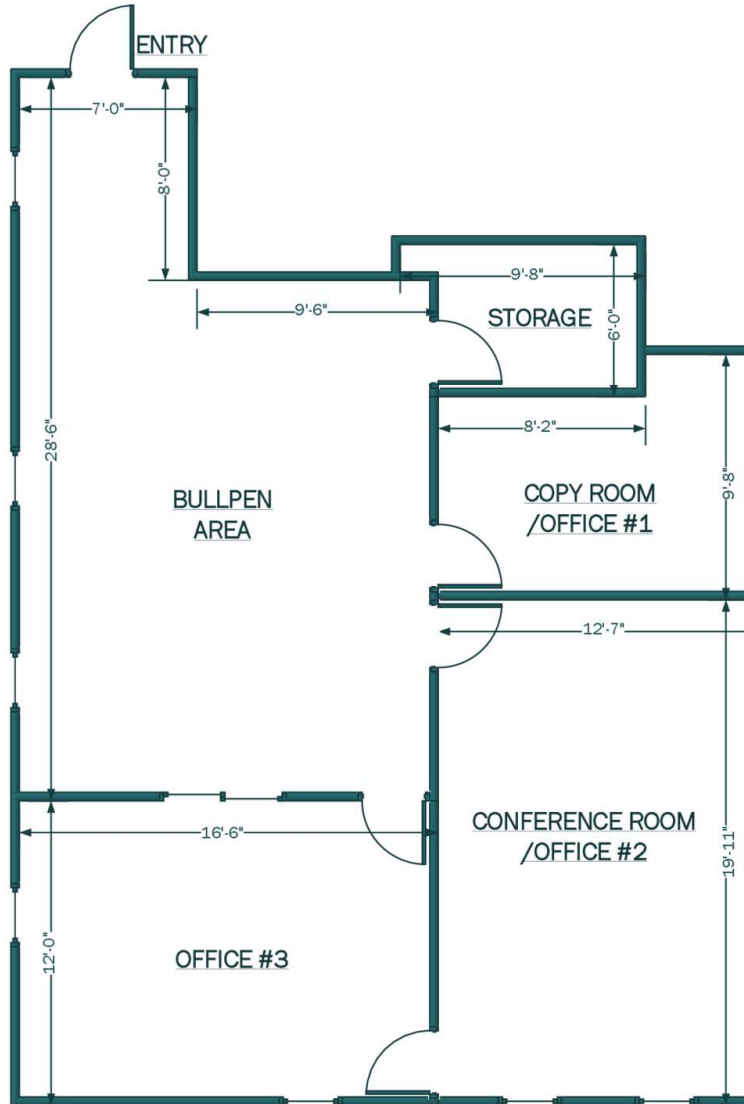
This information is from a reliable source but is not guaranteed and is subject to change. All dimensions are approximate, are not guaranteed, and the property is subject to prior disposition.



# 1,200 SQ.FT. OFFICE SPACE FOR LEASE

450 W MAPLE ST, HARTVILLE, OH 44632

FOR LEASE



**1,200 SQ.FT. OFFICE SPACE  
FOR LEASE  
450 MAPLE ST W, SUITE 2  
HARTVILLE, OHIO 44632**

**\$1,200 PER MONTH PLUS GAS,  
ELECTRIC & CABLE/INTERNET/PHONE  
COMMON AREA RESTROOMS IN THE  
HALLWAY**

**Marketed by:**  
Spencer Hartung

330-936-0276

[spencer@putmanproperties.com](mailto:spencer@putmanproperties.com)



All dimensions are approximate and not guaranteed, and property is subject to prior disposition.

## Spencer Hartung

Vice President, Senior Sales Associate  
330.936.0276  
[spencer@putmanproperties.com](mailto:spencer@putmanproperties.com)

This information is from a reliable source but is not guaranteed and is subject to change. All dimensions are approximate, are not guaranteed, and the property is subject to prior disposition.

4065 Fulton Drive N.W., Canton, OH 44718 // 330.498.4400 // [putmanproperties.com](http://putmanproperties.com)

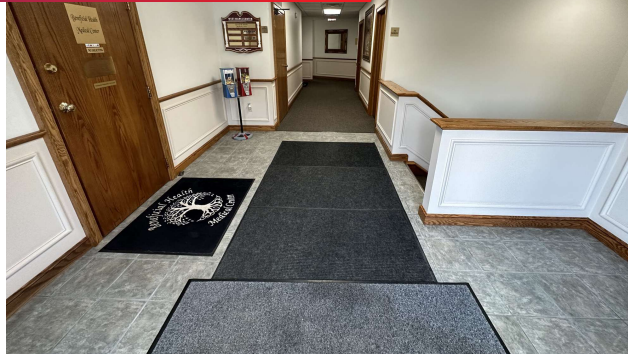




# 1,200 SQ.FT. OFFICE SPACE FOR LEASE

FOR LEASE

450 W MAPLE ST, HARTVILLE, OH 44632



## Spencer Hartung

Vice President, Senior Sales Associate  
330.936.0276  
spencer@putmanproperties.com



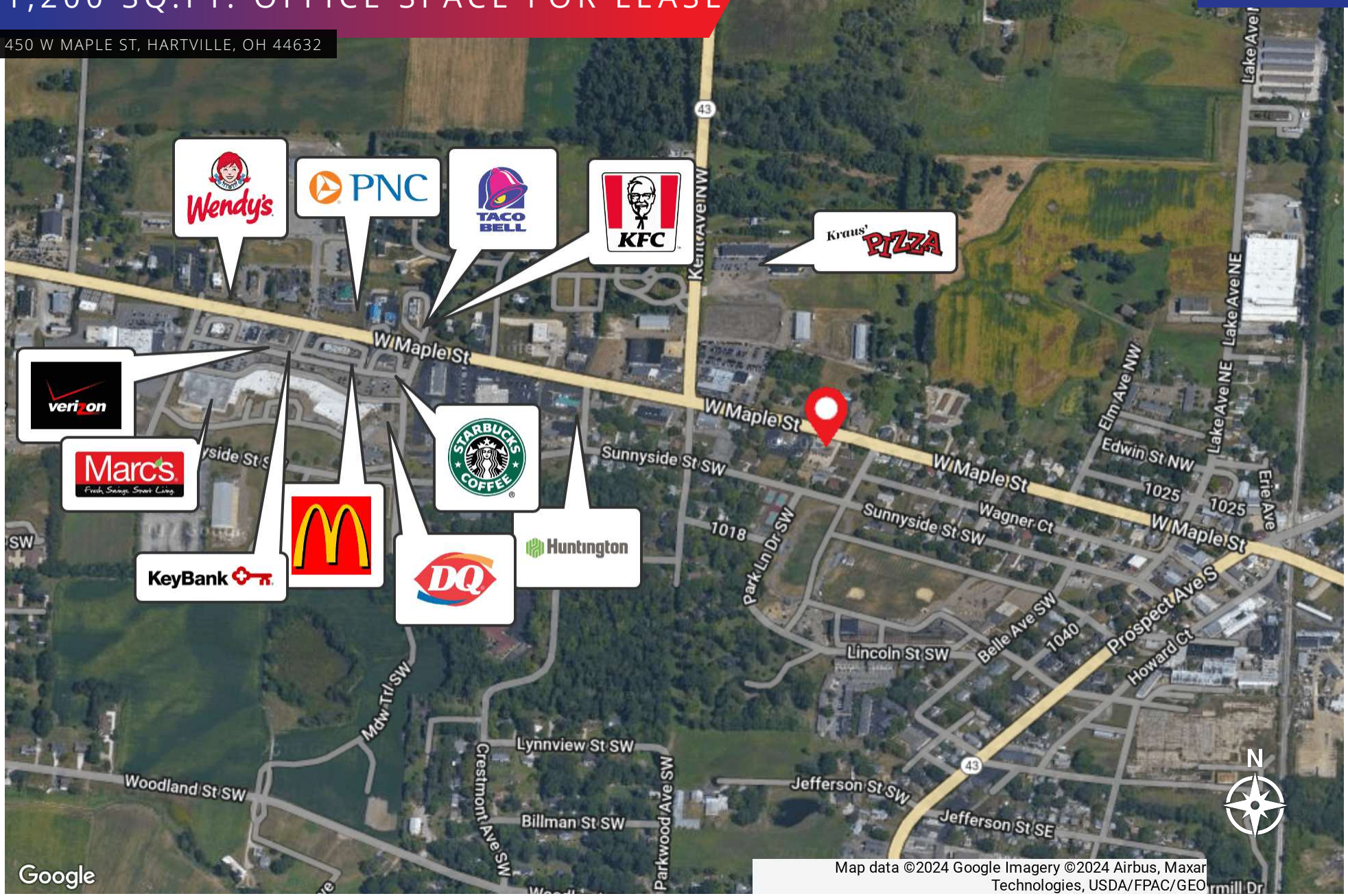
This information is from a reliable source but is not guaranteed and is subject to change. All dimensions are approximate, are not guaranteed, and the property is subject to prior disposition.

4065 Fulton Drive N.W., Canton, OH 44718 // 330.498.4400 // putmanproperties.com



# 1,200 SQ.FT. OFFICE SPACE FOR LEASE

450 W MAPLE ST, HARTVILLE, OH 44632



Google

Map data ©2024 Google Imagery ©2024 Airbus, Maxar Technologies, USA/FPAC/GE

**Spencer Hartung**  
 Vice President, Senior Sales Associate  
 330.936.0276  
 spencer@putmanproperties.com



This information is from a reliable source but is not guaranteed and is subject to change. All dimensions are approximate, are not guaranteed, and the property is subject to prior disposition.



# 1,200 SQ.FT. OFFICE SPACE FOR LEASE

FOR LEASE

450 W MAPLE ST, HARTVILLE, OH 44632

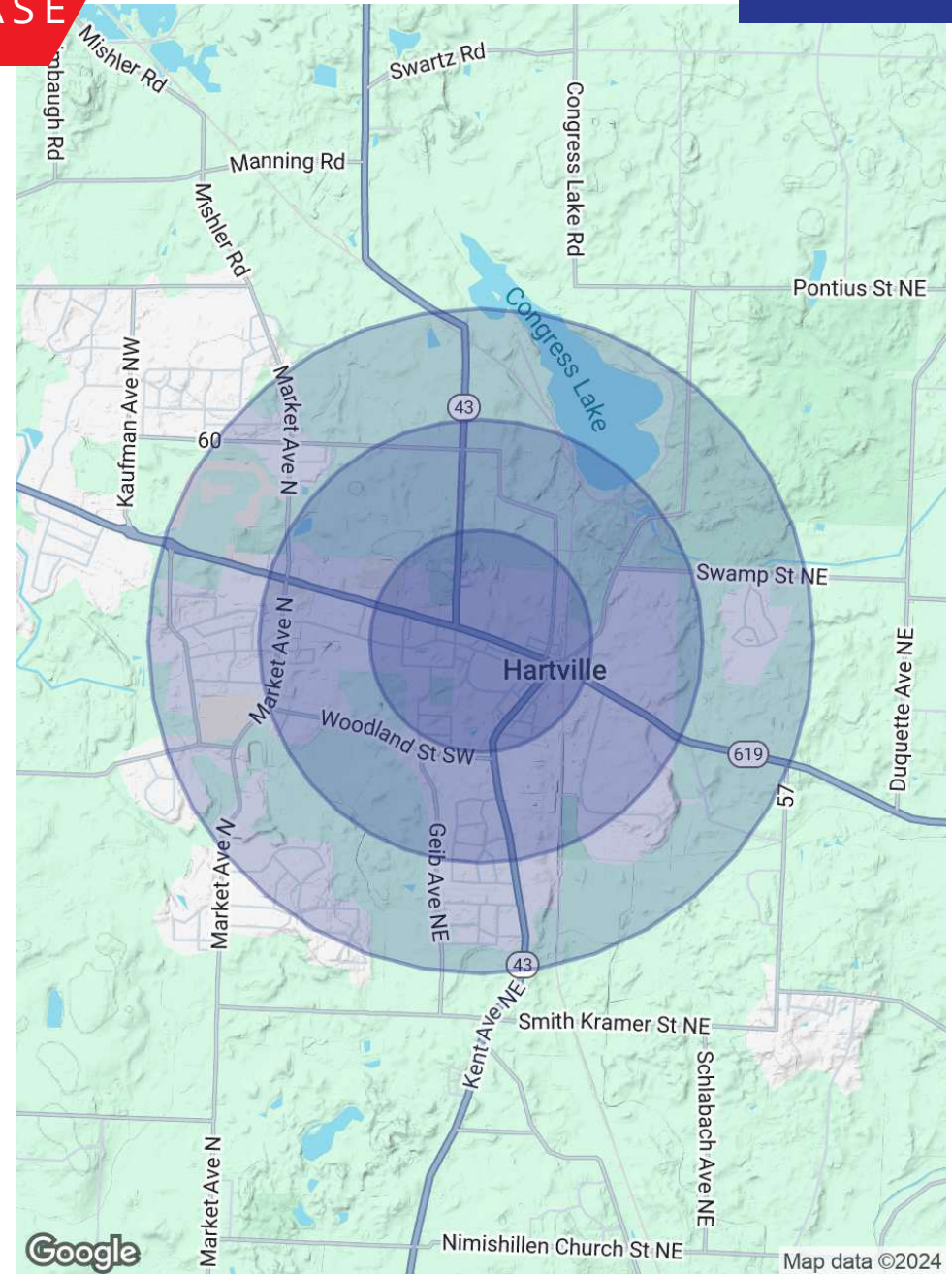
## POPULATION

	0.5 MILES	1 MILE	1.5 MILES
Total Population	873	2,608	5,071
Average Age	42.6	43.5	44.8
Average Age (Male)	36.9	38.9	41.6
Average Age (Female)	47.8	49.1	50.2

## HOUSEHOLDS & INCOME 0.5 MILES 1 MILE 1.5 MILES

	0.5 MILES	1 MILE	1.5 MILES
Total Households	398	1,151	2,138
# of Persons per HH	2.2	2.3	2.4
Average HH Income	\$61,256	\$63,397	\$69,538
Average House Value	\$149,006	\$157,274	\$167,015

2020 American Community Survey (ACS)



## Spencer Hartung

Vice President, Senior Sales Associate  
330.936.0276  
spencer@putmanproperties.com



This information is from a reliable source but is not guaranteed and is subject to change. All dimensions are approximate, are not guaranteed, and the property is subject to prior disposition.