



**BERKSHIRE
HATHAWAY**
HomeServices

Valerie Schumann

Principal Broker

C: 503-812-8423

vschumann@bhhsnw.com

Roger Cooper

Principal Broker

C: 503-367-6911

rcooper@bhhsnw.com

406 Garibaldi Avenue

P.O. Box 475

Garibaldi, OR 97118

BERKSHIRE HATHAWAY Home Services | COMMERCIAL DIVISION | COASTAL/PDX | OregonCoastCommercial.com

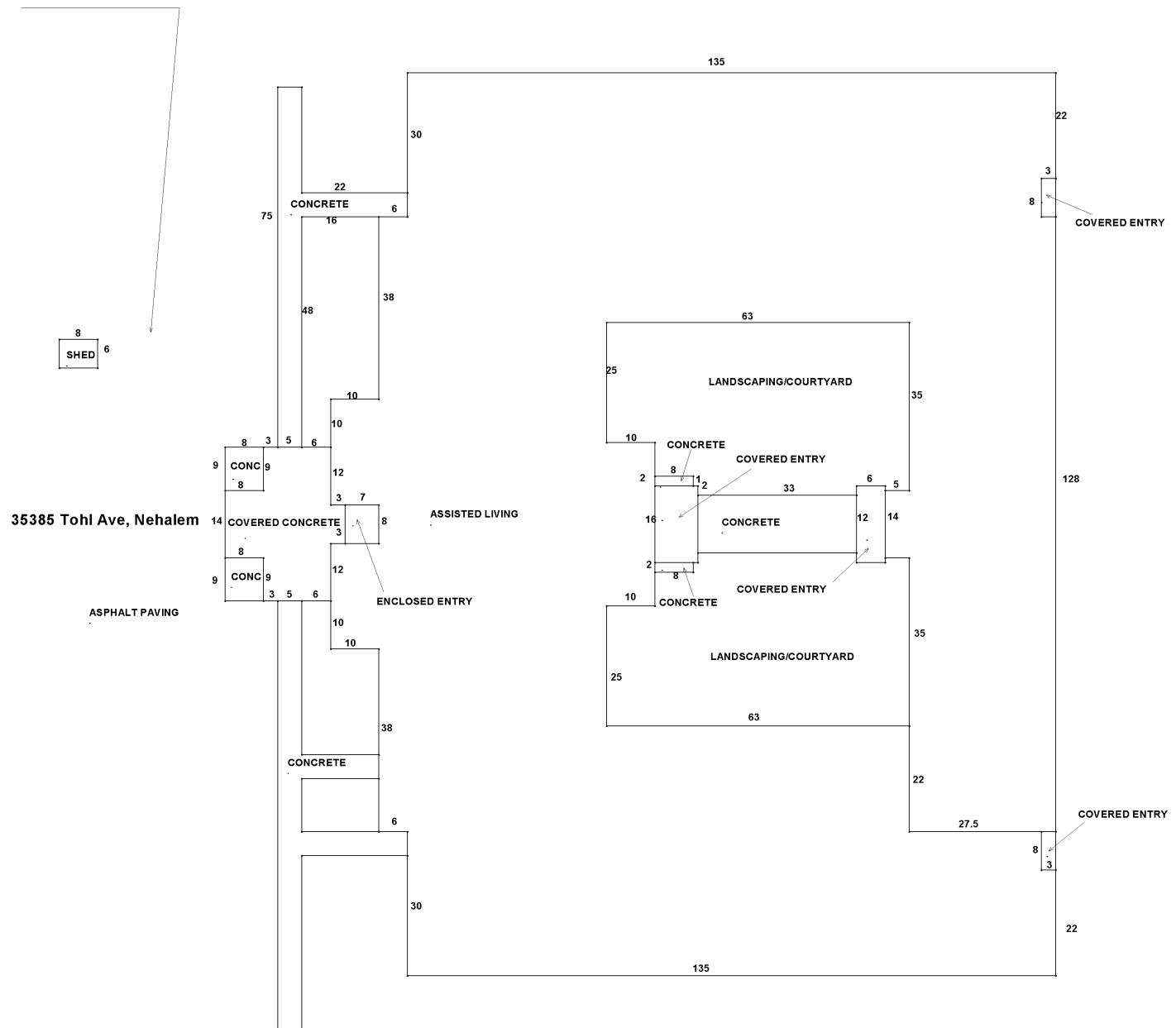
SENIOR CARE LIVING FACILITY FOR SALE



NEHALEM BAY HOUSE | 35385 TOHL AVENUE, NEHALEM, OR | \$1,850,000

SENIOR CARE LIVING FACILITY | FOR SALE

BUILDING DIAGRAM AND OUTBUILDINGS - NEHALEM BAY HOUSE 35385 TOHL AVE, NEHALEM, OR



SENIOR CARE LIVING FACILITY | FOR SALE
PLAT MAP - NEHALEM BAY HOUSE 35385 TOHL AVE, NEHALEM, OR



Roger Cooper, Principal Broker
C: 503-367-6911 | rcooper@bhhsnw.com

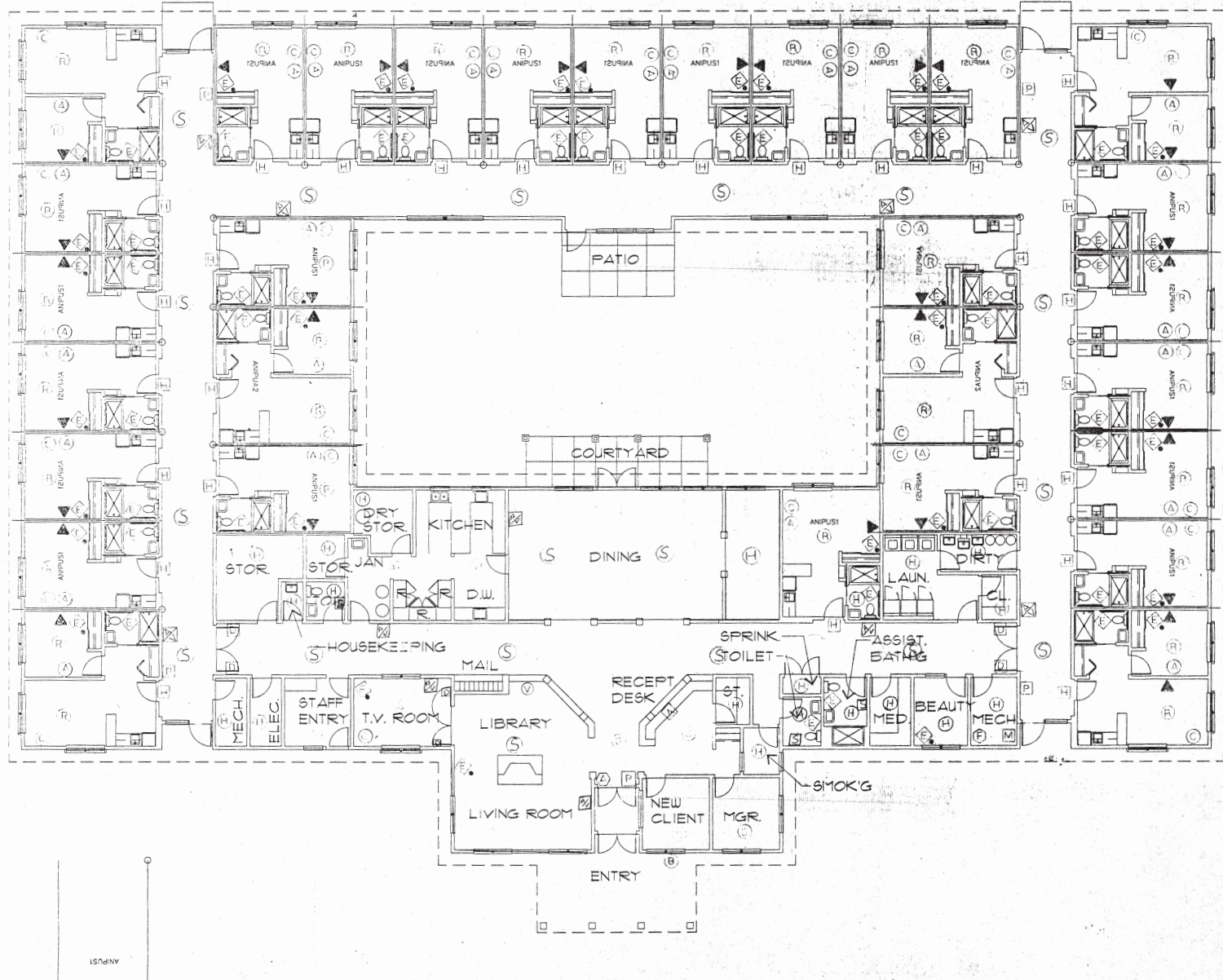
Valerie Schumann, Principal Broker
C: 503-812-8423 | vschumann@bhhsnw.com

BERKSHIRE
HATHAWAY



COMMERCIAL DIVISION | COASTAL/PDX | OregonCoastCommercial.com

SENIOR CARE LIVING FACILITY | FOR SALE
 FLOOR PLAN - NEHALEM BAY HOUSE 35385 TOHL AVE, NEHALEM, OR



SENIOR CARE LIVING FACILITY | FOR SALE
SITE PICTURES - NEHALEM BAY HOUSE 35385 TOHL AVE, NEHALEM, OR



Roger Cooper, Principal Broker
C: 503-367-6911 | rcooper@bhhsnw.com

Valerie Schumann, Principal Broker
C: 503-812-8423 | vschumann@bhhsnw.com

BERKSHIRE
HATHAWAY



COMMERCIAL DIVISION | COASTAL/PDX | OregonCoastCommercial.com