

10' WIDE GAS LINE EASEMENT RUNNING ALONG THE EAST PORTION OF THE NW1/4 OF SECTION 30. EXACT LOCATION OF GAS LINE EASEMENT IS NOT DISCLOSED BY DOCUMENT 8930511300

COS 14606 TRACT 1 NOT A PART

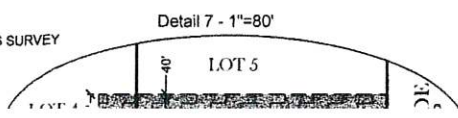
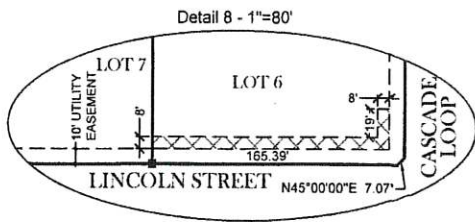
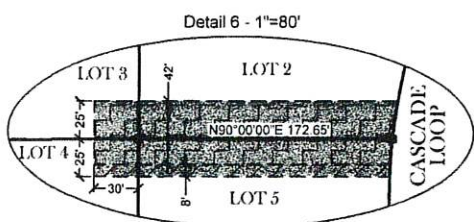
LINE TABLE		
LINE #	BEARING	DISTANCE
L1	N0°14'37"E	86.78'
L2	N0°14'37"E	13.90'
L3	N13°54'44"W	61.80'
L4	S90°00'00"W	103.09'
L5	S89°59'49"E	60.00'
L6	N0°33'45"W	5.37'
L7	S83°27'28"E	77.25'
L8	S89°48'47"E	30.09'
L9	N0°11'11"E	97.32'
L10	N14°12'33"E	61.91'
L11	N0°11'11"E	66.75'
L12	N0°11'11"E	9.64'
L13	N0°11'11"E	54.44'
L14	N89°48'47"W	40.18'
L15	S83°21'33"W	65.88'

ACREAGE TABLE:

COMMERCIAL LOTS (10)	32.881
RESIDENTIAL LOT (LOT 1, BLK 3)	6.139
OPEN SPACE (LOT 2, BLK 3)	0.602
ROADS	17.303
TOTAL PHASE 2	56.925

COS 6643 PORTION OF TRACT-1 NOT A PART

EASEMENT #6 PER DOC. NO. 201700019376 AND KALISPELL NORTH TOWN CENTER - PHASE 1



EASEMENT HATCH KEY

- PRIVATE ACCESS EASEMENT
- PUBLIC WATER MAIN; PRIVATE STORM AND SAN. SVC. EASEMENT
- DRY UTILITY EASEMENT

"This plat is provided solely for the purpose of assisting in locating the land and the Company assumes no liability for variations, if any, with actual survey." Insured Titles

COS 6116 TRACT-1 NOT A PART

WITH 2" ALUMINUM CAP '18019'
 H 2" ALUMINUM CAP '18019'
 POSITION - NOTHING FOUND OR SET THIS SURVEY
 3 4491
 3 14606